

Lancaster Co. Livestock Market Auctions

Lancaster Livestock

Monday, July 30, 1990
Cattle Calves Hogs Sheep Goats
Monday's Auction
960 69 169 1139 468
Last Monday's Auction
980 99 267 781 166
Last Year's Auction
776 142 278 760 380

CATTLE: Trade and demand moderate. Slaughter steers steady to 25 higher, advances on Choice 2-4; slaughter heifers steady, instances 1.00 higher on Choice 2-3; quality of cattle largely average, weigh-up conditions mostly average to full; cows steady to 50 higher, most advance on Cutter and Boning Utility; bullocks not fully tested; bulls unevenly steady. Supply included 68% slaughter steers, 12% slaughter heifers, 13% cows, and 7% bulls.

SLAUGHTER STEERS: High Choice few Prime 2-4 1150-1500 lb 77.00-78.00, few 78.35; Choice 2-4 1025-1525 lb 74.25-76.85; mixed Select and Choice 2-3 1075-1475 lb 71.75-74.50; returned to feedlot 800-1125 lb 74.50-75.60. HOLSTEINS: Choice 1250-1475 lb 70.00-72.10, 1600-1700 lb 67.75-68.25; mixed Select and Choice 1250-1525 lb 67.50-69.50.

SLAUGHTER HEIFERS: Few High Choice and Prime 2-3 1075-1175 lb 74.50-76.50; Choice 2-3 950-1300 lb 71.00-74.25; mixed Select and Choice 2-3 1000-1350 lb 68.00-70.50; Select 1-3 900-1325 lb 63.50-67.00.

COWS: LO DRESSING BULK HI DRESSING Breaking Utility and Commercial 2-4 53.00-55.50 55.75-58.25 Cutter and Boning Utility 1-2 51.25-53.00 53.25-55.75 56.00-58.00 Canner and low Cutter 51.25-53.00

BULLS: Yield grade 1 1100-2200 lb 65.75-69.50, few 70.00-72.75, high boning 74.25-77.00; Yield grade 2 950-1650 lb 62.00-65.50, low dressing 58.00-63.25.

VEAL CALVES: Vealers unevenly steady; slaughter calves steady to 3.00 lower. Demand fairly good for Holstein bulls returning to farm.

VEALERS: High Good and low Choice 175-285 lb 95.00-105.00; Good 80-110 lb 65.00-75.00.

SLAUGHTER CALVES: Good and Choice 275-525 lb 70.00-85.00.

RETURNED TO FARM: Light supply 90-110 lb Holstein bulls 120.00-137.50; few small frame 90-100 lb 100.00.

HOGS: Compared to last Wednesday barrows and gilts steady; sows 25-75 higher.

BARROWS AND GILTS: US 1-2 220-260 lb 59.50-60.00. Few 61.00.

SOWS: US 1-3 300-550 lb 47.50-49.00. Medium 300-450 lb 45.00-47.00. Thin 275-400 lb 40.00-45.00.

BOARS: All Weights 45.00.
SHEEP: Slaughter lambs 2.00-6.00 lower; slaughter ewes steady to 3.00 higher.

SPRING LAMBS: Choice and Prime 80-110 lb 55.00-62.00; Good 80-110 lb 50.00-55.00, 60-80 lb 60.00-70.00.

SLAUGHTER EWES: Utility and Good 15.00-38.00.

GOATS: All goats sold by the head.

Vintage Livestock Auction

Paradise, Pa.
Tuesday, July 31, 1990
Report Supplied by USDA

CATTLE 865...USDA...(Supply included 58% steers and 37% cows)...Compared with Monday's market: Slaughter steers trade moderately active, demand fairly good; steady, few sales weak; Heifers not enough sales for market, humidity and brief rain showers prompted weigh conditions of average plus to mostly full; Cows weak to .50 lower, most decline on Cutter and Boning Utility; Bullocks few sales steady; Bulls steady to .50 lower. High Choice & Prime 2-4, 1150/1500 lbs. sl. steers 77.00-78.00, couple odds 78.25-79.50, Choice 2-4 1075/1475 lbs. 74.25-76.85, few 74.00, mixed Select & low Choice 2-3, 1075/1450 lbs. 71.25-74.25, returned to feed 925/1250 lbs. 70.00-74.00; Choice 1325/1575 lbs. Holsteins 70.50-73.75, mixed Select & low Choice 1225/1525 lbs. 67.25-69.50. Breaking Utility & Commercial cows 2-4, low dressing 50.75-51.25, bulk 52.50-54.75, high dressing 55.00-58.75, Cutter & Boning Utility 2-3, low dressing 49.25-52.00, bulk 52.50-55.25, high dressing 55.75-59.50, Canner & Low Cutter 45.00-49.50. Few mixed Select & Choice 2-3 1050/1600 lbs. sl. bullocks 63.50-66.75. Yield Grade No. 1, 1125/2075 lbs. sl. bulls 66.00-68.50, few 70.25-70.75, Thin 1150/1925 lbs. 63.00-65.75.

CALVES 800... Supply included 690 in graded sale of which 61% sold to return to farm...Vealers 2.00 to 5.00 lower, instances of 7.00 lower. Few low Choice 145/200 lbs. 93.00-98.00, Good 70/130 lbs. 60.00-75.00, Standard 65/75 lbs. 45.00-55.00. Farm Calves: Holstein Bulls 95/120 lbs. 125.00-142, 85/90 ls. 70.00, Small frame 100/115 lbs. 97.00-116.00, Hol. Heifers 90/110 lbs. 188.00-209.00, 80 lbs. 80.00, Small frame 80/105 lbs. 70.00-120.00.

SHEEP 12...Insufficient volume for a market test - all cwt.

GOATS 0... No Market test.

Large 75.00-110.00, thin 50.00-75.00; Medium 45.00-55.00, thin 35.00-45.00; Small 30.00-40.00; Kids 20.00-30.00.

East Coast Carlot

Wed., Aug. 1, 1990
Report supplied by USDA
EAST COAST CARLOT MEAT TRADE DELIVERED PRICES (CAF) BOSTON TO WASHINGTON AREA INCLUSIVE.
COMPARED TO LAST WEEK: NO SALES REPORTED BUT A WEAKER UNDERTONE PREVAILS.

Lancaster Livestock Auction

Lancaster, Pa.
Wednesday, August 1, 1990
Cattle Calves Hogs Sheep Goats

Wednesday's Auction
13 20 212 0 0
Last Wednesday's Auction
20 11 326 30 0
Last Year's Auction
68 4 637 0 0

CATTLE: Insufficient volume for a market test.

VEAL CALVES: Insufficient volume for a market test.

HOGS: Compared to Monday barrows and gilts not tested; sows 50 lower.

BARROWS AND GILTS: Scarce.

SOWS: US 1-3 300-550 lb 47.00-48.50. Medium 300-450 lb 45.00-47.00. Thin 275-400 lb 40.00-45.00.

BOARS: All weights 46.00.

SHEEP: No market test.

GOATS: No market test.

Dewart Livestock Auction

Dewart, Pa.
Monday, July 30, 1990
Report Supplied by PDA

CATTLE 78...PDA...Compared with last weeks market: Slaughter cows strong to .50 higher. One Choice slaughter steer 75.00, few Select 70.00-73.75; one Choice Holstein 66.75. Few Breaking Utility & Commercial slaughter cows 52.00-54.50, Cutter & Bon. Utility 51.00-54.50, couple 55.85, Canner & Low Cutter 45.00-49.50, Shells down to 42.00. Few Yield Grade No. 1, 1100/1365 lbs. sl. bulls 58.00-64.75.

CALVES 215...One Choice vealer 98.00, Standard and Good 70/95 lbs. 72.00-78.00, few Utility 55/75 lbs. 53.00-65.00. Farm Calves: Holstein Bulls No. 1, 90/130 lbs. 110.00-156.00, No. 2, 85/130 lbs. 75.00-100.00; Hol. Heifers 80/125 lbs. 90.00-158.00, few down to 75.00.

HOGS 39...Barrows and gilts 2.00 to 3.00 lower. Few Lots US 1-2 225/250 lbs. 58.75-59.00. US No. 1-3 290/660 lbs. sows 46.00-51.00. Few Boars 45.50-47.00.

FEEDER PIGS 19...Few Lots US No. 1-3 20/35 lbs. feeder pigs 25.00-36.50 --- all per head.

SHEEP 2...Couple Choice 115 lbs. spring slaughter lambs 45.00 - all cwt. Few Slaughter ewes 10.00-23.00.

GOATS 0...No market test.

New Holland Livestock

Lancaster County Flash
Lancaster, Pa.
Thursday, August 2, 1990

New Holland-1100
CATTLE: Slaughter steers 25-50 lower; heifers steady to 25 lower; bullocks and bulls steady. Supply includes around 275 cows.

SLAUGHTER STEERS: Choice 2 1150-1425 lb 76.75-78.35; Choice 2-4 1050-1400 lb 74.00-76.50; Mixed Select and Choice 2-3 1100-1450 lb 71.75-74.00; Select 2-3 1100-1375 lb 69.75-71.75.

SLAUGHTER HEIFERS: Few High Choice 1225-1325 lb 74.75-75.85; Choice 2-4 1050-1200 lb 71.85-74.00.

BULLOCKS: Few Select and Choice 2-3 900-1050 lb 62.25-65.50.

BULLS: Yield grade 1 1150-1600 lb 66.75-69.75; High boning 72.00-75.25; Yield grade 2 1075-1300 lb 64.50-66.75; Low dressing 925-1200 lb 59.50-62.75.

Valley Livestock

Athens, Pa.
Monday, July 30, 1990
Report supplied by auction

HOLSTEIN HEIFER CALVES TO 175.00.

VEAL CALVES TO 101.00.

VEALER BULL CALVES TO 175.00.

SLAUGHTER CALVES 80.00 AND DOWN.

GRASSERS & FEEDERS 48.00-72.00.

LAMBS 50.00-60.00.

SHEEP 14.00-28.00.

HOGS 200 TO 250 LBS. 52.00-58.50.

SOWS 40.00-47.00.

BOARS TO 45.00.

PIGS TO 38.00.

HEIFERS 52.00-57.00.

STEERS 54.00-63.00.

FEEDER STEERS 50.00-75.00.

BULLS 54.00-64.00.

COWS GOOD 52.00-57.75.

COWS MEDIUM 48.00-52.00.

COWS POOR OR SMALL 48.00 AND DOWN.

CATTLE MARKET STEADY.

CALF MARKET STEADY.

HORSES TO 600.00.

PONIES NONE.

GOATS TO 72.00.

PRICES ABOUT STEADY.

Lancaster County Weekly

Lancaster, Pa.
Friday, August 3, 1990
Cattle Calves

This Week 3125 1555
Last Week 2053 1612
Last Year 2914 1887

CATTLE: Compared to last week slaughter steers mostly steady, but turned 50 lower by the week's end; slaughter heifers steady to 25 lower. Thursday buyer interest turned light as future prices took a downward turn and mid-week beef prices softened. Overall quality of cattle remained attractive. Cows 25-50 higher; bullocks steady; bulls steady to 1.00 higher. Supply included 64% slaughter steers, 5% slaughter heifers, 25% cows, 5% bulls, with the balance feeders.

SLAUGHTER STEERS: High Choice and Prime 2-4 1150-1500 lb 77.00-78.35, late down to 76.85; Choice 2-4 1050-1450 lb 74.00-76.50; mixed Select and Choice 2-3 1050-1475 lb 71.75-74.00; returned to feed 800-1250 lb 70.00-75.50; Select 1-3 1100-1375 lb 69.75-71.75. HOLSTEINS: Choice 1100-1575 lb 70.50-73.75; mixed Select and Choice 1200-1525 lb 65.75-69.50.

SLAUGHTER HEIFERS: High Choice and Prime 2-4 1075-1325 lb 74.50-75.85; Choice 2-3 950-1200 lb 71.85-74.00.

COWS: LOW DRESSING BULK HIGH DRESSING Breaking Utility and Commercial 2-4 50.75-51.25 52.50-56.00 56.25-59.25 Cutter and Boning Utility 1-2 49.75-52.00 52.75-56.00 56.25-59.25. Canner and low Cutter 46.00-49.50.

BULLOCKS: Mixed Select and Choice 1-3 950-1200 lb 62.00-66.75.

BULLS: Yield grade 1 1300-2000 lb 66.00-69.50, high boning 72.00-77.00; Yield grade 2 1050-1300 lb 62.75-65.75, low dressing 925-1200 lb 58.00-61.75.

VEAL CALVES: Vealers steady to 7.00 lower; slaughter calves steady to 3.00 higher. Demand good for Holstein heifers to return to farm, but only fair for Holstein bulls.

VEALERS: High Good and low Choice 125-365 lb 95.00-105.00; Good 70-130 lb 60.00-75.00; Standard and low Good 50-75 lb 45.00-60.00.

SLAUGHTER CALVES: Choice 175-350 lb 110.00-120.00; Good and Choice 150-350 lb 75.00-95.00.

RETURNED TO FARM: Holstein bulls, 90-125 lb 125.00-150.00; small frame 95-115 lb 100.00-120.00. Holstein heifers, 90-115 lb 140.00-185.00, few early 185.00-210.00; small frame 80-100 lb 100.00-135.00.

VINTAGE SALES STABLES, INC.



COMPETITION IS THE ADVANTAGE MARKET YOUR LIVESTOCK THE VINTAGE WAY



TUESDAY 11:00 A.M.

SLAUGHTER CATTLE AUCTION— STEERS, BULLS, HEIFERS, COWS, FEEDER CATTLE

7:30 P.M.

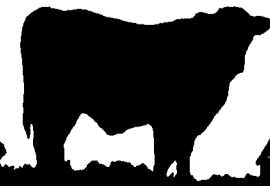
CALVES, SHEEP, GOATS * GET CALVES IN EARLY— OUR STATE GRADER STARTS AT 1:00 P.M.

★ NEW ★ FEEDER & STOCKER ORDERS NOW BEING TAKEN

"A VINTAGE CUSTOMER IS A HAPPY CUSTOMER"

L. ROBERT FRAME, SR.; PRESIDENT
GLENN S. FRAME, MANAGER
BUS (717) 442-4181
BUS (717) 768-8204
HOME (215) 458-8518
IRWIN MARTIN, FIELD REP. (717) 733-7434
KENNETH E. HERSHEY, FIELD REP. (717) 442-4874

TRUCKING SERVICE AVAIL-LOCAL & LONG DISTANCE (RT. 30, 10 MILES EAST OF LANCASTER IN PARADISE, PA)



LEBANON VALLEY LIVESTOCK MARKET, INC.

1 mile East of Fredericksburg along Rt. 22
PHONE JONESTOWN 865-2881

Flea Market Auction every Tuesday at 12:30. Tools, Eggs, Produce, etc. Buyers & Sellers Welcome

Open 24 hours a day 365 days a year (717) 394-2611

AUCTIONS

MONDAY
9:00 A.M. — Slaughter Bulls, Heifers, Steers, Cows
10:00 A.M. — Goats, Veal Calves, Lambs
12 Noon — Slaughter Hogs
WEDNESDAY
8:00 A.M. — Slaughter Hogs
10:00 A.M. — Slaughter Bulls, Heifers, Steers, Cows
11:00 A.M. — Veal Calves, Lambs
FRIDAY
11:00 A.M. — Stocker and Feeder Cattle
SATURDAY
8:00 A.M. — Slaughter Hogs

Next Feeder Cattle Sales

Fri., Aug. 10 & Fri., Aug. 24 11:00 A.M.

LANCASTER STOCKYARDS, INC.

1147 Lititz Pike Lancaster, Pennsylvania 17601
Serving The Community For 90 Years

B&R CATTLE CO.
RD 1, Marietta, PA 17547
Office Phone: (717) 653-8164
Specializing In Stockers & Feeders
JOHN BOWMAN Ph (717) 653-5728
RON RANCK Ph (717) 656-9849

HAY, STRAW & CORN — SALE —

Every Friday At 11 AM

GREEN DRAGON MARKET & AUCTION

RD No. 4 Ephrata, Pa. 717-738-1117
1 mile North of Ephrata on N. State St.
Out of State Buyers - Cash or Certified Check Only