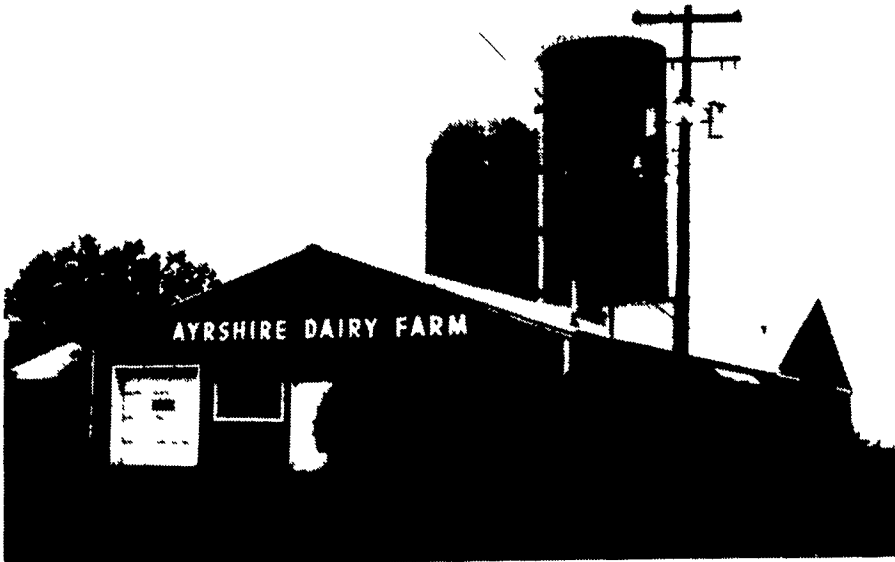
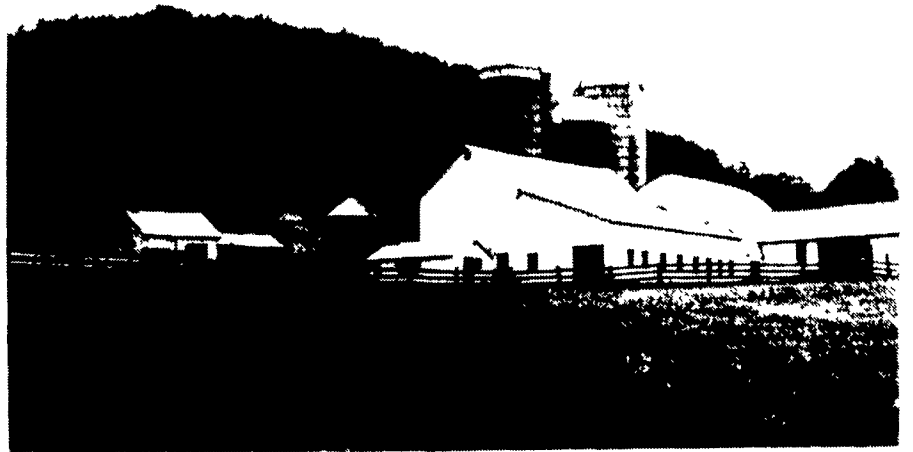


Elk County



Ayrshire Dairy Farm, in Elk County, is operated by Charles Uhl, his brother James, sister Gertrude Hippchen, and James' son Timothy, 21, and nephews Steven, 19 and Wesley, 19. More than 300 acres are farmed, with Ayrshires and Holsteins numbering about 110 head, and the young stock numbers about 35. The farm has been in the family for about 74 years. Ayrshire Dairy also operates a dairy store on the farm which has self-service gas. An Ayrshire cow, made of fiberglass and measuring 15 feet tall, 20 feet long, and 5 feet wide at a total of 1,200 pounds has greeted visitors for 25 years — and has often been the background for many wedding and other pictures by visitors to the farm, said Gertrude.



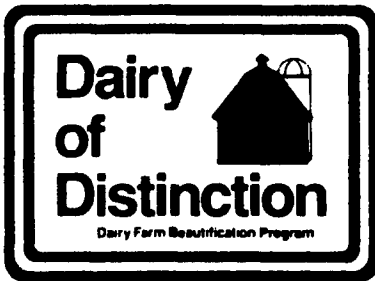
George Swanson operates Toby Valley Dairy farm in Elk County with 300 acres. The herd average for the 35 head of Holsteins is 14,000 pounds and 40 young stock are maintained on the farm. The Dairy of Distinction farm has been in the family about 50 years, according to George's wife, Ann. The farm is operated by George A. Swanson, Ann, and nephews Pete Vollmer, 18 and Pat Vollmer, 16 and Scott Vollmer, 21, in addition to a stepson, Allen Ginther, 14. While farming may be hard and time-consuming, the Swansons also drive three schoolbuses for schools in the St. Marys area.

Erie County

Robert McLaughlin, his wife Jan and son Joe, 12, operate this 135-acre farm in McKean, Pennsylvania. They raise 35 head of Holstein and their herd average is 16,900 pounds. The farm has been in the family about 110 years.



Erb & Henry Equip., Inc. Congratulates



AWARD WINNERS!

See Or Call Us For The Equipment You Need...



Farm Equipment



Livestock Systems

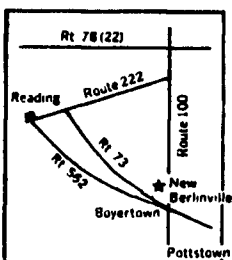


ERB & HENRY EQUIP., INC.

New Berlinville, Pa. (1 Mile North Of Boyertown)

215-367-2169 Fax: 215-367-6715

Hours: Mon. to Fri. 7:30 to 5:00; Sat. 7:30 to 3:00



We Proudly Salute The Dairy Of Distinction Award Winners For A Job Well Done!

THE ATO OF THE FUTURE IS HERE, TODAY.



De Laval proudly introduces the **SST II SS™**, an automatic take-off unit that combines the power and versatility of electronic controls with the beauty and durability of stainless steel.

The unit's breakthrough design makes it a perfect choice if you need basic automation today or plan to totally automate your dairy in the future. Fully programmable and constructed of 304 stainless steel for rugged service, the **SST II SS** interfaces with 2 (soon to be 3) types of DHIA-approved milk meters.

To learn more about the **SST II SS**, and our other advances in milking automation, just give your independent De Laval dealer a call.



CERTIFIED SERVICEMEN Install & Service From Radio Dispatched Trucks. Route Trucks To Serve You.

AUTHORIZED DISTRIBUTOR

J.B. ZIMMERMAN & SONS, INC.

P.O. Box 337 Blue Ball, PA 17506

East Of New Holland On Rt. 23

CALL (717) 354-4955

LANCASTER CO.

Salesman: Ralph Stoltzfus
Home Ph: (717) 859-3119

LEBANON & DAUPHIN CO.

Salesman: Arthur Dows
Home Ph: (717) 944-6034