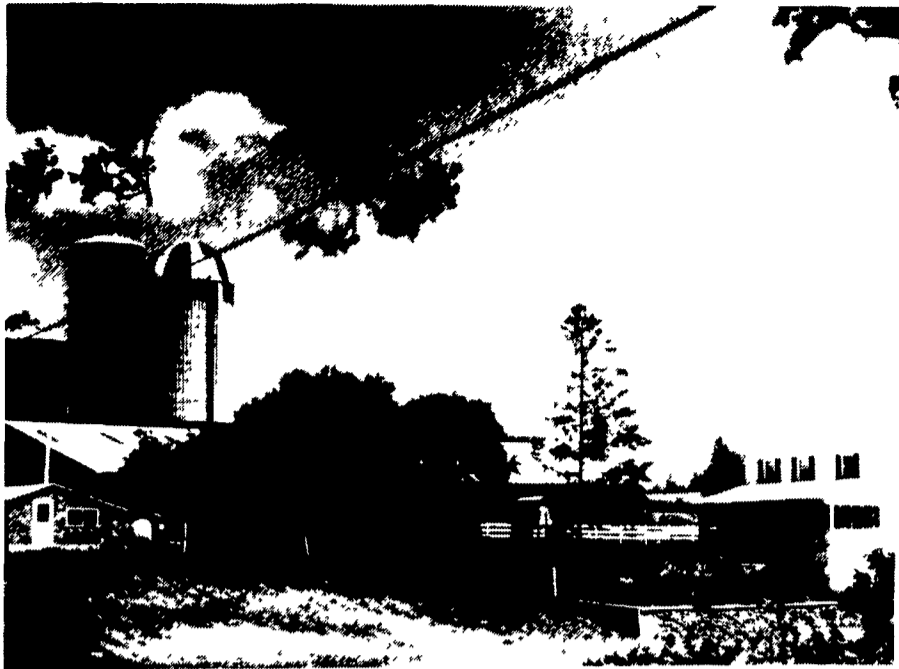


Blair County

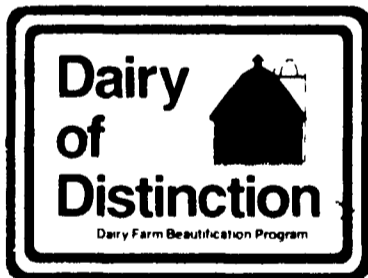


Cross Country Farms, located two miles south of Williamsburg, near Clover Creek Road, includes more than 500 acres of land, although only about 300 is actually farmed. The farm has been in the family since 1875 and has just qualified for a Century Farm this year. J. Edward Biddle and son Michael milk about 115 mixed grade and registered Holsteins and keep about 125 young stock on hand. In addition to a double-six herringbone milking parlor, the Biddles have used a computerized feeder for the last four years that the Biddles claim has paid for itself in the first year. The farm is also a farm vacation home that goes by the name of Clover Paradise and is run La Donna Biddle, wife of Edward. She said the vacation home is designed for couples with children who would like to enjoy the country and expose their young to rural life and farm animals. Additionally, Edward has converted the top of an old barn into a small museum for farm equipment.



McCutcheon's Maple Kroft Farm comprises 410 acres of mixed forest and tillable soils and serves as the site of a 55-cow milking herd of mostly grade Holsteins. To make life at the farm even sweeter, the maple trees that line the farm lane give up about 5 gallons of pancake syrup to the father and son-in-law operation. In the family since 1950, Joseph and Vevala McCutcheon and Vevala's father and mother, Joseph C. Sr. and June, keep about 35 replacement helpers and calves and the milking herd produces about 16,650 pounds of milk testing about 3.6 butterfat. History is reputed to surround the farmsite: The barn was built in 1851 and probably housed the cavalry during the Civil War. Located between Altoona and Tyrone, along Rt. 220, in the mountain basin of Sinking Valley, Vevala said the family has the best of both worlds; being able to commute to either city for shopping trips and retreating back over a mountain ridge to the calm and quietude of their home. The woodlands on the farm are primarily walnut and cherry hardwoods and are harvested from time to time. Joseph and Vevala have three daughters, Racheal, Leah, and Sara.

Congratulations...



AWARD WINNERS!

From The
**DAIRY FARM EQUIPMENT
DIVISION
OF**

Longacre
ELECTRICAL SERVICE, INC.

602 Main St.
Bally, Pa. 19503

DIAL
215-845-2261



Congratulations To The Dairy Of Distinction Award Winners



Kidd
BIG BALE CHOPPERS

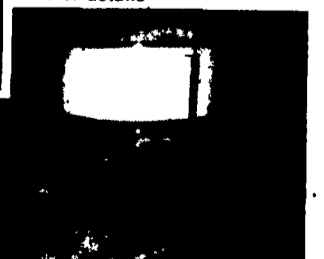
*When
only
the
best
will
do!*



These machines will handle ROUND OR ANY SIZE RECTANGULAR BALES for ANIMAL BEDDING in POLE BARNs, CALF PENS, HOG HUTS, FREE STALLS, MULTI-STORY BARNs, POULTRY AND DUCK HOUSES

They work well with PAPER/NEWSPRINT (Cattle Bedding) and are ideal for MULCHING Hand held BLOWER TUBE permits complete versatility and HEIGHT EXTENSION DISCHARGE allows filling of FEEDER WAGONS etc Tub diameters from 4ft 11 ins to 7ft 0ins

Get the facts send for full colour brochure and Kidd Dealer details



Distributed By:

Phone (717) 249 6720



CUMMINGS & BRICKER INC

1000 N. 10th St.
P.O. Box 1000
Lancaster, Pa. 17303