

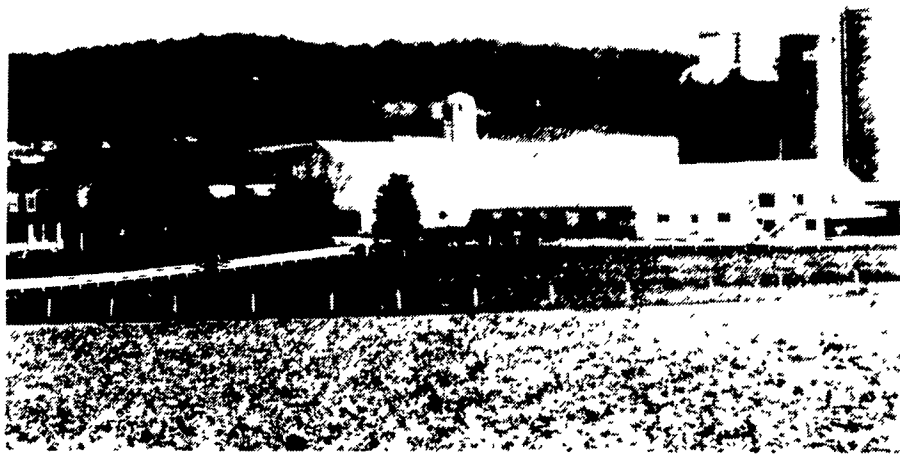
Bedford County



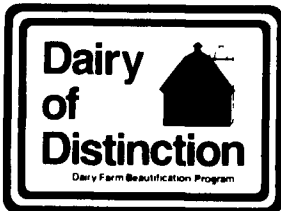
Fair Farms is plural for good reason; Ralph and Geraldine Fair have about 600 acres on 6 farms that were combined over four generations to create the dairy operation. The main farm is located about 4 miles west of Mann's Choice on Rt. 31. The couple milk 65 grade Holsteins that are not on test. They keep about as many young stock for replacement. Of the couple's children, two help out on the farm and three are currently going to University of Pittsburgh.



Since 1929 this beautiful 170-acre farm has been in the care of the Over lineage. Now husband and wife Byron and Delma keep Cove Crest Farms in business with a herd of about 64 milking Registered Holsteins and about 40 young stock. The place is located along Rt. 36, about 5 miles south of Roaring Spring. The registered animals produce an average 21,900 pounds of milk for the couple with a 792 butterfat and 704 protein content marketed through Atlantic Dairies. Some hired help keeps things moving on the strictly milk sales operation. The barn is free stall and the manure is handled through a semi-solid system.



This 1,300 acre farm is run by a father and son team, Oble and Bruce Snider. Located along Rt. 220 at Imler, the farm is called Singing Brook Farms and the team milk about 200 registered Holsteins and cash crop corn on anywhere from 200 to 250 acres. According to Oble Snider, the rolling herd average is 19,800 and replacement stock number about 185. The farm has been in the family since 1951 and has seen some changes. The two milk with a rotary parlor twice a day and have a liquid manure system. Other sources of revenue to the farm include the sale of breeding stock, bulls, and embryos.



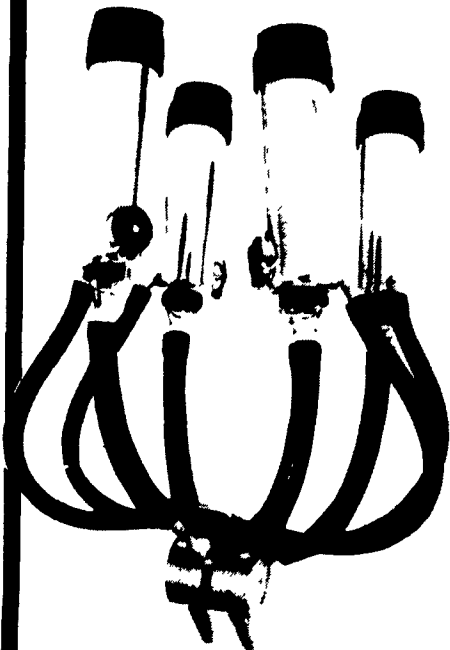
Congratulations
DAIRY of DISTINCTION
AWARD WINNERS



**THE WESTFALIA
BIO-MILKER**



It's Something Else!



Would Fast Milking, Good Clean Milk Out, Minimal Liner Slip And Reduced Udder Stress Benefit Your Cow's Performance?

**WHO IS THE PATENTED
BIO-MILKER FOR?**

Any Dairyman Concerned With Both Udder Health And Milking Efficiency.

The Bio-Milker features a synchronized-automatic air-inlet valve just under the teat tip. Air enters only during the release phase. A perfectly timed air burst quickly moves the milk away from the teat. This reduces the risk of infection by limiting teat impacts. Also, vacuum is utilized to provide a biologically desired pressure release of teat tissue. Westfalia's Bio-Milker is the ultimate in milking quality.

TRY US NOW!

Proudly Sold And Serviced By:

FISHER & THOMPSON, INC.

Milk Equipment Sales & Service

127 Newport Rd.

Leola, PA

(717) 656-3307

24 HR. SERVICE

Amos Fisher
(717) 687-8871

Leasing Programs
Available

Rich Thompson
(717) 627-1162

W&J
WALTER & JACKSON, INC.

Salutes
the

*Pennsylvania Dairy of
Distinction Award Winners*

SERVING THE AREAS BUILDING NEEDS SINCE 1872

RESIDENTIAL • COMMERCIAL • AGRICULTURAL

- | | |
|---------------------------|-------------------------------|
| ✓ Lumber | ✓ Millwork |
| ✓ Pole Barns | ✓ Trusses |
| ✓ Insulation | ✓ Owens Corning Roofing |
| ✓ Stanley Doors | ✓ Design and Plan Services |
| ✓ Glen Gery Brick | ✓ Andersen & Marvin Windows |
| ✓ Treated Yellow Pine | ✓ Paneling & Ceiling Material |
| ✓ Aristokraft Kitchens | ✓ Wheeling Channel Drain |
| ✓ Aluminum & Vinyl Siding | ✓ Cedar Siding |
| ✓ Weathershield | ✓ Metered Concrete |

W&J
WALTER & JACKSON, INC.

All Locations Open Mon.-Fri. 6:30; Fri. 6:30-12:00

HINKLETOWN (Farmersville Rd.) 717-354-4911

CHRISTIANA (E. Gay St.) 215-593-5195 or 215-857-2613

QUARRYVILLE (18 N. Hess St.) 717-786-2171