

**Philadelphia
Potato & Onion**
Philadelphia, Pa.

Wednesday, August 1, 1990
ONIONS-DRY ABOUT STEADY 50-lb sacks US#1 or generally good qual and cond new crop Yellow unless otherwise stated CA Grano type jbo incl fair cond 750-800 mos 800 NM Grano & Spanish hybrid type White jumbo 12.00 fair cond 800 TX Spanish Hybrid type jbo ibcl fair cond 750-800 repacker sz 850-900 White jumbo fair cond 10.00-11.00 NY Globe type Red 25-lb sacks lge 9.50-10.00.
POTATOES ABOUT STEADY 50-lb sacks US#1 size A washed or brushed unless otherwise stated ROUND WHITES new crop DE 450-550 mos 500 lge 725-800 mos 750 some loas 700 NJ 450-500 VA 450 few 500 lge 7-7.50 fair qual 650 ROUND REDS new crop TX incl 50-lb ctn 10.00-12.00 sz B 12.00-13.00 WI sz B 11.00-13.00 DE 800 sz B 10.00 CA 50-lb ctn 10.00-12.00 RUSSETS 50-lb ctn count unless otherwise stated ID 70-80s 22.50-23.00 mos 23.00 90s 21.00- 22.00 mos 22.00 100s 20.00-21.00 mos 20.00 WA Norkotahs new crop 70s 17.00-18.00 80s 18.00-19.00 some 17.00 90s 16.00-18.00 mos 18.00 100s 15.00-17.00.

**New Jersey
Fruit**

Bridgeton, New Jersey
Wednesday, August 1, 1990
SOUTH NEW JERSEY Sales fob shipping point basis.

PEACHES (Reported Mon-Wed-Fri) Demand good for limited supplies. Market higher. 38 lb. carton hydrocooled U.S. Extra One and some no grade mark. Various yellow flesh varieties mostly Redhaven and some Loring. Wide range in quality. 2-3/4 inch and up too few to quote 2 1/2-2 3/4 inch including 2 1/2 inch and up 18.00-20.00 mostly 20.00 few including one brand 22.00 few fair quality 14.00-16.00 2 1/4-2 1/2 inch including 2 1/4 inch and up 16.00-18.00 mostly 18.00 2 1/8-2 1/4 inch too few to quote 2 2-1/8 inch too few to quote.

**Laurel Delaware
Fruit & Vegetable
Market**

Laurel, Delaware
Wednesday, August 1, 1990
PRICES TO GROWERS FOR WEDNESDAY AUGUST 1, 1990.
BEANS (8) Bushels 6.50 BEANS-LIMA (3) Bushels 8.00-22.00 CORN (1050) Dozen Per Dozen White .50-.90 CUCUMBERS (17) Baskets 2.00- 7.50 BGGPLANTS (3) Carton 5.00 PEPPERS (43) Bushel Green 5.00- 9.00 Red 6.50 SQUASH (36) Baskets Yellow Straight-neck 2.00- 3.00 Zucchini 2.00- 5.00 TOMATOES (974) 25-lb Cartons Pink 2.00- 5.00 Red 2.00- 5.50.
PEACHES (2) Baskets 10.00.
CANTALOUPS (16,924) Per Melon Superstar .40-.90 Premo .60 HONEY-DEWS (251) Each .70-.95 MISC MELONS Crenshaws (66) Each .80-1.00

WATERMELONS (19,716) Per Melon Crimson Sweet 12-14 lb .40- 1.00 15-19 lb 1.15- 2.00 20-24 lb 1.20- 2.70 25-29 lb 1.70- 2.90 30-34 lb 2.45- 3.40 Jubilee 20-24 lb 1.00- 2.25 25-29 lb 1.90- 2.45 30-34 lb 3.55 40-44 lb 3.60 Long Gray 20-24 b 1.95 Sangria 25-29 lb 2.75 SUGAR BABY (943) Each .55- 1.05 POTATOES (3) Baskets 4.50 PER CWT All Sweet 20-24 lb 10.25 Long Gray 15-19 lb 7.75- 8.00 20-24 lb 8.50- 8.70.

**Southern Maryland
Regional Farmers Market
Wholesale Produce
Auction**

Cheltenham, Md.
Sale Days: Fri., Mon., and Wed., 11:30 a.m.
Produce Hotline: 1-301-372-1066
Report Supplied by Auction July 27, 30 & Aug. 1
GREEN BEANS: 3.50-14.00 BU.
LIMA BEANS: 16.50-18.00 BU.
CABBAGE: WHITE 4.00-4.25 % BU.
CUCUMBERS: SMALL 5.00-10.00; MEDIUM 6.00-11.50; LARGE 6.00-9.00, ALL 1 1/9 BU.
EGGPLANT: 3.00-8.00 1 1/9 BU.
OKRA: 1.00-19.00 % BU.
PEPPERS: GREEN AS FOLLOWS, SMALL 3.00-11.00, MEDIUM 2.00-8.00, LARGE 3.00-12.00, ALL 1 1/9 BU.; CHERRY 5.50-8.00 % BU.; HOT BANANA 5.00-7.00 % BU.; HOT CAYENNE 4.00-9.00 % BU.; JALAPENO 7.00-9.00 % BU.; SWEET BANANA 2.00-4.00 %

BU.
PICKLES: SMALL 3.50-12.00 % BU.; LARGE 10.00-11.00 % BU.
POTATOES: RED, 5.00-6.00 BU., WHITE 4.00-8.00 BU.
SQUASH: PATTYPAN 1.00-6.00 % BU., YELLOW 1.00-6.00 % BU., ZUCCHINI 1.00-6.00 % BU.
SWEET CORN: BULK .50-1.95 DOZ., 1.45-6.00 5 DOZ. BOX.
TOMATOES: EXSMALL 5.00; SM. 2.50-5.50; MEDIUM 2.00-9.00; LARGE 2.00-11.00; XLGE. 3.00-12.00, ALL 25 LBS.; MEDIUM 4.00-13.00 BU.; LARGE 5.00-11.50 BU.; CHERRY 6.00-8.50 12 PT. FLAT; ITAL. PASTE 5.50 25 LBS.
APPLES: JERSEY MACS 4.00 % BU. MEDIUM; PAULA RED 8.50-9.00 BU.
BLACKBERRY: 7.50-9.00 12 PINT FLAT.
CANTALOPES: BULK, SM. .20-40 EACH; MED. .25-1.10 EACH; LGE. .45-1.00 EACH; MIXED SIZES BULK .40-1.05; 8 CT. BOX 5.00-10.00; 10 CT. BOX 4.75-12.00; 12 CT. BOX 3.50-10.50.
NECTARINES: MEDIUM 3.00-22.00 % BU.
PEACHES: MEDIUM 7.00-8.50 % BU.; LARGE 7.00-11.00 % BU.
PEARS: 7.50 % BU.
WATERMELONS: BULK SMALL 1.45; MEDIUM 1.25-4.00; LARGE 2.00-3.25; BULK MIXED 1.25-2.45.
GERANIUMS: 15 POT FLAT 3.00-3.50.
CUT FLOWERS AND BUNCHED: 2.00-4.50.

ERS 61.50-78.50.
CALVES 358. PRIME 104.00-109.50; CHOICE 98.50-102.50, GOOD 91.50-97.50, STANDARD & GOOD 82.50-90.50, 90-110 LBS. 78.50-92.50, 65-90 LBS. 65.00-82.50, HOLSTEIN BULLS 90-130 LBS. 102.50-142.50, HOLSTEIN HEIFERS 90-130 LBS. 92.50-156.50.
HOGS 84. US NO. 1-2 61.25-62.25, US NO. 1-3 58.00-60.50.
SOWS: US NO. 1-3 44.50-49.25.
BOARS 44.00-47.25.
FEEDER PIGS 37. US NO. 1-3 20-35 LBS. 18.50-32.50 PER HEAD, NO. 1-3 35-50 LBS. 34.50-46.50 PER HEAD.
SHEEP 119. CHOICE 52.50-55.25; GOOD 48.50-51.50; SLAUGHTER EWES 16.50-28.50.
GOATS: 22.00-58.50 PER HEAD.
HAY: 8 LOADS, 40.00-126.00.
STRAW: 3 LOADS, 35.00-56.00.

**Grantsville
Livestock**

Grantsville, Maryland
Sat., July 28, 1990
HOGS: TOP BARROWS & GILTS 59.00-60.20; HEAVY BUTCHER 57.00-59.50; LIGHT BUTCHER 50.75-60.20; BUTCHER SOWS 42.75-46.50; FEEDER SHOATS 31.00-44.00.
VEAL: GOOD 1.00-1.20; STANDARD 87.00-1.00; UTILITY 60.00-85.00; BULL CALVES 1.10-1.32.50
SHEEP & LAMBS: GOOD 50.00-51.00; UTILITY 41.00-45.00; SLAUGHTER EWES 22.00
SLAUGHTER CATTLE: STEERS: GOOD 72.75-74.00; STANDARD 63.75-65.00. HEIFERS: NONE AVAILABLE.
COWS: COMMERCIAL 52.00-60.75; UTILITY 50.00-55.00; CANNER AND CUTTER 45.75-50.00.
BULLS: COMMERCIAL & GOOD 65.00-73.85; CUTTER & UTILITY 59.25-65.00.
STOCK-FEEDER CATTLE: GOOD 67.00-78.00.
STEER CALVES: GOOD 85.00-97.00. HEIFER CALVES: GOOD 80.00-93.00.

**Morrisons Cove
Livestock**

Martinsburg, Pa.
July 30, 1990
Report supplied by auction
CATTLE 169. STEERS: H. CHOICE & PRIME 75.50-76.85, CHOICE 72.50-75.25, GOOD 68.25-69.75, STANDARD 65.00-67.50.
HEIFERS: CHOICE 70.50-73.25; GOOD 62.50-70.25.
COWS: UTILITY & COMMERCIAL 55.75-59.25; CUTTERS 52.50-56.25, CANNER & LOW CUTTER 45.00-52.25.
BULLOCKS: GOOD & CHOICE 66.50-70.25.
BULLS: YIELD GRADE NO. 1 64.00-70.75.
FEEDER CATTLE: STEERS 68.50-96.50, BULLS 66.50-92.50; HEIF-

Come See For Yourself
"LOW INPUT/SUSTAINABLE AGRICULTURE"
profitable

Want to find out what we mean when we say "Low Input, Profitable Agriculture?" If you follow the "Seeing is Believing" theory, we'd like to visit with you. We'll show you how **Growers Fertilizer Solutions'** 40 years of research can help you follow a low input, high-profit sustainable non-polluting fertilizer program.

Visit Our Display - Chat With The Experts At The
AG PROGRESS DAYS
West Second Street

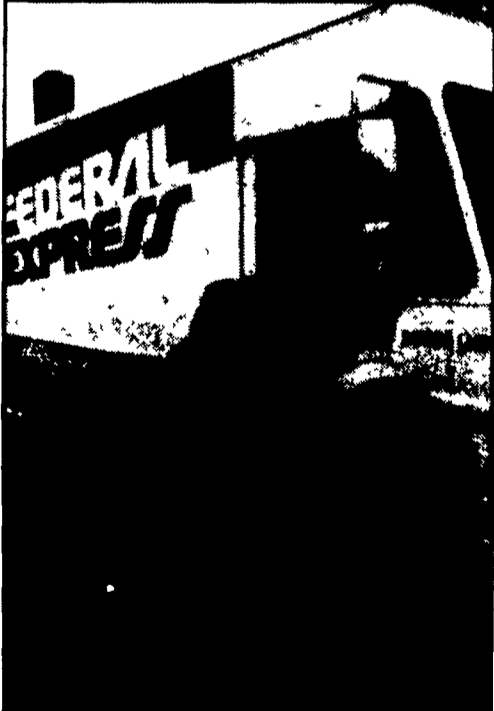
**Growers
FERTILIZER SOLUTIONS**
MILAN, OHIO 44846 (419) 499-2508
"Our Research Is Your Profit"

For more information and directions call Growers main office collect (419) 499 2508 or contact
Melvin Martin, Lltitz (717)626-7138
Bev Mast, Oxford (215) 932-4296

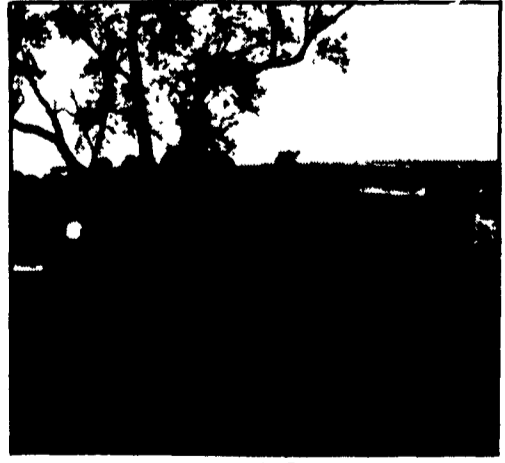
VEAL GROWERS:
Susquehanna Industries, Inc., the manufacturer of **QUANTOCK VEAL FEEDS** is taking a major step toward helping veal growers become more independent.
Quality veal growers seeking a line of credit to expand or reach an independent status are invited to contact Susquehanna Industries for further details
SUSQUEHANNA
INDUSTRIES INC
Rt. 171 Box 41-C, Susquehanna, PA 18847
1-800-232-8325 or (717) 853-4000
Pat Fallon, VP, home, 1-800-223-8325

**KING'S AUCTION
KIRKWOOD
Hay, Straw and
Grain Auction
EVERY TUESDAY
12:00**
Located Rt. 472 5 miles south of Quarryville or 6 miles north of Oxford corner of Rt. 472 and Noble Road at Rouse Tobacco Station.
Lloyd H. Kreider,
Auctioneer
AU-000513L
No out of state checks
**ALL TRUCKERS AND
FARMERS WELCOME**

HOOPER
C.B. HOOPER & SON, INC. Intercourse, PA (717) 768-8231
HOOPER EQUIPMENT, INC. Middletown, DE (302) 378-9555
TWO LOCATIONS
The Saving Place



**WE SHIP
PARTS DAILY**
Via FED. EXP. - UPS - PPSH -
BUS - AIR FREIGHT, ETC.



UPS
YOU STAY PUT
Pick Up Your Phone And Place Your Parts Order With Us

FEDERAL EXPRESS
HOURS
Mon.-Fri. 7 AM-5 PM; Sat. 7 AM-Noon
CALL US...
It Could Be We Have It

case
Authorized
UPS Station

**Dairy Farmers!
Delvotest
Can Save More
Than Your Milk!**

Buy a Delvotest Block Heater before August 31, 1990, and get a FREE Delvotest Kit (a \$25 value!)
You know you can't afford to keep your treated cows out of the milking herd one minute longer than necessary. You won't have to with Delvotest.
Delvotest lets you know your milk is free of antibiotics. And with the guesswork taken out, you can be assured that you'll never contaminate your bulk tank.
Delvotest is simple to use, and the best part is, it can be conducted right in your own milk room.
Take advantage of the Delvotest money-saving offer! Buy your block heater today and get your Delvotest Kit FREE! Call Eastern Crown at 315-829-3505.

EASTERN CROWN INC.
P.O. BOX 216, VERNON, NY 13476