

Morrisons Cove

Livestock

Martinsburg, Pa.
July 23, 1990

Report supplied by auction

CATTLE 150 STEERS: H. CHOICE & PRIME 72.50-74.50, CHOICE 70.00-72.25, GOOD 67.50-70.00, STANDARD 60.50-66.50.
HEIFERS CHOICE 70.00-72.25, GOOD 60.50-68.50.

COWS UTILITY & COMMERCIAL 53.50-57.25; CUTTERS 51.50-53.25, CANNER & LOW CUTTER 43.50-51.25.

BULLOCKS: GOOD & CHOICE 66.50-70.25.

BULLS: YIELD GRADE NO. 1 62.50-69.75.

FEEDER CATTLE: STEERS 67.50-92.50, BULLS 65.00-84.50; HEIFERS 63.00-79.50.

CALVES 364. PRIME 103.00-108.50; CHOICE 92.50-100.50, GOOD 82.50-91.50, STANDARD & GOOD 74.50-81.50, 90-110 LBS. 76.50-92.50, 65-90 LBS. 68.50-87.50, HOLSTEIN BULLS 90-130 LBS. 122.50-178.50; HOLSTEIN HEIFERS 90-130 LBS. 121.00-172.50.

HOGS 136. US NO. 1-2 61.50-62.75, US NO. 1-3 58.50-61.25.

SOWS: US NO. 1-3 46.50-51.25.

BOARS 44.00-48.25.

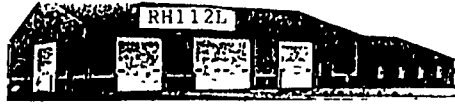
FEEDER PIGS 111. US NO. 1-3 20-35 LBS. 18.50-32.50 PER HEAD, NO. 1-3 35-50 LBS. 35.50-55.00 PER HEAD.

SHEEP 57. CHOICE 52.50-54.50; GOOD 49.00-51.50; SLAUGHTER EWES 18.50-32.50.

GOATS: 22.50-54.00 PER HEAD.

HAY: 7 LOADS, 44.00-133.00.

STRAW: 1 LOAD, 49.00.



Diffenbach's New Holland Auction Center, Ltd.
100 WEST JACKSON ST. • BOX 485 • NEW HOLLAND, PA. 17557
PHONE (717) 355-7253 (717) 393-4464 (717) 354-3297

You Can Buy

You Can Sell

HAY SALE EVERY MONDAY- 10:00 A.M.

1990 SPECIAL SALES

JULY 1990						
S	M	T	W	T	F	S
1	2	3	4	5	6	7
8	9	10	11	12	13	14
15	16	17	18	19	20	21
22	23	24	25	26	27	28
29	30	31	-	-	-	-

AUGUST 1990						
S	M	T	W	T	F	S
-	-	1	2	3	4	5
6	7	8	9	10	11	12
13	14	15	16	17	18	19
20	21	22	23	24	25	26
27	28	29	30	31	-	-

SEPTEMBER 1990						
S	M	T	W	T	F	S
-	-	-	-	-	1	2
3	4	5	6	7	8	9
10	11	12	13	14	15	16
17	18	19	20	21	22	23
24	25	26	27	28	29	30

OCTOBER 1990						
S	M	T	W	T	F	S
-	1	2	3	4	5	6
7	8	9	10	11	12	13
14	15	16	17	18	19	20
21	22	23	24	25	26	27
28	29	30	31	-	-	-

NOVEMBER 1990						
S	M	T	W	T	F	S
-	-	-	-	-	1	2
3	4	5	6	7	8	9
10	11	12	13	14	15	16
17	18	19	20	21	22	23
24	25	26	27	28	29	30

DECEMBER 1990						
S	M	T	W	T	F	S
-	-	-	-	-	1	2
3	4	5	6	7	8	9
10	11	12	13	14	15	16
17	18	19	20	21	22	23
24	25	26	27	28	29	30

- TUES. EVE. JULY 31 7:00 P.M. Wholesale Inventory Reduction of Crafts and Gift Items, many case lots.
- SAT. AUG. 11 9:00 A.M. Elizabeth L. Herr, 1347 Beaver Valley Pike Willow Street, Pa. RE, Antiques & HH Goods (On the premises)
- FRI. AUG. 17 9:00 A.M. Farm Equipment & Supplies
- TUES. AUG. 28 6:00 P.M. Guns of all descriptions
- SAT. SEPT. 1 1:00 P.M. Valuable 2 parcel Real Estate, Little Britain Twp. for Christ A. Beiler and Jacob Stoltzfoos (On the premises)
- TUES. SEPT. 4 6:00 P.M. Lawn Mowers & Garden Equipment
- FRI. SEPT. 14 9:00 A.M. Farm Equipment & Supplies
- TUES. SEPT. 25 6:00 P.M. Guns of all descriptions
- SAT. OCT. 6 9:00 A.M. Camp Deer Park Benefit Auction
- FRI. OCT. 12 9:00 A.M. Farm Equipment & Supplies
- TUES. & WED., OCT. 23 & 24 9:00 A.M. Quilts, Crafts, & Buggies
- FRI. NOV. 2 9:00 A.M. New solid oak and pine furniture, misc. gift items, variety of imported cuckoo clocks from Germany, tools and HH items.
- FRI. NOV. 9 9:00 A.M. Farm Equipment & Supplies
- SAT. NOV. 24 9:00 A.M. Toys, Crafts, Gifts, & Tools

Contact Us For Rates
And Dates For Your Sales

ADD YOUR SALE TO THIS LISTING NOW!
Diffenbachs Aucts. 225L
Bonded Licensed Livestock Dealer and Order Buyer

Equipped And Ready
To Serve You

SHORT NOTICE HORSE
SALE FRI. EVE. AUG. 3

SPECIAL
HORSE SALE
FRIDAY EVENING,
SEPT. 7 - 7:00 P.M.

NEW HOLLAND SALES STABLES INC.
THE ACTION AUCTION

FALL HEIFER
SALE
SATURDAY,
SEPTEMBER 22

LIVESTOCK IS OUR ONLY BUSINESS

MONDAY

SLAUGHTER HOGS

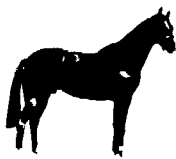


EARLY BIRD HOG SALE
7:30 A.M.

Sell Your Hogs At New Holland Sales Stables, Inc.
See them weighed, sold and pickup your check.

10:00 AM

HORSES MULES



1:30 PM

BEEF SALE



SHEEP



CALVES

WEDNESDAY

DAIRY 11:00 AM COW SALE 12:00 NOON COWS



We have the usual run of 50 to 100 Heifers, all ages.
Loads of fresh cows and springers from our regular shippers.
Also some local fresh cows and springers.

1:30 P.M.
FEEDER PIG SALE



Pigs are accepted after 6:30 A.M. State graded from 8 to 12 Dairy Barn and Feeder Pig Barn are cleaned and disinfected weekly for your protection.

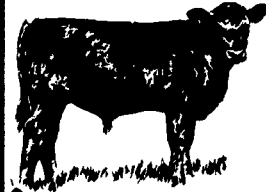
THURSDAY

Beef Auction
10:00 A.M.

BULLS
STEERS
BEEF COWS



STOCKERS
&
FEEDERS



1:30 P.M.

SHEEP
GOATS
CALVES



NEW HOLLAND SALES STABLES, INC.

12 Miles East of Lancaster Off Route 23, New Holland, Penna.

MANAGERS
Norman & David Kolb - 717-397-5538

Field Representatives
Luke Eberly - 215-267-6608 738-1865
Homer Eberly - 215-267-3047

Sale Barn Officer Manager
Roger Floyd - 717-354-4341

Order Buyer
Paul Good - 215-445-6662
Feeder Pig Representative
Mel Hoover - 717-354-8397