

# Field Day

(Continued from Page A30)

rely on timely cutting. There are lady bugs, spiders, and birds in our fields. We never have a field in corn for more than one year. We've had no significant outbreaks of insects or disease since giving up pesticides.

"Since 1981, my dry cows and heifers had access to hillside grass pasture, which was not intensively managed. I didn't pasture milk cows till this year, when I put 46 acres of my best alfalfa land into controlled grazing. I've divided my cows into two groups, high and low producers. The high-producing group goes on the pasture first and low group moves in to clean up. The production of the high group lets me know when it's time to move them. Water is supplied to each paddock through hoses and portable tubs."

According to Engelbert, herd health problems have all but disappeared. There is no ketosis, and the vet is rarely called. Cows rebreed at an average rate. There are few problems with mastitis. Engelbert believes that mastitis comes from other areas, such as injuries.

"Our milk goes through the regular channels and is not marketed

as organic. If we hadn't switched to organic, we probably wouldn't be farming today," said Engelbert.

The seminar was attended by people from all over the state. Typical of those attending were, Alan Knight of Cornell Cooperative Extension, an extension support specialist in the Farming Alternatives Program.

Dick Cook, who is associated with the Garden Shed in Lowville, came to learn new and better ways to do away with chemicals in agriculture. This is a program designed to help people figure out what to do with land and their lifestyle. He is an ag journalist by trade and is now writing a book on deer farming.

Peg Cook, who runs her own soils lab and does crop consultation, came to see the different rotations, methods of pest control, and evaluate their success. Patty Beyer, a Lewis County extension agent, came to learn about the program.

This is one of many seminars NOFA is holding throughout the Northeast this summer.

Following is the schedule for NY and NJ:

**MEYER FARM**  
Rte. 89, Ovid, NY  
August 15, 12-4 p.m.  
Rain Date: August 22

John Meyer grows alfalfa, wheat, soybeans, and other field crops on 630 acres. He began farming in the conventional manner 13 years ago and made a gradual transition to organic management. Practices include crop rotation, use of green and animal manures, and weed control through rotary hoeing and timely cultivation. Organic management has resulted in yields on par with or above average; improved soil tilth; reduced pest and weed pressure; and a profitable farming system. Directions: Farm is between Seneca Falls and Ithaca on the West side of Rte. 89. From junction of Rte. 5 and 20 with 89. From Ithaca, go 25 miles North. Rain Info: (716) 394-3977.

**HAWTHORNE VALLEY FARM**  
Ghent, NY  
August 29, 12-4 p.m.  
Rain Date: Sept. 5

Christoph Meier is General Manager of this 400 acre beodynamic farm that is a branch of the Rudolf Steiner Educational and Farming Association, Inc. The

farm produces organic grains, vegetables, forages, milk, meat and eggs as well as cheese, yogurt, grain products and baked goods. Produce is sold through the large on-farm store, New York City Greenmarket and locally. Directions: Farm in midway between Hudson, NY and Pittsfield, MA. From Rte. 87, exit onto Rte. 23 East. Go through Hudson to Claverack. Left on 217 for 12 miles. Go under the Taconic Pkwy. Farm is 1 mile past the "Harlemville" sign, on the left. Rain Info: (716) 394-3977.

**HEPWORTH FARMS**  
Rte. 9W, Milton, NY  
Sept. 12, 12-4 p.m.  
Rain Date: Sept. 19  
Amy Hepworth and Greg

Gervais raise apples, pears, peaches, plums, cherries, nectarines, apricots, and vegetable on 250 acres. The vegetables and 80 acres of fruit are managed organically, with the remainder in an "ecological" program involving Stage 2 IPM. Although the organic product brings a premium price, Hepworth finds that "there are problems and limitations with organic fruit growing in the Northeast due to weather patterns and pest pressures." The field day will cover both organic and ecological orchard management systems. Directions: Farm is on the West side of Rte. 9W between Newburgh and Poughkeepsie. From Rte. 84, take 9W North 9 miles. From Rte. 55, take 9W South 5 miles. Rain Info: (716) 394-3977.

## New Jersey Announces Dairy Of Distinction

**CEDAR KNOLLS, N.J.** — Eight New Jersey dairy farms were recently recognized through the prestigious Dairy of Distinction award program.

The award pays tribute to the winners for their efforts in maintaining a high quality farm appearance. As a symbol of recognition, recipients receive a colorful plaque to hang from their farm signs.

The 1990 New Jersey Dairy of Distinction recipients include Ern-A-Jean Holsteins, Andover, NJ; Bodine Rothers, Stockton, NJ; Robert DeBlock, Blairstown, NJ; Maplerow Farms, Port Murray, NJ; Franklin Atkinson, Jr., Bridgeton, NJ; Paul Bryan, Trenton, NJ; Bob & Kathy Friberger, Allentown, NJ; and Joseph Valens, Princeton, NJ.

Initiated in 1983, the Dairy of Distinction program has a twofold purpose: to recognize the hard work and dedication of dairymen for keeping their farmsteads well kept, and to instill in consumers a greater sense of confidence in the wholesomeness of dairy products.

Farms that apply are judged on the roadside appearance of buildings, grounds, and surroundings. Winners are judged annually to ensure that they continue to meet the standards of excellence set by the program.

The awards will be presented on September 8, 1990 in connection with the New Jersey state dairy princess coronation. For further information on the award program, contact the American Dairy Association and Dairy Council, Inc., (717) 323-2552.

**EMHERR**

### VENTILATION HEADQUARTERS-COOL OFF WITH HOT PRICES!

#### PLEASANTAIRE STANDARD FANS

12"-Single	\$139.99	Variable	\$192.99
14"-Single	\$145.99	Variable	Now Available
16"-Single	\$153.99	Variable	\$199.99
18"-Single	\$166.99	Variable	\$225.99
20"-Single	\$185.99	Variable	Not Available
24"-Single	\$209.99	Variable	\$275.99

- MOTOR** - Totally enclosed ball bearing with thermal overload protection. Single-speed, two-speed or variable-speed.
- FAN BLADE** - Heavy gauge aluminum, well balanced. Sizes 10", 12", 16", 18", 20", 24"
- HOUSING BOX** - Rugged steel welded construction with durable baked enamel finish
- MOTOR MOUNT** - Heavy welded steel rod.
- SHUTTER** - Aluminum louvers supported by long life nylon bearings



#### SUPER SALE! 56" CEILING FANS CFM's 20,500

Reg. \$99.99 Single Speed Or Variable Speed Available  
SALE \$59.99



#### MiraFount ENERGY FREE WATERERS



PREPARE FOR WINTER WITH SUMMER PRICES!

THE ORIGINAL ENERGY FREE WATERER... COPIED BUT NEVER EQUALLED.



- Cool, Clean Water
- No Algae
- Users Agree... It's Great!

Check Out Our Prices!

**THE NEW TAFCO GALVANIZED SUMMER IS HERE**  
12" Single.....\$79.95  
Variable.....\$99.95  
16" Single.....\$115.95  
Variable.....\$139.95  
20" Single.....\$139.95  
Variable.....\$159.95  
24" Single.....\$189.95  
Variable.....\$219.95



#### 24" CIRCULAR FAN w/Grill Motor, Switch & Plug

**Dayton**  
SINGLE SPEED: SALE-Each.....\$119.99 2 SPEED: 4 to 7 .....\$109.99 Each .....\$139.99 8 or More .....\$99.99 4 Or More \$119.99



#### Dayton BELT DRIVE FANS

**Model 3C615**  
Fan: 36" blade dia. galvanized frame and blade  
Motor: 1/2 HP, 1725 RPM, 115/230V TENV enclosure, ball bearing, split phase, automatic thermal protection, rigid mounting base.



36", with 1/2 H.P. Galvanized  
Reg. \$329.00 \$219.99  
48" With 1 H.P.  
Reg. \$479.00 \$369.99



Also: Full Line Of All-Aluminum Shutters Available Starting At \$29.99

CERTIFIED CFM LICENSED BY AMCA (*)									
0 0"	0 05"	0 10"	0 125"	0 15"	0 20"	0 25"	FAN RPM	MAX. FAN BHP (†)	SHPG. WT
11,300	10,750	10,200	9900	9500	8750	7750	510	0.63	108.0

★ FULL LINE PARTS DEPARTMENT ★ WE SELL, SERVICE & INSTALL ★

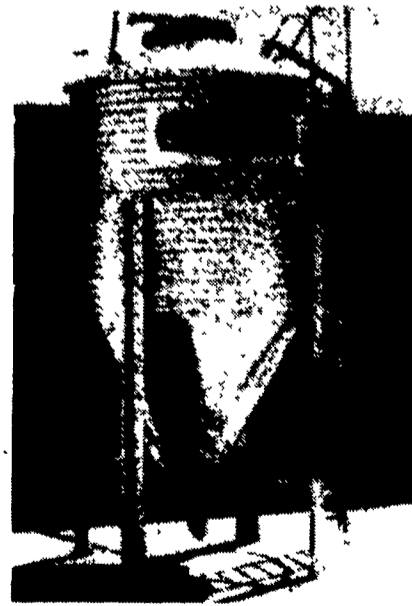
## EMHERR EQUIPMENT, INC.

5 Mi. South Of Lancaster On Rte. 272  
14 Herrville Rd., Willow Street, PA 17584  
Phone 717-464-3321 or Toll Free: 800-732-0053

7-21

## BINS & AUGERS

### CHORE-TIME AND FLEX AUGER FEED BINS Your Best Buy



The feed bin is the very heart of any feeding system. If the bin lets you down, the system quits.

That's why we put so many quality features into our complete line of feed bins - which includes 6-foot diameter steel or polyethylene (great for H.M. corn), 6-foot, 7-foot, and 9-foot models. All are available in several capacities - so you have a wide selection of bins to fit your needs.

Here are just a few of the quality features that make our bins such an outstanding buy:

- Sturdy Ladder System
- All Bin Seams Are Double Caulked
- Choice of 16 or 25 Inch Hopper Opening
- All Galvanized Steel Parts

We Stock Truckloads Of Chore-Time Bins & Miles Of Chore-Time FLEX-AUGER

**NEW! TOLL FREE CUSTOMER SERVICE NUMBER: 1-800-673-2580**

Authorized **CHORE-TIME** Master Distributor

**Northeast agri systems**

**NORTHEAST AGRICULTURAL SYSTEMS, INC.**  
FLYWAY BUSINESS PARK  
139 A West Airport Rd  
Lutz, PA 17543  
(717) 569-2702



STORE HOURS  
Mon-Fri 7:30-4:30  
OPEN SATURDAY  
BY APPOINTMENT