

Public Auction Register

Closing Date Monday 5:00 P.M.
of each week's publication

THURS. AUG. 23 - 7PM,
Farmhouse with 4 Acres,
located from Morgantown
take Rt. 10N approx. 1.5
mi., right onto Joanna Rd.,

PUBLIC AUCTION

**REAL ESTATE AND EQUIPMENT
POND VALLEY FARM — 63 ACRES
REMODELED PART LOG HOME, 2 BARN, 2 PONDS,
48X90 HEATED MORTON BLDG., POOL,
FENCED PASTURES, CAN SUBDIVIDE
JD 4020 DIESEL TRACTORS, CASE 1194 TRACTOR
W/LOADER, JD 330 ROUND BALER,
HEAVY EQUIPMENT, TRUCK, TRAILERS,
GRIZZLY WOODWORKING EQUIPMENT,
12 HEAD SCOTCH HIGHLAND CATTLE**

SATURDAY, JULY 28, 1990

AT 9:00 A.M.

AT

5621 LONG CORNER ROAD
WHITE HALL, HARFORD COUNTY, MD 21161

Directions: I-83 to MD Exit 36, RT 439, toward Bel Air, L. on Bond Rd. to W. Liberty to Lieb Rd., R. on Long Corner to Farm. From MD RT 23, at Norrisville, take Church Lane to Duncan Rd. to Long Corner Rd. to farm. Signs Posted.



REAL ESTATE: Outstanding Opportunity to Purchase a Rustic Country 63 Acre Estate w/2 Barns, 2 Stocked Ponds, Fenced Pastures, 48X90 Heated Morton Bldg. w/Concrete Pads, Inground Pool, Can Be Subdivided. Maintenance-Free Country Home w/Exposed Log Walls & Beams and Designed for Easy Country Living. Farm has Good Road Frontage. Can be Viewed by Appt. w/Auctioneer or at:

**OPEN HOUSE FOR REAL ESTATE ONLY
SUNDAY, JULY 22, 1990 1-4 PM**

REAL ESTATE TERMS: \$15,000 Due and Payable in Cash or Guaranteed Funds on Day of Sale. Balance of 10% of Purchase Price due within 15 Banking Days from Day of Sale. Balance Due at Settlement within 60 Days. Property Sold "AS IS." Brochure and Addtl. Terms available from Auction Office. Not Responsible for Accidents on Premises.

PERSONAL PROPERTY: JD 72 4020 DIESEL TRACTOR, Side Console Power Shift, Good Rubber, 3099 hrs., Like New, JD 67 4020 DIESEL TRACTOR, Syncro-Range Shift, Dual Outlets, 4700 Hrs., Like New, Case 1194 Tractor w/ Hyd. 54L Loader & Bucket, 435 Hrs., Like New, JD 330 Round Baler, Nearly New, JD 1209 Haybine w/new Sickle Bar, JD 5' Rototiller 3PT, INTL 35 Hyd. Rake, INTL 78 LOADSTAR 1700 w/19' Dump, Diam. Plated Steel Body & Elec. Lift Gate, New ATHENS 10' Cut-A-Way Disc 3PT, Myers Power-Angle Snow Blade, Cyclone Seeder 3PT, 15' Batwing Rotary Mower, KOHLER 3000 3KW Generator, DANUSER F-8 Post Hole Digger w/12" & 6" Augers & Hyd. Down Pressure, Stone 6CM 8HP B/S Engine Drum Mixer, Grizzly 20" Planer 3HP, Grizzly Router 3HP, Grizzly 10" Table Saw 3HP, Grizzly Super HD Jointer 8"x65", Shamrock CP100 HD Industrial Press, 3" Gorman-Rupp Centrifugal Pump Wisconsin Engine, B/D 1/2" Heavy Duty Drill, AMROX BS450 Metal Cutting Bandsaw, YAMAHA GAS GOLF CART, Heavy Duty Vice, Homemade Speed & Power Cylinder Log Splitter, Gas Tanks, 40' Steel Sea Container, 35' Alum. Sea Container, Rockwell 277 Saber Saw, Rockwell Angle Drill, 84 Ford Pickup Bed Like New, New 20" Truck Chains, New Case Tractor Chains, Ridgid 5' and 36 Pipe Wrenches, New Hyd. Hoses, Acetylene Hoses and Others, 74 Transfer Case for 4x4 F250 Rebuilt, 20' Alum. Ext. Ladder, MANY Other Small Items. EUCLID Bottom Dump Pan, BUFFALO SPRINGFIELD 3-WHEEL ROLLER w/new Hyd. 10 Ton Pump-V Blades, 4-Axle 9 Ton Trailer w/Hyd. Ramps, 4'x5' Steel Boxes, INTL 3820 30" Bucket, INTL 3820 16" Bucket, Set of 4' Heavy Duty Forks, DICO Block/Pallet 6-Prong Forks 42x48, 5th WHEEL DOLLY TRAILER w/Tandem Wheels, Racks for Trailer, Complete Valve Bank Body for JD 690B Excavator, Chain for 450 Dozer, 40' FRUEHAUF TRAILER, Galvanized Steel I Beams, 6" I Beams, 29' I Beams. SCOTCH HIGHLAND CATTLE: 5 Cows Ready to Calf, 1 Cow & Calf, 1 Mature Bull, 2 Feeder Bulls, 2 Heifers.

AUCTIONEER NOTE: The Real Estate Offering and Equipment have been maintained in very good condition by Mr. and Mrs. Thomas. This is a Tremendous Opportunity to Purchase Real Estate and Like-New Equipment at Auction!

— TERMS —

Cash or Approved Check. Must have Bank Letter of Credit for Large Purchases by Check if not known by Auctioneer. Food Served. Farm Equipment at 11:30, Real Estate at 12 noon, Cattle after Real Estate.

**J. DONALD & DEBRA THOMAS
Owners**

ISENNOCK AUCTION SERVICES, INC.
ROBERT L. ISENNOCK, SR., AUCTIONEERS
WHITE HALL, MD 21161
(301) 557-8052

go .2 mi. to property on left,
Caernarvon Twp., Berks
Co., Daniel & Deborah
McCalicher, owners, Horn-
ing Farm Agency, Aucts

FRI. AUG. 24 - State
Graded Feeder Pig Sale,
Exit 12 East off I-81, Carl-
isle Livestock Market,
717-249-4511.

FRI. AUG 24 - 5PM and
SAT AUG 25 - 9AM,
Tools, Tractor, Riding
Mower, Cider Press, Anti-
ques, Collectibles, Coins,
Guns, Furniture, located
Bethel, PA, Berks Co.,
Charles E. Kline, owner,
Dwight D. Miller, Auct.

SAT. AUG 25, 5 Acres
Zoned Commercial 1, HH
Goods, Car, located 158 N
Rt 272, Stevens, PA, Luke
V. Coldren Est., Paul E.
Martin and John D. Stauff-
er, Aucts

SAT AUG 25 - 9AM,
Estate Auction, Deep

Creek Valley Farm. 3 Miles
Northeast of Hegins, along
Hill Road in Hegins Town-
ship, Schuylkill County, Pa
From I-81 Exit 34 Take Rt
25 to Hegins, at Hegins
take Rt 125 North to 1st
Road, Turn Right On East
Mt. Road & Go To Top Of
"Little Mountain" take Val-
ley Road Straight Through
To Hill Road T-881 In Deep
Creek Valley Estate of
Percy J. Deeter Mike &
George Deibert,
Auctioneers

SAT. AUG. 25 - 9AM, RE,
Antiques, Collectibles, HH
Items, Coins, etc., located
Elizabethville, PA, 1/2 mi. N
of Upper Dauphin Area
High School, Laura M.
Snyder, owner, Lee D.
Dockey, Auct.

SAT AUG 25 - 9.30AM,
RE 12:30PM, RE, HH
Goods, Tools; Guns, Anti-
ques, Silver Coins, Quilt,
Grandfather Clock, Stor-
age Shed, located in Upper

Lancaster Farming Saturday, July 21, 1990-D35

Leacock Twp., Lanc. Co.,
PA along Rt. 772, 2 mi. S.
of Rt. 23, 3 mi. N. of Inter-
course from Rt 340, Wil-
liam and Esther Chupp,
owners, Steve and Steve,
Jr. Petersheim, Aucts

SAT AUG 25 - 10AM,
Real Estate and Personal
Property, located corner of
Rt 10 and Church Rd,
Cochranville, PA, Estate of
Mabel S. Kauffman, Ken-
neth Griest and John Stolt-
zfus, Aucts

TUES AUG 28 - 6PM,
Guns of all descriptions
Diftenbach's New Holland
Auction Center, Ltd, 100
West Jackson St., New
Holland, Pa 17557 Diften-
bach's Auct

SEPTEMBER

SAT SEPT 1, 1st Annual
Fall Farm Machinery Con-
signement Auction, at Kling's

Scale Barn, Landisburg, Per-
ry Co., PA, Kling's Auctions,
Inc., Aucts

SAT SEPT 1, 82 Acre
Farm, located 336 Brethren
Church Rd., Leola, Lloyd K.
and Anna M. Huber, own-
ers, Paul E. Martin and
John D. Stauffer, Aucts

SAT SEPT 1 - 9AM, 300'
Frontage, 36'x60' Com-
mercial Building, Store &
Shop Inventory, Antiques &
Collectibles, located Vil-
lage of Erdman, along the
Erdman to Sacramento Rd
in Lykens Twp., Upper
Dauphin Co., PA, Est of
Luther E. Klinger, Mike and
Geo. Deibert, Aucts

SAT SEPT 1 - 10AM, RE,
Antiques, Collectibles, HH
Items, located Pine St in
the Borough of Berksburg,
PA, Est of Estella M. Stra-
whecker, Lee D. Dockey,
Auct



10th ANNUAL BENEFIT AUCTION HINKLETOWN MENNONITE SCHOOL

PUBLIC AUCTION

FRI., JULY 27 — SAT., JULY 28

Location: Take Rt. 322 E. from Ephrata to Hinkletown. In Hinkletown turn north on Wanner Rd. 1/4 mile to school on right. Watch for auction signs.

Fri., July 27
4 PM-?

**Pig Roast Dinner,
Ice Cream Sundae Bar
and Entertainment**
Items on display for
Sat. Auction



Sat., July 28

7:00 AM Pancake & Sausage Breakfast
8:00 AM Auction begins
10:30 AM Certificates & Crafts, Weed
Eaters, Porch Swing, Storage Shed
11:00 AM Chicken Barbecue
12:00 Noon Grandfather's Clock,
Regulator Clock, (2) 12" Octagonal 3D
Pictures, Half Size Sleigh
12:30 PM Zook 3D Picture
1:00 PM Quilts
2:00 PM Certificates
2:30 PM Winross Trucks

FARM AUCTION

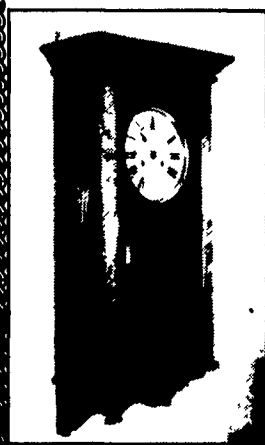
**28"x51" 3-DIMENSIONAL HANDCRAFTED PICTURE
BY ZOOK'S ART STUDIO (ABNER ZOOK)
TO BE SOLD APPROX. 12:30 PM**

25 PLUS QUILTS - CRAFTS

Double Wedding Ring; Love Birds; Log
Cabin; Philadelphia Pavement; Trip Around
The World; Rose Basket Applique; Triple
Irish Chain; Plus many more Beautiful
Quilts, Wall Hangings & Craft Items.

WINROSS TRUCKS APPROX. 70

Complete Weaver Set; Country Style,
Helping, Nobody, 50th, & 5 Star. Also Holly
Farms & Tyson, Keller Bros. set of three;
Gehman Feed; C. Curtis Huges Flowers;
Shady Maple (Signature); Denlinger Lum-
ber Trusses; Horst Supply Flatbed w/
Lumber; Good's Furniture; Rohrer Trans-
port; Mast Electric; Hoffman Seeds; Weaver
Bros.; Heritage Kitchens; Turkey Hill, Also
Lg. Collection of Ertyl Trucks.



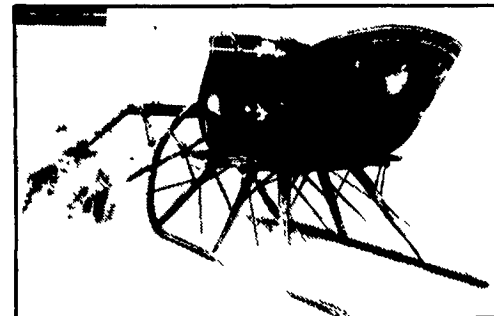
Full Size
Cherry
Grandfather's Clock

New Oak
Regulator Clock
(Wall Unit).

Both Clocks
Handcrafted By
John Weber.

NEW & MISC. ITEMS

Child's Rocker; Wooden Porch Swing;
New Standup Chair; Sofa & Chair; Carpet
Remnants; 6 New Toilets; 40' Concrete
Parking Curbs; 500 Patio Brick Concrete
Blocks; Silo Fill Pipe; Live Animal Traps &
Cages; 2 Ventomatic Attic Fans; Folding
Walker; Used Snow Tires; 4-15" 4WD
Wheels for Chev. Pickup; 2 Fire Exting-
uishers; Motor Oil; Automatic Service
Items; Tools; Household Items; Lawn &
Garden Items; Toy Truck; Toy Tractors;
Children's Toys; Fruit Baskets; Lots of Flow-
ers & Plants. Many Other Valuable Items.



Beautiful Half-Size Sleigh, Perfect for foyer, den,
lobby, office, etc. Handcrafted by Harlen Good.

(2) 12" OCTAGONAL 3#D PICTURES

By Aaron Zook — Horse Scene & Winter
Covered Bridge Scene, 23"x30" Water Col-
or Painting by H.M.S. art teacher Kathy
Kautz "Floral Scene."

NEW 8'x14' STORAGE SHED

New John Deere Weed Eater; New Pou-
lan Weed Eater.

CERTIFICATES

Many Restaurants, Bakery, Sight &
Sound, Weekend at Inner Harbor, Cabin at
Woodcrest for weekend; Firewood, Barn
Dri; Load Wood Shavings; A.I. Services to
Leadman & Prompt; Auto Service & Many
Others.

Note: A lot of nice items to be sold. All pro-
ceeds benefit Hinkletown Mennonite
School. Plan to spend the day with us. Lots
of good food, pies, ice cream, etc. Anyone
wishing to donate item contact Dave Zim-
merman at 717-354-8915.

Auction For Benefit Of
HINKLETOWN MENNONITE SCHOOL
717-354-6705 or 717-354-6069

Auctioneers:
Randal Kline, Lloyd Kreider
Elvin Selgrist, Paul Martin
Vernon Martin, AU2116-L



Kline & Kreider Auctioneers