

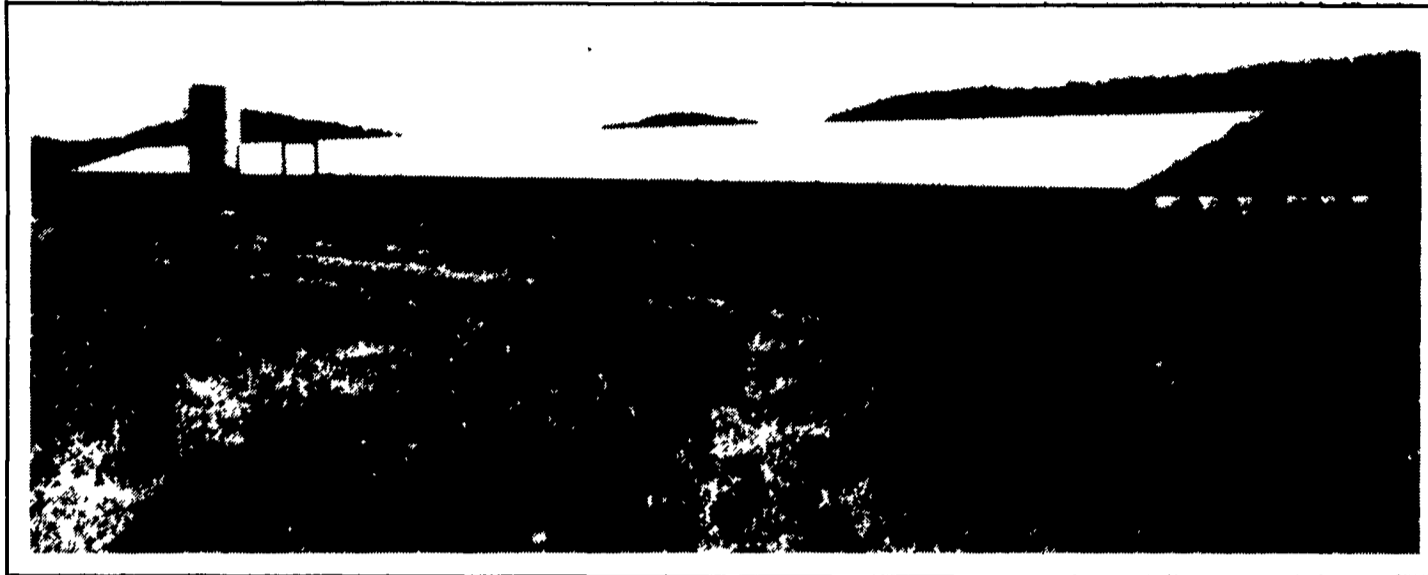
Dear Jim & Ann Curtis,

King Construction and Tri-County wish to "Thank You" for choosing our companies to construct your swine finishing unit and to wish you continued success with your new project.

Sincerely,

King Construction Co.

Tri-County Confinement Systems, Inc.



**2000  
Head  
Swine  
Finishing  
Unit**

**SPECIAL FEATURE:**

It's Another  **aerotech**<sup>®</sup>  
Engineered Tunnel Ventilation  
System With Computer Control



— Also Featuring —



**HOG SLAT**<sup>™</sup>

- Concrete Slats
- Stainless Steel Feeders
- Solid Steel Fencing
- McELROY Aluminum Roofing And Steel Siding
- RIGID-PLY Trusses
- TRI PLY Ceiling

**Swine Finishing Contracts Offer An Excellent Part-Time Income  
And Long Range Investment Opportunity - Call For Details!**



Designed and Equipped By

**TRI-COUNTY**

CONFINEMENT SYSTEMS INC.

608 E. Evergreen Rd., Lebanon, PA 17042

Ph: 717-274-3488

Hours: Mon.-Fri. 7:00 to 4:30 Sat. 8:00 to 12:00

Construction By

**KING CONSTRUCTION CO.**

601 Overly Grove Road  
New Holland, PA 17557

(717) 354-4740