

32 MISCELLANEOUS

4,000 lb pallet truck, runs good w/battery, \$800 215-965-6857

Bandsaw, Bandmill blades custom made, clipper sharpening Jerry's Saw Shop and Sharpening Service, Brockway Pa 1-800-992-7297

Bridgewood 12" table saw with or without hydraulic motor, Bridgewood 25" wide belt sander used w/ hydraulic, both in good condition Call 717-768-7726 between 5-6PM

1975 Ford 9000 Detroit 238 engine, 10 speed, Roadranger, 22' van box w/electric lift, very good condition, \$7 600 (814)623-2603

1978 F250 4x4 351 4SPD 8' Meyers power angle plow, fiberglass topper \$3,000 717/362-3593

1978 Ford LN7000, 3208 Cat diesel, 18' flatbed, 24,000 GVW, 95,000 mi., \$6,900/OBO 301-734-6892



1988 FREIGHTLINER

LTA 10 285 HP Cummins w/Jake, 8 Speed Deep Reduction, PS, AC, 18,000 Lb. Front, 44,000 Lb. Rears, Mich. Tires, 41,000 Miles, "Pro Steel" Vaccum Tank, 3,400 Gal. Cap. Truck Like New (717) 354-3199 (717) 354-9422

PRICE REDUCED!

11,000 GAL. PROPANE TANK FOR SALE!

(717) 933-4114

PAINTED STEEL ROOFING & SIDING

Galvanized/Galvalume • 29/26 Gauge • 3 Major Brands Available • Large Stock Trim & Sheet **AS LOW AS \$32⁰⁰ per/sq.** Conestoga Building Supply New Holland, PA 17557 717-354-2613 or 1-800-544-9464



(1) 1980 Chevy Van Max. Gross Wt. 8,600, good for a construction van, no rust and runs good.

Fultz Bros., Inc. 717-438-3354

33 RECREATIONAL VEHICLES

1983 Grand Wagoneer Jeep, Limited Edition, inspected emission 4x4 new all-terrain tires, shocks, brakes, high mileage, engine excellent, no cancer, perfect condition, \$4,995 215-358-5914 Eve

WANTED Used gooseneck camper, any size 302/398-8754

34 AUTOS

1965 Plymouth Belveder 6 cyl auto 31,000MI \$1995 814-344-8447 Cambria Co

35 TRUCKS & TRAILERS

1971 International C04070 single axle truck tractor, 238DD, 10SP, excellent mechanical condition \$3350 negotiable Quarryville 717-786-3872

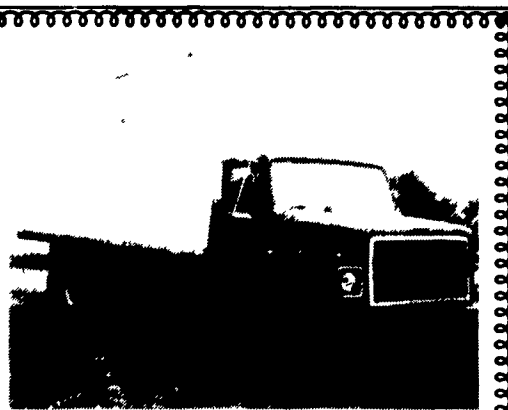
1972 INT 1310 w/ Schwartz rollback hyd winch & Ag tow bar, \$4,500 Erb & Henry Equip Co. Inc 215-367-2169

1973 Int COE 318 Detroit, 10 spd, PS, AC, 26' flatbed tri-axle, excellent condition, 73,280GVW, \$11,500 215-269-1221

1974 Diamond Reo tri-axle dump, 1673 Cat, air, 4x4 trans, 16' aluminum body, good tires, good condition Must Sell \$12,500 Chester Co 215-286-9284

1974 IH 2070A diesel silage dump truck new tires, brakes, inspected, \$9,000. Road Ready 215-358-5914 Eve

1977 Ford, cab & chassis, power steering, 9 000-20 tires, equipped w/PTO, 21,000 GVW Would take 16' body Asking \$850 Call Evenings 717-786-1119



1979 S1800 Int.

With 20 Ft. Van Body, 404 Gas, 5+2 Speed, PS, PB, 28,000 GVW \$4,500

609-466-9317

YES!! ENGLE FORD DOES MAKE IT EASIER!!

Over 100 New & Used Trucks, Vans & 4x4's

1988 Ford Aerostar Eddie Bauer Edition Auto, AC and more

1988 Isuzu Trooper II L.S. AC, 5 Speed
1987 Ford Bronco, V8, Auto, cruise control tilt wheel

86 Chevy Beauville Window Van, 5 passenger, 6 cyl, automatic, 16,000 mi

1988 GMC 1 ton dump, V8, 4 spd

1988 Ford 1 ton cargo van, 6 cyl, auto

87 Ford F350 Dump, Diesel, 4 speed

1989 Ford F350 DRW Crew Cab, Centurian Conversion

1988 Chevy Crew Cab, V8, Auto, AC

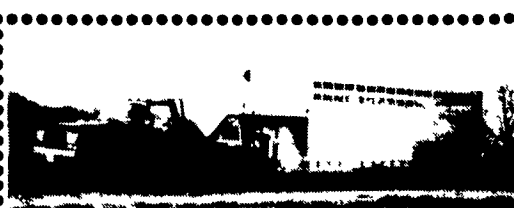
ENGLE FORD, INC.

Rt 147 North

Millersburg, PA 17061

In PA The Call's On Us 1-800-242-8075

Out of State Call 1-717-692-4841



1988 FORD F-350

4x4 - 460 - 5 speed, 20,000 Mi., Excellent Condition

1989 Eby Trailer

8x24 Ruffneck, Hydraulic Brakes, Excellent Condition

Call After 3 PM

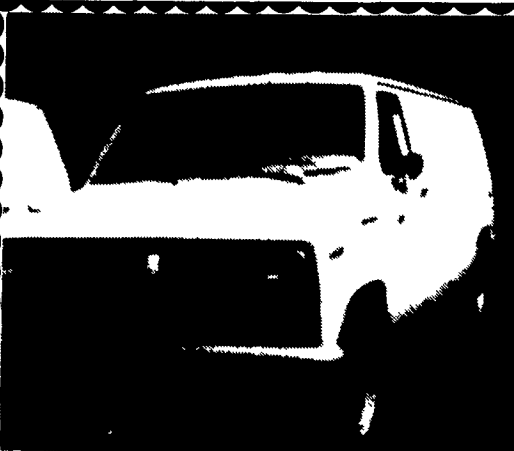
215-869-0559 Ask For Al



'88 Freightliner Sleeper

444 Cummins w/Jake, 13 Spd. Air Ride, 11x24.5 A/C, PS, 300 Gal. Fuel, 230" W.B., 233,000 Miles

717-354-3199



(1) 1983 Ford Van Max gross Wt. 9,500, good for a construction van, no rust and runs good.

Fultz Bros., Inc. 717-438-3354



2 1/2 Ft. Fruehauf Dump Trailer

Fair condition \$3,500

Curry Supply Curryville, Pa.

1-800-345-2829

JONES The GMC GIANT of Lancaster County

1335 Manheim Pike, Lancaster, PA (717) 394-0711



'85 FORD F-150 4x4

AC, Cap, 5 Spd., #5421P

Was \$7,995

NOW \$6,695



'85 GMC SIERRA CLASSIC

V8, AT, Very Clean #5411P

Was \$9,995

NOW \$8,495



'86 GMC SAFARI VAN

Loaded, SLE, Only 45,000

Mi., #5412P

Was \$10,995

NOW \$9,995



'88 GMC CREWCAB

V6, AT, 28,000 Mi., #5413

Was \$12,995

NOW \$11,395



'85 FORD CONVERSION VAN

V8, AT, 60,000 Mi. #5407

Was \$5,995

NOW \$4,195

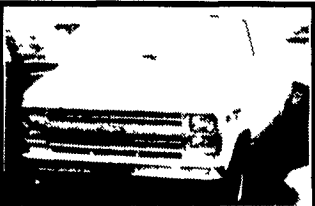


'87 FORD BRONCO II

V6, 5 Spd, AC, XLT #5418P

Was \$9,995

NOW \$8,795

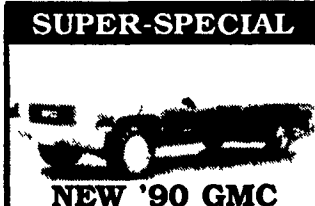


'88 CHEVY VAN

AT, V8, AC #5384

Was \$9,995

NOW \$8,995

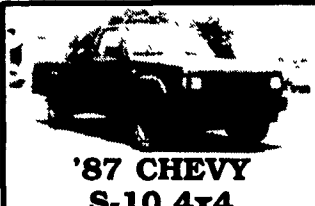


NEW '90 GMC CREW CAB

V8, AT #9093

Was \$18,259

NOW \$15,995*



'87 CHEVY S-10 4x4

V6, Auto, Air, Loaded #5367

Was \$9,995

NOW \$8,900

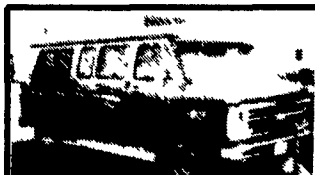


'84 CHEVY S-10 PICKUP

5 Spd., V6, #5404

Was \$5,495

NOW \$3,995

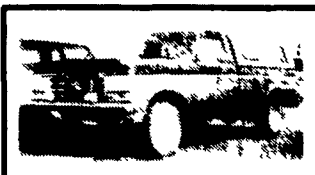


'88 CHEVY CONVERSION VAN

Wedge Conversion, Loaded! #5401

Was \$16,995

NOW \$15,495



'88 FORD F-150 4x4 XL

5 Spd, 6 Cyl., #5398

Was \$10,995

NOW \$9,795

* Includes Rebates