

Phila. Potato & Onion

July 11, 1990

PARTLY CLOUDY 73-89.
ONIONS-DRY YELLOW JUMBO
HIGHER, OTHERS ABOUT STEADY
50-lb sacks US#1 or generally good quality
new crop Yellow unless otherwise
stated CA Grano type jumbo 950-1000
mos 950 ord cond 400-500 Repacker sz
9-950 mos 900 ord cond 400-500 NM
Grano type White jumbo 13 00 25-lb Red
jumbo 800-900 WA 50-lb ctn Walla Walla
Sweet fair cond 800.

POTATOES ID RUSSETS HIGHER,
OTHERS ABOUT STEADY 50-lb sacks
US#1 size A washed or brushed unless
otherwise stated ROUND WHITES new
crop NC 550-600 fair qual & cond loas
500 large 8-850 mos 800 VA 6-650 DE
600 lge 8-850 10-lb loose 150 NJ one label
600 sz B 300 ROUND REDS new crop NC
11.00 sz B 13.00 50-lb ctn TX 13.00 CA
fair qual 850-900 RUSSETS 50-lb ctn
count unless otherwise stated ID 70-80s
20.00-21.00 90s 19.00-20.00 100s 18.00-
19.00 CA Norkotahs 70-80s 17.00-18.00
mos 18.00 90s 16.00-17.00 100s
15.00-16.00 CANADA CD#1 Prince
Edward Isle 80s 15.50 90s 14.50 100s
13.50.

Shippensburg Produce Auction

(717) 530-1700

Shippensburg, PA

Average Prices Of #1 Produce

July 5, 7 and 10. Open 11 a.m. Sat., Tues.
and Thurs.

Report Supplied by Auction

SUMMER APPLES: 4.25-6.50 1/2 BU
GREEN BEANS: 5.00-10.50 1/2 BU.
YELLOW BEANS: 6.00-10.00 1/2 BU
BLUEBERRIES: 16.00-22.00 12 PT
FLAT.
CABBAGE 4.00-4.50 CRATE.
CANTALOPES: 58-1.00 EACH
SOUR CHERRIES 7.50-10.50 8 QT
FLAT.
CUCUMBERS: 4.00-8.00 1/2 BU
PEACHES: 7.50-10.25 1/2 BU.
HULL PEAS: 6.00-11.00 1/2 BU.
SUGAR PEAS: 10.00-19.00 1/2 BU.
PICKLES: 5.50-12.00 1/2 BU.
POTATOES: 6.00-7.00 1/2 BU.
155-180 10 LBS., 1.25-1.25 5 LBS.
RED BEETS: 4.75-8.50 15 CT. BU.
RED RASPBERRIES: 18.00-31.00 12 PT.
FLAT.
BLACK RASPBERRIES: 20.00-33.00
12 PT. FLAT.
SWEET CORN: .75-1.80 DOZ.

SUMMER SQUASH: 1.50-4.00 1/2 BU.
TOMATOES: 13.00-17.50 25 LB. BOX.
WATERMELONS: 15-30 LBS.
1.75-3.55 EACH.
ZUCCHINI: 2.00-6.00 1/2 BU.

Oklahoma City Feeder Cattle

July 11, 1990

COMPARED WITH LAST WEEK:
FEEDER STEERS OVER 600 LB
CLOSED 1.00-1.50 HIGHER. FEEDER
HEIFERS OVER 550 LB. 1.00 LOWER
STEER & HEIFER CALVES 2.00-5.00
HIGHER. DEMAND GOOD FOR ALL
FEEDER CATTLE. HOT DRY WEATHER
HAS FEEDERS IN MODERATELY
THIN THRU AVERAGE FLESH CON-
DITION MAKING THEM ATTRAC-
TIVE TO BUYERS. CALF DEMAND
IMPROVED FROM PRE-HOLIDAY
SALES OF LAST WEEK. INCREASED
INTEREST FROM NORTHERN
STATES WAS A LARGE HELP. OVER-
ALL QUALITY OF RUNS TYPICAL OF
THIS TIME OF YEAR AND RAN THE
GAMUT OF POOR TO ATTRACTIVE.
SLAUGHTER COWS 50-1.00 HIGHER.
SLAUGHTER BULLS STEADY TO 2.00
HIGHER. INCREASED SHOWING OF

Lancaster Farming, Saturday, July 14, 1990-A17

Estimated Daily Livestock Slaughter

Under Federal Inspection

July 11, 1990

	CATTLE	CALVES	HOGS	*SHEEP*
WED., 07/11/90 (EST)	127,000	6,000	288,000	20,000
WEEK AGO (EST)	1,000	0,000	5,000	0,000
YEAR AGO (ACT)	129,000	9,000	311,000	21,000
WEEK TO DATE (EST)	368,000	17,000	839,000	59,000
SAME PD LT WK (EST)	240,000	8,000	546,000	39,000
SAME PD LT YR (ACT)	379,000	25,000	904,000	58,000

COWS & BULLS WITH 910 HEAD FOR
THE WEEK. RECEIPTS THIS WEEK
11,200; LAST WEEK 7,076; LAST
YEAR 9,383. RUN INCLUDED 70%
YEARLINGS; 22% CALVES & LIGHT
STOCKERS; 8% COWS & BULLS.
BULK RANGES FOR THE WEEK
FOLLOW:

FEEDER STEERS: MEDIUM &
LARGE FRAME 1, 325-375 LB.
115.00-123.00; 400-450 LB.
99.50-112.50; 450-500 LB. 99.00-106.00;
500-600 LB. 95.00-103.00; 600-650 LB.
91.25-95.75; 650-700 LB. 87.75-92.50;
700-800 LB. 87.00-92.00; 800-875 LB.
84.75-87.75; 900-950 LB. 81.50-83.50.
LARGE FRAME 2 HOLSTEINS, 400-450
LB. 85.00-91.50; 525-550 LB.
79.75-81.00; 600-700 LB. 76.75-79.00;
725-800 LB. 73.00-74.50, 875-900 LB.
69.75-71.75.

FEEDER HEIFERS: MEDIUM &
LARGE FRAME 1, 200-300 LB.
101.00-117.00; 300-400 LB.
93.00-101.00; 400-500 LB. 87.00-94.00;
500-600 LB. 88.00-92.50; 600-700 LB.
85.00-90.75; 700-800 LB. 82.00-87.00.

SLAUGHTER COWS: CUTTER,
BONING & BREAKING UTILITY 1-4
AVERAGE DRESSING 52.75-55.75, HI
DRESSING 55.25-57.50, VERY HI
DRESS 58.75-59.25, LO DRESSING
48.75-52.50. CANNER 47.50-49.25.

SLAUGHTER BULLS: Y.G. 1,
1400-2000 LB. AVERAGE DRESSING
63.00-66.00, HIGH DRESSING
65.25-69.00, HI DRESSING & HI BON-
ING 69.00-72.75.

Peoria Sheep

Peoria, IL

July 10, 1990

SHEEP: 150 TRADING MODERATE.
COMPARED WITH LAST TUESDAY
SLAUGHTER LAMBS MOSTLY 200
HIGHER

SLAUGHTER LAMBS: CHOICE
AND PRIME 105-115 LBS. 51.00-52.00,
90-100 LBS. 47.00-48.

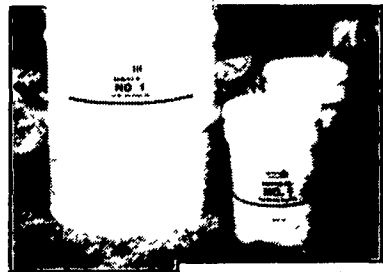
C.B. HOOBER & SON, INC.
Intercourse, PA
(717) 768-8231

HOOBER

HOOBER EQUIPMENT, INC.
Middletown, DE
(302) 378-9555

TWO LOCATIONS The Saving Place

For Superior Performance And Protection,
You Can't Get Better
Than No. 1



\$2-\$25 REBATE

SAE 30	5-Quart	55-Quart
Everyday low price	24.69	249.95
Less rebate	2.00	25.00
Net cost after rebate	22.69	224.95
SAE 15W-40	5-Quart	55-Quart
Everyday low price	24.99	251.95
Less rebate	2.00	25.00
Net cost after rebate	22.99	226.95
SAE 10W-20	5-Quart	55-Quart
Everyday low price	26.79	256.95
Less rebate	2.00	25.00
Net cost after rebate	24.79	231.95

Limit 4 in any combination

Parts Payback

1 High quality base stocks—with a visco-
sity index ranging from 110-150. A
rating above 95 indicates a quality
base stock.

2 Low content of 15%—An important
anti-wear additive—most competitive
products run only 10-13.

3 Total Base Number (TBN) of 12-15. The
higher the rating, the better the capa-
bility to neutralize acid. Competitive oils
are rated as low as 6.

4 Sulfated ash content of 1.5%—that's
50% more of this important diesel en-
gine additive than typical competitive oils.

And with Case IH No. 1
you'll get the diesel engine
oil that's A P1 C E rated—
so you know it will give
you optimum performance
in your hardworking farm
machinery. Check out
the way No. 1 Oil works
for you.

Take advantage of these big
rebate savings and get the No. 1
advantage—the oil that pro-
vides premium performance
and protection for your diesel
engines.

LUBRICANTS for the 90's

WE SHIP PARTS DAILY Via UPS-PPSH-BUS-AIR FREIGHT, ETC

HOURS

Mon.-Fri. 7 AM-5 PM; Sat.: 7 AM-Noon

CALL US...

It Could Be We Have It

case ih

Authorized
UPS Station

YOU STAY PUT

Pick Up Your
Phone And
Place Your
Parts
Order
With
Us

Erth-Rite Inc. Presents An

OPEN HOUSE

Friday, July 20, 1990 * 9 AM to 4 PM
Saturday, July 21, 1990 * 9 AM to 12 NOON

Seminars will feature the following speakers:

Dr. Harold Willis - Noted Author, Speaker
(authority on corn, alfalfa, soybeans, etc.)

Per Ohrstrom - Maxicrop USA

Dr. T.L. Senn - Clemson College, SC

Wally Tharp - Universal Diatoms

D.E. (Diatomaceous Earth)

Environmental Safe Insect Control

DOOR
PRIZES!

ERTH-RITE, INC.
(Formerly Zook & Ranck, Inc.)

R.D. #1, Gap, Pennsylvania 17527

To receive your free lunch ticket,
call 442-4171 or 800-332-4171 by July 16, 1990

From field to feedlot, Unverferth moves material



Unverferth grain box augers put material where you need it - fast.

Loading, Carrying or Unloading —
Grain, Seed, Feed or Fertilizer.

Whatever your handling chores involve,
trust Unverferth to help you do the job
faster and more efficiently.

With six models available, there's an
Unverferth grain box that's right for every
size operation. All deliver the most in
durability and rapid unloading.

Add a rugged Unverferth running gear,
and any grain box trails straight and
smooth. Capacities from 8 to 18 tons.

Then mount a hydraulically powered Unverferth grain box auger. Make
filling planters and feeders quick and easy.

Find out more about moving material efficiently.
See your Unverferth dealer today. Or contact us.

Unverferth Manufacturing Co., Inc.

P.O. Box 357, Kalida, OH 45853

1-800-322-6301 in the U.S. • 419-532-3121

FAX 419-532-2468 • Telex 265026



A rugged Unverferth running
gear will match the grain box
you choose.



Unverferth grain boxes feature
smooth sloping sides for fast
gravity flow unloading