

Estimated Daily Livestock Slaughter

Under Federal Inspection
July 3, 1990

	CATTLE	CALVES	HOGS	*SHEEP*
TUES., 07/03/90 (EST)	124,000	1,000	278,000	20,000
WEEK AGO (EST)	128,000	6,000	255,000	19,000
YEAR AGO (ACT)	1,000	1,000	1,000	2,000
WEEK TO DATE (EST)	239,000	8,000	541,000	39,000
SAME PD LT WK (EST)	247,000	13,000	482,000	37,000
SAME PD LT YR (ACT)	118,000	8,000	288,000	24,000

Central U.S. Carlot

Pork Report
July 3, 1990

Report supplied by USDA

CENTRAL U.S. CARLOT PORK REPORT FOB OMAHA BASIS INCLUDES MAJOR PRODUCTION AREAS IN MIDWEST AS OF 3 P.M. COMPARED MONDAY'S 3.00 P.M. CLOSE: FRESH PORK LOINS MOSTLY 2.50-9.50 HIGHER ON VERY TIGHT SUPPLIES; BOSTON BUTTS 3.00-5.00 HIGHER; SKND. HAMS STEADY TO 3.00 LOWER. SDLS. BELLIES 1.00 HIGHER. DEMAND GENERALLY GOOD. OFFERINGS LIGHT WITH MOVEMENT MODERATE.

34 LOADS PORK CUTS
11 LOADS TRIM PROCESS
PROCESS PORK, PORK CUTS
LOINS, REG., FRESH
14-18 LBS., 4.5 LOADS, PRICE RANGE 136.00-145.00, WGHTD. AVG. 140.00.

1/2" TRIM, 14-18 LBS., 4.5 LOADS, RANGE 153.00-162.00, WGHTD. AVG. 156.56.
18-22 LBS., 2 LOADS, RANGE 132.50-135.00, WGHTD. AVG. 134.00.
1/4" TRIM, 18-22 LBS., 2 LOADS, RANGE 150.50-152.00, WGHTD. AVG. 151.50.

LOIN, BLS. CTRCT.
5-7 LBS., 1 LOAD, RANGE 273.00, WGHTD. AVG. 273.00.
BNLS SIRLOIN
.75-1 LB., RANGE 215.00, WGHTD. AVG. 215.00 D.

TENDERLOIN, MUSCLE-OFF
RANGE 365.00, WGHTD. AVG. 365.00 D.

BOSTON BUTT
4-8 LBS., 1.5 LOADS, RANGE 110.00-110.50, WGHTD. AVG. 110.33.
1/2" TRIM 4-8 LBS., 1.5 LOADS, RANGE 126.50-127.50, WGHTD. AVG. 127.00.

COMBOS 8/UP LBS., RANGE 90.00,
WGHTD. AVG. 90.00 C.
SPARERIB, FRESH
1.5-3.5 LBS., RANGE 122.00-129.00, WGHTD. AVG. 122.78 A.

SPARERIB, FROZEN
3.5-5.5 LBS., RANGE 112.00, WGHTD. AVG. 112.00 A.
LOIN BACKRIB (BOXED)
FRSH/FRZN
1.75 /DN LBS., RANGE 282.00, WGHTD. AVG. 282.00 E.
1.75-2.25 LBS., RANGE 240.50, WGHTD. AVG. 240.50 E.

HAM, SKINNED, FRESH
14-17 LBS., UNQUOTED.
17-20 LBS., 2 LOADS, RANGE 85.00-88.50, WGHTD. AVG. 86.75.
20-26 LBS., 10 LOADS, RANGE 86.00-90.00, WGHTD. AVG. 88.40
26-32 LBS., 1 LOAD, RANGE 78.00, WGHTD. AVG. 78.00.
32/UP LBS., 1 LOAD, RANGE 79.00, WGHTD. AVG. 79.00.

BELLY, SDLS
SKIN-ON, FRESH
10-12 LBS., 1 LOAD, RANGE 58.00, WGHTD. AVG. 58.00
12-14 LBS., 3 LOADS, RANGE 60.0-61.00, WGHTD. AVG. 60.67.
14-16 LBS., 2.5 LOADS, RANGE 60.00-61.00, WGHTD. AVG. 60.80.

16-18 LBS., 4.5 LOADS, RANGE 57.50-58.50, WGHTD. AVG. 57.72.
18-20 LBS., RANGE 50.00, WGHTD. AVG. 50.00 D.
20-25 LBS., RANGE 44.00, WGHTD. AG. 44.00 B.

PORK TRIMMINGS/
BONELESS PROCESSING PORK
(CHEMICAL LEAN)
COMBO 42% FRESH, 1 LOAD, RANGE 49.00, WGHTD. AVG. 49.00
BOXED 42% FROZEN, RANGE 55.00, WGHTD. AVG. 55.00 D.
COMBO 72% FRESH, 2 LOADS, RANGE 88.00-92.00, WGHTD. AVG. 90.00.
BOXED 72% FROZEN, RANGE 98.00, WGHTD. AVG. 98.00 A.

BONELESS PICNIC MEAT
COMBO 72% FRESH, 8 LOADS, RANGE 92.00-95.00, WGHTD. AVG. 92.75.

SKINNED JOWLS
BOXED FROZEN, RANGE 53.00-54.00, WGHTD. AVG. 53.80 E.
NOTE! (*) REFLECTS 1/4" TRIMMED
PRODUCT BROUGHT BACK TO A REGULAR COMMODITY BASIS.
ABCDE AFTER QUOTES REPRESENTS DAYS SINCE LAST ACTUAL MARKET TEST. QUOTES ARE DROPPED AFTER 5 DAYS OF NO TEST OR BEFORE IF THEY NO LONGER REFLECT CURRENT MARKET CONDITIONS.

PORK CARCASS CUTOFF
TUES., JULY 3, 1990
ESTIMATED GROSS CUTOFF VALUES OF A 175 LB. HOG CARCASS BASED ON USDA CUTTING YIELD TESTS AND CARLOT PRICES. TUESDAY'S CARCASS GRADES AND PRICES PER CWT.:
US#1 85.91, CHANGE FROM MONDAY'S VALUE 1.84; US#2 83.13,

CHANGE 1.77; US#3 80.35, CHANGE 1.70; US#4 77.57, CHANGE 1.63.

TODAY'S CALCULATIONS FOR US#2 175 LB. PORK CARCASS.

HAM, SKINNED, 14-20 LBS., 21.01% OF CARCASS, 86.00 FOB VALUE, CHANGE FROM MON. -1.00; LOINS, 1/4" TRIM, 14-22 LBS., 20.33% OF CARCASS, 156.50 FOB VALUE, CHANGE 7.50
BELLIES, SDLS. 12-14 LBS., 13.90% OF CARCASS, 60.50 FOB VALUE, CHANGE 1.50, SPARERIBS 3.5 DOWN LBS., 3.03% OF CARCASS, 123.00 FOB VALUE.

PICNICS 8-12 LBS., 10.31% OF CARCASS, 65.00 FOB VALUE, CHANGE -1.00; BUTTS, 1/4" TRIM 4-8 LBS., 7.25% OF CARCASS, 127.00 FOB VALUE, 5.00 CHANGE.

JOWL, 2.85% OF CARCASS, 46.00 FOB VALUE; NECKBONES, 1.52% OF CARCASS, 20.00 FOB VALUE; FEET 1.05% OR CARCASS, 16.00 FOB VALUE, -1.00 CHANGE FROM MON.

TAILS .22% OF CARCASS, 45.00 FOB VALUE; TRIM 72% 2.19% OF CARCASS, 91.00 FOB VALUE; LARD 10.85% OF CARCASS, 12.25 FOB VALUE.

TOTAL CARCASS 94.51%.

Leola Produce Auction

Leola, PA
July 3, 1990

Report Supplied by Auction

ASPARAGUS: .95-2.00 12 OZ. BUNCH.

BLUEBERRIES: 11.00-14.00 12 PT. FLAT

GREEN BEANS: 5.00-9.00 1 1/9 BU. YELLOW WAX BEANS: 5.00-10.00 1 1/9 BU.

BROCCOLI: 6.50-8.00 12-14 CT. CAULIFLOWER: .40-.68 HEAD.

CHERRIES, PIE: 7.00-8.00 8 QT. FLAT.

CABBAGE: .20-.39 HEAD, 2.50-3.75 CRATE.

CUCUMBERS: 7.00-10.00 1 1/9 BU. KOHLRABI: 5.00-7.00 12 CT. BUNCH.

SPRING ONIONS: 9.00-12.50 40 CT. BUNCH.

PICKLES: 6.00-9.00 1/2 BU. POTATOES, NEW: 4.00-6.00 1/2 BU. SMALL; 50 LBS. US#1 6.00-11.00.

PEAS, HULL: 6.50-10.50 1 1/9 BU. PEAS, SUGAR: 9.00-12.00 10 LBS. PEACHES: 6.25 1/2 BU.

RED BEETS: 2.50-5.00 15 CT. BUNCH; 5.00-7.50 LOOSE 1 1/9 BU. RASPBERRIES, RED: 18.00-24.00 12 PT. FLAT; BLACK 12.00-16.50 12 PT. FLAT.

SWEET CORN: .75-1.75 DOZ. SPINACH: 9.00-13.00 1 1/9 BU. TOMATOES, 22.00-35.00 25 LBS SQUASH, PATTYPANS. 2.50-6.00 1/2

N.E. Weekly Shell Egg Report

Tuesday, July 3

Report Supplied by USDA

PRICES PAID PER DOZEN GRADE "A" BROWN EGGS IN CARTONS DELIVERED TO RETAIL STORES:

	EX. LARGE	LARGE	MEDIUM	SMALL
N. HAMP.	.95-.99	.86-.90	.72-.76	.41-.45
MOSTLY	.97-.98	.88-.89	.74-.75	.43-.44
RHODE ISLAND	.94-.98	.85-.89	.71-.75	.42-.46
MOSTLY	.94	.85	.71	.42
VERMONT	.98-1.09	.89-1.05	.75-.85	
MOSTLY	.98	.89	.75	

BU. SQUASH, YELLOW, SUMMER SQUASH: 1.75-3.50 1/2 BU.

ZUCCHINI, GREEN: 1.75-4.50 1/2 BU. ZUCCHINI, YELLOW: 1.50-4.00 1/2 BU.

SALE DAYS NEXT WEEK ARE MONDAY, TUESDAY, THURSDAY, FRIDAY, 10 A.M.

LAMBS: CHOICE 30-35 LBS. 85.00-120.00; GOOD, ALL WEIGHTS, 55.00-63.00; MEDIUM, ALL WEIGHTS, 48.00-54.00.

GOATS: BY THE HEAD, SMALL TO MEDIUM, 31.00-54.00 HEAD.

SALE EVERY TUES. EVE AT 5:30 FOR RABBITS, POULTRY AND EGGS; 7 P.M. FOR LIVESTOCK NEXT STATE GRADED FEEDER PIG SALE FRI., JULY 13, 1:30 P.M.

Carlisle Livestock Market

Carlisle, Pa.

Tuesday, July 3, 1990

SLAUGHTER STEERS: A FEW STANDARD 58.50-68.00

SLAUGHTER HOLSTEIN HEIFERS: 59.00-69.00.

SLAUGHTER COWS: STRONG DEMAND, EARLY BIRD PEN 4.00 HIGHER. BREAKING UTILITY AND COMMERCIAL 55.50-63.25; CUTTER AND BONING UTILITY 55.75-62.50; CANNER AND LOW CUTTER 50.00-55.00; BIG MIDDLE 49.50-54.50; SHELLY 49.00 AND DOWN.

SLAUGHTER FAT BULLS: YG#2 TO 66.25.

FEEDER STEERS: ALL WEIGHTS, MOSTLY HEAVIES MEDIUM #1 87.00-93.00; HOLSTEINS 62.50-74.00.

FEEDER HEIFERS: ALL WEIGHTS, 78.00-83.00.

FEEDER BULLS: ALL WEIGHTS, MEDIUM #1 85.00-94.00; MEDIUM #2 62.00-74.00.

VEAL CALVES: CHOICE 90.00-100.00; GOOD 84.00-89.00; STANDARD AND GOOD 74.00-83.00; LIGHT/WEAK 72.00 AND DOWN.

FARM BULLS: HOLSTEINS MOSTLY 120.00-156.00; FARM HOLSTEIN HEIFERS 120.00-204.00.

HOGS, BARROWS AND GILTS, 1.00 HIGHER. US#1-3 210-260 LBS. 60.50-63.00; 2 AND 4 59.75-60.25.

SOWS: OVER 450 LBS. 49.00-50.00; UNDER 450 LBS. 49.00-49.75; 2 AND 4 45.50-48.75.

BOARS: 47.75-53.25.

FEEDER PIGS: BY THE HEAD, 20-30 LBS. 26.00-38.00 HEAD.

SHOATS: BY THE POUND. 95-170 LBS. 45.00-58.00.

SHEEP: EWES, MOSTLY 15.00-18.00.

St. Louis Cattle, Hogs

Thursday, July 5, 1990

OPENING MID-SESSION WEEKLY CLOSE CATTLE AND CALVES 150 (0 SLTR, 150 FDRS) RECEIPTS CONSISTS OF FEEDER CATTLE AND COW FOR REGULAR THURSDAY AUCTION

SLAUGHTER CATTLE NOT TESTED SLAUGHTER CLASSES NOT TESTED COWS: CUTT, UTIL, COMM BULK SALES HI-DRESS % LO-DRESS % BREAKING 2-4 BONING 1-2 LOW TO AVG. CUTTER.

RECEIPTS THIS WEEK 500: WEEK AGO 1,000: YEAR AGO 700

FOR THE WEEK, SLAUGHTER STEERS AND HEIFERS 1.50-2.00 LOWER. COWS STEADY TO 1.00 HIGHER EARLY, LIGHTLY TESTED LATE, WITH A WEAK UNDERTONE. BULLS SCARCE.

SLAUGHTER SUPPLY MAINLY CHOICE AND SELECT AND CHOICE STEERS AND HEIFERS, AROUND 10% COWS.

Peoria Cattle

Peoria, Illinois

Monday, July 2, 1990

RECEIPTS THIS WEEK: 104 LAST WEEK: 90 LAST YEAR: 82.

COMPARED WITH LAST MONDAY COWS 2.00 TO 3.00 LOWER. FEW SALES OF BULLS 1.00 TO 2.00 LOWER. NOT ENOUGH FEEDER CATTLE FOR A MARKET TEST.

COWS: BREAKING UTILITY AND COMMERCIAL 2-4 50.00-55.50 CUTTER AND BONING UTILITY 1-2 52.50-56.00 FEW HIGH DRESSING 56.50-58.25 CANNER AND LOSW CUTTER 1-2 44.50-48.50.

C.B. HOOBER & SON, INC.
Intercourse, PA
(717) 768-8231

HOOBER

HOOBER EQUIPMENT, INC.
Middletown, DE
(302) 378-9555

TWO LOCATIONS
The Saving Place

Parts Payback

Seat for lawn and garden tractors Now is the time to replace that old seat with one that is as comfortable as it is durable. Made of strong vinyl that resists mildew and cracking. And patterned to stay dry with channels that prevent rainwater from collecting. Universal mounting.

Everyday low price 38.78
Less Rebate 4.00
Net cost after rebate Limit 1. **34.78**
\$4 REBATE

Heavy-Duty Jacks



8-ton Capacity

Everyday low price 29.20
Less rebate 4.00
Net cost after rebate **25.20**

20-ton Capacity

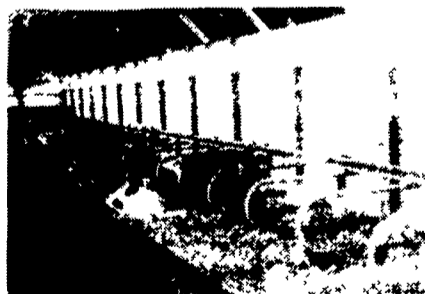
Everyday low price 61.10
Less rebate 4.00
Net cost after rebate **57.10**

Limit 1 jack



LOOP STALLS

All Loop Stalls Are Coated With Baked On Thermoset Epoxy Powder Coating After Fabrication



- Super Tough Finish
- Protection From Rust & Corrosion
- Superior Electrical Insulation
- Chip Resistant
- Resists Acid & Chemicals
- Smoother Finish
- Stays Cleaner

Zimmerman Loop Stalls Are Constructed of:

- 2 3/8" Outside Diameter High Yield Steel Tubing With A 12 Gal. (.108) Wall
- Spray Arc Transfer Method Used On Welds

PAUL B. ZIMMERMAN, INC.

Hardware • Farm Supplies
Custom Manufacturing
Crane Service

295 Woodcorner Rd.
Lititz, PA 17543
1 Mile West of Ephrata

Phone:
717-738-1121



WE SHIP PARTS DAILY Via UPS-PPSH-BUS-AIR FREIGHT, ETC.

HOURS

Mon.-Fri. 7 AM-5 PM; Sat. 7 AM-Noon

CALL US...

It Could Be We Have It



Authorized
UPS Station