

K.T. GRAHAM INC.

Transportation Equipment
P.O. Box 3, Rte. 272 South
Akron, PA 17501
Koith Graham - Phil Higgins

717-859-3168 717-859-1691



1981 KW Non-Sleeper

Cummins F300, 10 speed, 40,000 rears @ 3.55 Reyco suspension, AC and PS, 180" wheel base, 11R22.5 Radials, Alum. Disc F/A, Steel Disc R/A, 90,000 miles on o/haul.

\$12,700

ADDITIONAL EQUIPMENT

Straight Trucks

1985 Volvo F612 w/18' Morgan Dry Van
1987 Volvo FE613 w/26' Brown Dry Van

Tractors

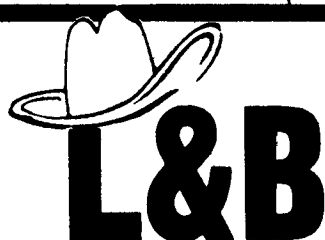
1981 White COE single axle, Detroit 6V92, RTO 12513, neway air suspension, dual 75 gal. alum. tanks

1985 Autocar w/60' sleeper, NTC 400, 13 speed, SQ-100 @ 3.90, Neway air suspension, jake brake, alum. wheels.

Trailers

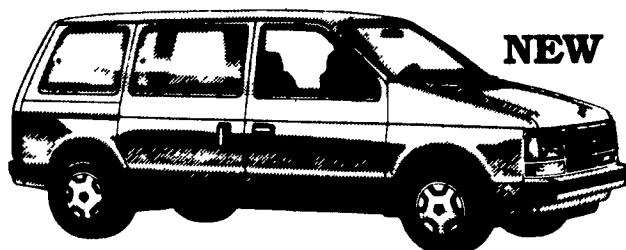
17 utility reefers, 48'x102"x13'6" SNWD-30 sentry 1500 approx. 5000 hours each.

Several Flatbeds 40', 42', 45' & 48'



INVENTORY BLOWOUT!

ALL 1990 GRAND CARAVAN'S AND GRAND VOYAGER'S AT DEALER COST



STOCK #90-494

SALE PRICE

\$17,799^{00*}

Price includes 4 Speed Automatic, 33 Ltr Engine, Sun screen Glass, Rear Window Defroster, Air Conditioning, Power Doors, AM/FM Stereo w/Cassette, Heavy Duty Suspension, Light Pkg, Tilt Steering, Speed Control, Forward Storage Console, Conventional Spare Tire, 7 Passenger Seating, Power RR Quarter Vent Windows



NEW

1990 IMPERIAL

50/50 Cloth/Leather Seats, 4 Speed Automatic, 33 Ltr Engine, Air Conditioning & More

YOUR PRICE \$23,383*

Stk #90 291



NEW

1990 DYNASTY

Cloth Bench Seats, 4 Speed Automatic, 33 Ltr Engine, Air Conditioning & More

YOUR PRICE \$14,207*

Stk #90-484



NEW

1990 SUNDANCE/SHADOWS

5 Speed Transmission, 25 Ltr SOHC Engine, Rear Defrost & More

YOUR PRICE \$9261**

Stk #90-452



NEW

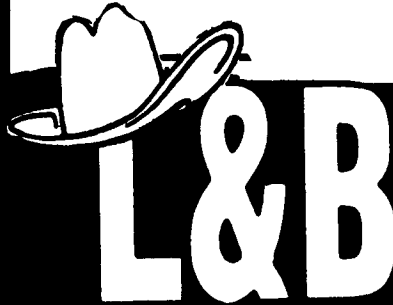
1990 ACCLAIM/SPIRITS

Super Discount Pkg 3 Speed Automatic, 25 Ltr Engine, Air Conditioning Tilt Steering, Cruise Control and More

YOUR PRICE \$11,670**

Stk #90-474

*Pa. Tax & License Extra. Price is good on in stock units only. Prices quoted are Straight Sale Discount Price Trades accepted at actual cash value - Limited Selection - Not all cars same Price but similar discounts will be given on similar vehicles
**Price Includes Rebate.



DODGE CHRYSLER PLYMOUTH

Route 422 W. ROBESONIA
678-3488
1-800-992-6275

HAMILTON GMC TRUCK



"A COMMITMENT TO EXCELLENCE"

Something A Little Different

Sales • Service • Parts (717) 665-2271

E. High St., 55 Doe Run Rd., Manheim, Pa. 17545



Lancaster County's **ONLY** Certified GM Medium Duty Dealer!

GMC NEW & USED LIGHT & MED. DUTY TRUCKS

It's Worth The Trip To Hamilton GMC!

CARGO VANS
4.3 Auto, #176 **\$12,999**

V8 AUTO.
Stock #9535 **\$15,499**

MEDIUM DUTY
C5
C6
C7
IN STOCK-READY FOR DELIVERY

V8 AUTO
Stock #9431 **\$12,499**

454 Auto A/C
Stock #193 **\$17,999**



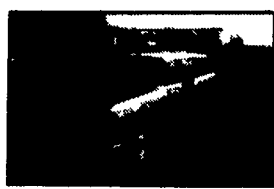
88 Chevy Astro, Choo Choo Conversion, V6, Auto, Air, AM-FM Cassette, 20,000 Miles, #9202B, Was \$14,995..... Now \$14,495



87 S10 Ext. Cab, 4x4, Tahoe, V6, Auto, PW, PL, Tilt, Cruise, AM-FM Cassette, 42,000 Miles #128A, Was \$9,995..... Now \$9,495



88 Chevy Suburban, 4x4 Silverado, Loaded, 30,000 Miles, #9458, Was \$18,495..... Now \$17,995



75 Int. Travelall, V8, Auto, AM-FM, PS, PB, Air, Tilt, Cruise, 82,000 Miles, Very Nice, #9674A, Was \$3,495... Now \$2,995



87 Dodge LE Van, 15 Pass, V8, Auto, PS, PB 1 owner, #121A, Was \$10,495 Now \$9,995



88 Dodge Ram Charger, LE, 4x4, Loaded, Local, 1 Owner, V8, Auto, 19,000 Miles, #101A, Was \$13,995..... Now \$12,995



86 Ford F150 XLT Lariat, 4x4, V8, Auto, Loaded, Local 1 Owner, #158A, Was \$10,495..... Now \$9,995



85 Chevy K10, 4x4, Silverado, V8, AM-FM Cassette, PS, PB, #9441A, Was \$9,495... Now \$8,995



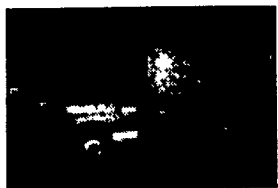
87 1/2 Ton High Sierra, 350 V8, Auto, 8600 GVW, PS, PB, #7107, Was \$9,995 Now \$9,495



84 Chevy K10, 4x4, Cheyenne, V8, 5 Speed, AC #9649A, Was \$11,995 Now \$9,995



87 Step Vans - Low Miles!, 4 Cyl. Cummins As Low As \$12,500



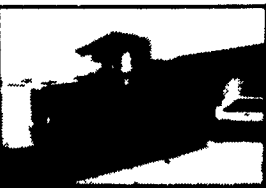
82-86 GMC C-70's, 366 & 5 Speeds 18 to 24' Bodies As Low As \$5,995



72 F600, 174" WB, 19,200 GVW, 4 Speed, 2 Speed Rear, 12 Ft. Grain Body Dump, #8219A, Was \$4,495..... Now \$3,995



88 Aerostar, PS, PB, Tilt, Cruise, AM/FM, 27,000 Miles, 1 Owner, 2.9 V6, #5051A, Was \$11,995..... Now \$11,495



78 Ford LN-8000 Dump, 3208 Cat, 31,000 GVW, #6122, Was \$21,900..... Now \$18,999