

Morrisons Cove Livestock

Martinsburg, Pa.
June 25, 1990

Report supplied by auction

CATTLE 129. STEERS. H. CHOICE & PRIME 74.50-76.75, CHOICE 70.00-73.50, GOOD 67.00-69.50, STANDARD 59.00-66.50.

HEIFERS: 70.00-73.50; GOOD 58.50-69.50.

COWS: UTILITY & COMMERCIAL 55.50-60.25; CUTTERS 51.50-54.50, CANNER & LOW CUTTER 44.50-51.25.

BULLOCKS: GOOD & CHOICE 65.50-72.00.

BULLS: YIELD GRADE NO. 1 63.50-72.00.

FEEDER CATTLE: STEERS 68.50-105.00, BULLS 64.50-88.50; HEIFERS 63.00-91.00.

CALVES 255. PRIME 108.00-116.50; CHOICE 101.00-106.50, GOOD 92.00-98.50, STANDARD & GOOD 80.00-91.50, 90-110 LBS. 82.00-98.50, 65-90 LBS. 73.00-92.50, HOLSTEIN BULLS 90-130 LBS. 122.50-181.00, HOLSTEIN HEIFERS 90-130 LBS 110.00-167.50

HOGS 91. US NO. 1-2 58.00-59.00, US NO. 1-3 55.50-57.50.

SOWS: US NO. 1-3 49.00-51.50.

BOARS 46.00-47.75

FEEDER PIGS 20. US NO 1-3 20-35 LBS 25.00-36.50 PER HEAD, NO. 1-3 35-50 LBS. 39.00-48.50 PER HEAD.

SHEEP 50. CHOICE 52.00-58.50; GOOD 45.00-51.00; SLAUGHTER EWES 18.00-35.00

GOATS 24.00-61.00 PER HEAD

HAY 8 LOADS, 36.00-86.00



Diffenbach's New Holland Auction Center, Ltd.
100 WEST JACKSON ST. • BOX 485 • NEW HOLLAND, PA. 17557
PHONE (717) 355-7253 (717) 393-4464 (717) 354-3297

You Can Buy

You Can Sell

HAY SALE EVERY MONDAY- 10:00 A.M.

1990 SPECIAL SALES

JUNE 1990	
S	M T W T F S
-	- - - - - 1
3	4 5 6 7 8 9
10	11 12 13 14 15 16
17	18 19 20 21 22 23
24	25 26 27 28 29 30

JULY 1990	
S	M T W T F S
1	2 3 4 5 6 7
8	9 10 11 12 13 14
15	16 17 18 19 20 21
22	23 24 25 26 27 28
29	30 31 - - - -

AUGUST 1990	
S	M T W T F S
-	- - 1 2 3 4
5	6 7 8 9 10 11
12	13 14 15 16 17 18
19	20 21 22 23 24 25
26	27 28 29 30 31 -

- SAT. JUNE 30..... 10:00 A.M. Bertha Shirk, Paradise. Real Estate, HH Goods & Antiques. (On the premises)
- FRI. JULY 13..... 9:00 A.M. Farm Equipment & Supplies
- TUES. & WED., JULY 24 & 25 9:00 A.M. Quilts, Crafts, & Buggies
- SAT. AUG. 11..... 9:00 A.M. Elizabeth L. Herr, 1347 Beaver Valley Pike Willow Street, Pa. RE, Antiques & HH Goods (On the premises)
- FRI. AUG. 17..... 9:00 A.M. Farm Equipment & Supplies
- TUES. AUG. 28..... 6:00 P.M. Guns of all descriptions
- TUES. SEPT. 4..... 6:00 P.M. Lawn Mowers & Garden Equipment
- FRI. SEPT. 14..... 9:00 A.M. Farm Equipment & Supplies
- TUES. SEPT. 25..... 6:00 P.M. Guns of all descriptions
- SAT. OCT. 6..... 9:00 A.M. Camp Deer Park Benefit Auction
- FRI. OCT. 12..... 9:00 A.M. Farm Equipment & Supplies
- TUES. & WED., OCT. 23 & 24 9:00 A.M. Quilts, Crafts, & Buggies
- FRI. NOV. 9..... 9:00 A.M. Farm Equipment & Supplies
- SAT. NOV. 24..... 9:00 A.M. Toys, Crafts, Gifts, & Tools

SEPTEMBER 1990	
S	M T W T F S
-	- - - - - 1
2	3 4 5 6 7 8
9	10 11 12 13 14 15
16	17 18 19 20 21 22
23	24 25 26 27 28 29
30	- - - - -

OCTOBER 1990	
S	M T W T F S
-	1 2 3 4 5 6
7	8 9 10 11 12 13
14	15 16 17 18 19 20
21	22 23 24 25 26 27
28	29 30 31 - - -

NOVEMBER 1990	
S	M T W T F S
-	- - - 1 2 3
4	5 6 7 8 9 10
11	12 13 14 15 16 17
18	19 20 21 22 23 24
25	26 27 28 29 30 -

DECEMBER 1990	
S	M T W T F S
-	- - - - - 1
2	3 4 5 6 7 8
9	10 11 12 13 14 15
16	17 18 19 20 21 22
23	24 25 26 27 28 29
30	31 - - - - -

Contact Us For Rates And Dates For Your Sales

ADD YOUR SALE TO THIS LISTING NOW!
Diffenbachs Aucts. 225L
Bonded Licensed Livestock Dealer and Order Buyer

Equipped And Ready To Serve You

SPECIAL HORSE SALE FRIDAY EVENING, JULY 6 - 7:00 P.M.

NEW HOLLAND SALES STABLES INC. THE ACTION AUCTION

FALL HEIFER SALE SATURDAY, SEPTEMBER 22

LIVESTOCK IS OUR ONLY BUSINESS

MONDAY

SLAUGHTER HOGS

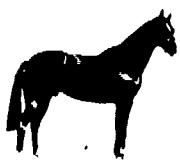


EARLY BIRD HOG SALE 7:30 A.M.

Sell Your Hogs At New Holland Sales Stables, Inc. See them weighed, sold and pickup your check.

10:00 AM

HORSES MULES



1:30 PM

BEEF SALE



SHEEP



CALVES

WEDNESDAY

DAIRY 11:00 AM COW SALE 12:00 NOON



We have the usual run of 50 to 100 Heifers, all ages. Loads of fresh cows and springers from our regular shippers. Also some local fresh cows and springers.

1:30 P.M.

FEEDER PIG SALE



Pigs are accepted after 6:30 A.M. State graded from 8 to 12 Dairy Barn and Feeder Pig Barn are cleaned and disinfected weekly for your protection.

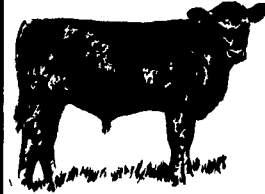
THURSDAY

Beef Auction 10:00 A.M.

BULLS STEERS BEEF COWS



STOCKERS & FEEDERS



1:30 P.M.

SHEEP GOATS CALVES



NEW HOLLAND SALES STABLES, INC.

12 Miles East of Lancaster Off Route 23, New Holland, Penna.

MANAGERS
Norman & David Kolb - 717-397-5538

Field Representatives
Luke Eberly - 215-267-6608 738-1865
Homer Eberly - 215-267-3047

Sale Barn Officer Manager
Roger Floyd - 717-354-4341

Order Buyer
Paul Good - 215-445-6662
Feeder Pig Representative
Mel Hoover - 717-354-8397