

**Shenandoah Valley Livestock**

Harrisonburg, Va.  
June 23, 1990

Report supplied by auction

STEERS: M&L-1 300-500 LBS. 94.00-105.00; 500-700 LBS. 85.00-97.50; 700-900 LBS. 76.00-77.50; HOLSTEINS 700-1000 LBS. 63.00-80.00.

S-L&M&L-2 500-700 LBS. 86.00-89.00; 700-1000 LBS. 74.00-75.00. FEEDER BULLS: M&L-1 300-500 LBS. 91.00-100.00; 500-700 LBS. 69.00-81.00; 700-800 LBS. 62.00-66.00.

S-L&M&L-2 300-500 LBS. 81.00-87.00; 700-800 LBS. 61.00-64.50. HEIFERS: M&L-1 300-500 LBS. 90.00-94.00; 500-700 LBS. 78.50-94.50; 700-1000 LBS. 70.00-77.00.

S-L&M&L-2 300-500 LBS. 79.00-87.50.

STOCK COWS: BEEF WITH CALVES 590.00-890.00; BABY CALVES BY HEAD 75.00-145.00, BY CWT. 82.00-155.00.

SLAUGHTER COWS: STEADY. UTILITY AND COMMERCIAL 2-4 52.00-60.50; CANNER AND CUTTERS 1-3 43.00-48.00.

SLAUGHTER BULLS 1&2: 63.50-71.00.

LAMBS: 3.75 LOWER. BLUE O HIGH CHOICE AND PRIME 55.75; RED O CHOICE 52.00; FEEDER LAMBS CHOICE 52.00-53.25; SLAUGHTER EWES 10.00-18.50.

SLAUGHTER CALVES: GOOD AND CHOICE 88.00-92.00.

**Friend's Stockyard Inc.**

Accident, Md. 21520  
June 25, 1990

STOCK BULLS & STEERS (200 TO 400 LBS.) 80.00-104.00.  
STOCK HEIFERS: 70.00-93.50.  
SLAUGHTER STEERS: GOOD TO CHOICE 73.50-76.70; MEDIUM TO

GOOD 64.00-73.00.  
HOLSTEIN STEERS: HEAVY 62.00-67.00; LIGHT 57.00-61.50.  
SLAUGHTER HEIFERS: GOOD TO CHOICE 72.00-75.00; MEDIUM TO GOOD 64.00-73.00.  
BULLS: HEAVY 62.50-74.25; LIGHT 62.00-71.50.  
COWS: FEW HIGH DRESSING 59.00-63.50; UTILITY HOLSTEIN 50.00-58.50; CANNERS 44.00-54.00; COMMERCIAL TO GOOD 47.00-54.50; CULL COWS 45.00 & DOWN.  
VEALS: GOOD TO CHOICE 95.00-119.00, MEDIUM TO GOOD 75.00-90.00.

BOB CALVES: 55.00-79.00.  
HOLSTEIN BULL CALVES: RETURN TO FARM 100-120 LB 160.00-185.00.

HOLSTEIN HEIFER CALVES: RETURN TO FARM 100-120 LB 150.00-205.00.

HOGS: TOP QUALITY 57.00-58.10, HEAVY 55.00-57.75; LIGHT 52.00-55.00.

SOWS: 47.00-51.00.  
MALE HOGS: 44.00-46.50.  
BUTCHER LAMBS: 52.00-58.00.  
EGGS: (PER DOZEN) LARGE .62-.71; MEDIUM .55-.60.

**New Holland Dairy**

New Holland Sales Stables  
Wednesday, June 27, 1990

Report supplied by auction

REPORTED RECEIPTS OF 79 COWS, 205 HEIFERS, AND 7 BULLS. MARKET STRONGER ON HEIFERS AND COWS.

PA FRESH COWS: 1050.00-1525.00.  
PA FRESH: 1275.00-1375.00; SPRINGERS: 1150.00-1700.00

NY FRESH COWS: 1100.00-1600.00.  
CANADA FRESH: 935.00-1575.00; SPRINGERS: 875.00-1675.00.

PERRY COUNTY FRESH COWS: 1000.00-1225.00.  
LOCAL SPRINGING HEIFERS: 875.00-1425.00.  
PUREBREDS: 875.00-1650.  
SHORTBREDS: 700.00-1025.00.

BREEDING AGE OPEN: 535.00-725.00.  
BULLS: 620.00-800.00  
PUREBRED BULLS: 775.00-885.00.  
LOCAL COWS: 630.00-1320.00.  
VACCINATED HEIFERS BRING A PREMIUM.

**Central U.S. Carlot**

Pork Report  
June 28, 1990

Report supplied by USDA

CENTRAL U.S. CARLOT PORK REPORT FOB OMAHA BASIS INCLUDES MAJOR PRODUCTION AREAS IN MIDWEST AS OF 11:15 A.M.

COMPARED WEDNESDAY'S 3:00 P.M. CLOSE: FRESH RETAIL PORK CUTS NOT ESTABLISHED; SKND. HAMS STEADY TO 1.00 HIGHER. SDLS BELLIES STEADY. DEMAND LIGHT WITH LIGHT OFFERINGS AND SLOW MOVEMENT.

**19.5 LOADS PORK CUTS BOSTON BUTT**

4-8 LBS.\* 1 LOAD, RANGE 99.00, WGHTD. AVG. 99.00.  
1/2" TRIM 4-8 LBS., 1 LOAD, RANGE 118.00, WGHTD. AVG. 118.00.

1/4" COMBO'S 8-UP LBS., .5 LOAD, RANGE 90.00, WGHTD. AVG. 90.00.  
HAM, SKINNED, FRESH

17-20 LBS., 2.5 LOADS, RANGE 89.00-92.00, WGHTD. AVG. 91.00.

20-26 LBS., 7.5 LOADS, RANGE 91.00-92.00, WGHTD. AVG. 91.60.

26-32 LBS., 2 LOADS, RANGE 79.00-80.00, WGHTD. AVG. 79.50.

32/UP LBS., 1 LOAD, RANGE 78.50, WGHTD. AVG. 78.50.  
BELLY, SDLS, SKIN-ON, FRESH

14-16 LBS., 1 LOAD, RANGE 59.00, WGHTD. AVG. 59.00.

16-18 LBS., 4 LOADS, RANGE 52.00-55.00, WGHTD. AVG. 54.25.

NOTE! (\*) REFLECTS 1/4" TRIMMED PRODUCT BROUGHT BACK TO A REGULAR COMMODITY BASIS.

**Buffalo Produce**

Mifflinburg R3

June 26 and 28, 1990

Report Supplied by Auction

LETTUCE: HEAD, 2.00 BOX.  
SUGAR PEAS: 5.00-12.00 10 LBS.  
BEDDING PLANTS: 2.75-5.00 FLAT.  
STRAWBERRIES: 11.00-13.50 8 QT. FLAT.

VEGETABLE PLANTS: .75-5.00 FLAT.  
HANGING BASKETS: 5.00-7.50 EACH.

RED BEETS: .30-.75 BUNCH.  
ZUCCHINI: 1.50-7.55 1/2 BU.  
HULL PEAS: 2.00-10.50 BU.

BLUEBERRIES: 21.50 AVG. 12 PT. FLAT.

RASPBERRIES, BLACK: 1.60 PT.  
CANTALOPES: 1.55 EACH.  
PEACHES: 11.50 1/4 BU.

STRING BEANS: 7.00 1/2 BU.  
CAULIFLOWER .75 EACH.  
CUCUMBERS: 10.50 BU.

NEXT WEEK'S SALE DAYS ARE TUESDAY, THURSDAY, AND FRIDAY.

**Jersey Shore Livestock Market, Inc.**

Auction every Thursday at 4:00 p.m.

Jersey Shore, Pa.

Report supplied by Auction

Thursday, June 28, 1990  
RETURN TO FARM CALF 100.00-165.00.

GOOD VEAL 90.00-130.00.  
COMMON VEAL 40.00-89.00.

CHOICE STEERS 74.00-78.50.  
SELECT STEERS 63.00-73.00.  
COMMON STEERS 60.00-62.00.

COMMERCIAL COWS 50.00-57.00.  
CANNERS-CUTTERS 48.00-58.00.  
SHELLS 30.00-47.00.

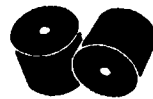
CHOICE HEIFERS 73.00-76.50.  
SELECT HEIFERS 66.00-72.00.  
COMMON HEIFERS 58.00-65.00.

GOOD FEEDERS 70.00-130.00.  
COMMON FEEDERS 40.00-69.00.  
BULLS 57.00-67.00.

GOOD HOGS 57.00-60.60.  
SOWS UP TO 50.75.

**NEED ICE THIS SUMMER?**

We can supply you with Mini Ice cubes for all your needs large or small



**Martin's Ice**

(717) 733-7968

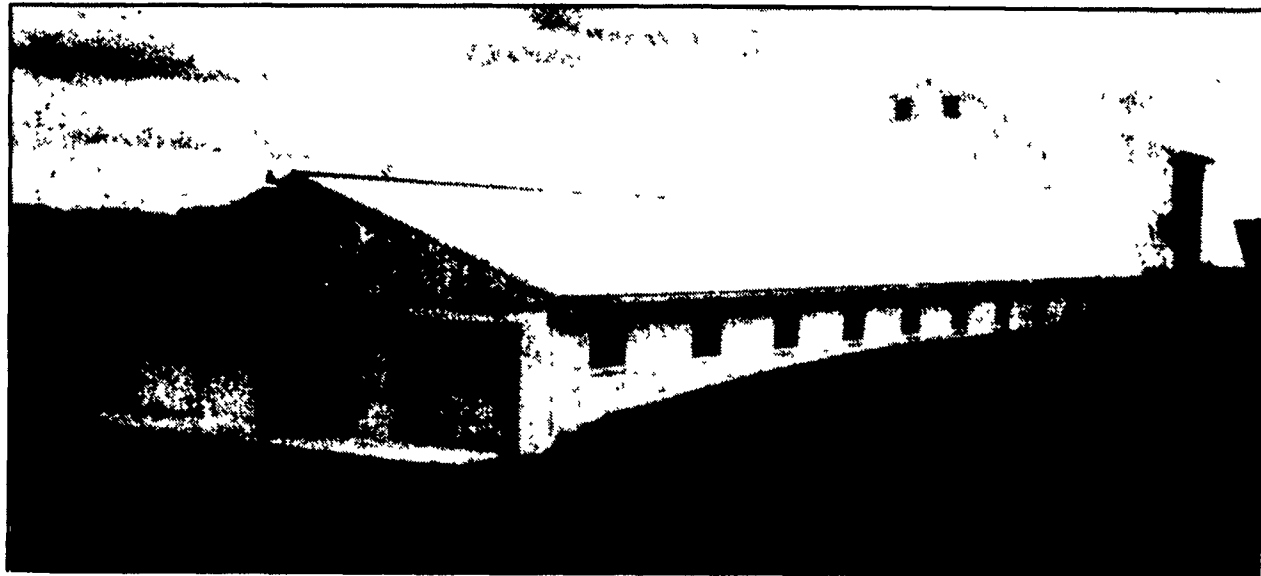
Pleasant Valley Rd.  
Ephrata, PA 17522

**Thanks and Congratulations**

to

**MARLIN & MARTHA BENNETCH and FAMILIES**

On Their New Tiestall Barn



**FEATURES**

- Insulated Block Sidewall
- Clear Span Gothic Truss System In Second Floor Storage Area
- Winch Controlled Ventilation System
- Show-Ease Custom 6 Comfort Tiestalls With Cowmats
- Steel Grid In Cowbeds To Minimize Stray Voltage
- Glazed Tile In Feed Troughs

BUILT BY



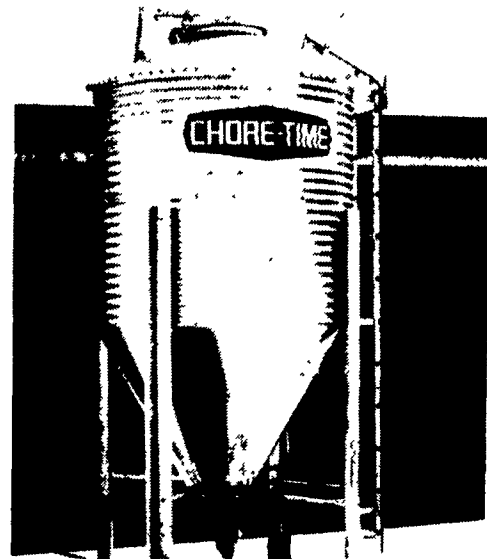
**AGRI-INC.** The Construction Professionals

R.D. 4, Ephrata, PA 17522 • (717) 354-4271

Serving The Agricultural Industry For Over 20 Years

Let Our Experience Work For You For All Your Farm Building Needs, Large Or Small

**CHORE-TIME hopper-bottom bins for feed storage**



Quality Feed Storage Features Help Make Chore-Time Bins A "Best Buy"

Models Available: Your Choice Of 6, 7, 9, 12 And 15 Ft. All Galvanized Hopper-Bottom Bins

We Assemble, Deliver And Set-Up Bins On Your Farm!

Your Authorized **CHORE-TIME** Master Distributor

We Stock A Full Line Of Bins And Augers Check Our Warehouse Prices

Swine & Poultry Systems Specialists

**FARMER BOY AG.**

410E LINCOLN AVE MYERSTOWN PA 17065 PH 717 866 7565

24 Hour Service

Hours: Mon.-Fri. 7:00 to 5:00; Saturday 7:30 to 11:30