

WENGBERS INC.

251 SOUTH RACE STREET, MYERSTOWN, PA. 17067

PH: 717-866-2130

1-800-552-5080

FAX 717-866-4300

NIGHTS
PHONE
717-866-7147
OR
717-273-9089

HOURS:
MON-FRI 7:30 To 5:00
SAT 7:30 To NOON



1985 Ford Passenger Bus, Dual Air, Dual Tanks, V8, PS, PB, Auto, Good Condition, Chrome Wheels, 16 Passenger, Horseshoe Seating Dual Heat, Dual Wheels.

Was ~~\$17,500~~
Now \$11,750



1984 John Deere 410 Tractor Loader Backhoe, New Paint, Cab, Operates Good.

4WD Only \$18,500 4WD



1954 Chevy Pickup's, 3 Speed, 6 Cylinder-Run Good, Easy Restoration Projects, 1 Is A 5 Window.

Choice \$2,750



JD 510 Tractor Loader Backhoe, Diesel, Powershift, Runs Out Good, Good Paint.

Was ~~\$13,500~~
Now \$12,500



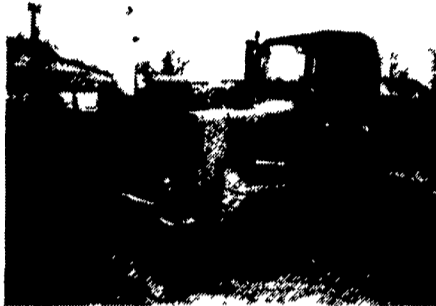
1973 Allis Chalmers 1600 Forklift, 21' Mast, Side Shift, New Paint, Rebuilt Engine.

Was ~~\$11,900~~
Now \$8,900



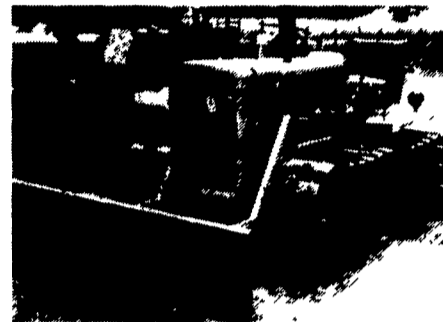
1966 IH 2504 Tractor Loader Backhoe, Gas, Runs & Operates, Above Average Condition.

Only \$6,900



1984 John Deere 450D 6 Way Dozer, ROPS, Clean, New Sprockets, Very Good To Excellent.

\$25,000



1959 John Deere 440 Dozer, Well Above Average, Very Clean Throughout, Good Collector Or User Machine.

Was ~~\$6,900~~
Now \$6,500



1972 Case 450 6 Way Dozer, ROPS, Runs & Operates Good, Good Undercarriage.

Only \$12,500



1982 Case 586C Forklift, 14' Mast, Free Lift, 1400 Hours, Side Shift, Original Paint, Very Good Condition.

\$18,500



1977 John Deere 555 Crawler Loader, ROPS, GP w/Teeth, ROPS, New Paint, Runs Good.

Only \$21,500



NEW 1989 TRAILERS ON SPECIAL

- 2 Axle, 5 Ton, 14 Ft. \$1,795
- 2 Axle 5 Ton, 16 Ft. \$1,895

MISC CONSTRUCTION NEW EQUIPMENT

- | | |
|---|--|
| <p>(100+) Used Hoe Buckets.. Come Look
(75) Loader Buckets.. Come Look
(75) Set Forklift Forks..... Come Look
Ford 4500 Frost Tooth.....\$395
3 Pt. Hitch For Case 580.....\$695
JD 640B Log Skidder Blade..\$1000
Root Rake 7'.....\$1400
Ripper.....\$1500
(3) Tree Planters.. \$350-\$1500
(6) Winch Attach ... \$1000-\$2500
(2) Tree Shearer. \$1500-\$3500
Giant Leaf Vacuum's..... 2 For \$2000
MM 3 Pt. Woodchipper....\$3000
(2) 1-2 Ton Vibratory Roller \$2900-\$4900
Sheepsfoot Roller\$3900
Schramm 160 Air Comp.....\$3900
Snowblower For Big Loader.....\$3900
(2) Sweepers\$600 to \$2900
Huber Maintainer..\$4900
Sheepsfoot Roller..\$4900
AC D Grader\$4900
Jeagar 175 Diesel Compressor.....\$4900
Wayne Stump Grinder.....\$4900
Petibone 5 Ton Yard Crane.....\$5900
Cat 977L Ripper.....\$7500
Vermeer Tree Spade 44" On 4x4 Truck.....\$7500
Construction Ramp.....\$8500
JD 760 Scraper..\$13,700</p> | <p>Boom Poles.....\$125
King Kutter Scraper Blades 6', 7' And 8'\$225-\$995
Seeders- Broadcasters- 3 Pt.\$395
King Kutter Stone Rakes 4', 5', 6', 7' & 8' \$395-\$595
King Kutter Post Hole Diggers 6", 9" And 12" Augers.....\$495
King Kutter Discs 5 1/2' And 6 1/2' - 3 Pt. \$495-\$595
King Kutter Grading Boxes 4', 5', 6', 7' & 8'. \$495-\$595
King Kutter Rotary Mowers 4', 5' And 6' 3 Pt. And Pull Type..\$495 & Up
Aerator 5'- 3 Pt.....\$695
King Kutter Finish Mowers 4', 5', 6' & 7'- 3 Pt. \$995-\$1295
Long Rototillers 55", 63", & 71"..... \$1495-\$1995</p> |
|---|--|

(7) SKID STEER LOADERS

- Clark 533-Diesel....\$4900
- Case 1845.....\$7900
- Koehring 1350.....\$8900
- Case 1835B-Gas....\$8900
- (2) Case 1845.....\$9900
- Koehring 2150....\$10,900

(16) DOZERS

- IH 500 Diesel 6-Way.....\$3900
- IH TD9-92.....\$3900
- JD 430.....\$5900
- JD 440.....\$6500
- JD 450B-6 Way.....\$7900
- JD 350B.....\$8900
- Cat D3 6-Way.....\$11,900
- Case 450.....\$12,500
- (2) Cat D4D \$9500-\$14,500
- Case 450B-6 Way.....\$18,500
- JD 450D-6 Way ..\$25,000
- Cat D5B.....\$29,500
- JD 450E.....\$29,500
- IH TD 25C w/Ripper.....\$49,500
- Case 450B 6 Way LGP 1980 Call

(22) CRAWLER LOADERS

- Oliver OC46.....\$3900
- IH 100B.....\$5900
- MF 400.....\$5900
- (2) IH 125C.....\$6900 to \$10,900
- Case 350.....\$7900
- JD 350B.....\$9500
- (3) JD 450 ...\$6900 to \$9900
- Case 350.....\$7900
- JD 350B.....\$9500
- (2) Case 450 \$6900-\$10,900
- Case 1150B.....\$12,900
- Cat 931-Cab.....\$14,900
- JD 455-Cab-Hoe.....\$19,500
- JD 555.....\$21,500
- Cat 941B\$22,500
- Cat 955L.....\$24,500
- Case 455C.....\$29,500
- Case 855C.....\$29,500
- Cat 977L-Ripper.....\$36,500
- Cat 983 w/Cab.....\$39,500

(4) TRACTORS WITH LOADERS

- MF 40.....\$5900
- Ford 3400.....\$7900
- Ford 335.....\$8500
- IH 260A.....\$9500

(5) LOG SKIDDERS

- Tree Farmer.....\$2900
- JD 440.....\$3900
- Pettibone PT 18....\$3900
- Tree Farmer C5D..\$4900
- JD 440A.....\$7500

(15) TRAILERS

- Hudson 6 Ton Tag-A-Long.....\$1700
- 1989 2 Axle 5 Ton.....\$1795
- New 4 Ton Dump Trl.....\$1800
- New 5 Ton Dump Trl.....\$2100
- 1988-9 Ton.....\$3500
- 1972 Fruehauf 43' Flat\$3500
- 25 Ton Lowboy....\$4250
- 35 Ton Lowboy.....\$4250
- New 25 Ton Tag w/Air.....\$10,800

(11) RUBBER TIRED LOADERS

- IH 500.....\$3900
- Case W7E.....\$6900
- Waldon.....\$7,900
- Cat 922B-Cab-Diesel.....\$9,500
- Clark 75B-Cab....\$17,500
- Ford A62.....\$17,500
- Cat 920.....\$19,500
- JD 544B 1980-Cab-New Tires.....\$24,500
- Cat 930.....\$24,500
- Ford-A66..... Call
- Ford A64..... Coming In

(8) FORKLIFTS

- IH 2400.....\$2900
- White 4000 lb.....\$3900
- White 40 LP.....\$5900
- AC I-800-21'.....\$8900
- Clark 8000 lb. Gas.....\$11,500
- Komatsu FG40 1980 8000 Lb. & Triple Mast.....\$14,500
- Case 586C.....\$18,500
- Sellick Teleporter-1984 247T. 4WD. Forks & Bucket.....\$22,500

(9) TRUCKS

- (4) 1953 to 1960 Chevy Pickups..From \$1600
- 1980 Chevy C30....\$2750
- 1971 IH 1X Dump..\$3900
- 1972 Chevy 35' Bucket Truck...\$4800
- 1985 Ford E350 Mini Bus.....\$11,750
- 1970 GMC Astro w/24' Rollback.....\$15,250

(16) BACKHOES

- (9) Rigid Hoe Attachments.....\$2500 & Up
- (7) 3 Pt. Hoe Attachments.....\$2500 & Up
- Case 530CK.....\$3900
- Ford 4500.....\$3900
- Case 530CK.....\$4900
- JD 2010.....\$5900
- Case 480CK.....\$5900
- IH 2504-Gas.....\$6900
- Case 580B-Cab..\$10,500
- JD 510.....\$12,500
- (2) JD 410.....\$12,500 to \$13,500
- Dynahoe Series 3 190\$16,500
- JD 410-4WD-1984-Cab.....\$18,500
- JD 310B 1986 ROPS\$18,500
- Case 580 Super E\$22,500
- Case 480E-Cab...\$22,500
- Case 580 Super E.....\$24,500

HUNDREDS OF CRAWLERS & BACKHOES FOR SALVAGE

EXCELLENT SELECTION OF AFFORDABLE USED EQUIPMENT