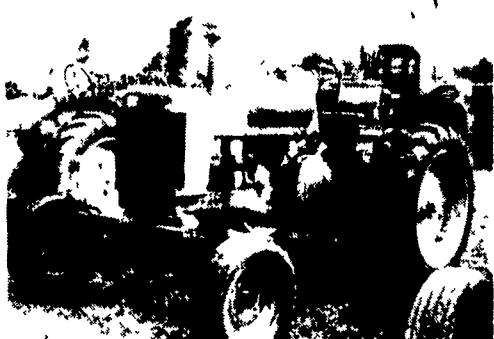




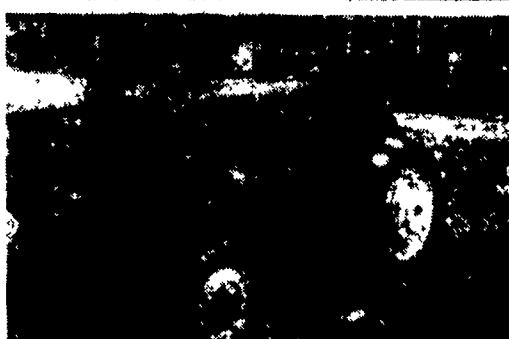
JD 720 Diesel Standard- Another Rare Find, 1957, 18.4x30 Tires (80%), 1 Remote, PTO, Straight & Clean.

Only \$3,800



1956 John Deere 720 LP Gas, Good Collector Material, Factory Widefront, Factory 3 Pt., Straight & Clean.

\$3,900



1949 John Deere M, New Paint, Rear Weights, 75% Tires, Fair Condition.

\$1,900

### COLLECTORS CORNER

#### JOHN DEERE'S

- |                          |                          |
|--------------------------|--------------------------|
| (7) 830's From ..\$4500  | (3) 60's From ....\$1900 |
| (10) 730's From \$2500   | (3) 50's From ....\$1400 |
| (5) 630's From ..\$3200  | (2) 40's From ....\$1900 |
| (3) 530's From ..\$4000  | (8) A's From.....\$1650  |
| (2) 435's From ..\$2500  | (3) B's From.....\$1200  |
| (5) 430's From ..\$2800  | (4) D's From.....\$2500  |
| (5) 820's From ..\$3200  | (4) G's &                |
| (6) 720's From ..\$2500  | GM's From ..\$2800       |
| (4) 620's From ..\$2500  | (5) H's From.....\$1100  |
| (2) 520's From ..\$3250  | (6) L's, LA's,           |
| (4) 420's From ..\$1900  | LI's From.....\$1400     |
| (3) 320's From ..\$3900  | (3) M's, MT's            |
| (4) 80's From ....\$4800 | From.....\$1900          |
| (3) 70's From ....\$1800 | GP .....\$850            |

- (3) R's From.....\$3500  
4020 P.S. High Crop  
(2) 430/440  
Crawlers

#### OTHERS

- (2) Case 400 HI Crop  
Case 830 HI Crop  
Ferg. TO30- Rare  
Variation  
Ford 2000-100 Hours  
(2) Ford 8N- 1 Has  
400 Hours

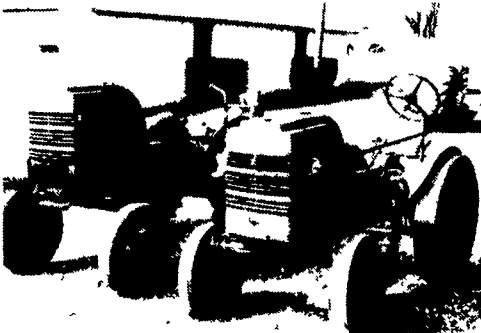
- Ford 541- HI-Crop  
Offset  
Farmall 560- 1500  
Hours  
MH Pony  
Oliver 1550 HI Crop  
Oliver 1650 HI Crop  
Oliver Super 77  
HI Crop  
(2) Oliver 60  
Oliver 70  
Oliver Super 66  
(2) Oliver Super 77

Large building full of pedal tractors, literature, dealer signs, toys, other memorabilia for all name brands.



1938 JD Unstyled "G", New Paint, Runs Good, S/N 6651, Not Found On Every Street Corner Anymore.

Only \$3,600



John Deere L, LA & LI Tractors, 5 To Choose From.

\$1,400 To \$1,800

### 1 FARM EQUIPMENT



NEW IDEA



WHITE FARM EQUIPMENT

#### USED EQUIPMENT

- Brady 12' Flail Shredder
- (2) NH 489 Haybine
- A 6R 30" Head for AC Combine
- JD 4400 Combine w/13' Grain & 4 RN C.H.
- (2) White 706N Corn Heads
- Fox 728 2R Corn Head
- Hesston 7150 Forage Harvester
- JD 7000 6 Row
- JD 7000 12R Corn Planter
- White 2105
- Badger Manure Spreader
- NI 213 Manure Spreader
- NI 109 Fert Spreader
- Int 56 4R Corn Planter
- Hesston PT10 Windrower
- Hay Buster 107 No-Til Drill
- IH 15' Chisel Plow
- Hardi 3 Pt 210 Gal Weed Sprayer
- Dunham Lehr 15' Cult-mulcher
- White 8700 Combine (Sharp) . Coming In
- Ford 309 4 Row Corn Planter
- White 63423 Bot Roll-Over Plow (New, Weathered)
- Bush Hog 2615 Rotary Cutter
- (2) JD 1209 Windrower
- JD Double Windrow Attachment For 1209 Or 1219
- Vicon 321 Disc Mower
- MF 128 Baler w/Thrower

**STANLEY'S FARM SERVICE**  
RD Box 46  
Klingerstown, PA  
717-648-2088

**HOURS:**  
Mon.-Fri.  
7:30 To  
5:00  
Saturday  
7:30 To Noon

## WENGBERS INC.

251 SOUTH RACE STREET, MYERSTOWN, PA 17067

717-866-2130

Or

717-866-7147

(Days)

(After 5:30 P.M.)

# FEED MILL BEING DISMANTLED

## ITEMS FOR SALE:

- Grain Cleaner, A.T. Ferrell Clipper Twin Air, Oak Const., 2250 Bu./Hr.
- Steel Fat Tanks, 2 Ea., 8'x12'
- Fat Pumps and Meters
- Turn Heads, 3 ea.
- Shaker Decks, 3 ea., Sprout Waldron
- Horiz. 2 Ton, S.W. Ribbon Type Mixer w/20 HP Motors
- Air Locks, S.W. 16" Rotary
- Cyclones, S.W., Various Sizes
- Fat Feeder w/Roller Cage
- Auto. Controller, Texas Inst.
- Hopper Scales/Weigh Lorry, 3 Ea., 1000 lb. & 6000 Lbs.
- Electrical Panel, Sq. D, 2000 Amp
- Attrition Mill, S.W., Double Runner, 24" w/2-20 HP Motors
- Misc. Motors, Drives, Blowers, Etc.
- Pelletizer With Steam Feeder, 100 HP, Hand Wound Motor, Rotary Feed Separator
- Hammermills, 3 ea, 24" Sprout Wald., 100 HP, Also 30 HP and 40 HP.
- Harvestore Silos, 4 ea., 17'x45'
- Truck Unloader Dump System, Hydro-Flex, 50 Ton, 10'x34', Twin Cyl.
- Boilers, One Oil, One Oil & Gas, Power Master & Cleaver Brooks
- Asstd. Sheet Metal Storage Bins
- Flat Belt Conveyors, 6 Ea., 16 Inch, Various Lengths.
- Flat Paddle Conveyors, 2 Ea., 24"
- Screw Augers, 20 Ea., 6", 9" & 12", 12 Ft. to 42 Ft.
- Bucket Elevators, 12 Ea., 8"x6", 11"x6", 12"x8", 25' To 70' High
- Bins, Air Operated, 30 Ea.

— CONTACT —

DENNIS NAPOLITON, U.S. WRECKING, PO BOX 1269, LANC., PA 17603

PHONE (717) 393-2992 or 396-0755 EVES.