

Estimated Daily Livestock Slaughter

Under Federal Inspection

June 20, 1990

	CATTLE	CALVES	HOGS	*SHEEP*
WED., 06/20/90 (EST)	125,000	6,000	288,000	20,000
WEEK AGO (EST)	127,000	6,000	287,000	20,000
YEAR AGO (ACT)	124,000	8,000	304,000	20,000
WEEK TO DATE (EST)	371,000	19,000	834,000	58,000
SAME PD LT WK (EST)	372,000	19,000	829,000	61,000
SAME PD LT YR (ACT)	371,000	24,000	892,000	57,000

Kutztown Produce Auction

Fleetwood, PA

10 a.m. Tues. and Thurs., June 19 and 21

Report Supplied by Auction

ASPARAGUS: 1.00 BUNCH.
CAULIFLOWER: .40 HEAD.
BEETS: .60 BUNCH.
CARROTS: .40 BUNCH.
HULL PEAS: 3.50-6.00 1/4 BU.
SUGAR SNAPS: 4.00-6.00 1/4 BU.
SUGAR PEAS: 9.00-12.00 1/4 BU.
EGGS: .55-.80 DOZ.
MUSHROOMS: 8.00-10.00 BOX.
RHUBARB: 9.00 BOX.
STRAWBERRIES: 12.00-16.00 8 QT.
FLAT.
SPRING ONIONS: .30 BUNCH.
ORGANIC LETTUCE, ASSORTED: .55 HEAD.
TOMATOES: LOCAL GROWN, 11.00 10 LBS.; SOUTH CAROLINA 14.50 25 LBS.
GREEN BEANS: 9.00-10.00 1/4 BU.
GREEN, YELLOW SQUASH: 10.00 1/4 BU.
BLACK RASPBERRIES: 2.00 PINT.
RED RASPBERRIES: 1.10 1/4 PINT.
POTATOES: .50-2.50 QT.
WATERMELONS: SOUTH CAROLINA 3.00-4.50 EACH.
FLOWERS: 3.50-5.00 FLAT.

Peoria Cattle

Peoria, Illinois

Thursday, June 21, 1990

FEDERAL-STATE WEEKLY CATTLE SUMMARY TRADING MODERATE. COMPARED WITH LAST MONDAY, SLAUGHTER STEERS AND HEIFERS STEADY TO .50 LOWER. AT THE AUCTION COWS 1.00 TO 2.00 HIGHER. BULLS MOSTLY STEADY. NO RECENT PRICE COMPARISON ON FEEDER CATTLE. SUPPLY MAINLY SELECT TO AVERAGE CHOICE SLAUGHTER STEERS AND HEIFERS WITH ABOUT 8% COWS FOR AUCTION. RECEIPTS THIS WEEK ABOUT 870 AS COMPARED WITH 972 A WEEK AGO AND 1179 A YEAR AGO. SLAUGHTER STEERS: CHOICE 2-4 1050-1350 LBS. 75.50-77.00 LOAD 78.00 SELECT & CHOICE 2-3 1000-1300 LBS. 71.50-75.50 SELECT 2-3 950-1200 LBS. 67.50-71.50.

SLAUGHTER HEIFERS: CHOICE 2-4 950-1150 LBS. 74.50-76.00 SELECT & CHOICE 2-3 900-1100 LBS. 70.50-74.50 SELECT 2-3 800-1050 LBS. 66.50-70.50. COWS: BREAKING UTILITY AND COMMERCIAL 2-4 52.00-57.50 CUTTER AND BREAKING UTILITY 1-2 54.50-59.

HIGH DRESSING 59.50-62.00 CANNER AND LOW CUTTER 1-2 47.50-51.00.

BULLS: YG 1-2 1185-2705 LBS. 65.00-72.75.

FEEDER CATTLE: STEERS: PKG LARGE FRAME #2 659 LBS. 84.50 MEDIUM & LARGE FRAME 800-950 LBS. 73.75-77.75.

HEIFERS: FEW MEDIUM & LARGE FRAME #2 450-530 LBS. 85.00-90.50 PKG LARGE FRAME #2 644 LBS. 79.50.

Peoria Cattle

Peoria, Illinois

Tuesday, June 19, 1990

WEEKLY COW AND BULL AUCTION-MONDAY, JUNE 18, 1990. RECEIPTS THIS WEEK: 147 LAST WEEK: 79.

COMPARED WITH LAST MONDAY COWS 1.00 TO 2.00 HIGHER. BULLS MOSTLY STEADY. NO RECENT PRICE COMPARISON ON FEEDER CATTLE.

COWS: BREAKING UTILITY AND COMMERCIAL 2-4 52.00-57.50 CUTTER AND BREAKING UTILITY 1-2 54.50-59.00 HIGH DRESSING 59.50-62.00 CANNER AND LOW CUTTER 1-2 47.50-51.00.

BULLS: YG 1-2 1185-2705 LBS. 65.00-72.75.

FEEDER CATTLE: STEERS: PKG LARGE FRAME #2 659 LBS. 84.50 MEDIUM & LARGE FRAME 800-950 LBS. 73.75-77.75.

HEIFERS: FEW MEDIUM & LARGE FRAME #2 450-530 LBS. 85.00-90.50 PKG LARGE FRAME #2 644 LBS. 79.50.

Grantsville Livestock

Grantsville, Maryland

Sat., June 16, 1990

HOGS: TOP BARROWS & GILTS 57.50-60.00; HEAVY BUTCHER 52.00-59.00; LIGHT BUTCHER 48.00-58.00; BUTCHER SOWS 48.00-53.50; FEEDER SHOATS 10.50-50.00.

VEAL: GOOD 1.20-1.50; STANDARD 90.00-1.00; UTILITY 70.00-80.00; BULL

CALVES 1.10-1.85.

SHEEP & LAMBS: GOOD 55.00-62.50; UTILITY 50.00-54.00; SLAUGHTER EWES 18.00-30.00.

SLAUGHTER CATTLE: GOOD 70.00-74.00; STANDARD 65.00-67.50; UTILITY 60.00-62.50. HEIFERS: GOOD 65.00-71.00; STANDARD 60.00-63.50; UTILITY 52.00-58.50.

COWS: COMMERCIAL 55.00-63.00; UTILITY 50.00-52.50; CANNER AND CUTTER 45.00-47.00.

BULLS: COMMERCIAL & GOOD 65.00-76.00; CUTTER & UTILITY 55.00-60.00.

STOCK-FEEDER CATTLE: GOOD 75.00-90.00; MEDIUM 65.00-70.00.

STEER CALVES: GOOD 90.00-1.20; MEDIUM 70.00-85.00.

HEIFER CALVES: GOOD 80.00-1.25; MEDIUM 65.00-75.00.

North Jersey Livestock

Hackettstown, NJ

Tuesday, June 19, 1990

Report supplied by auction

CALVES .57 1/2 -1.70.

COWS .43 1/2 -.62.

EASY COWS .16-.52.

HEIFERS .40-.72.

BULLS .59 1/2 -.74.

STEERS .65-.87.

HOGS .47 1/2 -.56 1/2.

SOWS .46-.50 1/2.

ROASTING PIGS EACH 24.00-53.00.

BOARS .47-.69.

SHEEP .10-.57.

LAMBS, EACH 15.00-67.00.

LAMBS PER LB. 23-.85.

GOATS EACH 27.00-91.00.

KIDS EACH 8.00-53.00.

HIDES EACH 10.00.

TOTAL 968.

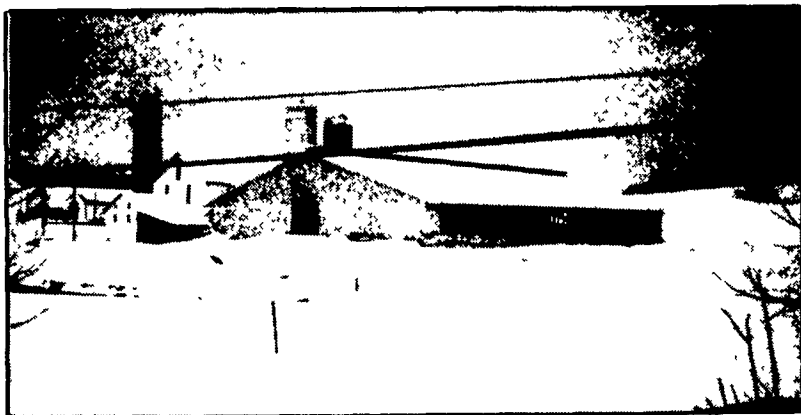
East Coast Carlot

Wed., June 20, 1990

Report supplied by USDA

EAST COAST CARLOT MEAT TRADE DELIVERED PRICES (CAF) BOSTON TO WASHINGTON AREA INCLUSIVE.

COMPARED TO LAST WEEK: NO SALES REPORTED ON LAMB CARCASSES.



CONCRETED SLATTED FREE STALL BARN



ALSO...

- Complete line of H&J Bunks
- Hog & Cattle Slats
- Concrete Hog Penning
- Concrete Post & Beams
- Large percentage of openings keep slats clean and dry
- Absolute comfort for all animal sizes.
- Steam cured reinforced high strength concrete

For Complete Details On Heifer, Cattle And Free Stall Barns Contact

SYRI-CON PRECAST CONCRETE CORP.

477 E. Farmersville Rd., New Holland, PA 17557

717-355-2361

VEAL GROWERS:

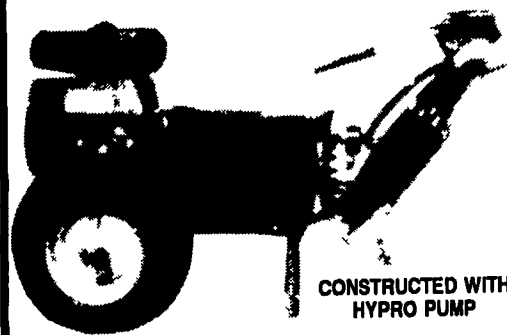
Susquehanna Industries, Inc., the manufacturer of QUANTOCK VEAL FEEDS is taking a major step toward helping veal growers become more independent.

Quality veal growers seeking a line of credit to expand or reach an independent status are invited to contact Susquehanna Industries for further details.

SUSQUEHANNA INDUSTRIES INC

Rt. 171 Box 41-C, Susquehanna, PA 18847
1-800-232-8325 or (717) 853-4000
Pat Fallon, VP, home, 1-800-223-8325

WE MANUFACTURE HIGH PRESSURE WASHERS Portable or Stationary



CONSTRUCTED WITH HYPRO PUMP

Detergents or Soap Fluid Injection Available

We Also Manufacture Coal Fired Hot Water Supply Broilers!

- HIGH-TENSILE FENCING and HARDWARE
- WELDING-STEEL, STAINLESS STEEL & ALUMINUM
- WELDING SUPPLIES
- KENDALL OILS & LUBRICANTS



Kendall Drydene OILS & LUBRICANTS

D.S. MACHINE SHOP

238B Old Leacock Rd., Gordonville, PA 17529

717-768-3853 — UPS Service —