

Leola Produce

Auction

Leola, PA

June 19, 1990

Report Supplied by Auction

ASPARAGUS: 1.00-1.50 12 OZ. BUNCH.
 BLUEBERRIES: 12.00-18.00 12 PT. FLAT.
 GREEN BEANS: 20.00-34.00 BU.
 YELLOW WAX BEANS: 18.00-32.00 BU.
 BROCCOLI: 3.00-7.50 12-14 CT.
 CAULIFLOWER: .55-.78 HEAD.
 CABBAGE, RED: 6.50-10.00 CRATE.
 CABBAGE, GREEN: 3.50-5.50 CRATE.

CUCUMBERS: 10.00-14.50 1 1/9 BU. BUNCH.
 KOHLRABI: 3.00-3.25 12 CT. BUNCH.
 HEAD LETTUCE: 2.00-2.75 12 CT. BUNCH.
 SPRING ONIONS: 10.00-13.25 40 CT. BUNCH.
 NEW POTATOES: 10.00-15.00 25 LBS. OR 1/4 BU.
 HULL PEAS: 6.00-12.00 1/4 BU. 10 LBS.
 SNAP PEAS: 6.00-12.00 1/4 BU. 10 LBS.
 SUGAR PEAS: 6.00-14.00 1/4 BU. 10 LBS.
 RED BEETS: 3.00-8.00 15 CT. BUNCH.
 RHUBARB: 7.50-14.50 15 CT. BUNCH.
 RASPBERRIES, BLACK: 14.00-20.00

12 PT. FLAT.
 RASPBERRIES, RED: 16.00-24.00 12 PT. FLAT.
 STRAWBERRIES: 10.00-20.00 8 QT. FLAT.
 SPINACH: 8.00-14.00 1 1/9 BU.
 TURNIPS: 3.00-4.50 25 LB. POLYBAG.
 TOMATOES: GREENHOUSE 25.00-40.00 25 LBS. #1.
 SUMMER SQUASH: YELLOW 2.50-6.00 1/4 BU.
 PATTY PAN SQUASH: 5.00-10.00 1/4 BU.
 ZUCCHINI, GREEN AND YELLOW: 3.00-7.50 1/4 BU.
 BEDDING PLANTS, FLOWERS: 1.00-4.00 FLAT.

HANGING BASKETS: 2.00-3.50 EACH.
 VEGETABLE PLANTS: ASSORTED VARIETY 1.50-4.00 FLAT.
 NEXT WEEK'S SALE DAYS MONDAY, TUESDAY, THURSDAY AND FRIDAY, 10 A.M.

Oklahoma City Feeder Cattle

Oklahoma City, Okla.

Wednesday, June 20, 1990

****ATTENTION DODGE CITY****
 OKLAHOMA NATIONAL STOCKYARDS.

WEEKLY CATTLE SUMMARY COMPARED WITH LAST WEEK: FEEDER STEERS OVER 700 LB. FIRM TO 2.00 HIGHER. ALL OTHER STEERS AND HEIFERS STEADY. DEMAND CONTINUES VERY AGGRESSIVE FOR FEEDER STEERS OVER 700 LB.. QUALITY OF OFFERINGS AVERAGE TO ATTRACTIVE FROM BOTH A FLESH AND KIND STANDPOINT. HOWEVER WEIGH CONDITION MOSTLY FULL. CALF DEMAND CONTINUES JUST FAIR AS WHEAT HARVEST IS TAKING PRECEDENCE TO STOCKING PASTURES. SLAUGHTER COWS CLOSED 1.00-2.00 HIGHER. SLAUGHTER BULLS 1.00 HIGHER. DEMAND GOOD FOR BOTH CLASSES. RECEIPTS THIS WEEK 7,300; LAST WEEK 8,956; LAST YEAR 8,637. RUN INCLUDED 70% YEARLINGS; 26% CALVES & LIGHT STOCKERS; 4% COWS & BULLS.

BULK RANGES FOR THE WEEK FOLLOW:

FEEDER STEERS: MEDIUM & LARGE FRAME 1, FEW 300-325 LB. 111.50-120.00; 400-450 LB. 103.75-111.50; 450-500 LB. 101.00-103.00; 500-625 LB. 96.00-102.00; 625-700 LB. 91.00-97.75; 700-750 LB. 92.00-95.00; 750-800 LB. 90.00-93.00; 800-850 LB. 87.00-91.00, SLIGHTLY THIN & GAUNT LIMO CROSSES 1/2 LOAD 800 LB. 92.75; 850-900 LB. 86.50-90.25. LARGE FRAME 2 MOSTLY FULL HOLSTEINS, 475 LB. 86.00; 500-625 LB. 80.50-83.00; 650-700 LB. 77.50-79.50; 700-800 LB. 75.00-79.00; 800-825 LB. 73.75-75.00.
 FEEDER HEIFERS: MEDIUM & LARGE FRAME 1, FEW 300-400 LB. 99.75-107.00; 400-500 LB. 90.00-97.50; 500-600 LB. 89.00-94.50; 600-700 LB. 86.75-89.50; 700-800 LB. 84.00-87.50; 800-875 LB. 82.25-86.00.
 SLAUGHTER COWS: CLOSING SALES: CUTTER, BONING & BREAKING UTILITY Y.G. 1-3 AVERAGE DRESSING MOSTLY 55.50-58.50, HI DRESSING 57.50-59.50, LO DRESSING 51.00-54.50. CANNER & LO CUTTER 47.00-54.00.
 SLAUGHTER BULLS: Y.G. 1 1300-2100 LB. AVE DRESSING 63.00-66.00, HI DRESSING 66.00-70.00, LO DRESSING, FLESHY, OR THIN 57.00-63.00.

C.B. HOOBER & SON, INC.
 Intercourse, PA
 (717) 768-8231



HOOBER EQUIPMENT, INC.
 Middletown, DE
 (302) 378-9555

TWO LOCATIONS
The Saving Place

Parts
Payback

Seat for lawn and garden tractors Now's the time to replace that old seat with one that's as comfortable as it is durable. Made of strong vinyl that resists mildew and cracking. And patterned to stay dry with channels that prevent rainwater from collecting. Universal mounting.



Everyday low price 38.78
 Less Rebate 4.00
 Net cost after rebate Limit 1. **34.78**
\$4 REBATE

Heavy-Duty Jacks



8-ton Capacity
 Everyday low price 29.20
 Less rebate 4.00
 Net cost after rebate **25.20**

20-ton Capacity
 Everyday low price 61.10
 Less rebate 4.00
 Net cost after rebate **57.10**
 Limit 1 jack

YOU STAY PUT



Pick Up Your Phone And Place Your Parts Order With Us

WE SHIP PARTS DAILY Via UPS-PPSH-BUS-AIR FREIGHT, ETC.

HOURS

Mon.-Fri. 7 AM-5 PM; Sat. 7 AM-Noon

CALL US...

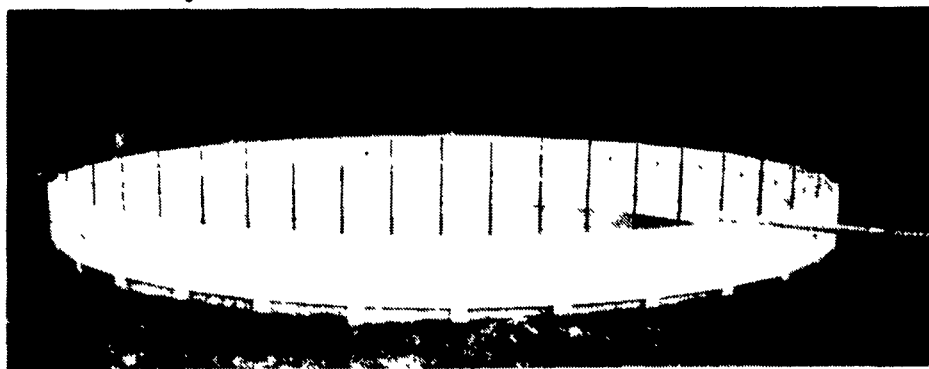
It Could Be We Have It



Authorized UPS Station

Manure management systems to match your kind of livestock, type of manure ...and economics

"PLAN NOW for 1990 Construction" Contact us to discuss your MANURE MANAGEMENT PLANS



PRECAST CONCRETE - CIRCULAR TANKS

- * 8' or 12' depth
- * 24' thru 90' diameter
- * Inground or above ground
- * Exclusive: Tongue & groove vertical joints
 Continuous cable around tank
 Liquid tight closure pour at base
- * 50 year service life



Sollenberger Silos Corp.

A Nitterhouse Company
 Box N Chambersburg, PA 17201 (717) 264-9588

SINCE BEFORE 1910

Office Number - 717-264-9588

For Upright Silos Call
 Bob Francis
 717-532-6848

Evenings

For Bunker Silos & Manure Systems
 Call Tabb Justus
 717-762-8683

or Mike Hai
 717-263-0792

COW MATS

Save Cows, Time, And Bedding
 One Piece Up To 100 Feet.



Bob Gabel

Route 16, Chaffee, N.Y. 14030
 Phone Collect 716-496-6025

"BELT BUSTERS"



Save on Flat Belts for Your Farm Machinery! We Will Make the Belt You Need and Ship Same Day by U.P.S. - We're Fast!

- * Bale Thrower Belts
 - * Round Baler
 - * Harvesting Machines Like Bean, Cherry, Grape, Etc.
 - * Forage Box Belts for Gehl, Grove Kasten, New Idea, Etc.
- Quality Belts at Farmer Prices

SORRY, NO V-BELTS

Agricultural Belt Service

(Former Division of Bob Gabel Belting)

Rt. 16, Chaffee, New York 14030

PHONE 716-337-BELT