

Morrison's Cove Livestock

Martinsburg, Pa.
June 11, 1990

Report supplied by auction
CATTLE 163. STEERS: H. CHOICE & PRIME 74.50-78.50, CHOICE 71.00-74.25, GOOD 67.00-70.50, STANDARD 59.50-65.00. HEIFERS: 72.00-75.50; GOOD 62.50-71.00.

COWS: UTILITY & COMMERCIAL 56.00-60.50; CUTTERS 52.00-55.75, CANNER & LOW CUTTER 46.00-51.75.

BULLOCKS: GOOD & CHOICE 70.50-73.25.

BULLS: YIELD GRADE NO. 1 63.50-70.25.

FEEDER CATTLE: STEERS 68.50-104.00, BULLS 65.00-92.50; HEIFERS 63.00-89.00.

CALVES 244. PRIME 104.00-118.00; CHOICE 96.00-102.50, GOOD 88.00-95.00, STANDARD & GOOD 69.00-84.50, 90-110 LBS. 82.00-96.50, 65-90 LBS. 74.00-92.50, HOLSTEIN BULLS 90-130 LBS. 158.00-201.00, HOLSTEIN HEIFERS 90-130 LBS. 130.00-168.00.

HOGS 130. US NO. 1-2 62.00-63.25, US NO. 1-3 59.00-61.50.

SOWS: US NO. 1-3 49.00-56.50.

BOARS 47.00-51.00.

FEEDER PIGS 41. US NO. 1-3 20-35 LBS. 18.50-41.50 PER HEAD, NO. 1-3 35-50 LBS. 43.00-52.00 PER HEAD.

SHEEP 39. CHOICE 61.00-64.50; GOOD 52.50-58.50; SLAUGHTER EWES 15.00-24.50.

GOATS: 22.00-64.00 PER HEAD.

HAY: 3 LOADS, 66.00-99.00.

You Can Buy



Diffenbach's New Holland Auction Center, Ltd.
100 WEST JACKSON ST. • BOX 485 • NEW HOLLAND, PA. 17557
PHONE (717) 355-7253 (717) 393-4464 (717) 354-3297

You Can Sell

HAY SALE EVERY MONDAY- 10:00 A.M.

1990 SPECIAL SALES

JUNE 1990						
S	M	T	W	T	F	S
-	-	-	-	-	1	2
3	4	5	6	7	8	9
10	11	12	13	14	15	16
17	18	19	20	21	22	23
24	25	26	27	28	29	30

JULY 1990						
S	M	T	W	T	F	S
1	2	3	4	5	6	7
8	9	10	11	12	13	14
15	16	17	18	19	20	21
22	23	24	25	26	27	28
29	30	31	-	-	-	-

AUGUST 1990						
S	M	T	W	T	F	S
-	-	-	1	2	3	4
5	6	7	8	9	10	11
12	13	14	15	16	17	18
19	20	21	22	23	24	25
26	27	28	29	30	31	-

- FRI. JUNE 15 9:00 A.M. Farm Equipment & Supplies
- SAT. JUNE 30 10:00 A.M. Bertha Shirk, Paradise. Real Estate, HH Goods & Antiques. (On the premises)
- FRI. JULY 13 9:00 A.M. Farm Equipment & Supplies
- TUES. & WED., JULY 24 & 25 9:00 A.M. Quilts, Crafts, & Buggies
- SAT. AUG. 11 9:00 A.M. Elizabeth L. Herr, 1347 Beaver Valley Pike Willow Street, Pa. RE, Antiques & HH Goods (On the premises)
- FRI. AUG. 17 9:00 A.M. Farm Equipment & Supplies
- TUES. AUG. 28 6:00 P.M. Guns of all descriptions
- TUES. SEPT. 4 6:00 P.M. Lawn Mowers & Garden Equipment
- FRI. SEPT. 14 9:00 A.M. Farm Equipment & Supplies
- TUES. SEPT. 25 6:00 P.M. Guns of all descriptions
- SAT. OCT. 6 9:00 A.M. Camp Deer Park Benefit Auction
- FRI. OCT. 12 9:00 A.M. Farm Equipment & Supplies
- TUES. & WED., OCT. 23 & 24 9:00 A.M. Quilts, Crafts, & Buggies
- FRI. NOV. 9 9:00 A.M. Farm Equipment & Supplies
- SAT. NOV. 24 9:00 A.M. Toys, Crafts, Gifts, & Tools

SEPTEMBER 1990						
S	M	T	W	T	F	S
-	-	-	-	-	-	1
2	3	4	5	6	7	8
9	10	11	12	13	14	15
16	17	18	19	20	21	22
23	24	25	26	27	28	29
30	-	-	-	-	-	-

OCTOBER 1990						
S	M	T	W	T	F	S
-	1	2	3	4	5	6
7	8	9	10	11	12	13
14	15	16	17	18	19	20
21	22	23	24	25	26	27
28	29	30	31	-	-	-

NOVEMBER 1990						
S	M	T	W	T	F	S
-	-	-	-	-	1	2
3	4	5	6	7	8	9
10	11	12	13	14	15	16
17	18	19	20	21	22	23
24	25	26	27	28	29	30
-	-	-	-	-	-	-

DECEMBER 1990						
S	M	T	W	T	F	S
-	-	-	-	-	-	1
2	3	4	5	6	7	8
9	10	11	12	13	14	15
16	17	18	19	20	21	22
23	24	25	26	27	28	29
30	31	-	-	-	-	-

Contact Us For Rates
And Dates For Your Sales

ADD YOUR SALE TO THIS LISTING NOW!
Diffenbachs Aucts. 225L
Bonded Licensed Livestock Dealer and Order Buyer

Equipped And Ready
To Serve You

SHORT NOTICE
HORSE SALE
FRIDAY EVE., JUNE 1

**NEW HOLLAND SALES STABLES INC.
THE ACTION AUCTION**

REGISTERED HEIFER
SALE
SATURDAY, JUNE 9

LIVESTOCK IS OUR ONLY BUSINESS

MONDAY

SLAUGHTER HOGS



EARLY BIRD HOG SALE
7:30 A.M.

Sell Your Hogs At New Holland Sales Stables, Inc.
See them weighed, sold and pickup your check.

10:00 AM

HORSES MULES



1:30 PM

BEEF SALE

SHEEP



CALVES

WEDNESDAY

DAIRY 11:00 AM COW SALE 12:00 NOON COWS



We have the usual run of 50 to 100 Heifers, all ages.
Loads of fresh cows and springers from our regular shippers.
Also some local fresh cows and springers.

1:30 P.M.
FEEDER PIG SALE

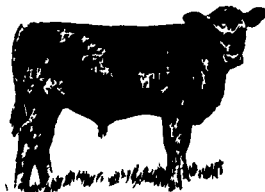


Pigs are accepted after 6:30 A.M. State graded from 8 to 12 Dairy Barn and Feeder Pig Barn are cleaned and disinfected weekly for your protection.

THURSDAY

Beef Auction
10:00 A.M.

BULLS
STEERS
BEEF COWS



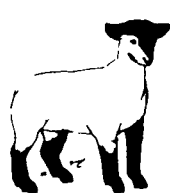
STOCKERS
&
FEEDERS

1:30 P.M.

SHEEP

GOATS

CALVES



NEW HOLLAND SALES STABLES, INC.

12 Miles East of Lancaster Off Route 23, New Holland, Penna.

MANAGERS
Norman & David Kolb - 717-397-5538

Sale Barn Officer Manager
Roger Floyd - 717-354-4341

Field Representatives
Luke Eberly - 215-267-6608 738-1865
Homer Eberly - 215-267-3047

Order Buyer
Paul Good - 215-445-6662
Feeder Pig Representative
Mel Hoover - 717-354-8397