

Greencastle Livestock

Greencastle, Pa.

Monday, June 11, 1990

SLAUGHTER CATTLE RECEIPTS: 487 HD. SLAUGHTER STEERS: 115 HD. TREND: STEADY.

CHOICE 2-3 950-1075 LBS. 73.00-78.50; CHOICE 2-3 1075-1375 LBS. 75.00-81.00; CHOICE 2-3 OVER 1375 LBS. 74.00-79.50; SELECT AND CHOICE 1-2 950-1100 LBS. 67.00-73.00; SELECT AND CHOICE 1-2 1100-1375 LBS. 70.00-72.50; SELECT AND CHOICE 1-2, OVER 1375 LBS. 66.00-71.50.

HOLSTEINS: CHOICE 2-3 1050-1450 LBS. 65.00-70.00; SELECT 1-2 1050-1450 LBS. 61.00-66.00.

SLAUGHTER HEIFERS: 65 HEAD. TREND: STEADY. CHOICE 2-3 850-1000 LBS. 65.00-73.00; CHOICE 2-3 1000-1250 LBS. 68.00-77.00; CHOICE 4, ALL WEIGHTS, 66.00-71.00; SELECT AND CHOICE 1-2 850-1000 LBS. 63.00-71.50; SELECT AND CHOICE 1-2 1000-1250 LBS. 66.00-74.00.

HOLSTEINS: CHOICE 2-3 1000-1350 LBS. 62.00-69.00; SELECT AND CHOICE 1-2 1000-1350 LBS. 59.00-64.50.

SLAUGHTER BULLS: 26 HEAD. YG#1, ALL WEIGHTS, 66.00-74.50; YG#2, ALL WEIGHTS, 59.00-67.00.

BULLOCKS: 4 HEAD. CHOICE 1-3 1150-1375 LBS. UP TO 78.50.

COWS: 197 HEAD. BREAKING UTILITY AND COMMERCIAL 53.00-58.00, FEW TO 60.00; CUTTER AND BONING UTILITY 52.00-57.50; CANNER AND LOW CUTTER 52.00 AND DOWN.

STOCKER AND FEEDER CATTLE RECEIPTS: 80 HEAD. BEEF TYPES 200-400 LBS. STEERS TO 112.00, BULLS TO 105.00, HEIFERS TO 100.00; 400-600 LBS. STEERS TO 95.00, BULLS TO 87.00, HEIFERS TO 90.00; 600-800 LBS. STEERS TO 88.00, BULLS TO 75.00, HEIFERS TO 72.00; 800-975 LBS. STEERS TO 73.50. HOLSTEINS AND DAIRY CROSS 200-400 LBS. STEERS TO 120.00, HEIFERS TO 115.00; 400-600 LBS. HEIFERS TO 83.00.

CALVES: 573 HEAD. VEAL CALVES GOOD 150-300 LBS. 105.00-115.00; GOOD 100-150 LBS. 100.00-110.00; GOOD 80-100 LBS. 85.00-95.00; STANDARD 80-100 LBS. 80.00-90.00; STANDARD 80 LBS. AND DOWN TO 85.00.

CALVES RETURNING TO FARM: TREND: STEADY. HOLSTEIN BULLS OVER 100 LBS. 160.00-195.00, UNDER 100 LBS. 150.00-192.00; HOLSTEIN HEIFERS OVER 100 LBS. TO 202.00, UNDER 100 LBS. 120.00-175.00; BEEF TYPE BULLS OVER 90 LBS. TO 180.00; BEEF TYPE HEIFERS TO 165.00.

SHEEP AND LAMBS: 64 HEAD. LAMBS: CHOICE 80-100 LBS. 56.00-65.00; 100-120 LBS. 52.00-57.00; FEEDER LAMBS 60-85 LBS. TO 70.00.

SHEEP: EWES, LEAN 20.00-26.00; EWES FAT 12.00-22.00.

GOATS: 21 HEAD. SMALL TO 30.00; MEDIUM TO 45.00; LARGE TO 75.00. HOGS, SOWS AND BOARS: 135 HEAD. HOGS: BARROWS AND GILTS TREND: STEADY TO STRONG. 210-250 LBS. TO 60.50; 250-260 LBS. TO 58.50; 260-270 LBS. TO 56.00; 270-300 LBS. TO 54.00. LIGHT HOGS: 180-210 LBS. 55.00-59.00. SOWS: TREND: STRONGER. GOOD SOWS UNDER 400 LBS. TO 54.00, OVER 400 LBS. TO 55.00.

BOARS: 210-260 LBS. 50.00-52.50; 260-300 LBS. TO 51.00; 300 LBS. AND OVER TO 49.50.

FEEDER PIGS: BY THE HEAD, 20-30 LBS. 25.00-36.00; 30-40 LBS. 30.00-43.00.

SALE EVERY MONDAY AT 2 P.M.

AND EVERY THURSDAY AT 1 P.M. HAY AND STRAW SALE EVERY MONDAY AND THURSDAY AT 11:30 A.M.

SPECIAL FEEDER CATTLE SALE FRIDAY, JULY 6 AT 7:15 P.M.

SPECIAL FEEDER PIG SALE SATURDAY, JUNE 23 AT 1 P.M.

New Holland Dairy

New Holland Sales Stables

Wednesday, June 13, 1990

Report supplied by auction

REPORTED RECEIPTS OF 31 COWS, 42 HEIFERS, AND 8 BULLS. MARKET STEADY.

PA FRESH COWS: 1025.00-1650.00.

PA FRESH COWS: 950.00-1375.00, SPRINGERS 1150.00-1400.00.

LOCAL SPRINGING HEIFERS: 810.00-1140.00.

SHORTBREDS: 575.00-875.00.

BULLS: 395.00-1000.00

VACCINATED HEIFERS BRING A PREMIUM.

LOCAL COWS: 550.00-1285.00

Peoria Sheep

Peoria, IL

June 12, 1990

SHEEP: 100 TRADING MODERATE. COMPARED WITH LAST TUESDAY SLAUGHTER LAMBS MOSTLY STEADY.

SPRING SLAUGHTER LAMBS: CHOICE AND PRIME 110-115 LBS. 54.00-55.00, 85-95 LBS. 52.00-53.

Store Hours

Mon.-Fri. - 7 AM - 5 PM

Sat. - 7 AM - 11:30 AM

Sun. Closed - Lord's Day



BINKLEY & HURST BROS. INC.

133 Rothsville Station Rd. • Lititz, PA 17543
Phone 717-626-4705

WE SHIP PARTS DAILY

FEDERAL EXPRESS

TRUCK PART

AIR FRT

FAST DELIVERY SERVICE

HIGH PRESSURE WASHERS:



David Brown



SUNFLOWER



KINZE CORN PLANTERS & GRAIN CARTS



BUSH HOG ROTARY CUTTERS, Bat Wing Model & Others



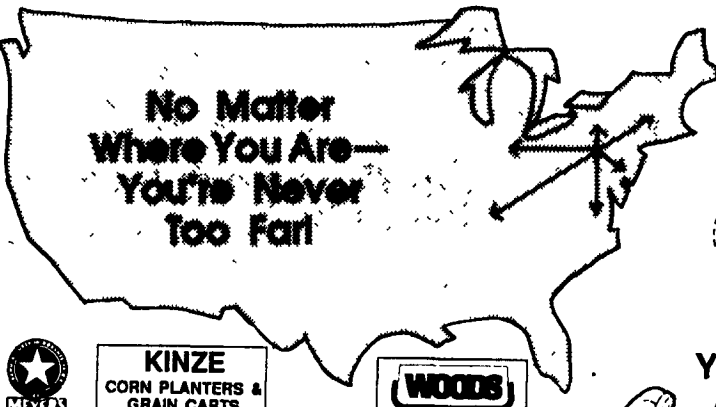
WOODS MOWERS & BLADES



ATHENS DISK HARROW, COULTER, CHISEL, CHISEL PLOW



And Much More!



Busy As A Bee?

Your Parts Are Just A Phone Call Away!

STORAGE BARNS & GAZEBOS

Custom Made To Order



If You're Looking For Quality At A Good Price, Contact

B & B STRUCTURES

Henry K. Blank

RD 1, Bird-In-Hand, PA 17505

(717) 656-0783

Dealer Inquiries Invited

DELIVERY AVAILABLE

The Round-About™ hay tool does everything but the baling.

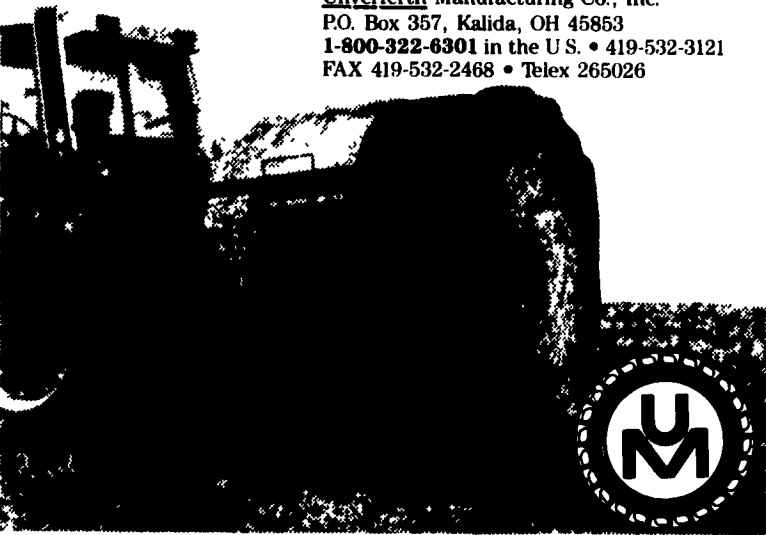
Thanks to its innovative, patent-pending design, Unverferth's Round-About™ universal hay tool lifts, spins, wraps, transports, and un-rolls round bales of any size or weight. That's complete performance.

Features automatic plastic advancement to make wrapping your round bales a breeze.

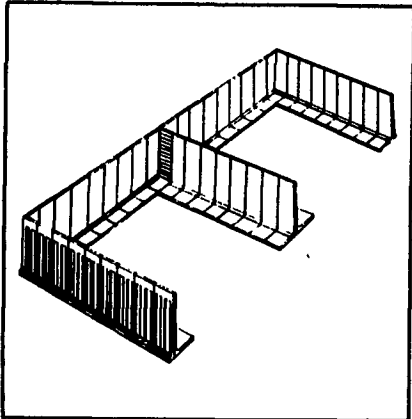
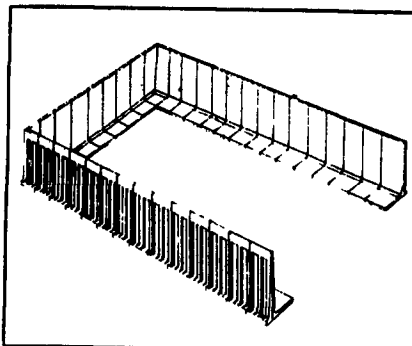
To find out more about the advantages of the Round-About™ hay tool, call for free literature today.

1-800-322-6301

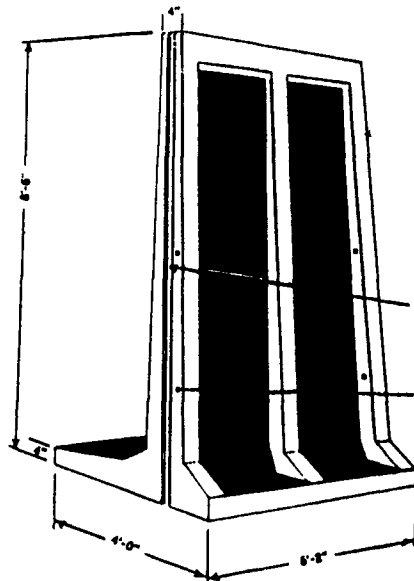
Unverferth Manufacturing Co., Inc.
P.O. Box 357, Kalida, OH 45853
1-800-322-6301 in the U.S. • 419-532-3121
FAX 419-532-2468 • Telex 265026



The Sollenberger UPRIGHT BUNKER SILO



- Fast installation
- Low Cost
- Durable
- Moveable
- Attractive
- Quality Storage for corn silage, haylage and high moisture ground ear corn
- Other uses — Storage for bulk materials, retaining walls and manure pits.



Approximate Weight: 3750 lbs.



Sollenberger Silos Corp.

A Nitterhouse Company
Box N Chambersburg, PA 17201 (717) 264-9588

SINCE BEFORE 1910

Office Number - 717-264-9588

For Upright Silos Call

Bob Francis

717-532-6848

For Bunker Silos & Manure Systems

Call Tabb Justus

717-762-8663

or Mike Hair

717-263-0792

Evenings