

Farm Forum

(Continued from Page A10)

time. We pay for costly veterinarian bills when our animals step on foreign objects in their pasture, or worse yet when animals ingest slivers of glass or shredded metal inadvertently ground into their feed. Many of them must be removed from our milking herds. Some do not survive the ordeal.

The citizens of this state lose when farmland is lost to open another landfill to dump our solid wastes. We must stop taking productive land out of production for use as a dump for recyclable materials.

The Pennsylvania General Assembly has begun to deal with this terrible problem with the passage of a recycling law. However, the law does not go far enough. A returnable beverage container law is the answer. It is a natural complement of recycling.

PennDot spends millions in roadside litter pickup. Huge amounts of tax dollars are expended by our municipalities to dispose of their communities' solid wastes. We are in a crisis situation as more and more landfills reach capacity and public sentiment is against opening new ones. It's time to eliminate discarded beverage cans and bottles which account for more than 15% of our solid wastes.

A refundable deposit is the answer. It's working in other states. It will work here. We have been asking for this action for more than 15 years to no avail. It's time for a returnable beverage

container law. So why not put it on the ballot. Let the voters of Pennsylvania decide.

John J. Hess
Gettysburg

Editor:

Did you know that the third week in June has been proclaimed Dairy Goat Week? If you don't believe me, contact the Dairy Goat Journal, 6041 Monona Drive, Monona, WI 53716.

There is a company that makes Condensed, powder plus UHT pasturized goat milk. There is also a lot of children and adults that cannot drink cows milk because of medical reasons. If you want any more information, contact me.

Evan P. Weidman
Box 138, RD1
Uylsses, PA 16948

Editor:

For over 50 years I have been associated with vocational agriculture and with the Future Farmers of America. My father was a vo-ag teacher and FFA advisor at both secondary and college levels; my husband and I are honorary FFA members and one of our sons graduated from a vo-ag curriculum and is a Keystone Farmer. So, it is personally disappointing that partial information and misinformation is being circulated about state funding proposals for agriculture. It is important that any discussion of state support is based on fact, and I hope that I can provide facts which will be helpful.

First of all, vocational/

agricultural education is funded as part of the state support for all basic education. Monies for transportation, for instructional costs (including teacher salaries) and capital improvements are provided with the subsidy (billion) dollars provided to all school districts through the Department of Education. The Casey Administration has increased staff support in the Department of Education, not decreased it, since coming into office in January of 1987. In June of 1987 a full-time program specialist was hired to provide leadership in agricultural education. In addition, there are two part-time positions (one is vacant) in which the total responsibilities are assisting the FFA, and are supplemented by professionals in the regional offices who have a responsibility to provide direct technical assistance (through our field offices). The Acting Director of the Bureau of Vocational and Adult Education is a former vo-ag teacher and FFA advisor who is committed to strengthening our entire vocational education program.

Through the Department of Agriculture we are continuing our support of FFA. FFA members, as well as 4-H members, realize premium monies from the 112 local/county fairs in our state. The Pennsylvania Agricultural Fair Program reimburses these fairs for their premium expenses; thus, we are also contributing monies to these same youth from another source.

The chart listed below will provide you with an overview of the monies flowing from the Department of Agriculture in support of FFA youth since Governor Casey took office in 1987. It is important to note that grants, under this law,

are made on the basis of membership and expenses incurred, thus

grant amounts may vary from year to year.

	FY87-88	FY88-89	FY89-90
48 county FFA chapters	\$84,885.92	\$80,395.28	\$81,565.31
Pa. Association of FFA	2,000.00	11,849.26	12,000.00
Pa. Young Farmers Assoc.	5,292.50	2,806.50	3,101.39
4-H & Vocational through the county/local fairs	not avail.	235,000.00	261,000.00

The funding for the FFA Foundation, \$33,000 in 1989-90, was proposed and added by the legislature. It was the understanding of the administration that these funds were to help revitalize the Foundation, a private fund-raising organization. Certainly in years when there is ample budget money such an expenditure is appropriate, but in lean years the government, like private citizens, must tighten the belt. Can we provide continued money for the Foundation? What about 4-H and other youth organizations? Are there agri-businesses and other agricultural leaders who can assist the Foundation with its fund development?

This administration remains committed to supporting agriculture for today's farmers and those

who are to come. For example, the Secretaries of Agriculture and Education are now discussing an agriculture in the classroom program with legislative leaders, designed to help all young people have a better understanding of the importance of the Commonwealth's #1 industry.

We will continue to work with the legislature and with appropriate departments to support vo-ag and FFA, but it serves no purpose for the program or the young people we serve to make this issue a partisan attack on this administration. The Commonwealth deserves better.

Helen Dickerson Wise
Deputy Chief Of
Staff For Programs
And Secretary To
The Cabinet

Couple Know Their Neighbors

YORK (York Co.) — York Farm Credit, ACA recently announced the winner of the "Do You Know Your Neighbor" contest held at the Cumberland County Extension Dairy Day.

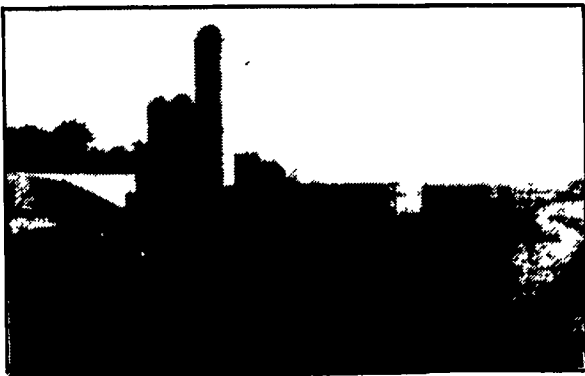
The winner, who guessed four Cumberland County aerial photographs of farms correctly, were Clyde and Mabel Strock from Mechanicsburg, Chris E. Renner,

Senior Loan Officer from York Farm Credit presented to the Strock's an aerial photo of their farm taken by attorney Roger Morgenthal, owner of Legal Eye Aerial Photography.

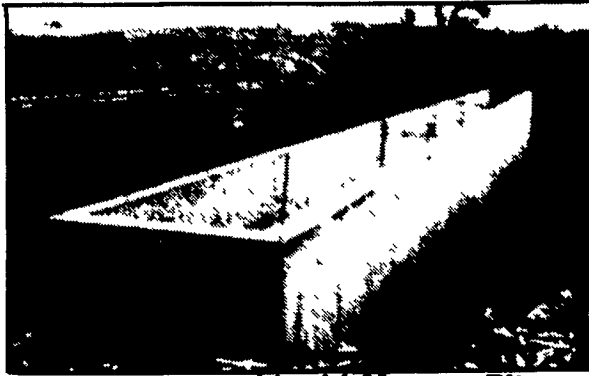
York Farm Credit, ACA presently provides over \$116 million in long, short and intermediate term loans to borrowers in South Central Pennsylvania.

POURED SOLID CONCRETE STORAGE SYSTEMS

17 Years Experience In Pouring Concrete Manure Pits!



Above-Ground Liquid Manure Tank For Dairy Operation - 235,000 Gal.

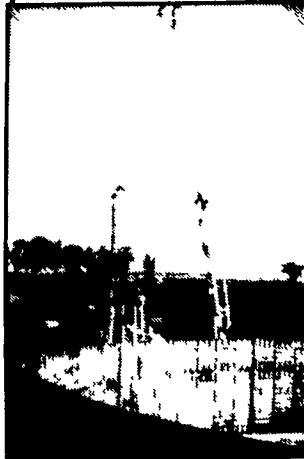


Hog House-Liquid Manure Pit



In-Ground Liquid Manure Tank For Hog Operation - 324,000 Gal.

Construction Of In-Ground Liquid Manure Tank- 425,000 Gallons.



CONCRETE PUMPING SERVICE AVAILABLE



Mixer And Boom Trucks



92' Boom Placing Concrete



Placing Concrete On Site

Take the questions out of your new construction Call Balmer Bros. for quality engineered walls.

All sizes available Round or rectangular

Invest in Quality - It will last a lifetime.

Balmer Bros.

CONCRETE WORK, INC.

243 Miller Road Akron, PA 17501

(717) 733-0353
6:30 AM - 3:30 PM

(717) 859-2074
After 6:00 PM