

**Friend's Stockyard, Inc.**

Accident, Md. 21520  
 June 4, 1990  
 STOCK BULLS & STEERS (200 TO 400 LBS.) 80.00-108.00.  
 STOCK HEIFERS: 74.00-93.50.  
 SLAUGHTER STEERS: GOOD TO CHOICE 74.50-77.60; MEDIUM TO GOOD 67.00-74.00.  
 HOLSTEIN STEERS: HEAVY 62.00-67.50; LIGHT 57.00-61.50.  
 SLAUGHTER HEIFERS: GOOD TO CHOICE 72.00-75.10; MEDIUM TO GOOD 64.00-73.00.  
 BULLS: HEAVY 62.50-75.00; LIGHT 62.00-71.50.  
 COWS: FEW HIGH DRESSING 56.50-62.25; UTILITY HOLSTEIN 50.00-57.50; CANNERS 44.00-54.00; COMMERCIAL TO GOOD 47.00-54.50; CULL COWS 45.00 & DOWN.  
 VEALS: GOOD TO CHOICE 95.00-122.00, MEDIUM TO GOOD 75.00-90.00.  
 BOB CALVES: 60.00-85.00.  
 HOLSTEIN BULL CALVES: RETURN TO FARM 100-120 LB. 175.00-213.00.  
 HOLSTEIN HEIFER CALVES: RETURN TO FARM 100-120 LB. 110.00-175.00.  
 HOGS: TOP QUALITY 63.50-64.50; HEAVY 62.00-64.25; LIGHT 55.00-61.00.  
 SOWS: 47.00-53.50.  
 EGGS: (PER DOZEN) LARGE .57-.70; MEDIUM .64; SMALL, NONE AVAILABLE.



**Diffenbach's New Holland Auction Center, Ltd.**  
 100 WEST JACKSON ST. • BOX 485 • NEW HOLLAND, PA. 17557  
 PHONE (717) 355-7253 (717) 393-4464 (717) 354-3297

You Can Buy

You Can Sell

**HAY SALE EVERY MONDAY- 10:00 A.M.**

**1990 SPECIAL SALES**

JUNE 1990						
S	M	T	W	T	F	S
						1
3	4	5	6	7	8	9
10	11	12	13	14	15	16
17	18	19	20	21	22	23
24	25	26	27	28	29	30

JULY 1990						
S	M	T	W	T	F	S
1	2	3	4	5	6	7
8	9	10	11	12	13	14
15	16	17	18	19	20	21
22	23	24	25	26	27	28
29	30	31				

AUGUST 1990						
S	M	T	W	T	F	S
			1	2	3	4
5	6	7	8	9	10	11
12	13	14	15	16	17	18
19	20	21	22	23	24	25
26	27	28	29	30	31	

- FRI. JUNE 15 ..... 9:00 A.M. Farm Equipment & Supplies
- SAT. JUNE 30 ..... 10:00 A.M. Bertha Shirk, Paradise. Real Estate, HH Goods & Antiques. (On the premises)
- FRI. JULY 13 ..... 9:00 A.M. Farm Equipment & Supplies
- TUES. & WED., JULY 24 & 25 9:00 A.M. Quilts, Crafts, & Buggies
- SAT. AUG. 11 ..... 9:00 A.M. Elizabeth L. Herr, 1347 Beaver Valley Pike Willow Street, Pa. RE, Antiques & HH Goods (On the premises)
- FRI. AUG. 17 ..... 9:00 A.M. Farm Equipment & Supplies
- TUES. AUG. 28 ..... 6:00 P.M. Guns of all descriptions
- TUES. SEPT. 4 ..... 6:00 P.M. Lawn Mowers & Garden Equipment
- FRI. SEPT. 14 ..... 9:00 A.M. Farm Equipment & Supplies
- TUES. SEPT. 25 ..... 6:00 P.M. Guns of all descriptions
- SAT. OCT. 6 ..... 9:00 A.M. Camp Deer Park Benefit Auction
- FRI. OCT. 12 ..... 9:00 A.M. Farm Equipment & Supplies
- TUES. & WED., OCT. 23 & 24 9:00 A.M. Quilts, Crafts, & Buggies
- FRI. NOV. 9 ..... 9:00 A.M. Farm Equipment & Supplies
- SAT. NOV. 24 ..... 9:00 A.M. Toys, Crafts, Gifts, & Tools

SEPTEMBER 1990						
S	M	T	W	T	F	S
						1
2	3	4	5	6	7	8
9	10	11	12	13	14	15
16	17	18	19	20	21	22
23	24	25	26	27	28	29
30						

OCTOBER 1990						
S	M	T	W	T	F	S
						1
2	3	4	5	6	7	8
9	10	11	12	13	14	15
16	17	18	19	20	21	22
23	24	25	26	27	28	29
30	31					

NOVEMBER 1990						
S	M	T	W	T	F	S
						1
2	3	4	5	6	7	8
9	10	11	12	13	14	15
16	17	18	19	20	21	22
23	24	25	26	27	28	29
30	31					

DECEMBER 1990						
S	M	T	W	T	F	S
						1
2	3	4	5	6	7	8
9	10	11	12	13	14	15
16	17	18	19	20	21	22
23	24	25	26	27	28	29
30	31					

Contact Us For Rates  
 And Dates For Your Sales

**ADD YOUR SALE TO THIS LISTING NOW!**  
 Diffenbachs Aucts. 225L  
 Bonded Licensed Livestock Dealer and Order Buyer

Equipped And Ready  
 To Serve You

SHORT NOTICE  
 HORSE SALE  
 FRIDAY EVE., JUNE 1

**NEW HOLLAND SALES STABLES INC.  
 THE ACTION AUCTION**

REGISTERED HEIFER  
 SALE  
 SATURDAY, JUNE 9

LIVESTOCK IS OUR ONLY BUSINESS

**MONDAY**

SLAUGHTER HOGS

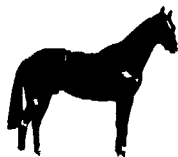


**EARLY BIRD HOG SALE  
 7:30 A.M.**

Sell Your Hogs At New Holland Sales Stables, Inc.  
 See them weighed, sold and pickup your check.

**10:00 AM**

HORSES MULES



**1:30 PM  
 BEEF SALE**



SHEEP



CALVES

**WEDNESDAY**

DAIRY HEIFERS 11:00 AM COW SALE 12:00 NOON COWS BULLS



We have the usual run of 50 to 100 Heifers, all ages.  
 Loads of fresh cows and springers from our regular shippers.  
 Also some local fresh cows and springers.

**1:30 P.M.  
 FEEDER PIG SALE**

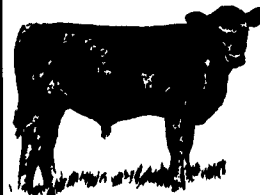


Pigs are accepted after 6:30 A.M. State graded from 8 to 12 Dairy Barn and Feeder Pig Barn are cleaned and disinfected weekly for your protection.

**THURSDAY**

Beef Auction  
 10:00 A.M.

BULLS STEERS BEEF COWS



STOCKERS & FEEDERS

**1:30 P.M.**

SHEEP GOATS CALVES



**NEW HOLLAND SALES STABLES, INC.**

12 Miles East of Lancaster Off Route 23, New Holland, Penna.

MANAGERS  
 Norman & David Kolb - 717-397-5538

Sale Barn Officer Manager  
 Roger Floyd - 717-354-4341

Field Representatives  
 Luke Eberly - 215-267-6608 738-1865  
 Homer Eberly - 215-267-3047

Order Buyer  
 Paul Good - 215-445-6662  
 Feeder Pig Representative  
 Mel Hoover - 717-354-8397