

# Firestone The Leader in The Field



## FRONT TRACTOR TIRES

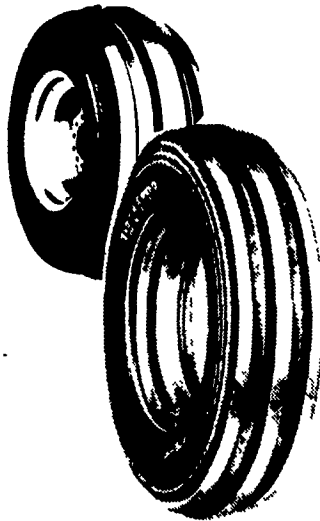
### 3 RIB

|                |         |
|----------------|---------|
| 4.00-15, 4 Ply | \$38.00 |
| 5.00-15, 4 Ply | \$40.00 |
| 7.5L15, 6 Ply  | \$60.00 |
| 5.50-16, 4 Ply | \$44.00 |
| 5.50-16, 6 Ply | \$49.00 |
| 7.50-18, 6 Ply | \$76.00 |
| 4.00-19, 4 Ply | \$44.00 |

### 4 RIB

|                 |          |
|-----------------|----------|
| 9.5L15, 6 Ply   | \$77.00  |
| 9.5L15, 8 Ply   | \$92.00  |
| 11L15, 6 Ply    | \$88.00  |
| 11L15, 8 Ply    | \$92.00  |
| 6.00-16, 4 Ply  | \$44.00  |
| 6.00-16, 6 Ply  | \$48.00  |
| 6.50-16, 6 Ply  | \$52.00  |
| 7.50-16, 6 Ply  | \$65.00  |
| 7.50-16, 8 Ply  | \$71.00  |
| 10.00-16, 6 Ply | \$92.00  |
| 10.00-16, 8 Ply | \$99.00  |
| 11.00-16, 6 Ply | \$110.00 |
| 11.00-16, 8 Ply | \$115.00 |
| 14L16.1, 6 Ply  | \$186.00 |
| 7.50-20, 6 Ply  | \$109.00 |

- Free Shipment In Pairs
- Less \$10 Per Pair!



Champion Guide Grip™

**Specials On These Rear Tractor Tires Now Thru June 30th...**

### RADIAL

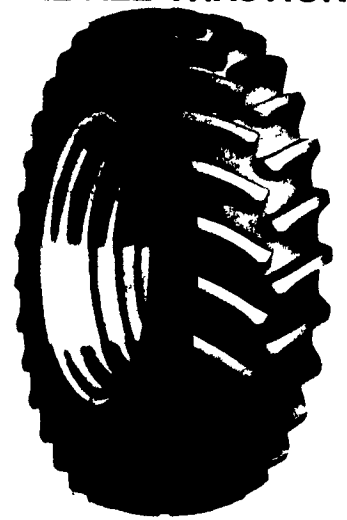
18.4R-38★..... \$495

### BIAS-PLY

15.5-38, 6 Ply..... \$265

18.4-38, 8 Ply..... \$425

## Firestone RADIAL ALL TRACTION 23°



|              |           |
|--------------|-----------|
| 24.5R32★     | \$970.00  |
| 30.5LR32★    | \$1130.00 |
| 18.4R34★     | \$515.00  |
| 20.8R34★     | \$825.00  |
| 23.1R34★     | \$998.00  |
| 16.9R38★     | \$519.00  |
| 18.4R38★     | \$567.00  |
| 18.4R38★ ★   | \$653.00  |
| 20.8R38★     | \$790.00  |
| 20.8R38★ ★   | \$930.00  |
| 18.4R42★     | \$610.00  |
| 18.4R42★ ★   | \$690.00  |
| 18.4R42★ ★ ★ | \$790.00  |
| 20.8R42★     | \$793.00  |

## TRUCK TIRES

### Firestone

#### STEELTEX RADIAL 23°



|            |          |
|------------|----------|
| 21585R16 D | \$115.00 |
| 23585R16 E | \$137.00 |
| 875R16 5 D | \$126.00 |
| 950R16 5 D | \$143.00 |
| 700R15LT D | \$101.00 |
| 750R16LT D | \$124.00 |

### Firestone

#### STEELTEX RADIAL FSR



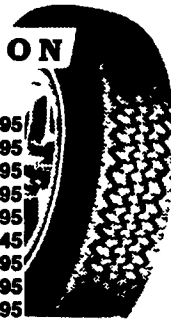
|             |   |          |
|-------------|---|----------|
| LT215/85R16 | D | \$88.00  |
| LT225/75R15 | D | \$83.00  |
| LT235/85R16 | E | \$125.00 |

## PASSENGER TIRES

### Firestone

#### SUPREME ALL-SEASON RADIALS!

|               |         |
|---------------|---------|
| P155/80R13 WW | \$36.95 |
| P165/80R13 WW | \$48.95 |
| P175/80R13 WW | \$50.95 |
| P185/80R13 WW | \$53.95 |
| P185/75R14 WW | \$54.95 |
| P195/75R14 WW | \$57.45 |
| P205/75R14 WW | \$58.95 |
| P205/75R15 WW | \$59.95 |
| P215/75R15 WW | \$63.95 |
| P225/75R15 WW | \$66.45 |
| P255/75R15 WW | \$70.95 |



### SEIBERLING II By Firestone



|            |         |
|------------|---------|
| P155/80R13 | \$29.95 |
| P165/80R13 | \$34.95 |
| P175/80R13 | \$37.95 |
| P185/80R13 | \$40.50 |
| P185/75R14 | \$40.95 |
| P195/75R14 | \$41.95 |
| P205/75R14 | \$44.95 |
| P205/75R15 | \$46.95 |
| P215/75R15 | \$47.95 |
| P225/75R15 | \$49.95 |
| P235/75R15 | \$50.95 |

### FORESTRY SPECIAL

### WIDE TREAD PLY TIRE



|                 |           |
|-----------------|-----------|
| 18.4-26, 10 Ply | \$610.00  |
| 23.1-26, 10 Ply | \$1120.00 |
| 23.1-26, 14 Ply | \$1380.00 |
| 28L26, 10 Ply   | \$1350.00 |
| 28L26, 14 Ply   | \$1650.00 |
| 16.9-30, 10 Ply | \$670.00  |
| 24.5-32, 12 Ply | \$1540.00 |
| 24.5-32, 16 Ply | \$1840.00 |
| 30 5L32, 12 Ply | \$1810.00 |
| 30 5L32, 16 Ply | \$2170.00 |
| 35.5L32, 16 Ply | \$2680.00 |
| 18.4-34, 10 Ply | \$870.00  |

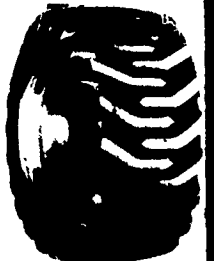
### Firestone TRACTION FIELD & ROAD

|                  |          |
|------------------|----------|
| 9.5-16, 4 Ply    | \$114.00 |
| 18.4-16.1, 6 Ply | \$384.00 |
| 8.3-24, 4 Ply    | \$99.00  |
| 9.5-24, 4 Ply    | \$109.00 |
| 9.5-24, 6 Ply    | \$139.00 |
| 11.2-24, 4 Ply   | \$132.00 |
| 11.2-24, 6 Ply   | \$160.00 |
| 12.4-24, 4 Ply   | \$153.00 |
| 12.4-24, 8 Ply   | \$210.00 |
| 13.6-24, 6 Ply   | \$261.00 |
| 14.9-24, 4 Ply   | \$197.00 |
| 13.6-26, 6 Ply   | \$259.00 |
| 7.50x22.4 Ply    | \$149.00 |
| 12.4-28, 4 Ply   | \$173.00 |
| 13.6-28, 4 Ply   | \$204.00 |
| 13.6-28, 10 Ply  | \$341.00 |
| 14.9-28, 4 Ply   | \$221.00 |
| 14.9-28, 6 Ply   | \$227.00 |
| 16.9-28, 6 Ply   | \$277.00 |
| 18.4-28, 6 Ply   | \$366.00 |
| 16.9-30, 6 Ply   | \$301.00 |
| 18.4-30, 6 Ply   | \$343.00 |
| 23.1-30, 8 Ply   | \$743.00 |
| 16.9-34, 6 Ply   | \$331.00 |
| 18.4-34, 6 Ply   | \$375.00 |
| 18.4-34, 8 Ply   | \$418.00 |
| 20.8-34, 6 Ply   | \$590.00 |
| 20.8-34, 8 Ply   | \$645.00 |
| 9.5-38, 4 Ply    | \$209.00 |
| 13.6-38, 4 Ply   | \$225.00 |
| 13.6-38, 6 Ply   | \$255.00 |
| 14.9-38, 6 Ply   | \$277.00 |
| 15.5-38, 6 Ply   | \$284.00 |
| 15.5-38, 8 Ply   | \$338.00 |
| 16.9-38, 6 Ply   | \$361.00 |
| 18.4-38, 6 Ply   | \$418.00 |
| 18.4-38, 8 Ply   | \$450.00 |
| 20.8-38, 8 Ply   | \$625.00 |
| 20.8-38, 10 Ply  | \$725.00 |
| 9.5-42, 6 Ply    | \$248.00 |
| 12.4-42, 6 Ply   | \$314.00 |
| 11.2-28, 4 Ply   | \$153.00 |
| 9.5-32, 4 Ply    | \$198.00 |
| 11.2-36, 4 Ply   | \$172.00 |
| 12.4-36, 4 Ply   | \$221.00 |
| 12.4-36, 10 Ply  | \$341.00 |
| 13.6-36, 4 Ply   | \$249.00 |
| 11.2-38, 4 Ply   | \$178.00 |
| 12.4-38, 4 Ply   | \$210.00 |
| 12.4-38, 6 Ply   | \$260.00 |

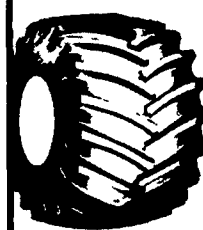
## Firestone SKID LOADER

27-850x15 4 PLY

Only **\$54.95** SHIPPED FREE!



### FIRESTONE POWER IMPLEMENT TIRE



|                |          |
|----------------|----------|
| 125Lx15 8 Ply  | \$138.00 |
| 12.5L20 4 Ply  | \$165.00 |
| 1350x161 6 Ply | \$188.00 |
| 165Lx161 6 Ply | \$242.00 |
| 500x15         | \$45.00  |
| 760x15 6 Ply   | \$75.00  |

## Firestone RADIAL ALL TRACTION FWD™



|              |          |
|--------------|----------|
| 16.9R24★ ★   | \$512.00 |
| 14.9R26★ ★ ★ | \$464.00 |
| 16.9R26★ ★   | \$552.00 |
| 18.4R26★ ★   | \$622.00 |
| 13.6R28★ ★ ★ | \$392.00 |
| 14.9R28★ ★ ★ | \$479.00 |
| 16.9R28★ ★   | \$533.00 |
| 14.9R30★ ★ ★ | \$566.00 |

Central Warehouse  
Mt. Joy, Pa  
717-653-1260

Serving Farmers In  
Penn., New Jersey, Northern  
Maryland and Delaware

Branch Warehouse  
Northumberland, Pa  
717-733-3974

## MUMMAU TIRE SERVICE CENTER

For Service And Out-of-State, Call: 717-653-1260  
In Pa., Call Toll Free: 1-800-222-1729

