

Public Auction Register

Closing Date Monday 5:00 P.M.
of each week's publication

OCTOBER

WED. OCT. 3, Annual Dairy Show and Sale, Show at 9:30AM and Sale at 12 Noon, at the Belleville Livestock Mkt., Belleville, PA, Mark Glick, Auct.

SAT. OCT. 6 - 9AM, Camp Deer Park Benefit Auction, Diefenbach's New Holland Auction Center, Ltd., 100 West Jackson St., New Holland, Pa. 17557. Diefenbach's Aucts.

FRI. OCT. 12, State Graded Feeder Pig Sale, Exit 12 East off I-81, Carlisle Livestock Market, 717-249-4511.

FRI. OCT. 12 - 9 AM, Farm Equipment & Supplies, Diefenbach's New Holland Auction Center, Ltd., 100 West Jackson St., New Holland, Pa. 17557. Diefenbach's Aucts.

TUES. OCT. 23 and WED. OCT. 24 - 9AM both days, Quilts, Crafts, & Buggies, Diefenbach's New Holland

Auction Center, Ltd., 100 West Jackson St., New Holland, Pa. 17557. Diefenbach's Aucts.

FRI. OCT. 26, State Graded Feeder Pig Sale, Exit 12 East off I-81, Carlisle Livestock Market 717-249-4511.

SAT. OCT. 27, Support for Prison Ministries Annual Benefit Auction, at Farmersville Auction, Glenn Hoover, Chairman, Local Auctioneers.

WED. OCT. 31 - 9AM, Dairy Show & Sale, New Holland Sales Stables, Inc., New Holland, PA.

NOVEMBER

FRI. NOV. 2 - 6PM, 300-400 Heifers, All Sizes, located at the Belleville

Livestock Mkt., Belleville, PA, Mark Glick, Auct.

FRI. NOV. 9, State Graded Feeder Pig Sale, Exit 12 East off I-81, Carlisle Livestock Market, 717-249-4511.

FRI. NOV. 9 - 9AM, Farm Equipment & Supplies, Diefenbach's New Holland Auction Center, Ltd., 100 West Jackson St., New Holland, Pa. 17557. Diefenbach's Aucts.

FRI. NOV. 23, State Graded Feeder Pig Sale, Exit 12 East off I-81, Carlisle Livestock Market, 717-249-4511.

SAT. NOV. 24 - 9AM, Toys, Crafts, Gifts, & Tools, Diefenbach's New Holland Auction Center, Ltd., 100

West Jackson St., New Holland, Pa. 17557. Diefenbach's Aucts.

December

FRI. DEC. 14, State Graded Feeder Pig Sale,

Exit 12 East off I-81, Carlisle Livestock Market, 717-249-4511.

FRI. DEC. 28, State Graded Feeder Pig Sale, Exit 12 East off I-81, Carlisle Livestock Market, 717-249-4511.

SALE EVERY TUESDAY

Graded Sale
1st Tuesday each month
2 P.M.
Horse Auction
2nd Saturday each month
1 P.M.

FAUQUIER LIVESTOCK EXCHANGE

Marshall, Va.
703-364-1566

DEALER IN ALL KINDS OF LIVESTOCK

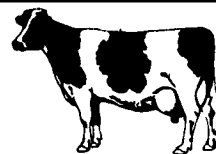
Also Crippled & Down Cattle

MARLIN S. IRWIN

Quarryville, PA
PH: 717-786-3016

Dairy and Livestock Sales

NEW HOLLAND SALES STABLES, INC.



Located 12 Miles East of Lancaster, just off Rt. 23, New Holland, Pa.

SPECIAL DAIRY SALE CONSIGNMENTS For

WEDNESDAY, JUNE 6, 1990
Helper Sale Starts At 11:00 A.M.
Fresh Cows & Springers At 12:00 Noon

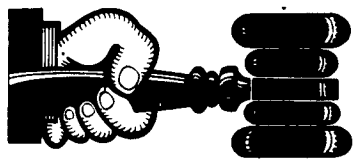
1 Load Top Canadian cows and 1st calf heifers. Some with records, fresh and springers, Purebreds and Grades. This is a top load of cows and 1st calf heifers. Consigned by Roy Johncox.

Also Selling

- * 1 load fresh and springer cows consigned by Norman and David Kolb.
- * 1 load fresh and springer cows consigned by Bob Kennedy.
- * 1 load fresh and springer cows consigned by Merle Brenneman.
- * 1 load fresh and springer cows consigned by Marvin Eshleman.
- * 1 load fresh and springer cows consigned by Raymond Smucker.
- * 1 load fresh cows consigned by Dale Hostetter.
- * 1 load fresh cows consigned by Albert Albright.

PLUS MANY MORE CONSIGNMENTS For More Information Contact:

Norman Kolb, Pres. 717-397-5538 David Kolb, V. Pres. 61L Barn Phone 717-354-4341



AUCTIONEER'S DIRECTORY

NOTICE

To assure that your Public Sale appears in the Public Sale Section we must have your advertisement by 5 P.M. Tuesday of each week's publication.

DWIGHT D. MILLER AUCTIONEER QUALITY SERVICE

RD#2 Box 2716
Bethel, Pa.
(717) 933-5736



ST. GEORGE'S AUTO AUCTION

Public & Dealers
Now Open

TUESDAY & THURSDAY
6:30 P.M.
302-836-3900 RT. 72 & 13 BEAR, DELAWARE

HORNING Farm Agency, Inc.

Alvin Horning Bus. (215) 286-5183
Merle Eberly Res. (215) 775-3745
Alpheus L. Ruth..... Res. (215) 944-7543
Real Estate • Auctions • Appraisals



ROGERS COMMUNITY AUCTION INC.

Located 8 Miles East Of Lisbon, Ohio Or One Mile West Of Rogers, Ohio On St. Rt. 154.

FRIDAYS

Produce, Egg, Miscellaneous Auction Starts At 6 P.M.

Poultry Auctions Start At 7 P.M.
Doors Open At 7:30 A.M.
To Accept Consignments

Open Air Market All Day And Evening

Doors Open At 7:30 A.M. To Rent Market Spaces. Over 2.5 Miles Of Outside Concessionaries And 30,000 Sq. Ft. Under Roof.

WEDNESDAYS

Farm Machinery Consignment Auction

The FIRST WEDNESDAY EVENING OF EACH MONTH at 6 P.M. sharp.

We are open the preceding Tuesday of each sale day to check in consignments from 8 A.M. to 8 P.M. Handling farm machinery, lawn and garden equipment, tools, fire wood, cut lumber and related miscellaneous items. Five auctioneers operating simulatenously.

Hay And Straw Grain

EVERY WEDNESDAY selling truck

load lots by the bale or ton starting at 1 P.M.

Barn Opens at 8 A.M. to Consign
Jim and Ken Baer

Auctioneers and Managers
Phone (216) 227-3233 or (216) 227-3236
"Sales Every Week Since 1955"

KREIDER & KLINE AUCTIONEERS

COMPLETE PROFESSIONAL AUCTION SERVICE
REAL ESTATE — FARMS & RESIDENTIAL
PERSONAL PROPERTY — ANTIQUES —
FARM STOCK SALES — LIQUIDATIONS

RANDAL V. KLINE LLOYD H. KREIDER
AUCTIONEER-REALTOR AUCTIONEER
717-733-1006 717-786-3394

ROY E. GOOD, JR.
AUCTIONEER
215-445-4309

ELTON HORNING FARM AGENCY



REAL ESTATE - AUCTIONEER
MORTGAGE BROKER - APPRAISALS

RON & BOB BARD
717-786-1146 — 717-786-4246

Auctioneer:

Steve Petersheim:
Steve Jr.



COMPLETE AUCTION SERVICE

Antiques
Household Goods
Farm Equipment
Real Estate

Take Note - Our New Phone Number
215-593-2828

PUBLIC AUCTION THURSDAY JUNE 21, 1990

ROY E. NOLT ESTATE DISPERSAL

Richland, PA Lebanon County

112 REGISTERED & GRADE HOLSTEINS

57 COWS 2 YEARLING BULLS 53 HEIFERS

High Herd for Milk Lebanon Co. 1988 & 1989
High Herd for Protein Lebanon Co. 1989

Current RHA 60.4 Cows 23,385 3.6 837 3.2 747
Interstate Tested Catalogs Sale in Tent Preg. Exam
Daus. of Mark, Bell, Melvin, Command, Memorial
Watch future issues for more details.

Sale Manager's Note: This tremendous herd of high-producing Holsteins is being dispersed because of the untimely death of Mr. Nolt. Do not miss this opportunity.

Owners:
MRS. ROY NOLT & FAMILY
R.D. 1
Richland, PA

Auctioneer: **HARRY H. BACHMAN**
138 College Ave.
Annville, PA 17003
AU-00033-L 717-867-1809

Pedigrees: **Dale L. Hoover**
517 Horseshoe Pike
Lebanon, PA 17042
717-867-2489