

AVAILABLE

Chester Co. farmer leaving area. Interested in disposing of two pole barns (Approx. 100'x50' ea) in good condition, cow barn (approx. 32'x120'), three silos (approx. 75' ea.) and milking barn (approx. 35'x120'). Anyone interested in acquiring & or removing these buildings please contact J. Koegel at
1-800-445-6637
 between 8 AM & 5 PM M-F

WAIT!

Having roofing problems? Considering a new roof in the next 3-5 years? Before investing big dollars in an expensive new roof consider **Poxy Coat II!**
Poxy Coat II is good for most roofs.
 - extremely flexible for long life
 - is heat resistant up to 1000°.
 - resists acid rain
 - seals and protects
 - comes in seven colors, plus black and white
 - a fraction of the cost of a new roof.

For more information and a free estimate and consultation on coating your roof with **Poxy Coat II** contact:
 Paul Brosey at (717) 426-3833 or Steve Bowman at (717) 684-8642

Paul Brosey Contracting also does painting, barn restoration and roof replacement.

★ FACE TO FACE SERVICE!

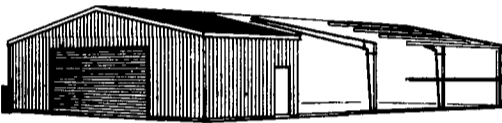
No Risky Phone Sales!



ATLANTIC BUILDING SYSTEMS, INC.

US: 800-431-1338 NY: 800-942-1234

FACTORY DIRECT ALL STEEL BUILDINGS Any Size



MANUFACTURED IN MYERSTOWN, PA (25 miles east of Harrisburg)

Erected by our crew Or Material only
 Delivered on our trucks
717-866-2319
215-643-5022

MILLER

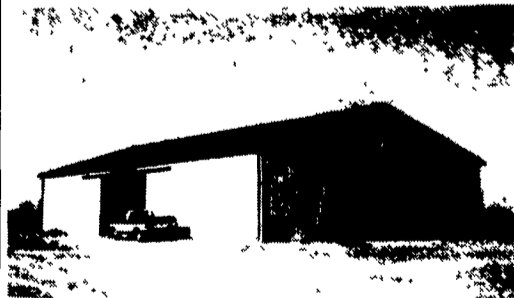
BUILDING SYSTEMS

Sales and Engineering

P.O. Box 482
 809 North Bethlehem Pike
 Spring House, PA 19477

54'x104'x15'
\$26,528⁰⁰

Tax Included - Additional charges outside 50 mile radius



Price Includes

- * 2 24'x15' Sliding Doors one on each end
- * 1 22'x13'6" Sliding Door on side
- * 1 3'0"x6'8" Entrance Door
- * 14 10' Skylights
- * 12" Overhang All Around Gables & Eaves
- * Trusses 4' on Center for More Snow Load
- * Spouting & Down Spouts

Call Or Write
Stoltzfus Builders

50 North View Rd., Lititz, PA 17543
 24 Hr. Service
717-664-3540

POLE BUILDINGS ERECTED

24x32x8.....	\$3,562.10
30x56x8.....	\$6,525.46
28x32x10.....	\$4,079.38
30x40x10.....	\$5,189.86
32x40x10.....	\$6,600.00
32x64x10.....	\$9,346.94
40x64x10.....	\$10,074.80
40x64x12.....	\$10,641.12
40x88x12.....	\$13,751.15

All Prices Include Taxes,
 29 Gauge Painted Galvanized Steel, (Fabral), Trusses Spaced 4' On Center For More Snow Load. All Roofing And Siding Is Screwed On. Additional Charges Outside 50 Mi. Radius
 Call or Write
Stoltzfus Builders
 50 North View Rd., Lititz, PA 17543
717-664-3540
 24 Hour Services



P.O. Box P-50
 Stevens, PA 17578
 215-267-4911

Located Along
 Rt. 272 Just South
 Of PA Turnpike
 Exit 21
 1-800-537-0580

POST FRAME BUILDING SUPPLIES

★ Check Our Low Prices! ★

- For The Farmer And The Contractor... Do-it-Yourself Package Buildings Available In Many Sizes!
- Large Stock Of 4x6 & 6x6 Treated Posts And All Sizes Of Treated Lumber
- Cannon Ball Sliding Doors And Equipment
- Framing Lumber And Trusses



ALUMAX
 BUILDING PRODUCTS



• Painted 29 Ga. Steel By Alumax-PowerPanel And McElroy Metals!



McELROY METAL, INC.

Pole Buildings, Garages

for livestock or equipment. We also install steel roofing on your existing building.

For free estimate call
Hess Quality Contracting
717/225-1473 anytime

MUSSER & ASSOCIATES, INC.

RD #2
 Box 2881
 East Earl, PA
 17519



Hours:
 Mon.-Fri.
 7-5
 (717) 354-7561

Sales

Come See What We Have!

■ Round Roll NAPCO Coll Stock - White, Brown & Matching Colors.

■ Trusses Made To Order



■ Nails - Pole Barn, Commons, Painted Siding Nails

■ Barndoor Track

■ Screws

■ NAPCO Vinyl Siding

■ Insulation-Fiberglass & Rigid, Blown-In Insulation



■ Walk-In Doors & Overhead Doors

■ Concrete Mix

■ NAPCO Vinyl Replacement Windows

■ Sno-Jacs

■ Treated Lumber

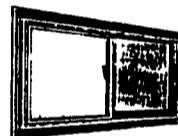
■ Painted Roofing & Siding:



■ Spouting

■ HAYFIELD Windows

WHEELING CORRUGATING COMPANY



ALUMAX BUILDING PRODUCTS



■ Aluminum Ceiling Material

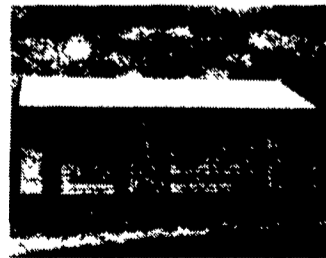
AMERICAN BUILDING COMPONENTS



CONESTOGA BUILDING SUPPLY

Post Frame Building & Supplies

- * Complete Building Packages Available
- * Agricultural * Commercial * Horse Barns
- * Residential Garages



* IN STOCK: Trusses, Shingles, Horse Stall Kits, Doors, Windows, Treated Lumber...

3 Major Brands Of Steel As Low As \$32/Sq.

For Your Free Estimate Call:
1-800-544-9464 or 717-354-2613

Conestoga Building Supply

New Holland, PA

We Deliver