


# Virginia



## Cattle & Hogs

### Virginia Weekly

Richmond, Va.

Wednesday, May 23, 1990

WEEKLY REVIEW IN VIRGINIA MARKETS IN REVIEW; MAY 17-23, 1990. FEEDER STEERS AND HEIFERS IN VIRGINIA WERE UNEVEN \$5.00 LOWER TO \$3.00 HIGHER, WHILE MIDWEST PRICES WERE STEADY TO \$6.00 LOWER.

SLAUGHTER STEERS AND HEIFERS IN VIRGINIA WERE STEADY TO \$1.00 LOWER AS MIDWEST PRICES WERE STEADY TO \$1.25 LOWER.

COWS AND BULLS IN VIRGINIA WERE MIXED, \$1.50 LOWER TO \$4.00 HIGHER AS MIDWEST PRICES WERE STEADY TO \$2.50 LOWER. BEEF PRODUCTION WAS LESS THAN 1% ABOVE A WEEK AGO AND 3% ABOVE A YEAR AGO. AVERAGE DRESSED WEIGHTS WERE 7 POUNDS HEAVIER THAN A YEAR AGO.

VEAL AND CALF PRICES IN VIRGINIA WERE \$6.00-10.00 LOWER AS MIDWEST PRICES WERE MOSTLY STEADY. VEAL AND CALF PRODUCTION WAS LESS THAN 1% ABOVE A WEEK AGO BUT 16% BELOW A YEAR AGO. AVERAGE DRESSED WEIGHTS WERE 11 POUNDS LIGHTER THAN A YEAR AGO.

LAMB PRICES IN VIRGINIA WERE

25 CENT LOWER TO \$4.00 HIGHER AS MIDWEST PRICES WERE \$9.00-12.00 LOWER. LAMB PRODUCTION WAS 3% BELOW A WEEK AGO AND 5% ABOVE A YEAR AGO. AVERAGE DRESSED WEIGHTS WERE THE SAME AS LAST YEAR.

SLAUGHTER HOG PRICES IN VIRGINIA WERE \$2.00 HIGHER AS MIDWEST PRICES WERE \$1.75-2.00 HIGHER. FRESH PORK PRICES WERE STEADY TO \$8.00 HIGHER. HOG PRODUCTION WAS 3% BELOW A WEEK AGO AND 6% BELOW A YEAR AGO. AVERAGE DRESSED WEIGHTS WERE 1 POUND HEAVIER THAN A YEAR AGO.

THE VIRGINIA DIRECT HOG MARKET MAY 17-23, 1990 RECEIPTS FOR THE DIRECT HOG MARKET IN VIRGINIA FOR THE PERIOD TOTALLED 4,806 HEAD COMPARED TO LAST WEEK 11,578 HEAD. THE SOUTHEAST VIRGINIA HOG MARKET CLOSED \$2.00 HIGHER COMPARED TO LAST WEDNESDAY'S TRADING WITH BARROWS AND GILTS: COUNTRY POINTS LOCAL PLANT DELIVERED (30 MILE RADIUS) US 1-3 210-250 LBS

63.50-63.75 64.00-64.50 FEW 63.50 US 1-2 200-210 LBS 62.00-62.50 US 1-3 250-260 LBS 62.00-62.50 US 2-3 260-270 LBS 60.00-60.50 US 2-4 270-300 LBS 56.00-58.50 SOWS \$38.00-54.00 AND BOARS \$34.00-48.20 VALLEY AND NORTHERN VIRGINIA HOGS; 910 HEAD FOR THE PERIOD. US 1-3 210-250 LBS \$63.75-64.50.

SLAUGHTER STEERS AND HEIFERS 0%; SLAUGHTER COWS 18% SLAUGHTER BULLS 3%; SLAUGHTER CALVES AND VEALERS 1%; FEEDER CATTLE UNDER 600 LBS 61% OVER 600 LBS 17%.

PRICE RANGES FOR VIRGINIA WEEKLY AUCTIONS SLAUGHTER CATTLE STEERS: NO QUOTES THIS WEEK HEIFERS; CHOICE 2-3 950-1100 LBS 69.50-74.00 CHOICE 2-3 1100 LBS & OVER 73.00-77.00 UTILITY & COMMERCIAL COWS 45.00-58.50 BULLS - 1-2 900-1300 LBS 60.00-71.00 1-2 1300-1600 LBS 60.25-71.75 1-2 1600 LBS & OVER 62.00-74.

75 SLAUGHTER CALVES AND VEALERS VEALERS - HIGH CHOICE & PRIME 100-250 LBS 90.00-105.00 GOOD AND CHOICE 100-250 LBS --- CALVES - GOOD AND CHOICE 250-500 LBS 78.00-90.25 SLAUGHTER LAMBS HIGH CHOICE & PRIME 95-125 LBS SPRING 61.00-66.25; BUCKS 60.75 SLAUGHTER HOGS US 1-3 200-250 LBS 55.25-63.85 SOWS US 1-3 300-500 LBS 43.00-53.50 500 LBS & OVER 47.00-53.50.

FEEDER CATTLE STEERS; MEDIUM 1 HEIFERS; MEDIUM 1 200-300 LBS 106.00-120.00 300-400 LBS 88.00-102.00 300-400 LBS 100.00-115.00 400-500 LBS 83.00-100.00 400-500 LBS 95.00-111.00 500-600 LBS 77.00-90.00 500-600 LBS 96.50-109.00 FEW 87.00 600-700 LBS 76.00-85.00 600-700 LBS 83.25-95.00 700-800 LBS 73.00-78.00 700-800 LBS 77.00-90.00 800-900 LBS --- 800-900 LBS 73.60-82.00.

### Northern Virginia Area Livestock Summary

Orange, Va.

Wednesday, May 23, 1990

ALL TRENDS COMPARED TO LAST WEDNESDAY SLAUGHTER HOGS 13 HEAD - NO TRENDS REPORTED. BARROWS AND GILTS US 1-3 200-250 LBS 60.00.

SLAUGHTER CATTLE 105 HEAD - NO TRENDS REPORTED.

SLAUGHTER STEERS AND HEIFERS 9 HEAD STEERS; SELECT 2-3 900-1100 LBS 65.00-67.00 SELECT 2-3 1100 LBS & OVER 70.50 HEIFERS; SELECT 2-3 850-1100 LBS 66.50-69.00.

SLAUGHTER COWS 83 HEAD CUTTER & BNG.UT. 1-3 47.00-52.00 BRKG.UT. & COMM. 2-4 47.50-56.00 CANNER & LOW CUTTER 1-2.

SLAUGHTER BULLS 9 HEAD - 1-2 900-1300 LBS --- 1-2 1300-1600 LBS 67.50 1-2 1600 LBS & OVER 67.00-75.50.

SLAUGHTER CALVES AND VEALERS 6 HEAD VEALERS - HIGH CHOICE AND PRIME 200-350 LBS 100.00-108.00.

FEEDER CATTLE 295 HEAD - NO TRENDS REPORTED. STEERS; MEDIUM 1 MED.&LARGE 2 200-300 --- 112.00 300-400 --- 99.00-106.50 400-500 99.00-103.00 90.00-100.00 500-600 94.50-99.00 --- 600-700 86.75 --- 700-800 75.00 --- 800-900 74.25 --- HOLSTEIN STEERS; MED.&LARGE 1-2 300-500 LBS 83.50-87.00.

HEIFERS; MEDIUM 1 SMALL 1 MED.&LARGE 2 200-300 --- 89.00-94.50 300-400 91.00-99.00 85.50-89.00 81.50-91.50 400-500 88.00-93.50 --- 76.50-83.00 500-600 84.50-90.00 --- 600-700 70.00-76.50 --- FEEDER BULLS; MED. 1 200-300 LBS 118.00 300-400 LBS 100.00 400-500 LBS 80.00-85.00 500-600 LBS 67.50-70.50 COWS WITH CALVES AT SIDE 6 PAIR; M&L-1, 4-8 YR OLD 900-1100 LBS WITH CALVES 100-275 LBS \$690.00-870.00 PER PAIR. BABY CALVES RETURNED TO FARMS 14 HEAD NEWBORN TO 4 WK OLD 65.00-160.00 PER HEAD. OVER 100 LBS 142.50-175.00 PER CWT.

### Southwest Virginia Area Livestock Summary

Tuesday, May 22, 1990

Wytheville, Va.

ALL TRENDS COMPARED TO LAST TUESDAY.

SLAUGHTER HOGS 1 HEAD - NO TRENDS REPORTED. BARROWS AND GILTS US 1-3 200-250 LBS --- US 2-4 250-300 LBS --- US 1-3 180-200 LBS --- SOWS US 1-3 500 LBS & OVER 51.25.

SLAUGHTER CATTLE 55 HEAD - NO TRENDS REPORTED. SLAUGHTER COWS 51 HEAD CUTTER & BNG.UT. 1-3 49.00-54.00 BRKG.UT. & COMM. 2-4 50.00-55.25 CANNER & LOW CUTTER 1-2 42.00-48.25.

SLAUGHTER BULLS 4 HEAD; 1-2 900-1300 LBS 67.50 1-2 1300-1600 LBS 70.50 1-2 1600 LBS & OVER 70.00-70.25.

LAMBS TOTAL 48 HEAD - NO TRENDS REPORTED. SLAUGHTER LAMBS 48 HEAD HIGH CHOICE AND PRIME 95-125 LBS SPRING 61.00 CHOICE 85-125 LBS SPRING 59.00 EWES AND RAMS 10 HEAD SLAUGHTER EWES ALL GRADES 12.00-16.00 6 HEAD GOATS \$24.00-47.00 PER HEAD.

FEEDER CATTLE 163 HEAD - NO TRENDS REPORTED STEERS; MEDIUM 1 SMALL 1 MED.&LARGE 2 200-300 99.00-105.00 --- --- 300-400 95.00-96.00 --- 91.00-93.00 HOLSTEIN STEERS; MED.&LARGE 1-2 300-500 LBS 96.00-104.00; 500-700 LBS --- 700-900 LBS --- ; 900-1100 LBS --- 1100 & OVER 59.00.

HEIFERS; MEDIUM 1 LARGE 1 SMALL 1 MED.&LARGE 2 200-300 95.00-96.00 --- --- 300-400 90.00-94.00 --- --- 85.00-92.00 400-500 90.00-95.50 --- --- 84.00 500-600 --- --- 79.00-80.00 600-700 82.50 --- --- 700-800 73.00 --- --- FEEDER BULLS; MED. 1 MED.&LARGE 2 200-300 LBS 99.00-101.00 --- 300-400 LBS 90.00-96.00 --- 400-500 LBS --- 85.00-91.00 500-600 LBS 84.00-85.00.

COWS WITH CALVES AT SIDE 5 PAIR M&L-1, 5-8 YRS OLD 900-1100 LBS WITH CALVES 100-275 LBS 700.00-820.00 PER PAIR.

BABY CALVES RETURNED TO FARMS 38 HEAD NEWBORN TO 4 WK OLD 80.00-160.00, MOSTLY 100.00-155.00 PER HEAD.

## CRIPPLED AND DISABLED COWS, STEERS & BULLS

Slaughter Under USDA Inspection

FREE CALL

1-800-234-COWS (2697)

215-286-9400

Wayne Taylor

Lebanon, Berks, Lancaster & Chester Co.

## FOR SALE Wood Shavings & Sawdust

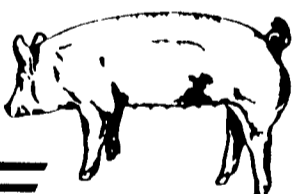
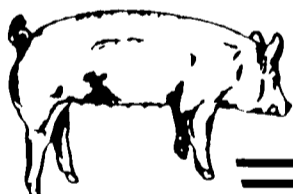
- \* Delivered To Your Farm
- \* Excellent Dairy Bedding
- \* Economical
- \* Year Around Supply

Call For Price

J.D. Martin inc.

Lancaster, PA

717-898-5290

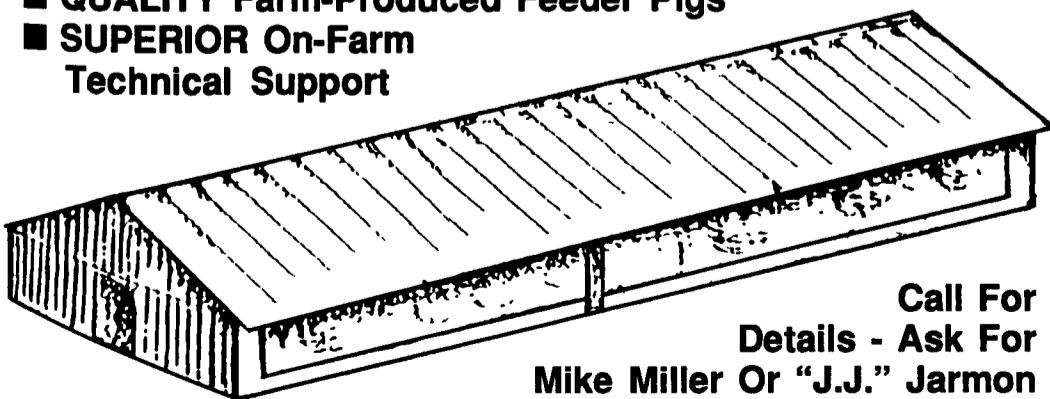


## HOG CONTRACTS AVAILABLE!

An Opportunity For People Who Are Capable Of Managing A New 1,000-2,000 Head Finishing Facility

### BENEFITS INCLUDE:

- POSITIVE Cash Flow & Depreciation Write-Offs
- MINIMAL Labor & Flexible Hours
- QUALITY Farm-Produced Feeder Pigs
- SUPERIOR On-Farm Technical Support



Call For Details - Ask For Mike Miller Or "J.J." Jarmon


PA Toll Free

Local

1-800-468-5524

(717) 367-1525

419 West High St., Elizabethtown, PA 17022



## WORLD CHAMPIONSHIP RODEO

(Rain or Shine)

### MEMORIAL DAY

MON., MAY 28th - 2 P.M. & 7 P.M.

### BUCK MOTOR SPORTS PARK

Just 10 Miles South of Lancaster On Rt. 272  
Save \$1.00 on Advance Ticket Bought By 5/27 At

- Leather Attic Ltd-Park City
- Cape Horn Corner-Red Lion
- Mapleholo Farm Dairy-Quarryville
- Deerkin Leather-Intercourse

**\$1,000.00 REWARD to the Man Who Can Ride Buffalo Bill — The Meanest Beast In The East!**

## Farm Crest Feeds

### Contracts Being Offered For...

New Farrow To Finish Units  
Preferrably 300-500 Sows. Also Interested In New And Existing Finishing Floor To Be Run "All-In-All Out"

### We Supply

- Cash Flow Information
- Professional Service Personnel
- Quality Genetics
- Producer Incentive Programs

Become a part of our Planned Growth!  
Call now to discuss this opportunity!

717-626-0331

or

1-800-432-3040