

Morrisons Cove Livestock

Martinsburg, Pa.
May 21, 1990

Report supplied by auction
CATTLE 208. STEERS: H CHOICE & PRIME 73.50-78.50, CHOICE 70.00-73.25, GOOD 64.00-69.50, STANDARD 59.50-64.00. HEIFERS: 70.00-73.50; GOOD 59.50-68.00.

COWS: UTILITY & COMMERCIAL 55.00-60.25; CUTTERS 52.00-56.75, CANNER & LOW CUTTER 44.50-51.75.

BULLOCKS: GOOD & CHOICE 63.00-70.50.

BULLS: YIELD GRADE NO. 1 62.00-70.00.

FEEDER CATTLE: STEERS 68.00-106.00, BULLS 65.00-91.50; HEIFERS 64.50-86.50.

CALVES 221. PRIME 115.00-122.50; CHOICE 102.00-112.00, GOOD 92.00-101.00, STANDARD & GOOD 82.50-91.00, 90-110 LBS. 84.50-102.00, 65-90 LBS. 75.00-92.50, HOLSTEIN BULLS 90-130 LBS. 160.00-210.00, HOLSTEIN HEIFERS 90-130 LBS. 122.00-178.00.

HOGS 154. US NO. 1-2 63.00-64.75, US NO. 1-3 60.00-62.50.

SOWS: US NO. 1-3 48.50-55.00.

BOARS 48.00-49.50. FEEDER PIGS 35. US NO. 1-3 20-35 LBS. 22.50-44.50 PER HEAD, NO. 1-3 35-50 LBS. 46.00-55.00 PER HEAD.

SHEEP 21. CHOICE 70.00-73.50; GOOD 65.00-69.00; SLAUGHTER EWES 15.00-44.50.

GOATS: 28.00-52.00 PER HEAD.

10 LOADS OF HAY, 54.00-135.00.

1 LOAD OF STRAW, 61.00.

1 LOAD OF EAR CORN, 65.00.



Diffenbach's New Holland Auction Center, Ltd.
100 WEST JACKSON ST. • BOX 485 • NEW HOLLAND, PA. 17557
PHONE (717) 355-7253 (717) 393-4464 (717) 354-3297

You Can Buy

You Can Sell

HAY SALE EVERY MONDAY- 10:00 A.M.

1990 SPECIAL SALES

JUNE 1990						
S	M	T	W	T	F	S
-	-	-	-	-	1	2
3	4	5	6	7	8	9
10	11	12	13	14	15	16
17	18	19	20	21	22	23
24	25	26	27	28	29	30

JULY 1990						
S	M	T	W	T	F	S
1	2	3	4	5	6	7
8	9	10	11	12	13	14
15	16	17	18	19	20	21
22	23	24	25	26	27	28
29	30	31	-	-	-	-

AUGUST 1990						
S	M	T	W	T	F	S
-	-	-	1	2	3	4
5	6	7	8	9	10	11
12	13	14	15	16	17	18
19	20	21	22	23	24	25
26	27	28	29	30	31	-

SAT. JUNE 2..... 9:00 A.M. Consignment Auction Antique Furniture.
FRI. JUNE 15..... 9:00 A.M. Farm Equipment & Supplies
SAT. JUNE 30..... 10:00 A.M. Bertha Shirk, Paradise. Real Estate, HH Goods & Antiques. (On the premises)

FRI. JULY 13..... 9:00 A.M. Farm Equipment & Supplies
TUES. & WED., JULY 24 & 25 9:00 A.M. Quilts, Crafts, & Buggies

FRI. AUG. 17..... 9:00 A.M. Farm Equipment & Supplies
TUES. AUG. 28..... 6:00 P.M. Guns of all descriptions

TUES. SEPT. 4..... 6:00 P.M. Lawn Mowers & Garden Equipment
FRI. SEPT. 14..... 9:00 A.M. Farm Equipment & Supplies
TUES. SEPT. 25..... 6:00 P.M. Guns of all descriptions

SAT. OCT. 6..... 9:00 A.M. Camp Deer Park Benefit Auction
FRI. OCT. 12..... 9:00 A.M. Farm Equipment & Supplies
TUES. & WED., OCT. 23 & 24 9:00 A.M. Quilts, Crafts, & Buggies

FRI. NOV. 9..... 9:00 A.M. Farm Equipment & Supplies
SAT. NOV. 24..... 9:00 A.M. Toys, Crafts, Gifts, & Tools

SEPTEMBER 1990						
S	M	T	W	T	F	S
-	-	-	-	-	-	1
2	3	4	5	6	7	8
9	10	11	12	13	14	15
16	17	18	19	20	21	22
23	24	25	26	27	28	29
30	-	-	-	-	-	-

OCTOBER 1990						
S	M	T	W	T	F	S
-	1	2	3	4	5	6
7	8	9	10	11	12	13
14	15	16	17	18	19	20
21	22	23	24	25	26	27
28	29	30	31	-	-	-

NOVEMBER 1990						
S	M	T	W	T	F	S
-	-	-	-	1	2	3
4	5	6	7	8	9	10
11	12	13	14	15	16	17
18	19	20	21	22	23	24
25	26	27	28	29	30	-

DECEMBER 1990						
S	M	T	W	T	F	S
-	-	-	-	-	-	1
2	3	4	5	6	7	8
9	10	11	12	13	14	15
16	17	18	19	20	21	22
23	24	25	26	27	28	29
30	31	-	-	-	-	-

Contact Us For Rates
And Dates For Your Sales

ADD YOUR SALE TO THIS LISTING NOW!
Diffenbachs Aucts. 225L
Bonded Licensed Livestock Dealer and Order Buyer

Equipped And Ready
To Serve You

SHORT NOTICE
HORSE SALE
FRIDAY EVE., JUNE 1

**NEW HOLLAND SALES STABLES INC.
THE ACTION AUCTION**

REGISTERED HEIFER
SALE
SATURDAY, JUNE 9

LIVESTOCK IS OUR ONLY BUSINESS

MONDAY

SLAUGHTER HOGS

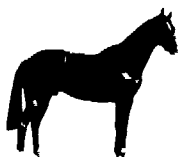


EARLY BIRD HOG SALE
7:30 A.M.

Sell Your Hogs At New Holland Sales Stables, Inc.
See them weighed, sold and pickup your check.

10:00 AM

HORSES MULES



1:30 PM
BEEF SALE



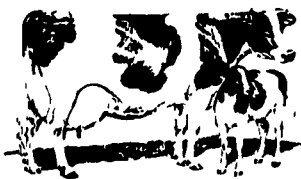
SHEEP



CALVES

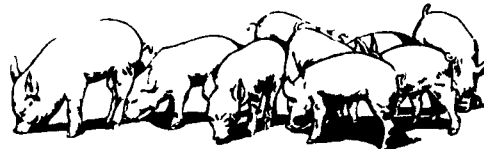
WEDNESDAY

DAIRY 11:00 AM COWS
HEIFERS COW SALE 12:00 NOON BULLS



We have the usual run of 50 to 100 Heifers, all ages.
Loads of fresh cows and springers from our regular shippers.
Also some local fresh cows and springers.

1:30 P.M.
FEEDER PIG SALE



Pigs are accepted after 6:30 A.M. State graded from 8 to 12
Dairy Barn and Feeder Pig Barn are cleaned and disinfected weekly for your protection.

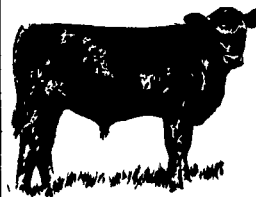
THURSDAY

Beef Auction
10:00 A.M.

BULLS
STEERS
BEEF COWS



STOCKERS
&
FEEDERS



1:30 P.M.
SHEEP
GOATS
CALVES



NEW HOLLAND SALES STABLES, INC.

12 Miles East of Lancaster Off Route 23, New Holland, Penna.

MANAGERS

Norman & David Kolb - 717-397-5538

Field Representatives

Luke Eberly - 215-267-6608 738-1865
Homer Eberly - 215-267-3047

Sale Barn Officer Manager
Roger Floyd - 717-354-4341

Order Buyer

Paul Good - 215-445-6662

Feeder Pig Representative
Mel Hoover - 717-354-8397