

# In Appreciation

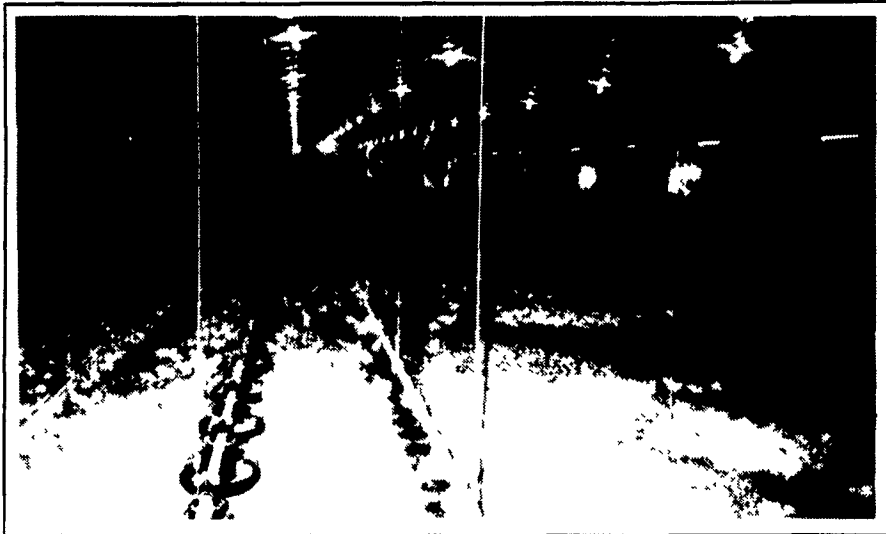
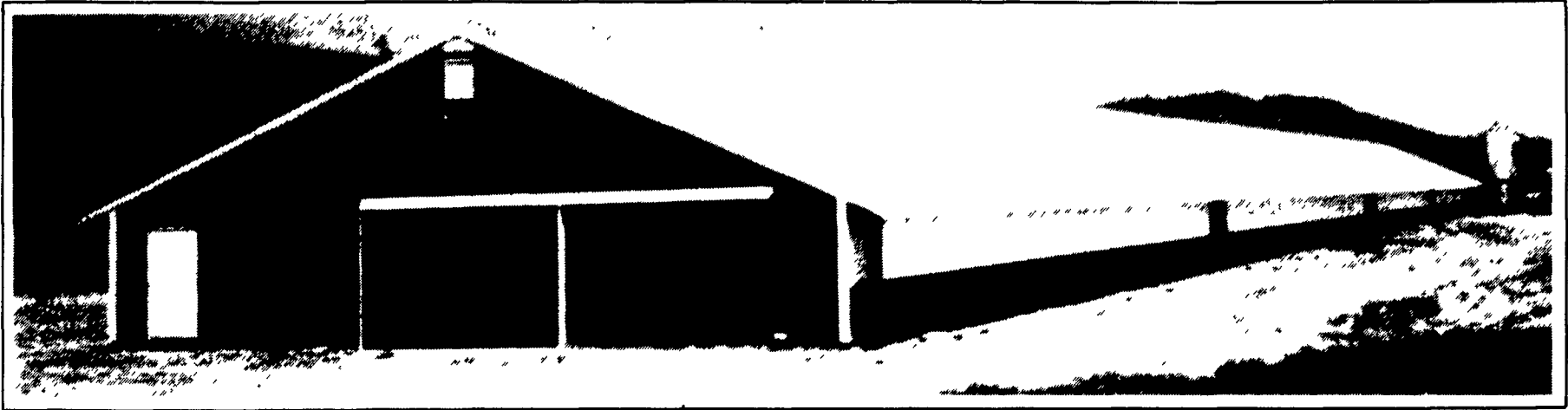
to

## DONALD & DIANE APPLE

Richfield, PA



### For Choosing FARMER BOY AG For Their New 44'x500' Poultry Facility



#### EQUIPMENT FEATURES:

- **CHORE-TIME** Bins, Augers & Fans
- **BEACON** Broiler Feedline
- **VAL** Watering Systems
- **DOSMATIC** Medicators
- **ACME** Direct Drive **TWISTER** Fans
- **L.B.WHITE** Heaters
- Insulated Curtains

#### BUILDING FEATURES:

- **ALUMAX** 29 Gauge Roofing And Siding
- **PLYCO** Doors & Windows
- **SIERRA** Fasteners

Let FARMER BOY AG'S Experienced Staff  
Discuss The Design & Cash Flow Of A Facility  
To Meet Your Specifications.

SWINE & POULTRY SYSTEMS SPECIALISTS

# FARMER BOY AG. INC.

410 E LINCOLN AVE

MYERSTOWN, PA 17067

PH 717 866-7565

We  
Ship  
UPS

HOURS:  
Monday Thru Friday  
7:00-5:00  
Saturday 7:30-11:30

24 Hour Service