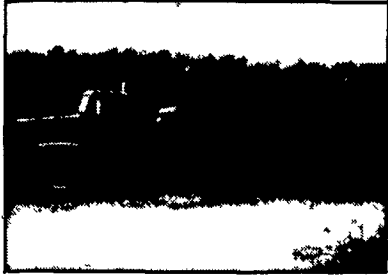


35 TRUCKS & TRAILERS

1974 Ford Truck with mounted 410 Knight manure spreader. Good condition \$13,000. Call Jim - (717) 789-3960



1973 FWD 10 Wheel drive trucks with 540 Meyers equalizer manure spreaders. Excellent for chicken manure. \$30,000 each. Good Condition. Call Jim - (717) 789-3960.

**36 REAL ESTATE**

Approx 79 acres in Bedford Co., PA. Mostly quite level ground. Approx 10 acres wooded. River bordering acreage. \$79,000. Call owner 814-733-4363

Attention Hunting Clubs-Investment Opportunity-50+ acres in Lycoming Co. next to State Game Lands, near Pine Creek. Lodge w/2 fireplaces, 5 outbuildings for RV & equipment storage. Sale, Lease or Lease Purchase. 215-637-4699

BRADFORD COUNTY, 3 bedroom ranch on 7 plus acres rural setting views remodeled kitchen, \$48,900. Endless Mountain Real Estate. 717-297-2409. Call Jim Goodrich 717-596-3228

BRADFORD COUNTY, 2 story 3 BR 2 bath home on 50 ac ballroom new vinyl siding, 3 septic, 2 mobile homes ideal for bed & breakfast located on major highway, \$160,000. Endless Mountain Real Estate. 717-297-2409. Call Dick Berry 717-596-2935

Bucks County, Forty Five Acres, pond, two houses, barns, 1800' road frontage, owner financing. \$1,000,000.00 Box 455, Warrington, PA 18976.

Buy Owner 250A Dairy Farm, will sub-divide, South of Penn Yan, NY. \$150,000.00. 315-253-2874.

COLUMBIA COUNTY, 169 acres, 84 tilled, spring fed pond, adjacent State Game Lands, Jerseytown-Whitehall-Washingtonville area. Must See to appreciate. \$319,000.00 703-671-7285.

DAIRY FARM FOR RENT, Wayne Co., PA. 130 acres: 70 tillable, 35 pasture, 25 woods 4 bdr. home, bank barn with silo, 40 tie stalls, 9 stanchions, 4 pens. Dumping station, cube cooler, bulk tank. \$1,700 per month. 717-798-2977.

DEEP CREEK LAKE, MD: Views! Lakefront and Lake access homesites available. Call for FREE Color Guide to Homes. A & A REALTY. 1-800-336-LAKE

Desire to swap 10-acre farmette, located 10 miles SW of Lancaster, for acreage suitable for farmstead. Please reply to: KS, 145 Witmer Rd., Conestoga, PA 17516. 717-872-5712.

20 acres of farm ground, perked, in Tioga County. (717)649-5009.

FARMETTE: 20 Acres Main house and 2 rentals on property, outbuildings, horses, dairy farm or commercial use, additional land can be purchased. MD/PA line. Adams County. 717-359-5793.

10-Acres -Southern Lancaster County. Ideal for farmette, orchard, homesite No further sub-division permitted. Standard perk \$62,900. Century 21 Ask for Joanne 717-786-2131 or 717-786-2440 Eves.

112 Acre farm in Dauphin Co. along Rt. 147. Renovated 13 room house, barn and several outbuildings. 90 acres tillable 717-597-8708 after 4PM.

1977 Ford LN9000, 290 Cummins, 10 speed road ranger, w/Henderson rear, \$7,500. (301)879-1981.

254 acre Minnesota farm, 185 tillable, plush split entry home (appraised \$80,000). Large buildings (152x112'), concrete flooring, matching metal, 6 year old set of buildings. Financing \$165,000. Cash \$145,000. 218-837-5320.

268 acres dairy, Franklin County. VanCleve Real Estate. (717)392-3032.

5 miles south of Carlisle beside Cumberland Golf Course, 2 story farm house with 3-car garage, large barn and outbuildings on 8 acres. \$124,900. Phone owner, 717-486-5089.

66 acres Western Berks County, PA. House, barn, sheds, large pond. Nice location, \$289,000. Pieller Realty. (215)693-5624.

70 acre farm, house and barn for sale by owner. (301)658-2288 for more information.

73.5 acre farm, about 40 tillable & 30 wooded acres, strong springs, excellent hunting. Perk tested. Southern Columbia Co. \$1,350/acre. No calls after 6 p.m. No realtors. Call 717-799-5703

¾-acre wooded building lot, perked-probed-surveyed, within five minutes of New Holland, Lanc.Co. 717/354-5867.

10 Acre Juniata County Farmette, 15 miles West of Mifflintown, 5 bedroom house, 40'x97' bank barn, wagon shed, hard road frontage. Financing available. \$65,000 -additional acreage available. 717-734-3154.

FOR SALE: NE Lanc. Cty, Farmhouse features 4 bedrms, on 2.5 acres with greenhouse, bank barn and lots of room. Zoned for two horses. Call for more information today. ERA HOP USNER & ASSOC. 717-738-2005 or 717-627-1230.

FOURNIER REAL ESTATE
St. Lawrence Valley: All Types Real Estate. Dairy, land, hobby farms and waterfront. Bradley Love, Salesperson. RR2, Box 274, Gouverneur, NY. 13642. 315-287-2234

For Sale: Fort Myers, Florida. Converted Fifth Wheel, located in Condo Park, Gulf Access, landscaped, shaded lot, screen room, central heat/air. Low \$40's. Call 813/267-0887.

LYCOMING CO. DAIRY FARM: 175 free stall barn, 5 silos, double six Herringbone parlor, 4BR house, 130 acres, more available. 717-494-1551.

MARYLAND two farms, One with total irrigation, former dairy with buildings, excellent soil, level acreage. Also, excellent beef cattle farm, excellent house and buildings. Call Mr. Hanney, Realtor. 301-747-1473.

MARYLAND We have a catalog of farms of all sizes and types for sale. Free information by request. Mr Haney, Farm Realtor, L&F, 301-747-1473.

Modern 196 acre dairy farm still in operation, prime location, alfalfa land, buildings, and gravity spring water. (518)425-3381.

FOR RENT: Modern 45 cow tie stall facilities w/silo, office, pasture. Northwest Berks Co. Available immediately. Feed available for purchase. 717-933-4859

VICTORIA, VIRGINIA
150 acre farm, remodeled home, barn, fruit trees, nice stream, pond sites, long road frontage. 30 acres open, balance in timber. \$185,000. Owner financing.
Call after 8 PM
804-696-1178

A beautiful 23 acre horse farm - stream, pond, barn, pasture, etc. Great location along the Maryland line in Southern York County. Show place potential! For details please call **717-235-0693**

ESTATE SALE

Wayne County, Pennsylvania, 158+/- acres, farm house, barn, silo, extensive road frontage on township road, stream, views. For information, contact **Jeffrey S. Treat** Attorney for the Estate 606 Church Street, Honesdale, Pennsylvania 18431 at 717-253-5953

EASTERN SHORE OF MD

One of the best farms in Kent County, Maryland. Mostly matapeake and sassafaras soil. 229 acres formerly a dairy farm, excellent for crops or nursery, good highway exposure, for the specialized agricultural operation. \$900,000.

ERA KENT CREEK REAL ESTATE
Galena, MD
(301) 648-5656

COMMERCIAL PROPERTY

Is your agricultural related business looking to expand into a very reasonably priced leased facility, rebuilt or remodeled for your needs? Located 10 minutes from PA Turnpike Exit 20, North Lancaster County. Let's talk!
(717) 664-2629

WESTERN BERKS DAIRY FARM

153 acres w/beautiful stone home, barn, pond, and other out buildings. 120 acres tillable, mostly limestone soil, subdivision possibility.

EAST PENN REALTY, INC.
(215) 944-6300

28 acre farmette, 10 miles NW of Gettysburg, approximately 700' of state road frontage, 7-room red brick farm house w/2 baths, small pond, and approximately 5 acres of woodland w/scenic view. Asking \$165,000, for sale by owner.
(717) 677-8893

SOUTHERN YORK COUNTY

44.7 acres, 40 acres tillable, air strip is very possible. \$129,000.

27.4 acre farm, small house, bank barn, stocked Trout stream, 10 acres tillable, \$189,000.

Large bank barn, small stream, 3.3 acres ready to build on. \$48,500.

Olde Mill Real Estate
717-244-8511

OPERATING DAIRY FARM
150 acres, 100 tillable, bank barn, pole barn, storage barn. 4 bdr. house. All necessary farm equipment, and 26 cows. \$150,000.

LEW Real Estate
141 Chestnut St.
Corning, NY 14830
607-937-5637

FOR SALE:

By The Jefferson/Lewis County line, 250 acre dairy farm, 95% tillable, 4 BR modern home, 115 head of cattle, pipeline milker, Harvestore for high moisture corn, modern machinery, 20,000# herd average, high in butterfat and protein. Reason for sale, lack of health. More details call

(315) 346-1265,
if no answer call (315) 346-1170
evenings if possible.

FOR SALE

NORTHUMBERLAND COUNTY
26 acre hog farm, 53'x59' barn, 65 sow farrow to feeder pigs, turn-key operation. Room for expansion. Concrete manure pit 65' in diameter 8' deep, built in 1989. 30'x50' Holland stone one story dwelling, 4 bdrs., two baths, family room, two-car garage built in 1975.

SHEETZ REAL ESTATE
255 W. Main Street
Mount Joy, PA 17552
717-653-6313
Ask for Gene

142 acre farm, Clinton County, Lamar Township, close to state forest, new barn, older home, good view of the valley, excellent hunting: bear, deer, turkey. Good spring water, new wiring, new plumbing, hot air multi-fuel furnace, new hot water heater, new septic tank. 60% fields, balance woodland. 4 mile from I80 Route 220 Intersection. \$167,500.

Big Woods Land Company
Contact Bob Magulre
(717) 769-6445 Days
(717) 748-8603 Evenings
Other parcels available, call today for complete list.

TIOGA COUNTY

50 acres all wooded, excellent hunting area, good bldg. site, springs. \$30,000 #1061

Koch
REAL ESTATE

9 Cone Street, Wellsboro, PA 16901
717-724-3500

Possibility For Rent
1,000 to 1,500 head hog finishing set up. Includes modern farmhouse, barn & shed. Along w/2 liquid manure pits. In East Hanover Township, near Grantville, Lebanon Co.
Please Call
717-249-2418
Ask For Ed