

Carlisle Livestock Market

Carlisle, Pa.

Tuesday, May 15, 1990

SLAUGHTER STEERS: CHOICE NONE OFFERED; SELECT LIGHTS 67.00-73.00; STANDARD 63.00-66.50. SLAUGHTER HOLSTEINS: CHOICE 67.00-70.25; SELECT 63.00-66.25; STANDARD 55.00-61.60.

SLAUGHTER HEIFERS: CHOICE 74.00-75.00; HOLSTEINS TO 65.00. SLAUGHTER COWS: STRONG DEMAND! EARLYBIRD PEN FIRM 3.00-4.00 HIGHER. BREAKING UTILITY AND COMMERCIAL 57.00-60.25; CUTTER AND BONING UTILITY 55.00-60.00; CANNER AND LOW CUTTER 50.00-54.00; BIG MIDDLE 50.50-54.00; SHELLY 49.00 AND DOWN.

SLAUGHTER FAT BULLS: YG#1 68.00-70.10; YG#2 65.75.

FEEDER STEERS: 300-550 LBS. HOLSTEINS 78.00-81.00.

FEEDER HEIFERS: ALL WEIGHTS, MOSTLY HOLSTEINS OFFERED. MEDIUM 76.00-85.00.

FEEDER BULLS: ALL WEIGHTS, MEDIUM 1 81.00-85.00; MEDIUM 2 72.00-77.00.

VEAL CALVES: STRONG DEMAND. CHOICE 105.00-128.00; GOOD 94.00-104.00; STANDARD AND GOOD 83.00-93.00; LIGHT/WEAK 79.00 AND DOWN.

FARM BULLS: MOSTLY 160.00-199.00; FARM HEIFERS 130.00-167.00.

HOGS: BARROWS AND GILTS ACTIVE. US#1-3 210-260 LBS. 60.50-62.00; UNDER 200 LBS. 52.50-55.50.

SOWS: ACTIVE. OVER 450 LBS. 51.00-56.00; UNDER 450 LBS. 49.50-52.75; OVER 450 LBS. ALL WEIGHTS 45.00-49.00.

BOARS: 48.50-49.25.

FEEDER PIGS: BY THE HEAD, 15-20

LBS. 26.00-28.00; 35-50 LBS. 44.00-59.00.

SHOATS: BY THE POUND, 135-170 LBS. 45.00-60.00.

SHEEP: EWES 20.00-35.00; YEARLINGS TO 55.00.

LAMBS: CHOICE 50-75 LBS. 72.00-84.00; CHOICE 70-100 LBS. 63.00-71.00; GOOD 50-75 LBS. 60.00-69.00.

GOATS: BY THE HEAD, LARGE 60.00-88.00; SMALL/MEDIUM 21.00-56.00.

SALE EVERY TUES. EVE., RABBITS, POULTRY AND EGGS 5 P.M.; LIVESTOCK 7 P.M.

NEXT STATE GRADED FEEDER PIG SALE FRIDAY, MAY 25, 1:30 P.M. NO HAY SALE UNTIL FALL.

New Wilmington Livestock Auction

N. Wilmington, Pa.

Monday, May 14, 1990

Report Supplied by PDA

CATTLE 267...PDA...Compared with last Monday's market: Slaughter cows steady to weak. Few Choice slaughter steers 75.00-77.25, couple Select 73.75-74.00; few Choice Holsteins 71.25-72.25, couple Select 66.00, few Standard 60.00-68.00. Couple Choice sl. heifers 72.00&75.25, few Select & low Choice 68.00-69.50, Standard 58.00-64.00, few Utility 53.00-57.00. Breaking Utility & Commercial sl. cows 51.50-56.50, few 57.50, Cutter & Boning Utility 49.75-54.50, high dressing 55.75, Canner & Low Cutter 40.00-49.75. Yield Grade No. 1, 1185/1460 lbs. sl. bulls 63.75-69.00, one No. 2, 1295 lbs. 60.00. Feeder Cattle: Medium & Large Frame #1, 300/590 lbs. steers 85.00-101.00. Med. & Large Frame No. 1, 325/670 lbs. heifers 70.00-83.50, few 100.00-109.00. Med. & Large Frame No. 1, 545/835 lbs. bulls 60.00-71.00.

CALVES 271... Supply included 70% of

farm calves returned to farm...Few High Choice & Prime vealers 120.00, Choice 100.00-112.50, few Good 92.50-98.00, Standard & Good 90/120 lbs. 80.00-90.00, 60/85 lbs. 60.00-80.00, lot Utility 53.00-60.00. Farm Calves: Hol. Bulls No. 1, 85/135 lbs. 140.00-181.00, No. 2, 90/120 lbs. 93.00-130.00; No. 1, Hol. Heifers 80/135 lbs. 95.00-152.50; Beef cross 70/100 lbs. bulls & heifers 100.00-180.00, few 200.00-225.00.

HOGS 574...Barrows and gilts 2.00 higher. US No. 1-2 225/260 lbs. 61.75-62.25, 1-3 215/265 lbs. 60.25-61.75, 2-3 225/280 lbs. 57.50-60.00, lot 1-3 210 lbs. 59.75, 175/200 lbs. 54.75-57.00. Sows 2.00 to 3.00 lower. US No. 1-3 320/595 lbs. sows 50.00-54.25. Boars 46.00-50.00, light weights 44.50-45.00.

FEEDER PIGS 27...Few US No. 1-3 30/35 lbs. 34.00-37.00, 40/80 lbs. 43.00-54.00 --- all per head.

SHEEP 210...High Choice & Prime 55/80 lbs. spring lambs 77.00-90.00, 80/100 lbs. 70.00-83.00, Good and Choice 50/70 lbs. 60.00-74.00. Slaughter sheep 15.00-24.00.

GOATS 13...Couple Medium 35.00, Medium & Large Kids 20.00-32.00 --- all per head.

Leesport Livestock

Leesport, PA

Wednesday, May 16, 1990

Report Supplied by PDA

CATTLE 276. COMPARED WITH LAST WEDNESDAY'S MARKET, SL. STEERS .50 TO \$1.50 LOWER; SL. COWS BU. UT. & COM. WEAK TO \$1 LOWER. CANNER THRU BON UT. .50 TO \$1 HIGHER. CHOICE 1000-1435 LBS. 74.75-78.50; SEL. 70-73, FEW H. CH. & PR. HOL. 1300-1470, 70.50-74.00, CH. 1200-1440 65.00-70.75, SEL. 63.00-65.25, STAND. 62.00-64.00, FEW TO 65.50. FEW CH. 950-1000

71.75-73.85, ONE 75.00, SEL. 61.75-69.50, FEW STAND. 57.25-62.25, BREAKING UT. & COMMERCIAL SL. COWS 52.75-57.75, CUTTER & BON. UT. 53.00-58.75, COUPLE 58.75, LOW DRESSING 51.00-53.00, CANNER & LO CUTTER 49.00-56.50, SHELLS DOWN TO 47.00. CH. SL. BULLOCKS 67.75-75.00, ONE 76.50, FEW SEL. 66.00-69.50, FEW STAND. 60.00-63.25. FEW YIELD GRADE NO. 1 1300-1700 LBS. SL. BULLS 64.00-70.50.

FEEDER CATTLE: STEERS FEW MEDIUM FRAME NO. 1 & 2 600-765 LBS. 68.00-76.00, LOT LARGE FRAME NO. 2 345 LBS. 96.00, HEIFERS FEW MEDIUM FRAME 1 & 2 310-585 LBS. 67.00-73.00, FEW 87.00. BULLS FEW MEDIUM & LARGE FRAME NO. 1 600-750 LBS. 66.00-73.00.

CALVES 156. FEW GOOD 95.00-105.00, FEW STAND. & GD. 75-125 LBS. 78.00-95.00, FEW 130-150 LBS. 120.00-170.00, 85-125 LBS. 180.00-190.00. NO. 1, HOLSTEIN BULLS 85-90 LBS. 140.00-180.00, NO. 2 95-115 LBS. 115.00-170.00, FEW 75-95 LBS. 93.00-130.00. NO. 1 HOL. HEIFERS 90-110 LBS. 95.00-190.00, MOSTLY 125.00-177.50. FEW BEEF CROSS 75-115 LBS. BULL & HEIFERS 147.50-190.00, ONE 200 LBS. @ 140.00.

HOGS 412. BARROWS & GILTS \$3 TO \$4.50 HIGHER. US NO. 1-2 220-255 LBS. 63.00-63.50, LOT 63.85, 1-3 215-260 LBS. 60.25-63.75, MOSTLY FEW 60.25-63.00, 200-215 LBS. 55.00-59.00. FEW 2-4 290-315 LBS. 55.50-57.00, FEW 1-3 145-180 LBS. 52.00-54.00. SOWS 500 LBS. 50 .1 TO 500 3-5, US NO. 1-3 285-600 LBS. 49.50-52.75, MED. 335-415 LBS. 46.00-49.25. BOARS 48.00-51.00, FEW LIGHT WEIGHTS 45.50-46.25.

FEEDER PIGS 288. FEW US NO. 1-3

20-25 LBS. FEEDER PIGS 200-205, 1-3 30-35 LBS. 125.00-140.00, 1-3 45-50 LBS. 105.00-120.00, 1-3 50-65 LBS. 90.00-105.00, LOT FEW UT. 15-20 LBS. 25.00-39.00 PER HD.

SHEEP 71. CHOICE 30-70 LBS. 82.50-107.50, FEW 75-95 LBS. 73.00-88.00. SLAUGHTER SHEEP 14.00-26.00 FEW 37.00.

GOATS 31. FEW LARGE 62.00-80.00, MEDIUM AND THIN FLESHED 37.50-55.00, FEW LARGE KIDS 37.50-60.00, SMALL KIDS 20-30 HD.

New Holland Dairy

New Holland Sales Stables

Wednesday, May 16, 1990

Report supplied by auction

REPORTED RECEIPTS OF 55 COWS, 37 HEIFERS, AND 5 BULLS. HEIFER MARKET LOWER; COW MARKET STRONGER.

PA FRESH COWS: 1000.00-1175.00. PERRY COUNTY FRESH COWS: 850.00-1360.00.

PA FRESH COWS: 1025.00-1425.00. PA FRESH COWS: 1050.00-1600.00. WISCONSIN FRESH COWS: 1175.00-1625.00.

LOCAL SPRINGING HEIFERS: 735.00-1210.00.

OPEN BREEDING AGE: 610.00-680.00.

SMALL OPEN: 350.00-425.00. VACCINATED HEIFERS BRING A PREMIUM.

BULLS: 525.00-925.00. LOCAL COWS: 700.00-1500.00.

PARADISE CONCRETE METERED DELIVERY!

You can't over or under order! Guaranteed Savings! Call us for Prices. Variable Pricing!

DELIVERY ANYTIME!

Dedicated To The Farm Community



717-687-0990

19 Meadow Lane Paradise

Mitch White Eric R. Probst

HOSTETTER PORK

Wanted To Buy Crippled and Disabled Sows and Boars



Hogs Slaughtered For Federal Inspection

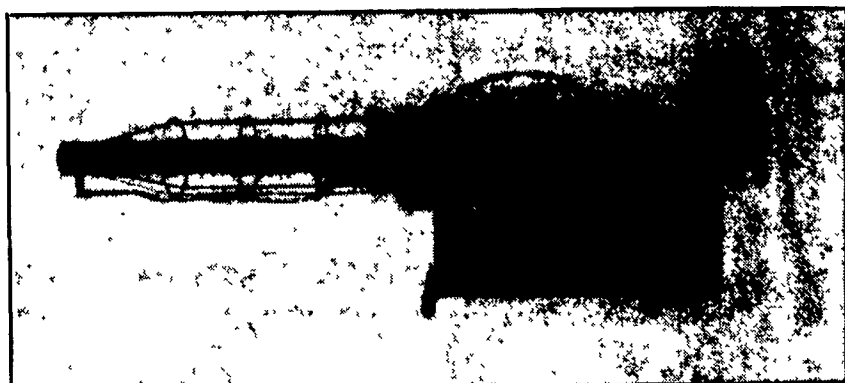
PHONE 717-274-7609

MELHORN SALES, SERVICE, TRUCKING CO.

1010 W. Main St., Mount Joy, PA 17552

BIOFOGGER

A Revolutionary Way To Disinfect Your Poultry Or Hog Buildings



- Thermal Fogger Using Bioguard X-185
- Cost Effective Method For Disinfecting

Call For Price On Unit Or For Us To Do The Job For You

The only full service company, in this area, to handle the total needs of the poultrymen.

For More Information Phone: 717-653-1102

Monday - Friday 8:30 AM - 4:00 PM



Green Dragon Livestock Sales

Location: 1 mile N. on North State St., Ephrata.

SALE EVERY FRIDAY

11:00 A.M.- Beef

7:00 P.M.- Small

Animal Sale.

Office 717-733-2444

Home 717-838-4318

WALTER H. RISSER, Proprietor

CHESTER COUNTY HAY SALE

"The fastest growing brokerage in Chester County"

Deliveries dispatched to suit

TRUCKER schedule.

Tailoring the blends and costs to individual farm needs.

Satisfaction Guaranteed

Highest Prices Paid For Timothy Mulch.

For more information on an "A" rated brokerage.

Call **JOHN PRIMUS** 215-383-6686

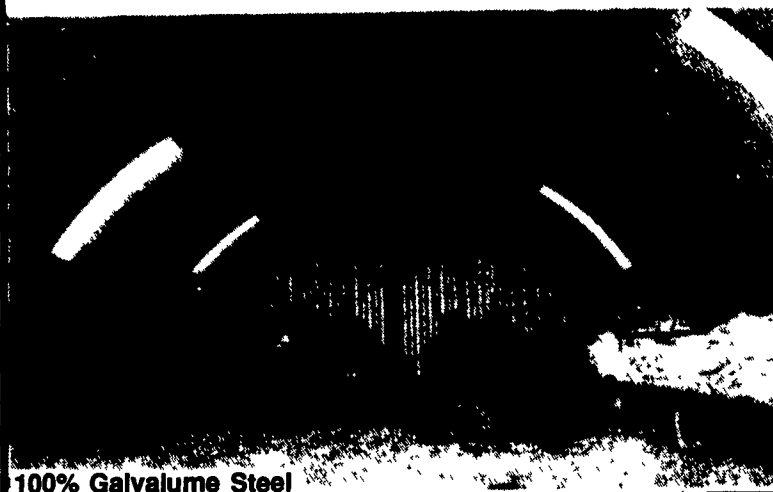
Buck Run Road — Coatesville

You'll think we've lost our minds! PRICED REDUCED UP TO \$6000

Call us TOLL FREE now!!!

N.Y.S. 800/942-1234

Other States 800/431-1338



100% Galvalume Steel

• Strong & Sturdy • Simple Erection

• Maintenance Free

ATLANTIC BUILDING SYSTEMS, INC.

- A name you can trust -

