

Morrison's Cove Livestock

Martinsburg, Pa.
May 14, 1990

Report supplied by auction

CATTLE 156. STEERS: H. CHOICE & PRIME 76.00-80.10, CHOICE 72.00-75.75, GOOD 66.00-71.00, STANDARD 60.25-65.75. HEIFERS: 72.25-76.00; GOOD 59.50-68.50.

COWS: UTILITY & COMMERCIAL 54.50-60.50; CUTTERS 52.00-54.25, CANNER & LOW CUTTER 44.50-51.75.

BULLOCKS: GOOD & CHOICE 66.50-72.50.

BULLS: YIELD GRADE NO. 1 60.50-68.75.

FEEDER CATTLE: STEERS 66.00-90.50, BULLS 61.00-86.50; HEIFERS 64.00-87.50.

CALVES 188. PRIME 115.00-131.00; CHOICE 105.00-112.50, GOOD 96.00-104.00, STANDARD & GOOD 86.00-95.00, 90-110 LBS. 86.00-98.50, 65-90 LBS. 75.00-94.50, HOLSTEIN BULLS 90-130 LBS. 142.00-201.00, HOLSTEIN HEIFERS 90-130 LBS. 115.00-174.00.

HOGS 144. US NO. 1-2 56.00-62.50, US NO. 1-3 60.00-61.50.

SOWS: US NO. 1-3 48.00-56.00.

BOARS 47.00-49.75

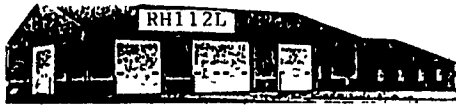
FEEDER PIGS 109. US NO. 1-3 20-35 LBS. 27.50-43.00 PER HEAD, NO. 1-3 35-50 LBS. 46.00-55.00 PER HEAD.

SHEEP 60. CHOICE 62.50-67.00; GOOD 56.00-60.00; SLAUGHTER EWES 18.50-34.50.

GOATS: 24.00-62.00 PER HEAD.

19 LOADS HAY, 46.00-135.00.

1 LOAD OF STRAW, 81.00.



Diffenbach's New Holland Auction Center, Ltd.
100 WEST JACKSON ST. • BOX 485 • NEW HOLLAND, PA. 17557
PHONE (717) 355-7253 (717) 393-4464 (717) 354-3297

You Can Buy

You Can Sell

HAY SALE EVERY MONDAY- 10:00 A.M.

1990 SPECIAL SALES

JUNE 1990						
S	M	T	W	T	F	S
-	-	-	-	-	1	2
3	4	5	6	7	8	9
10	11	12	13	14	15	16
17	18	19	20	21	22	23
24	25	26	27	28	29	30

JULY 1990						
S	M	T	W	T	F	S
1	2	3	4	5	6	7
8	9	10	11	12	13	14
15	16	17	18	19	20	21
22	23	24	25	26	27	28
29	30	31	-	-	-	-

AUGUST 1990						
S	M	T	W	T	F	S
-	-	-	1	2	3	4
5	6	7	8	9	10	11
12	13	14	15	16	17	18
19	20	21	22	23	24	25
26	27	28	29	30	31	-

- SAT. JUNE 2..... 9:00 A.M. Consignment Auction Antique Furniture.
- FRI. JUNE 15..... 9:00 A.M. Farm Equipment & Supplies
- SAT. JUNE 30..... 10:00 A.M. Bertha Shirk, Paradise. Real Estate, HH Goods & Antiques. (On the premises)
- FRI. JULY 13..... 9:00 A.M. Farm Equipment & Supplies
- TUES. & WED., JULY 24 & 25 9:00 A.M. Quilts, Crafts, & Buggies
- FRI. AUG. 17..... 9:00 A.M. Farm Equipment & Supplies
- TUES. AUG. 28..... 6:00 P.M. Guns of all descriptions
- TUES. SEPT. 4..... 6:00 P.M. Lawn Mowers & Garden Equipment
- FRI. SEPT. 14..... 9:00 A.M. Farm Equipment & Supplies
- TUES. SEPT. 25..... 6:00 P.M. Guns of all descriptions
- SAT. OCT. 6..... 9:00 A.M. Camp Deer Park Benefit Auction
- FRI. OCT. 12..... 9:00 A.M. Farm Equipment & Supplies
- TUES. & WED., OCT. 23 & 24 9:00 A.M. Quilts, Crafts, & Buggies
- FRI. NOV. 9..... 9:00 A.M. Farm Equipment & Supplies
- SAT. NOV. 24..... 9:00 A.M. Toys, Crafts, Gifts, & Tools

SEPTEMBER 1990						
S	M	T	W	T	F	S
-	-	-	-	-	-	1
2	3	4	5	6	7	8
9	10	11	12	13	14	15
16	17	18	19	20	21	22
23	24	25	26	27	28	29
30	-	-	-	-	-	-

OCTOBER 1990						
S	M	T	W	T	F	S
-	1	2	3	4	5	6
7	8	9	10	11	12	13
14	15	16	17	18	19	20
21	22	23	24	25	26	27
28	29	30	31	-	-	-

NOVEMBER 1990						
S	M	T	W	T	F	S
-	-	-	-	1	2	3
4	5	6	7	8	9	10
11	12	13	14	15	16	17
18	19	20	21	22	23	24
25	26	27	28	29	30	-

DECEMBER 1990						
S	M	T	W	T	F	S
-	-	-	-	-	-	1
2	3	4	5	6	7	8
9	10	11	12	13	14	15
16	17	18	19	20	21	22
23	24	25	26	27	28	29
30	31	-	-	-	-	-

**Contact Us For Rates
And Dates For Your Sales**

ADD YOUR SALE TO THIS LISTING NOW!
Diffenbachs Aucts. 225L
Bonded Licensed Livestock Dealer and Order Buyer

**Equipped And Ready
To Serve You**

**SHORT NOTICE
HORSE SALE
FRIDAY EVE., JUNE 1**

**NEW HOLLAND SALES STABLES INC.
THE ACTION AUCTION**

**REGISTERED HEIFER
SALE
SATURDAY, JUNE 9**

LIVESTOCK IS OUR ONLY BUSINESS

MONDAY

SLAUGHTER HOGS

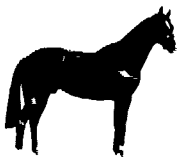


**EARLY BIRD HOG SALE
7:30 A.M.**

Sell Your Hogs At New Holland Sales Stables, Inc.
See them weighed, sold and pickup your check.

10:00 AM

HORSES MULES



1:30 PM

BEEF SALE



SHEEP



CALVES

WEDNESDAY

DAIRY 11:00 AM COWS
HEIFERS COW SALE 12:00 NOON BULLS



We have the usual run of 50 to 100 Heifers, all ages.
Loads of fresh cows and springers from our regular shippers.
Also some local fresh cows and springers.

**1:30 P.M.
FEEDER PIG SALE**

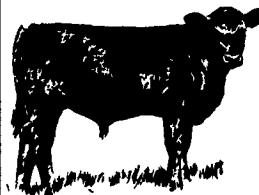


Pigs are accepted after 6:30 A.M. State graded from 8 to 12
Dairy Barn and Feeder Pig Barn are cleaned and disinfected weekly for your protection.

THURSDAY

**Beef Auction
10:00 A.M.**

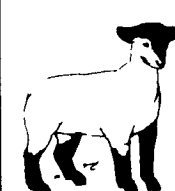
**BULLS
STEERS
BEEF COWS**



**STOCKERS
&
FEEDERS**

1:30 P.M.

**SHEEP
GOATS
CALVES**



NEW HOLLAND SALES STABLES, INC.

12 Miles East of Lancaster Off Route 23, New Holland, Penna.

MANAGERS

Norman & David Kolb - 717-397-5538

Field Representatives

Luke Eberly - 215-267-6608 738-1865

Homer Eberly - 215-267-3047

Sale Barn Officer Manager

Roger Floyd - 717-354-4341

Order Buyer

Paul Good - 215-445-6662

Feeder Pig Representative

Mel Hoover - 717-354-8397