

Isennock Auction

New Park, PA
 Monday, May 14, 1990
 Report supplied by auction
 SLAUGHTER COWS: GOOD TO LOW CHOICE 56.00-57.00, LOW TO GOOD 50.00-55.55; LOW AND SHELLS 48.75 AND LOWER.
 VEAL CALVES: 145-235 LBS 86.00-111.00; 100-110 LBS 135.00-173.00, 90-95 LBS 130.00-173.00, 70-85 LBS 92.00-147.00; WEAK CALVES 82.00 AND LOWER.
 FEEDER CATTLE, STEERS 325-360 LBS 87.00-87.50, 570-815 LBS. 74.00-76.50; HEIFERS, 360-510 LBS. 82.00-87.50; 510-840 LBS. 71.25-76.25.
 BULLS: 365-490 LBS. 86.00.
 FED STEER, HOLSTEIN. 1 AT 1235 LBS 69.50
 SOWS: GOOD 470-520 LBS. 51.00-52.00; OTHERS 370-430 LBS 45.00-48.50.
 HOGS 200-210 AVG 53.00.

Westminster Livestock Auction

Hagerstown, Md.
 Tuesday, May 15, 1990
 Report supplied by auction
 COWS UTILITY 53.00-58.00; HIGH DRESSING 59.00-61.00; CANNERS 52.00-56.00, SHELLY 52.00 DOWN.
 BULLS: YG#1 1650 LBS. UP TO 71.75; YG#2 1100-2000 LBS. 63.00-66.00.
 FED STEERS: HIGH CHOICE 1200 LBS. UP TO 79.75, AVG. CHOICE 76.00-78.50, SELECT 70.00-75.00, CHOICE HOLSTEINS UP TO 69.75, SELECT HOLSTEINS 63.00-67.00.
 FED HEIFERS. CHOICE 900-1125 LBS. 70.00-73.00; SELECT 65.00-69.00, STANDARD HOLSTEINS 58.00-63.00
 VEAL CALVES: CHOICE 170-250 LBS. 105.00-120.00; GOOD 95.00-104.00; CULLS 85-120 LBS. 85.00-92.00; 50-80 LBS. 70.00-85.00; WEAK AND ROUGH 70.00 DOWN.
 FARM CALVES, HOLSTEIN BULLS- FEW UP TO 195.00; #1 90-125 LBS. 165.00-185.00; #2 85-110 LBS. 120.00-160.00.
 HOLSTEIN HEIFERS: 100-125 LBS. 130.00-170.00; BEEF X BULLS 140.00-170.00; BEEF X HEIFERS 100.00-127.00.
 BUTCHER HOGS: #1 AND 3 215-260 LBS. 60.00-61.00; #2 AND 3 220-280 LBS. 55.00-58.00; #1 AND 3 290-350 LBS. 51.00-54.50; 2 AND 3 46.00-49.00.
 SOWS: 300-500 LBS. 50.00-52.00; 500-700 LBS. 52.00-54.00
 5BOARS: UP TO 49.75.
 STOCK CATTLE, STEERS: 300-500 LBS. 89.00-107.00, 500-700 LBS 75.00-87.00, 700-1000 LBS. 67.00-77.00
 HOLSTEINS: 900-1100 LBS 55.00-59.00
 HEIFERS 200-400 LBS. 80.00-98.00, 400-500 LBS 75.00-91.00, 500-700 LBS 72.00-83.00
 BULLS 200-400 LBS 90.00-119.00, 400-500 LBS 85.00-93.00, 1 920 LB AT 63.00
 LAMBS. CHOICE TO PRIME 100-120 LBS. 65.00-70.00, 80-100 LBS 71.00-73.00, GOOD TO CHOICE 60-80 LBS. 64.00-73.00, 40-60 LBS. 75.00-91.00.
 SHEEP: 19.00-21.00; YEARLINGS UP TO 35.00.
 GOATS: LARGE 60.00-90.00, MEDIUM 50.00-70.00, SMALL FLESHY 34.00-45.00

PIGS AND SHOATS, BY THE HEAD, 20-30 LBS 26.00-42.00; 30-50 LBS. 45.00-55.00, BY THE POUND, 30-60 LBS 89.00-95.00, 110-185 LBS 57.00-61.00.
 STOCK BOARS: 220-250 LBS 48.00-52.50, 160-190 LBS 42.00-48.00

Grantsville Livestock

Grantsville, Maryland
 Sat., May 12, 1990
 HOGS. TOP BARROWS & GILTS 59.50-62.00; HEAVY BUTCHER 57.00-61.50; LIGHT BUTCHER 48.00-59.00; BUTCHER SOWS 42.00-55.00, FEEDER SHOATS 8.00-62.50.
 VEAL: RETURN TO FARM TO 1.85; GOOD 1.00-1.30, STANDARD 85.00-90.00, UTILITY 60.00-75.00; BULL CALVES 120-1.80.
 SHEEP & LAMBS. GOOD 65.00-70.00; UTILITY 62.00-64.00, SLAUGHTER EWES 15.00-20.00.
 SLAUGHTER CATTLE: STEERS GOOD NONE AVAILABLE; STANDARD 62.00-65.00; UTILITY 58.00-60.00. HEIFERS: GOOD NONE AVAILABLE; STANDARD 60.00-69.00; UTILITY 55.00-58.00.
 COWS: COMMERCIAL 52.00-62.75; UTILITY 45.00-48.00; CANNER AND CUTTER 40.00 AND DOWN.
 BULLS: COMMERCIAL & GOOD 65.00-75.85; CUTTER & UTILITY 60.00-62.50.
 STOCK-FEEDER CATTLE: GOOD 80.00-90.00; MEDIUM 60.00-70.00.
 STEER CALVES: GOOD 90.00-1.15; MEDIUM 80.00-85.00.
 HEIFER CALVES: GOOD 85.00-1.05; MEDIUM 65.00-75.00.

East Coast Carlot

Wed., May 16, 1990
 Report supplied by USDA
 EAST COAST CARLOT MEAT TRADE DELIVERED PRICES (CAF) BOSTON TO WASHINGTON AREA INCLUSIVE.
 COMPARED TO LAST WEEK: NO SALES REPORTED ON LAMB CARCASSES BUT A WEAK UNDERTONE PREVAILS.

Peoria Sheep

Peoria, Illinois
 Tuesday, May 15, 1990
 BP 0900C SF --O--
 REQUEST .2062
 FEDERAL-STATE OPENING, MID-SESSION AND CLOSE SHEEP: 100 TRADING MOD 62.00-64.00

North Jersey Market

Hackettstown, N.J.
 Tuesday, May 15, 1990
 Hay—Straw & Grain Report
 MIXED HAY: 1.00-2.40 BALE.
 GRASS HAY: 1.60 AND 2.30 BALE.
 TOTAL: 7 LOADS

St. Louis Cattle, Hogs

Thursday, May 17, 1990
 OPENING MID-SESSION WEEKLY CLOSE CATTLE AND CALVES: 425 (25 SLTR, 400 FDRS) SUPPLY CONSISTS OF FEEDER CATTLE AND COWS FOR REGULAR THURSDAY AUCTION.
 NO TEST ON SLAUGHTER CATTLE. SLAUGHTER CLASSES: NO TEST COWS: CUTT, UTIL, COMM BULK SALES HI-DRESS % LO-DRESS % BREAKING 2-4 BONING 1-2 LOW TO AVG. CUTTER.
 RECEIPTS THIS WEEK 1,500: WEEK AGO 1,300: YEAR AGO 1,600.
 FOR THE WEEK, SLAUGHTER STEERS AND HEIFERS UNEVEN, MOSTLY STEADY. COWS STEADY TO 1.00 LOWER, DECLINE ON HI-YIELDING CUTTER AND BONING UTILITY.
 BULL FULLY STEADY. SLAUGHTER SUPPLY MAINLY CHOICE STEERS AND HEIFERS, AROUND 10% COWS.

Jersey Shore Livestock Market, Inc.

Auction every Thursday at 4:00 p.m.
 Jersey Shore, Pa.
 Report supplied by Auction
 Thursday, May 17, 1990
 RETURN TO FARM CALF 120.00-194.00.
 GOOD VEAL 80.00-119.00

COMMON VEAL 45.00-79.00.
 CHOICE STEERS 74.00-79.50.
 SELECT STEERS 68.00-73.00.
 COMMON STEERS 59.00-67.00.
 COMMERCIAL COWS 52.00-58.25.
 CANNERS-CUTTERS 46.00-57.00.
 SHELLS 45.00-50.00.
 CHOICE HEIFERS 72.00-76.00.
 SELECT HEIFERS 65.00-71.00.
 COMMON HEIFERS 58.00-64.00.
 GOOD FEEDERS 70.00-95.00.
 COMMON FEEDERS 50.00-69.00.
 BULLS 59.00-70.00.
 GOOD HOGS 59.00-63.00.
 HEAVY HOGS 61.50
 SOWS 48.00-53.00.

Pennsylvania Livestock Auction

Waynesburg, Pa.
 Thursday, May 17, 1990
 Report Supplied by PDA
 COMPARED WITH LAST THURSDAY'S MARKET.
 CATTLE BREAKING UT. & COMMERCIAL SL. COWS 52.00-58.50, FEW HIGH YIELDING 60.00. CUTTER & BONING UT. 49.50-54.50, CANNER & LO CUTTER 44.00-49.00. SHELLS DOWN TO 40.00. YIELD GRADE NO. 1 LBS. SL. BULLS 65.00-80.00, NO. 2 58.00-64.50.
 FEEDER CATTLE: STEERS STOCK COWS & CALF PAIRS 600 TO 980 PER PAIR! M&L 300-500 LBS. 90.00-109.00, 725 LBS. @ 77.00. HEIFERS M 250-400 LB. 80.00-07.00. BULLS M&L 350-600 LBS. 75.00-93.50, 785 LBS. 68.00-77.00.
 CALVES: VEALERS CHOICE 120-130, BOOD 90.00-108.00, NO. 1 HOLSTEIN BULLS 90-120 LBS. 140.00-166.00, NO. 2 99-120 LBS.

110.00-135.00. BEEF CROSS BULLS & HEIFERS 90.00-175.00.
 HOGS: US NO. 1-2 60.00-61.50, 1-3 55.00-59.25, 2-3 52.00-56.50. US NO. 1-3 350-400 LBS. 50.00-52.00, FEW 2-3 350-400 LBS. 47.00-49.00. BOARS 42.00-47.50.
 FEEDER PIGS NO. 1-3 30-40 LBS. FEEDER PIGS 40.00-55.00, 1-3 70-80 LBS. 44.00-47.00.
 SHEEP: H. CHOICE & PRIME 75-80 LBS. 71.00-74.00, CHOICE 40-55 LBS 60.00-69.00; GOOD/CHOICE 55.00-58.00; SLAUGHTER SHEEP 15.00-22.00.
 GOATS: LARGE 40.00-48.00, MEDIUM 30.00-36.00, SMALL 15.00-28.00/HD.

Indiana Livestock

Homer City, PA
 Thursday, May 17, 1990
 Report supplied by PDA
 CATTLE 183. COMPARED WITH LAST THURSDAY'S MARKET, SL. STEERS FULLY STEADY; SL. COWS FULLY STEADY; CHOICE 74.50-77.00; SEL. & LOW CH. 70.00-75.25, FEW SEL. 65.00-66.25; STAND. 62.25-69.75. H. CH. & PR. SL. HEIFERS 76.25-78.00, CH. 71.75-75.25, FEW SEL. & LCH 68.00-70.25, STAND. 61.25-67.00. BREAKING UT. & COMMERCIAL SL. COWS 52.00-57.00, COUPLE 57.75-63.00, CUTTER & BON. UT. 50.00-55.00, HD. 57.25, CANNER & LO CUTTER 43.75-50.25, YIELD GRADE NO. 1 1035-1690 LBS. SL. BULLS 61.00-68.00, COUPLE NO. 2 1160 LBS. 59.50.

SWINE & POULTRY EQUIPMENT SALES AND SERVICE

aerotech Engineered Power/Natural Ventilation
 The Shape of Efficiency
 With Pit Ventilation System

BUILDING PACKAGE
 • Poured Concrete Walls
 • Aluminum Roof And Ceiling
 • Rigid Ply Trusses

Edstrom Stainless Steel Nipple
 Waterers With 5 Year Warranty

PLYCO Prehung Aluminum Doors

GFI Bins & Flex Flow Fill Systems

DOSMATICPLUS Medicators

UNIVERSAL LP Gas Heaters

RUSCO Hi-Flow Water Filters

CAMBRIDGE AGRI-HEATER

SBM Heaters

HEAT PADS

Tenderfoot Flooring Systems

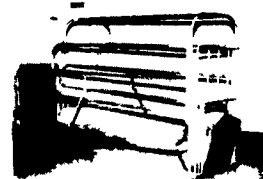
Alert Alarm Systems

Tri-Bar Flooring

KANE Milk Replacer Feeders



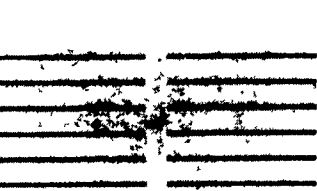
Penning
 ■ 100% Solid Steel Fence
 ■ Easy Open Gates
 ■ Extra Large Floor Plates



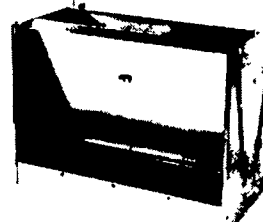
Farrowing Crate
 ■ Solid Steel Front Arch Farrowing Crate
 ■ Round Bottom Stainless Steel Sow Feeder



Gestation Crate
 ■ Solid Steel Stalls
 ■ Optional Drop Feed Tubes
 ■ Concrete Feeding & Watering Troughs Available



Standard Gang Slate. Performance and Economy. 4'x5', 4'x6', 4'x8' or 4'x10'
 ■ Wet Cast Gang Slats
 ■ Hand Finished



US Patent 4306518
 ■ Stainless Steel Feeders
 ■ Patent Feed Gate Design



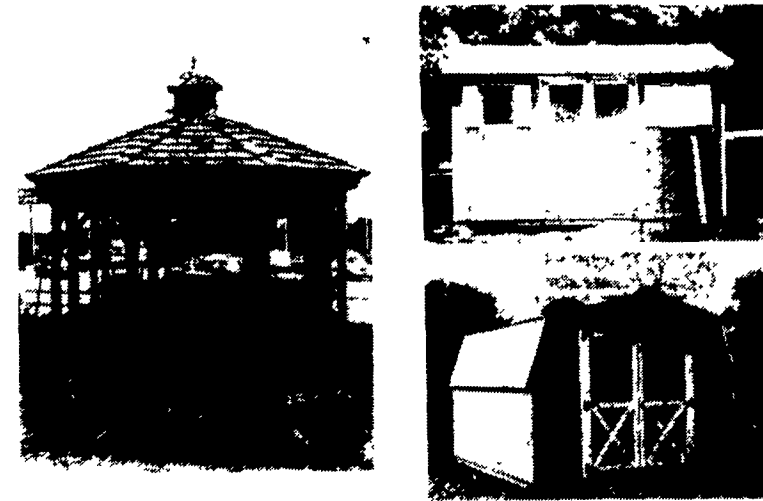
Aerotech Efficiency Fans & Shutters

STOCKING A COMPLETE LINE OF PARTS FOR YOUR NEEDS WE SHIP U.P.S.

TRI-COUNTY CONFINEMENT SYSTEMS, INC.
 Hours Mon-Fri 7:00 to 4:30 Sat 8:00 to 12:00

608 Evergreen Rd. Lebanon, PA 17042
 Ph: 717-274-3488

STORAGE BARNS & GAZEBOS
 Custom Made To Order



If You're Looking For Quality At A Good Price, Contact
B & B STRUCTURES

Henry K. Blank
 RD 1, Bird-In-Hand, PA 17505
 (717) 656-0783
 Dealer Inquiries Invited

DELIVERY AVAILABLE