

# Lancaster Co. DHIA

(Continued from Page D18)

Warren S. Auken									
18	RH	2-6	305	22,333	3.4	759			
David D. Zimmerman									
Monica	RH	3-1	305	21,869	3.4	758			
Kenneth D. Myer									
Lass	RH	4-9	305	21,590	3.5	757			
Edgefield Farms									
Elma	RH	3-0	305	18,445	4.0	753			
Glenn R. Binkley									
129	RH	2-3	305	22,375	3.3	752			
Clair Good									
Molie	RH	5-6	305	19,402	3.8	752			
Rohrer Brothers									
Tammy	RH	4-6	287	20,201	3.7	750			
J. Wilmer Conrad									
Irish	RH	5-8	305	19,897	3.7	750			
J. Ray Ranck									
Victoria	GrH	7-8	305	21,686	3.4	749			
John Omar Stoltzfus Jr.									
Lynn	RH	3-5	305	19,948	3.7	748			
Nelson H. Hershey									
164	GrH	5-10	305	17,868	4.1	748			
Curvin W. Nolt									
145	RH	3-11	305	22,499	3.3	747			
115	RH	5-8	305	21,212	3.5	743			
Ben G. Lantz									
Grace	GrH	4-4	305	20,122	3.7	747			
Harlan W. Hoover									
55	GrH	5-5	305	23,828	3.1	743			
Hershvale Farms									
97	RH	3-5	305	22,549	3.3	743			
Galen C. Martin									
Mandore	RH	3-0	299	17,966	4.1	743			

Truman Hertzler									
151	GrH		305	17,457	4.2	743			
J. Harold Musser & Son									
250	GrH	3-0	260	15,885	4.6	743			
John S. Zimmerman									
9	RH	6-3	271	19,472	3.8	742			
Vernon W. Heisey									
Blackbe	RH	7-9	305	19,811	3.7	741			
Melvin L. Shertzler									
Honeybun	RH	4-0	293	18,961	3.9	740			
J. Floyd Kreider									
40	RH	3-3	305	22,024	3.3	739			
Creek Knoll Farm #1									
Stormy	RH	5-2	305	24,605	3.0	738			
Honey	RH	6-2	305	17,830	4.1	733			
Earl E. Martin									
Jody	RH	10-5	305	17,594	4.1	736			
Carl L. Eberly									
93	GrH	7-8	305	24,937	2.9	734			
Melvin R. Eby									
Pearl	RH	3-3	305	20,352	3.6	734			
Tom & Dale Smith									
Eula	RH	3-2	305	19,997	3.6	732			
Twin Oak Farms									
501	GrH	3-5	305	18,315	4.0	732			
Earl H. Hoover									
40	GrH	5-7	290	18,289	4.0	732			
Piller-Pride Farm									
20H	GrH	3-5	305	15,367	4.7	732			
Meadow Springs Farm									
Patty	RH	5-6	305	22,055	3.3	731			
Roy E. Sensenig									
38	RH	8-4	278	21,741	3.3	730			

## Susquehanna County DHIA March, 1990 Lactation Report

Lymanstead Farm									
Cassi	RH	5-2	305	19,519	933				
Lyn Nan Farm									
Dulcie	RH	8-5	305	24,170	1063				
Walter E Brooks									
#Sherri	RH	3-7	305	18,682	915				
James Swetter									
Burnt	GH	9-0	305	20,798	855				
Country Heaven Farms									
Crystal	RH	5-3	305	29,726	955				

## Montour County DHIA March, 1990 Rolling Herd Average

Name	Brd.	No. Cows	% Days in Milk	Milk Lbs.	Fat Lbs.
Carl R Slater & Son	3	37.1	87.0	22,897	806
Mar-Ja Farm	3	159.8	91.2	17,164	709
Daryl+Nancy					
Landis	B3	73.2	84.7	18,250	707
William A Vegh	5	9.8	90.2	16,647	696
Ralph Kitchen	B3	40.8	90.5	17,952	681
William A Vegh	B3	49.9	89.8	18,502	676
Ed & Maryann Baker	B3	67.0	89.4	18,055	661
Lundy Brothers	B3	28.0	86.8	17,909	660

**MILK  
AMERICA'S HEALTH KICK**

### HENRY K. FISHER INC. Sandblasting & Spray Painting

Aerial Ladder Equipment  
Farm Buildings — Feed Mills  
Commercial - Industrial  
Repainting — Interior/Exterior

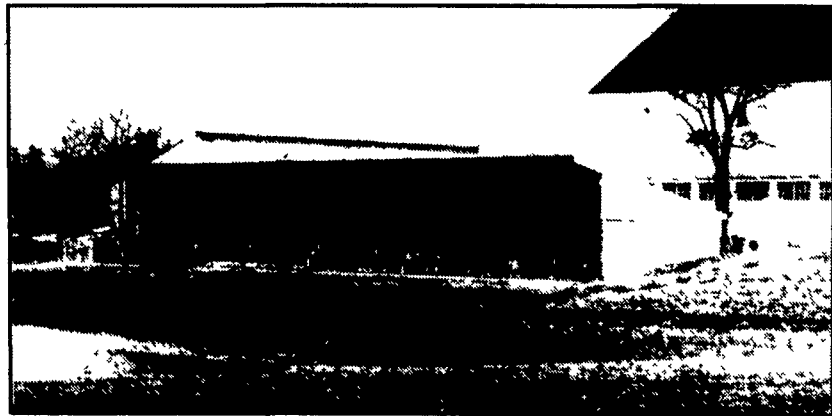
667 Hartman Station Road  
Lancaster, PA 17601  
717-393-6530

HAY, STRAW,  
EAR CORN,  
PEANUT HULLS

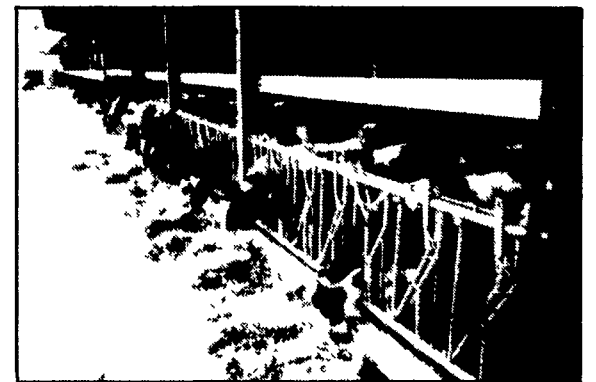
At farm or delivered in any  
quantity as you require.

**Esbenshade  
Turkey Farm**

(America's Oldest)  
Paradise, Pa.  
(717) 687-7631



## CONCRETED SLATTED HEIFER BARN



ALSO...

- Complete line of H&J Bunks
- Hog & Cattle Slats
- Concrete Hog Penning
- Concrete Post & Beams
- Large percentage of openings keep slats clean and dry
- No hoof or leg problems
- Steam cured reinforced high strength concrete

For Complete Details On  
Heifer, Cattle And Free Stall Barns  
Contact

## SYRI-CON PRECAST CONCRETE CORP.

477 E. Farmersville Rd., New Holland, PA 17557

717-355-2361

### 1990 BARN PAINTING Latest Developments

- PREPARATION** - High volume water blasting at 1,000 lb. pressure re-surfaces barn siding into a smooth (like new) appearance!
  - Performed by professionals quickly at reasonable cost.
  - By yourself with your own or rented equipment.
  - Or other more conventional methods
- APPLICATION** - To insure better adherence to this super prepared surface, use the best fine bristle brush in four directions to evenly distribute the recommended mil thickness of seal coat coverage
- SPECIALIZATION** - Every barn is different but generally it's best to use a high quality mildew resistant product, specially formulated to meet the requirements of this partially weathered wood that was and will be weather stressed.
- WARNING** - The modified oil latex is less effective as a wood preserver and actually increases nail & metal deterioration. Deal with home people. At their rates, I could double mine. Estimates Evaluations Latest Equip.



PHARES S. HURST  
RD 1 - Box 503, Narvon, PA 17555  
Misplaced your name and phone number. Please call again.  
215-445-6186

BRUNING PAINT