

FDA Approves Sale Of Bioengineered Food Ingredient

According to the April issue of Dairymen News, The Food and Drug Administration (FDA) on

March 26 gave Pfizer, Inc., the go-ahead to sell the first genetically engineered food ingredient.

The FDA declared safe for human consumption Pfizer's bio-engineered copy of rennin, the natural enzyme widely used by the dairy industry to make cheese.

Pfizer uses a common strain of bacteria (*Escherichia coli* K-12) to produce its genetically engineered rennin. The calf gene carrying the genetic code for natural rennin is

implanted in the bacteria. The altered bacteria, in turn, produce rennin that is identical to the natural enzyme.

It took the FDA 29 months to approve Pfizer's petition, because agency officials had to satisfy themselves that the product didn't pose any environmental threat and

it coagulated milk at the same rate as calf rennin.

Biotechnology experts see Pfizer's product as only the first in a wave of genetically engineered enzymes that will eventually win FDA approval. Other firms are currently seeking FDA approval for bioengineered milk coagulants.

Farm Calendar



(Continued from Page A10)

(Penn State Extension), (215) 489-4315.

- Sunday, June 3**
Washington Co. Sheep & Wool Field Day, Washington Fairgrounds, 11:00 a.m.
- Monday, June 4**
- Tuesday, June 5**
Lancaster Co. Plant Disease Clinic, Lancaster Farm and Home Center, 7:00 p.m.-8:00 p.m.
- Wednesday, June 6**
Pa. Rabbit Conference, June 6-9, Montgomery Co. Creamery

- Thursday, June 7**
- Friday, June 8**
Delmarva Chicken Festival and Cooking Contest, Easton, Md., thru June 9.
- Saturday, June 9**
Delmarva Chicken Festival and Cooking Contest, Easton, Md. Northeast Ohio Dairy Goat Association Annual Show, Randolph Fairgrounds, Randolph, Ohio, thru June 10.

Wye Headquarters Dedicated

COLLEGE PARK, MD — The Wye Research and Education Center is acquiring a new look.

Maryland's Agricultural Experiment Station has awarded a \$2.25 million contract to Willow Construction Inc. of Easton to construct a 16,000-square-foot headquarters at Wye.

The new headquarters will provide wet and dry laboratories

for researchers, as well as office space for Center staff and Cooperative Extension Service specialists.

Construction began May 1; the project is scheduled for completion in May 1991. Located near the Wye Narrows, the new headquarters will be named after the late Mr. Arthur A. Houghton Jr.

A formal dedication ceremony

will be held at the August 23 Wye Field Day. Mr. Houghton, a generous supporter of the University of Maryland, played a key role in the formation of the Wye Research and Education Center.

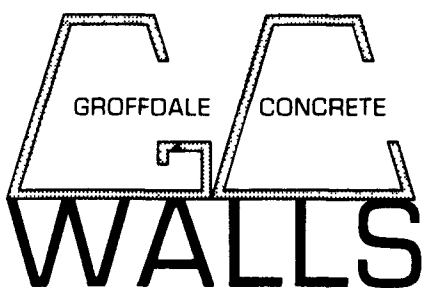
Beginning in 1966, Houghton, through the Wye Institute, made 100 acres available for University research. His total land gifts through the Wye and Aspen Institutes now include more than 420 acres of land, in addition to the rent-free use of an additional 400 acres.

He also donated his world-renowned Wye Angus Herd to the University of Maryland Foundation in 1978. This gift included an endowment to support the herd.

The Wye Research and Education Center, consisting of nearly 1,000 acres, is located on the Wye River in southern Queen Anne's County. One of four Agricultural Experiment Station Research and Education Centers, the Wye Center was formally established in 1982.

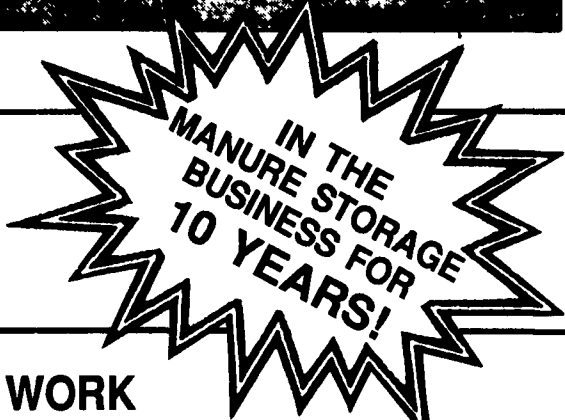
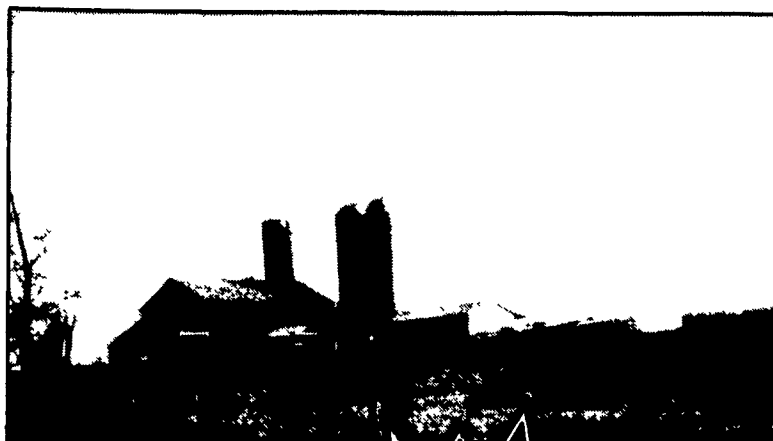
The Center's unique location makes it an ideal site for assessing agriculture's effect on the Chesapeake Bay. Research projects include the tracking and recovery of excess plant nutrients, the testing of alternatives to agricultural chemical use, and quantifying the effects of these chemicals on aquatic life. These studies are helping Maryland reach the 40-percent nutrient reduction goal established by the multi-state Chesapeake Bay Agreement.

In addition to water quality and aquaculture, research at Wye focuses on integrated pest management, plant breeding and genetics, Angus breeding and genetics, quality of life studies and energy development, use and conservation.



INC.

148 Brick Church Road
Leola, PA
717-656-2016



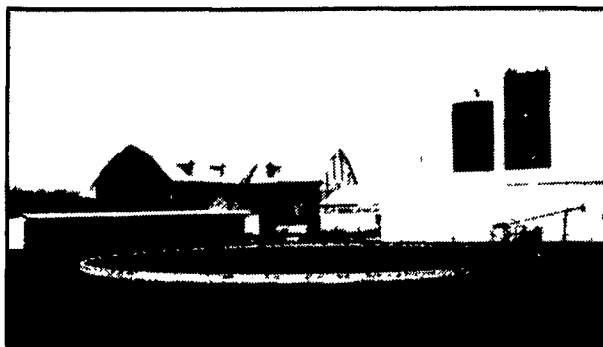
Thanks To The Farmers Who Made It Possible For Us To Build 40 Circular Manure Storage Tanks In 1989!

LET OUR 10 YEARS EXPERIENCE WORK FOR YOU! WE ORIGINATED THE CONCRETE SYSTEM!

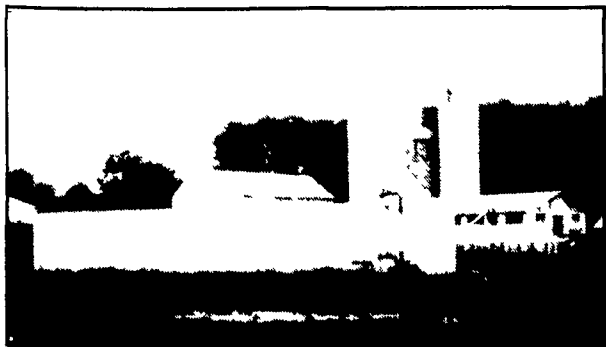
- WORKING WITH FARMERS WITH CHESAPEAKE BAY FUNDING -



FEATURING TRACTOR GUARD FOR SCRAPING FEED LOT



IN-GROUND MANURE STORAGE SYSTEM



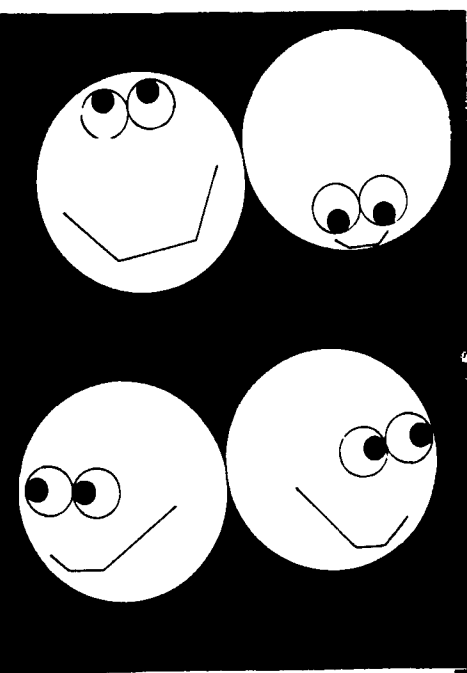
ABOVE-GROUND MANURE STORAGE TANK WITH SIDE-MOUNT PUMP



PARTIAL IN-GROUND TANK FEATURING COMMERCIAL CHAIN LINK FENCE (5' High - SCS Approved)

Our Sales Tool Is A Satisfied Customer -
Call Us For Information!
WE'RE NOT SATISFIED UNTIL YOU ARE!

SIZES AND LAYOUTS TO YOUR SPECIFICATIONS!



DON'T LOOK ANY FURTHER!
YOU'LL FIND IT IN LANCASTER FARMING'S CLASSIFIEDS