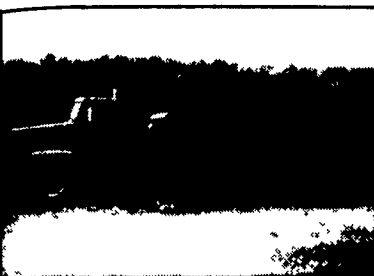
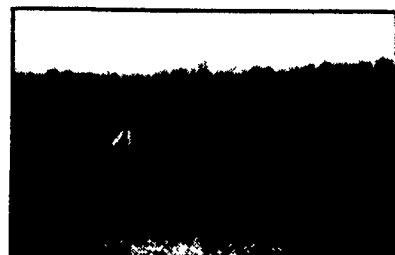


1974 Ford Truck with mounted 410 Knight manure spreader. Good condition \$13,000. Call Jim - (717) 789-3960



1973 FWD 10 Wheel drive trucks with 540 Meyers equalizer manure spreaders. Excellent for chicken manure. \$30,000 each. Good Condition. Call Jim - (717) 789-3960.

BEARTOWN HYDRAULICS

Rt. 322, Midway Between Honey Brook & Blue Bell
Monday-Friday 7 AM - 5 PM
New Jacks Call for Sat. & Even. Hours Daily UPS
Below W-Sale (717) 354-5649 Pickup
(USA) Ron Zimmerman

★ SPECIALIZING IN JACKS ★
2nd Generation Of Quality =
Volume Pricing

- Norco 2 1/2 Ton Floor Car Jack, Model 71225-China, 1 Year Warranty \$109
 - Norco 22 Ton Air-Hyd. Truck Jack Model 72200-Japan Net \$629
 - Lift-Rite Pallet Jack, 5000 Lb. Cap., 27x48, Made in Canada..... Net \$429
 - Gray Tow Motor Jack, 4 Ton, Model FLJ400A-SY-8000..... Net \$745
 - U.S. Jack Transmission Jack, 1 Ton, Model D51404..... Net \$899
 - U.S. Jack 10 Ton Safety Stands Model D41608 Pr..... Net \$149
 - Other Lincoln * U.S. Jack * Norco = 25% Discount
 - Gates 10,000 PSI Hose And Enerpac 10,000 PSI Couplers
- ★ Special Terms For Established Accounts ★

COMING SOON -
COMPLETE LINE OF HOSE
(Up to 4 Spiral - Weatherhead)



1977 FORD LNT8000
Tandem Cab & Chassis, 477 Gas, P.S., Air Brakes, 5x4 Trans., 166" Cab to Center of Tandems, 44,600 GVW. Asking \$7,500.00.
Let's Deal
Call Toll Free For Details
1-800-345-2829

TRAILERS - "Big & Little"

9-TON EQUIPMENT, 3-AXLE \$2999
16' CAR HAULER, LOADED \$1369
UTILITIES, FROM \$439 TO \$1369
DETAILS IN OUR FREE CATALOG



TRAILER PARTS - LIGHTS, CHAINS
HANGER KITS, WIRE HARNESS, ETC., ETC.

Performance Products

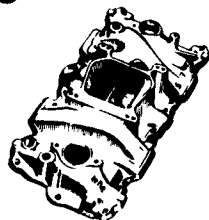
PRESSURE TYPE SAND
BLASTERS.

USA MADE, JUST ADD SAND
AND AIR, FREE DELIVERY
46 STATES 3 MODELS

- #40 \$189
- #70 \$219
- #100 \$269
- #300 \$599



Holley



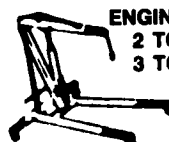
DEPARTMENT 002
4294 EAST HARRISBURG PIKE
MIDDLETOWN, PA 17057
ON ROUTE 230 BETWEEN
MIDDLETOWN & ELIZABETHTOWN

WE SELL

- ★ SK-Hand Tools
 - ★ Skil-Power Tools
 - ★ IR-Air Tools
 - ★ Sand Blasters
 - ★ Lots Of Large Truck Tools & More.
- "Get Our Catalog"



AIR COMPRESSOR
5 HP, ASME CODED
TANKS FROM
\$499 TO \$1199
7 1/2 HP 80 GAL
TANK, SINGLE
PHASE MOTOR
\$1399
ALL UNITS COME
WITH MAG-STARTER
MOUNTED & WIRED
IF REQUIRED
PORTABLES AVAILABLE



ENGINE CRANE
2 TON .. \$299
3 TON .. \$799

"FREE CATALOG"
CALL or WRITE
(717) 944-0318



"AUTOBODY PARTS"
"PAINTS & SUPPLIES"
FENDERS 73-79 CHEVY & FORD PICKUP
AND MANY MINI PICKUPS \$39.95 EA
WINDSHIELDS CHEVY FORD FULL
SIZE S-10 BRONCO II ETC \$89.95 UP
RADIATORS & HEATER CORES
POPULAR UNITS RADS \$79.95 UP
CORES \$27.95

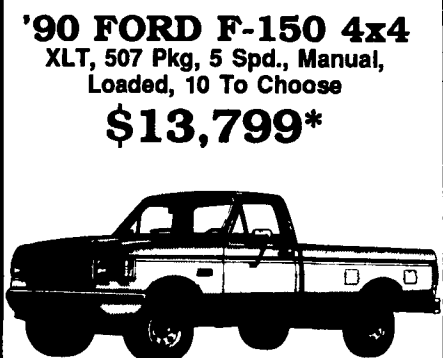
Mark VII - Pickups - Broncos - Bronco II - Stake Body - Crew Cab -

For All Your Farming And Recreational Transportation Needs!

BRONCOS DIESEL PICKUPS CHASSIS CAB CARGO VANS 4x4 RANGERS PICKUPS
BRONCO II SUPER CAB CREW CAB STAKE BODY BOX VANS XLT CUSTOM VANS



'90 FORD F-150
Manual Trans., Limited Time Special
Offer, 3 To Choose From
NOW ONLY \$9,999*

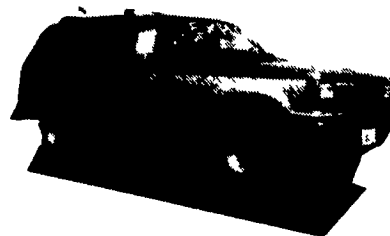


'90 FORD F-150 4x4
XLT, 507 Pkg, 5 Spd., Manual,
Loaded, 10 To Choose
\$13,799*



'90 RANGER
XLT 4x2
Two-Tone, Man. Trans., 17 To
Choose From
NOW ONLY \$8,499*

1991 EXPLORER
NOW IN STOCK!



'88 GMC SIERRA
Diesel, AT, PS, PB, AC, Cruise,
AM/FM, Cap, Nice Truck
Was \$10,899 NOW \$9,899



'89 F-250 DIESEL XLT
5 Spd., PS, PB, AC, AM/FM,
18,000 Mi.
Was \$13,899 NOW \$12,899



'89 F-250 4x4
SUPERCAB XLT
351, 5 Spd., PS, PB, AC, PW, PDL,
AM/FM, Tilt, Cruise, 9,000 Mi.
Was \$16,899 NOW \$15,899



'86 CHEVY
CREWCAB
454, 4 Spd., PS, PB, Running Bd.
Was \$11,899 NOW \$10,999

* Price Includes
Applicable Rebates

Unless This Emblem Is On Your Car Or Truck You Probably Paid Too Much

SHEEHY LEBANON

9-9 Daily
9-5 Sat.
717-272-7671

Parts Dept. Open
Daily 8-5
Sat. 8-12
717-273-8168

SHEEHY FORD LINCOLN MERCURY INC.

20th & Cumberland St., Lebanon



Tempo - Cougar - Continental - Town Car - 4x4 - Box Van - Rangers -

Custom Vans - XLT - Grand Marquis - Marquis

Lynx - Topaz - Diesel Pickups - Mustang - T Bird