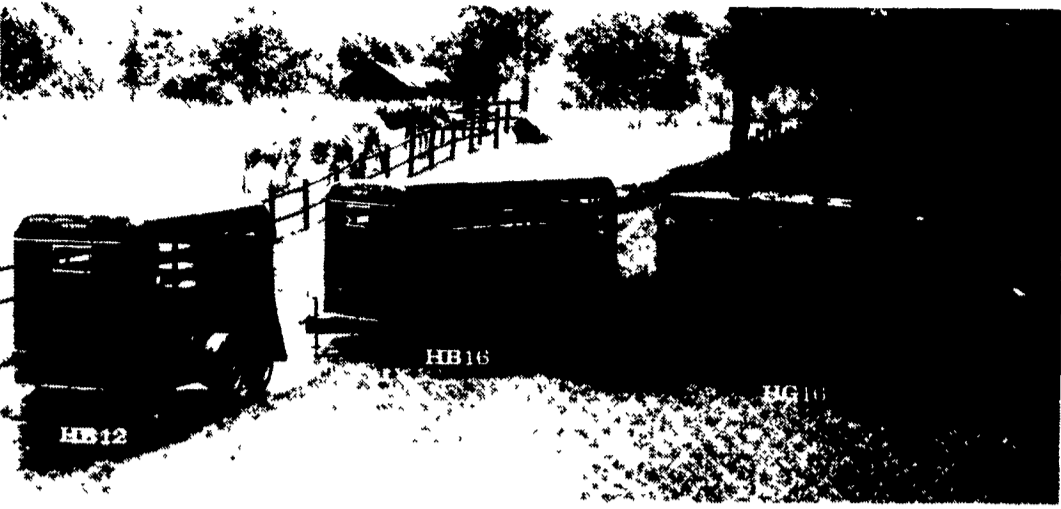


★★★★ TRAILER ENTERPRISES ★★★★★ IS BUILDING A REPUTATION

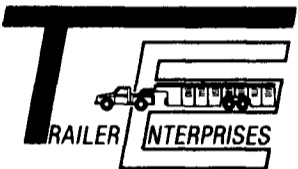


From Livestock Transport - to- Heavy Industrial Moving.. We serve **YOU!!** Call **NOW** and give us the opportunity to help, with **ALL** Your Trailer Needs! Financing and Leasing To Qualified Buyers. Trailer Enterprises is also your area distributor for Owens heavy-duty car dolly.

**HORSE * STOCK * GOOSENECK * FLATBEDS *
INDUSTRIAL * UTILITIES OF ALL KINDS ***

"Revvin' to take care of ALL your trailer needs."

120 Pine Drive
Greencastle, PA 17225
Phone 717-597-5611



Arvin Martin
James Martin
Res. 301-791-9751

Parker 28' aluminum dump trailer, good condition, \$6,900. 717-463-2161

Parkhurst 6x12' tandem axle trailer, fully enclosed, electric brakes, \$1650.00. 717-266-0279 after 6pm.

Sale: Storage trailer 1966 gindy 40', asking \$1,000. Berks. (215)376-8436.

TIRONIE'S TARPS. SHIPPED ANYWHERE. 717-584-2928 anytime.

Used 16' Omaha standard, super duty w/head board. 717-222-9020

Auxiliary gas tank for Ford pickup w/gaslines and in-tank fuel pump. Franklin County. (717)349-7281.

(2) brand new '89 Fleetwood 8' boxes, Chevy pickup. 717-222-9020

22'-insulated body, RS, CS doors, roll up rear door, \$5000.00. 302-378-0611.

30' tandem dually vacuum brakes, beavertail wench, plus pin for F350, \$4,900 OBO. (717)949-2536.

FOR SALE
1985 INTERNATIONAL TRUCK
33,000 GVW, DT 466 Engine,
5-Speed, 2-Speed Rear,
10.20 Radial Tires
215-944-8233

WANT A GOOD BUY ON A USED CAR OR TRUCK??

We Sell Over 100 Pre-Owned Units Monthly!

WHY?

- We Average 100 Used Cars & Trucks Sold Monthly!
- Up To \$1,000,000 Inventory In Stock!
- We Offer Factory Warranty On Late Model Cars!*
- We Offer 3 Free Oil Changes & 2 State Inspections!*
- Award Winning Service Department!



DODGE - CHRYSLER - PLYMOUTH
Route 422 West Of Wernersville
(215) 693-5855 - (215) 678-3488 - 1-800-992-6275
*Not All Used Vehicles Covered By Warranty—*On Most Models.*



HAMILTON GMC TRUCK

"A COMMITMENT TO EXCELLENCE"

Something A Little Different

Sales • Service • Parts (717) 665-2271

E. High St., 55 Doe Run Rd., Manheim, Pa. 17545



Lancaster County's **ONLY**
Certified GM Medium Duty Dealer!

GMC NEW & USED LIGHT & MED. DUTY TRUCKS

It's Worth The Trip To
Hamilton GMC!

CARGO VANS

4.3 Auto, #176 \$12,999

V8 AUTO.

Stock #9535 \$15,499

MEDIUM DUTY
C5
C6
C7

IN STOCK-READY FOR DELIVERY

V8 AUTO

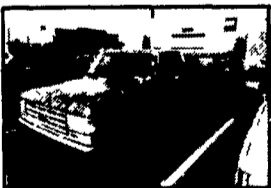
Stock #9431 \$12,499

454 Auto A/C

Stock #193 \$17,999



87 Chevy K Blazer, 4x4, 40,000 miles, V8, Auto Loaded, #9547A
Was \$12,995 Now \$12,495



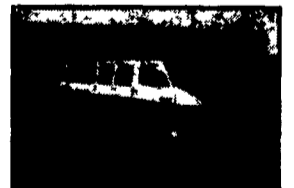
88 Ford, 6 Cyl., 4 Spd, PS, PB, Tilt & Cruise, #113A,
Was \$9,995 Now \$9,495



88 Chevy Suburban, 4x4 Silverado, Loaded, 30,000 Miles, #9458,
Was \$18,495 Now \$17,995



87 Ford XLT Lariat, 4x4, V8, 4 Spd., 1 Owner #9691A,
Was \$11,995 Now \$11,495



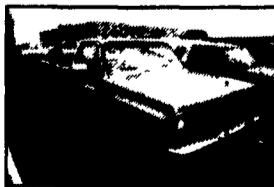
87 Dodge LE Van, 15 Pass, V8, Auto, PS, PB 1 owner, #121A,
Was \$10,495 Now \$9,995



88 Dodge Ram Charger, LE, 4x4, Loaded, Local, 1 Owner, V8, Auto, 19,000 Miles, #101A,
Was \$13,995 Now \$12,995



86 Ford F150 XLT Lariat, 4x4, V8, Auto, Loaded, Local 1 Owner, #158A, Was \$10,495 . . . Now \$9,995



80 GMC 1500 4x4, Sierra Grande, V8, Auto, 45,000 Miles, #209B,
Was \$4,995 Now \$4,495



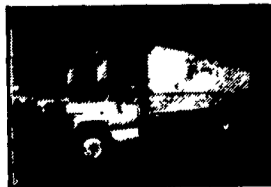
88 Chevy S10 Pickup, PS, PB, V8, Auto, 30,000 Miles, #5041
Was \$7,995 Now \$5,995



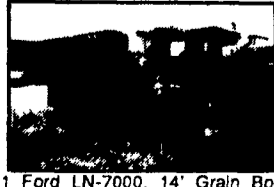
88 Chevy K10, 4x4, Cheyenne, V8, 5 Speed, AC #9649A
Was \$11,995 Now \$9,995



87 Step Vans - Low Miles!, 4 Cyl Cummins
As Low As \$12,500



82 86 GMC C-70's, 366 & 5 Speeds 18 to 24' Bodies As Low As \$5,995



81 Ford LN-7000, 14' Grain Body, 3208 Cat Diesel, 31,000 GVW, 5 Spd, #6217
Was \$18,995. Now \$16,995



84 Ford Ranger, PS, PB, Air w/Cap, #168B, Was \$5,495 Now \$4,495



78 Ford LN-8000 Dump, 3208 Cat, 31,000 GVW, #6122,
Was \$21,900 Now \$18,999