

1987 Mack Mid-liner, 22'-stake body, air brakes, pintle hook, 20000LB pay load, very good condition, \$ 2 0 , 5 0 0 0 0 . 800-878-8020.

'88 Ford F150, HD, 1/2 ton, 300 EFI, HD 4 spd., PS, PB, AM-FM, dual tanks, 6,250 GVW, 15,000 miles, blue, \$ 8,350. 717-733-2873

'88 Chevy Scottsdale 1500, 1/2 ton, 43 V6, 5 spd., PS, PB, AM-FM, brown & tan, excellent condition, \$ 7,450 717-733-2873

'88 Dodge B350 15 passenger maxi van, 360 auto., PB, PS, dual air & heat, dark blue, 8,000 miles, like new, \$13,700. 717-733-2873

62 Ford F500 12' stake, rebuilt engine, \$1,595 (717)626-6788 after 5 p.m

'69 single axle dump truck, good condition, 230 Cummins, 10-spd. trans. \$6,000 OBO. 301-596-9700.

'73 IH 4020A, 33,000 mi. on major, 671 DD, SA, 10-spd., RR, good rubber with 10 ton equip. trailer. \$5,500 OBO. 717-689-2075

1989 Cobra dump trailer, used 6 months; 35' frame; 34' bucket; aluminum 8 hole Budd wheels; roll tarp. 215-683-8590.

2010 Int 10 wheel dump truck, 14' body, gas motor, 5x4 transmission. 301/592-2281 or 301/592-9598.

20' lumber dump w/20 ton hoist and pump, steel w/wood floor, also nylon straps and rollers near center and end of bed. New paint, good condition, \$4,500 OBO. (717)653-1826, (717)653-5936 evenings.

'88 Ford F250, 1/2 ton, 300 EFI, HD, 4 spd., PS, PB, AM-FM, dark blue, \$7,950. 717-733-2873

'88 Ford F250 HD, 1/2 ton, 460, 5 spd., PS, PB, AM-FM, 8,600 GVW, Michelin radials, black, excellent condition, \$8,300. 717-733-2873

'88 Ford XL F150, super cab, 300 EFI, 5 spd., PS, PB, AM-FM, dual tanks, 6,250 GVW, blue & silver, excellent condition, \$9,950. 717-733-2873

'78 Chevy C65 tandem truck tractor, 13 spd. Road Ranger, Henderson susp., 427 engine, wetline, good condition. 717-463-2161

'87 Ford F250 3/4 ton pickup, 6 cylinder, 4 speed, PS, PB, 37,000 miles, \$5,950. (717)865-3488.

'87 Ford XL E350 15 passenger van, 351 auto., PB, PS, cruise, privacy glass, dual air & heat, excellent condition, \$9,300. 717-733-2873

'88 Chevy 1500, 1/2 ton, 4x4, 4.3 F.I., HD, 4 spd., PS, PB, 18,000 miles, like new, \$ 9,950. 717-733-2873

'88 Chevy Silverado 2500, 1/2 ton, 6.2 liter diesel w/new Reading utility body, PS, PB, 24,000 miles, excellent condition, \$10,995. 717-733-2873

'88 Ford XLT Lariat F150, super cab, 302 EFI, 5 spd., PS, PB, cruise, tilt, air, AM-FM, dual tanks, 6,250 GVW, dark blue, 26,000 miles, excellent condition, \$11,500. 717-733-2873

'89 Chevy 2500 HD 1/2 ton, 4x4, 350 EFI, auto., PB, PS, AM-FM, limited slip, 8,600 GVW, 9,000 miles w/balance of factory warranty, like new, \$13,500 717-733-2873

'89 Chevy 2500 HD, 1/2 ton w/Reading utility body, 350 EFI, auto., PS, PB, 8,600 GVW, 18,000 miles, blue, excellent condition, \$12,500. 717-733-2873

TRUCKS, TRUCKS, TRUCKS!

1988 Dodge Pickup...

4 wheel drive, 1/2 ton truck, V8 power, automatic trans., air conditioning, heavy duty hauler, local trade, Chrysler 770 warranty..... \$12,200

1987 Dodge Pickup...

2 wheel drive, 1/2 ton truck, dark blue, V8 power, automatic trans., air conditioning, deluxe interior, very clean truck, 1 owner..... \$8,100

1987 Dodge Dakota Pickup...

Mid size truck, 8 foot bed, V6, two tone blue, power steering & brakes, cloth interior, like new, Chrysler 770 warranty..... \$7,175

1986 Dodge B350 Maxiwagon...

15 passenger seating, vinyl interior, dual air & heat, V8 power, automatic trans., power steering & brakes, one owner trade..... \$10,300

Hours Monday Friday 7:30 A.M. to 8:00 P.M.
Rt 501 N, P.O. Box 352 Lititz, PA 17543 (717) 626 8551

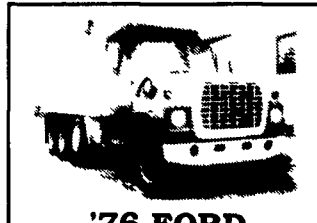
ZARTMAN DODGE

SINCE 1945

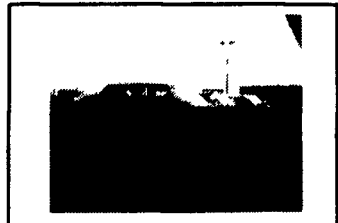
"SPRING" INTO QUALITY USED TRUCKS ETC.



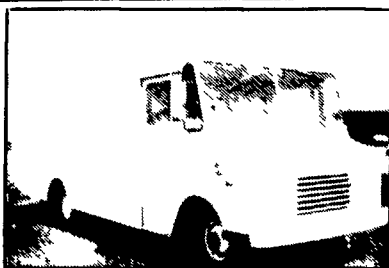
'64 IHC R202
6 Cyl., Gas, 5 Spd., PS,
35,000 GVW, Air Brake,
Self-Contained Spreader,
Plow
\$5,500



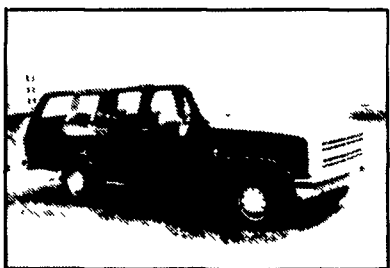
**'76 FORD
LT9000 DUMP**
NTC 290 Eng., 5/4 Trans.,
16,000 Front, 44,000 Rear,
Jake Brake, Lift Axle, 18 Ft.
Aluminum Dump, Air, PTO,
Air Gate
\$19,900



**'88 LINCOLN
TOWN CAR**
Signature Series, Leather
Seat Trim, Antitheft,
Traction Lock Axle, Like
New, Company Car
\$14,500



1986 Chevy Kurbmaster
Hi Cube 16 Ft. Aluminum Step
Van, 10,000 GVW, Dual
Wheel, 6.2 Diesel, AT, PS,
PB, 69,000 Miles, Real Nice
#889
\$7,950



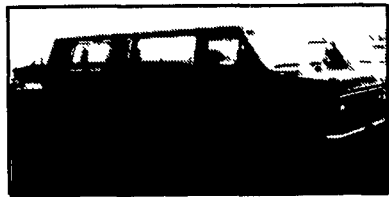
1987 Chevy Suburban
G20 Scottsdale 8 Pass., 454
w/Towing Package, AT, PS,
PB, PL, AC, 39,000 #894
\$11,500



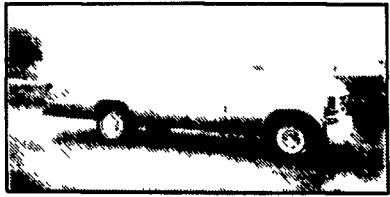
1990 Chev G20
Cargo, EFI 305, ATO, PS, PB,
AC, 6600 GVW, New 70 Miles
#886.
\$11,500



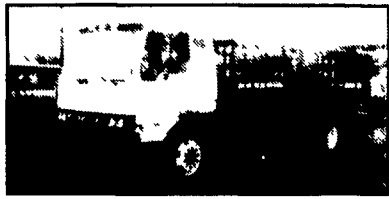
1990 Ford E250
Cargo, EFI 302, ATO, PS, PB,
A/C, 7200 GVW, 3,300 Miles
#840
\$10,800



1988 Ford E350
Super XLT, 15 Pass., FI 460
AT, PS, PB, Dual A/C & Heat,
PW, PL, 43,000 Miles #865
\$12,500



1986 Dodge B250
Maxi Cargo 318 AT, PS, PB,
6400 GVW, 37,000 Miles.
Stock #885
\$5,500

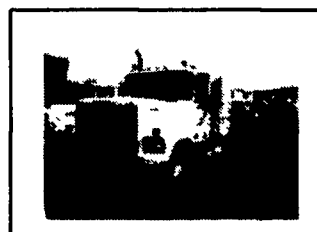


1988 Mitsubishi FUSO
FK 18 Ft. Stake Body, 28,000
GVW, 10x22.5 Radial Tires,
6.6L Turbo Diesel, 5 Speed,
PS, PB, 27,000 Miles. #875
\$17,500

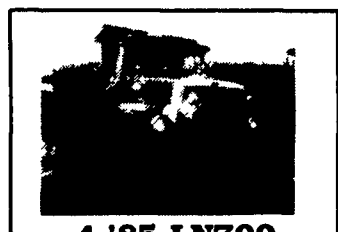
1989 Chevy Beauville, 8 pass.
1988 GMC STX, 8 pass
1988 Ford Aerostar XL, 7 pass.
1987 Chev Beauville, 8 pass.
1987 Chev Beauville, 12 pass.
1987 Ford XLT, 8 pass.
1986 Ford XLT, 12 pass.
1986 Dodge SE, 12 pass.
1985 Chev Beauville, 8 pass.
1985 Chev Beauville, 12 pass.



**'83 KENWORTH
TANDEM DUMP**
3406 Cat, 350 HP Eng.,
8 Spd., Eng. Brake,
14 Ft. Steel Dump Body
w/Tarp
\$34,900



**'86 GMC
GENERAL**
400 Cummins, 8 Spd.,
Owner/Oper. Pkg.,
36" Sleeper
\$29,900



**4-'85 LN700
SINGLE AXLE
DUMP**
Diesel, 5/2, 28,000 GVW,
New 10 Ft. Dump Body,
New Hoist & PTO
Starting
At **\$16,500**



**'85 FORD
LN700 VAN**
205 HP, Diesel, 5/2,
28,000 GVW, 20 Ft. Van
Body w/Gate
2 IN STOCK



**'78 CHEV. C-20
SCOTTSDALE**
350 Gas Eng., 4 Spd., 8200
GVW, 8 Ft. Utility Body
w/Pipe Rack
\$4,495



**'77 MACK
TRI-AXLE DUMP**
6 Spd, 20,000 Front, 58,000
Rear, Lift Axle, Jake Brake,
80% Rubber Around, 17 Ft.
Aluminum Dump
\$24,900



**FORD F-SERIES
CAB & CHASSIS**
'85 F-700, Diesel,
24,500 GVW
**CALL FOR
DETAILS!**



**'77 KENWORTH
W900 TRACTOR**
400 Cummins, 13 Spd.,
Owner/Oper. Pkg., 36" Bunk
\$18,900



**'85 SEA RAY
BOAT 22 FT.
CUTTY CABIN**
230 H.P., 1.0 Mercurier, Low
Hrs., Canvas Top, Port-a-Potty,
Ship-To-Shore Radio, Depth
Finder, Loaded, w/Trailer &
Mooring Cover
\$12,000

KEYSTONE FORD TRUCK SALES, INC.

Interstate 83 at 322 E • PO Box 4194, 470 Penhar Road • Harrisburg, PA 17111

PAUL MYERS, SALES MGR. JON EBY, USED TRUCK MGR.

SALES REPS: BILL VOGEL, CHARLIE KRUGER, BRUCE BINGAMAN & RAY PRICE

SALES 8-6 Monday-Friday

Toll Free (800) 669-6235
(717) 564-6661

Daily Rental or Leasing
Call 717-664-0881

**TRUCKS ARE OUR
ONLY BUSINESS**



FOUR WAY AUTO SALES

770 West Main St., P.O. Box 444, New Holland, PA 17557

Office 717-354-3199 Home 717-354-9422