

**National Grain Market**  
St. Joseph, Mo.

Wednesday, May 9, 1990

USDA DAILY NATIONAL GRAIN MARKET SUMMARY GRAIN PRICES MIXED, MOSTLY HIGHER ON WEDNESDAY. HARD AND SOFT WINTER WHEAT TURNED LOWER AFTER NOON AS MAJOR ELEVATORS SUDDENLY DROPPED THEIR BASIS. CONCERN OVER REJECTION OF A U.S.S.R. BID A MAJOR FACTOR. OTHER WHEATS SHOWED SLIGHT IMPROVEMENT. CORN PRICES SLIGHTLY HIGHER AS FUTURES PRICES ROSE. SOYBEANS SHARPLY HIGHER AS FUND BUYING AND SHORT COVERING AHEAD OF TOMORROW'S USDA REPORT SPURED FUTURES PRICES HIGHER.

UNITED STATES...RAIN AND WET FIELD CONDITIONS CONTINUED TO SLOW FIELDWORK IN ARKANSAS, MISSOURI, KENTUCKY AND TENNESSEE. RAIN ALSO HAMPERED FIELDWORK IN PORTIONS OF THE CENTRAL AND SOUTHERN GREAT PLAINS AND CORN BELT. SOIL MOISTURE WAS ADEQUATE OR ADEQUATE TO SURPLUS IN THOSE AREAS. DRY WEATHER PREVAILED OVER MOST OF THE NORTHERN GREAT PLAINS AND THE WEST, WHERE SOIL MOISTURE WAS GENERALLY SHORT TO ADEQUATE. IN THE EAST, SOIL MOISTURE WAS MOSTLY ADEQUATE EXCEPT IN GEORGIA, FLORIDA AND SOUTH CAROLINA WHERE RAIN WAS NEEDED. USSR...SOAKING RAIN OVER THE CRIMEA, WESTERN NORTH CAUCASUS AND THE LOWER VOLGA BENEFITS WINTER GRAINS APPROACHING THE HEADING STAGE.

EUROPE...UNSEASONABLE WARM AND DRY WEATHER COVERS THE NORTHWEST. RAIN REDUCES DRYNESS IN SECTIONS OF THE SOUTHEAST. SOUTH ASIA...BENEFICIAL RAIN FALLS IN EASTERN RICE AREAS, BUT LOCALLY WET WEATHER IN THE NORTH IS UNFAVORABLE FOR UNHARVESTED WHEAT. EASTERN ASIA...WIDESPREAD RAIN FAVORS WINTER AND SPRING CROPS IN THE NORTH CHINA PLAIN. HEAVY RAIN CAUSES LOCALIZED FLOODING IN SECTIONS OF THE YANGTZE VALLEY AND SOUTHERN JAPAN. SOUTHEAST ASIA...MUCH NEEDED RAIN BRINGS RELIEF TO BOTH THAILAND AND THE SOUTHERN PHILIPPINES. SOUTH AMERICA...DRY HARVEST WEATHER PREVAILS OVER MOST OF ARGENTINA. DRIER WEATHER LATE IN THE

WEEK BASES WETNESS IN SOUTH-CENTRAL BRAZIL. SOUTH AFRICA...COOL WET WEATHER IS UNFAVORABLE FOR MATURING CORN BUT PROVIDES ABUNDANT MOISTURE FOR WINTER WHEAT PLANTING. AUSTRALIA...CONTINUED DRYNESS FAVORS HARVEST AND PLANTING IN THE EAST BUT SLOWS PLANTING IN SECTIONS OF THE SOUTH. NORTHWESTERN AFRICA...WIDESPREAD PRECIPITATION SLOWS WINTER GRAIN MATURATION BUT BENEFITS THAT PORTION OF THE CROP WHICH REMAINS IN THE FILLING STAGE.

EXPORT NEWS: THE PHILIPPINES PURCHASED 35,000 TONNES OF U.S. WESTERN WHITE WHEAT FOR MAY-JUNE SHIPMENT UNDER COMMERCIAL TERMS.

DATE CHANGE YEAR AGO 05/09/90 05/08/90 05/10/89 WHEAT: KANSAS CITY 3.89-3.94 DN 5-4 4.49-4.54 MINNEAPOLIS 4.18-4.22 UP 1/2 4.61 3/4-4.63 3/4 PORTLAND 3.63-3.66 UP 1 4.67-4.71 ST. LOUIS 3.35-3.40 UP 1 4.24-4.30.

CORN, U.S. NO. 2 YELLOW: KANSAS CITY 2.80-2.83 UP 1 2.65-2.70 MINNEAPOLIS 2.78 3/4 UP 1 1/4 2.73 SO. IOWA 2.86-2.89 NC 2.79-2.82 OMAHA 2.72-2.73 UP 2 - 1 2.58-2.61.

SOYBEANS, NO. 1 YELLOW: KANSAS CITY 6.34-6.40 UP 13 7.51-7.56 MINNEAPOLIS 6.28 1/2 UP 11 7.48 1/2 SO. IOWA 6.33-6.39 UP 13 - 12 7.51-7.56 C. ILL. PROCESSORS 6.43 1/2-6.52 UP 14-13 1/2 7.60 1/2-7.68 1/2.

KANSAS CITY, US NO. 1 HARD RED WINTER WHEAT, ORDINARY PROTEIN. MINNEAPOLIS, US NO. 1 DARK NORTHERN SPRING WHEAT, 14% PROTEIN. PORTLAND, NO.

1 SOFT WHITE WHEAT, ST. LOUIS, NO. 2 SOFT RED WINTER WHEAT.

FUTURES CLOSE: KANSAS CITY (JULY) WHEAT 3.56 3/4 UP 3/4 4.35 3/4 MINNEAPOLIS (JULY) WHEAT 3.69 1/2 UP 1 1/4 4.28 3/4 CHICAGO (JULY) WHEAT 3.49 1/2 UP 1 1/4 4.14 3/4 (JULY) CORN 2.90 3/4 UP 1 1/4 2.75 (JULY) SOYBEANS 6.59 1/2 UP 13 7.48 1/2.

EXPORT: BARGE OR RAIL, PORT OF NEW ORLEANS OR NORTH TEXAS GULF. NO. 1 HARD RED WINTER WHEAT ORDINARY PROTEIN 4.17-4.22 DN 9-6 4.91-4.92 NO. 2 SOFT RED WINTER WHEAT 3.70-3.72 NC - UP 2 4.65-4.70 NO. 2 YELLOW CORN 3.14-3.16 UP 1 - NC 3.03-3.04 NO. 2 YELLOW SORGHUM RAIL 5.16 DN 1 BARGE 5.12 UP 2 5.16-5.33 NO. 2 YELLOW SOYBEANS 6.67-6.68 UP 14-12 7.80-7.85.

**New Wilmington Hay**

New Wilmington, PA. Friday, May 4, 1990

Report Supplied by Auction

TOTAL LOADS: 45.  
ALFALFA: 110.00 AND 145.00.  
MIXED HAY: 40.00-150.00, FEW DOWN TO 25.00.  
TIMOTHY: 25.00-57.50.  
CLOVER MIXED: 20.00-50.00, 1 AT 90.00.  
STRAW: 10 LOADS, 30.00-50.00.  
EAR CORN: 6 LOADS, 80.00-110.00.  
OATS: 7 LOADS, 2.10-2.40 BU.

**Westminster Hay**

Westminster, Md.

Tuesday, May 8, 1990

Report Supplied by Auction

TOTAL LOADS: 59.  
ALFALFA: 90.00.  
ALFALFA MIX: 107.00-112.00;  
2.10-2.60 BALE.  
TIMOTHY: 64.00-112.00, 1.30-2.30 BALE.  
TIMOTHY MIX: 87.50, 2.00 BALE.  
GRASS HAY: 1.00 BALE.  
TIMOTHY ROUND BALES: 5.00-12.00.  
ALFALFA ROUND BALES: 28.00.  
MULCH: .75 BALE.  
ORCHARD GRASS: 86.00.  
STRAW: 135.00, 1.40-2.80 BALE.

**Dewart Hay**

Dewart, PA.

Monday, May 7, 1990

Report Supplied by Auction

21 LOADS HAY, 59.00-150.00.  
STRAW: 3 LOADS, 55.0062.00.  
WOOD: 1 LOAD, 19.00.  
CORN: 3 LOADS AT 81.00-89.00.

**North Jersey Market**

Hackettstown, N.J.

Tuesday, May 8, 1990

Hay—Straw & Grain Report

MIXED HAY: 3 LOADS, 1.50-2.50 BALE.  
GRASS HAY: 1 LOAD, 2.10 BAG.  
TOTAL: 4 LOADS.

**Greencastle Hay Market**

Hay & Straw 5/3/90 & 5/7/90

32 LOADS.  
ALFALFA (GOOD) 110.00-160.00/TON; ALFALFA (FAIR) 90.00-117.50 /TON; ALFALFA MIXED 100.00-145.00 /TON; TIMOTHY HAY 70.00-82.00/TON; MIXED HAY 85.00-115.00/TON; ORCHARD GRASS 80.00-95.00/TON; BROOM GRASS 60.00-72.00/TON; STRAW- WHEAT 55.00-65.00/TON; OATS 1.80/BU.

**Leinbach's Hay**

Shippensburg, PA

May 5 and 8

Report Supplied by Auction

TOTAL LOADS: 78.  
ALFALFA: 53.00-220.00.  
MIXED HAY: 54.00-180.00.  
TIMOTHY: 55.00-110.00.  
GRASS: 50.00-127.50.  
STRAW: 50.00-91.00.  
OATS: 2.00-2.12 BU.  
MULCH: 17.50-40.00.

**NY & Phila. Frozen Eggs**

May 8, 1990

Prices were trending lower on all but whites which were generally steady. Trading was about moderate with most buyers closely watching related markets for direction. Offerings were usually heavy with most processors selective and easily maintaining desired schedules. Floor stocks were in good balance to satisfy current needs.

WHOLESALE SELLING PRICES (CENTS PER POUND IN 30 LB. CONTAINERS) U.S.D.A. INSPECTED CLASS TRUCKLOTS LTL (MIN. 25 CONT.) WHOLE 52-54 MOSTLY 53-54 55-60 BLENDS (J) - MOSTLY - 65-75 WHITES 50-53 MOSTLY 51-52 54-62 YOLKS (MIN. 43% SOLIDS) SUGARED 57-60 MOSTLY 58-59 61-70 SALTED 54-57 MOSTLY 55-56 58-67 (J)-WHOLE PLUS YOLK PLUS SWEETENER, GENERALLY 28-32% EGG SOLIDS.

**Lebanon Valley Livestock Auction**

Fredericksburg, Pa.

Tuesday, May 8, 1990

Report Supplied by PDA

CATTLE 161...PDA...Compared with last weeks market: Slaughter cows mostly strong to 1.75 higher. Few Choice slaughter steers 75.25-78.00, few Select and low Choice 68.25-73.75; High Choice & Prime 128.5/1500 lbs. Holsteins 70.25-74.00, Choice 1160/1525 lbs. 64.00-71, few Select 63.75-66.25, few Standard 55.00-61.25. One low yielding Choice sl. heifer 60.25, two Holsteins 58.75&68, few Select 63.00-69, Standard 54.25-59, one Utility 48.50. Few Breaking Utility & Commercial sl. cows 54.50-57.75, Cutter & Boning Utility 52.00-55.75, few 56.75, Canner & Low Cutter 48.75-52.75, Shells down to 40.00. Few Yield Grade 1455/1515 lbs. sl. bulls 63.75-64.50, one No. 2, 1125 lbs. 57.00. Feeder Cattle: Lot Medium Frame No. 1, 860 lbs. bulls 66.00.

CALVES 137...Few Choice vealers 111.00-115.00, few Good 71.00-85.00, few Standard & Good 70/95 lbs. 70.00-80.00, Utility 45/65 lbs. 50.00-74.00. Farm Calves: Hol. Bulls No. 1, 80/125 lbs. 127.00-195, mostly 150.00-189, No. 2, 80/120 lbs. 110.00-155, few down to 96.00; few No. 1, Hol. Heifers 95/140 lbs. 120.00-193.00. Few Beef cross 75/95 lbs. bulls and heifers 81.00-160.00.

HOGS 199...Barrows and gilts mostly steady to 1.00 higher. US No. 1-2 215/240 lbs. 59.85-60.25, two lots 260/265 lbs. 57.75-58.60, 1-3 220/245 lbs. 59.25-60.10, lot 60.50, 2-3 215/245 lbs. 58.00-59.25, lot 1-3 110/190 lbs. 50.00-52.00. Sows 2.00 to 2.50 higher. US No. 1-3 300/470 lbs. sows 51.00-54.50, few down to 47.00, few 490/580 lbs. 56.00-57.00. Few Boars 49.50-50.75.

FEEDER PIGS 0...No Market Test. SHEEP 9...Choice & Prime 40/50 lbs. spring slaughter lambs 65.00-75.00, one 80.00, one low Choice 55 lbs. 60.00. One Slaughter sheep 14.00.

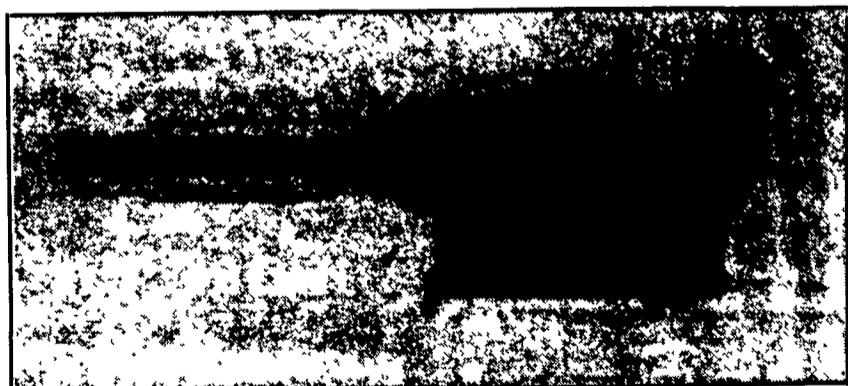
GOATS 5...Few Large 63.00-66.00, two Kids 19.00 - per head.

**MELHORN SALES, SERVICE, TRUCKING CO.**

1010 W. Main St., Mount Joy, PA 17552

**BIOFOGGER**

A Revolutionary Way To Disinfect Your Poultry Or Hog Buildings



- Thermal Fogger Using Bioguard X-185
- Cost Effective Method For Disinfecting

Call For Price On Unit Or For Us To Do The Job For You

The only full service company, in this area, to handle the total needs of the poultrymen.

For More Information Phone: 717-653-1102

Monday - Friday 8:30 AM - 4:00 PM



**FOR PRICES PAID FOR DOWN, CRIPPLED AND AS IS COWS, BULLS AND STEERS**

Slaughtered Under Federal Inspection

Top Prices For All Breeds Of Cull Cows, Bulls & Steers

All Paid On Dressed Weight

**MULVANEY LIVESTOCK SERVICES**

Easton, PA (215) 258-1670 Tom Mulvaney Jr.

HANDLING:

Warren, Hunterdon, Counties, New Jersey

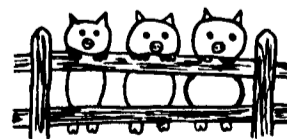
IN PENNA.

Northampton, Bucks, Lehigh, & Parts of Berks, Carbon, Monroe & Schuylkill Counties

**SOYBEAN ROASTING ON YOUR FARM**  
Don't Waste It - Roast It!

This Little Piggy Went To Market, This Little Piggy Stayed Home, This Little Piggy Had...

ROASTED SOYBEANS



Make Higher Profits From All Grains. Roasting Improves TDN, Destroys Mold, Retards Toxins & Removes Moisture.

CUSTOM GRAIN ROASTING DONE IN PA. & SURROUNDING STATES



**DALE L. SCHNUPP**

RD 6, Lebanon, Pa. 17042

PH: 717-865-6611

**DAVID N. GROFF**

RD 1 Box 506C

Lewisburg, Pa 17837

717-966-3593

**ALLEN SUMMERS**

703 E. Christine Rd.

Nottingham, Pa. 19362

215-932-4761