

Grantsville Livestock

Grantsville, Maryland

Sat., May 5, 1990

HOGS: TOP BARROWS & GILTS 56.50-59.50; HEAVY BUTCHER 50.50-59.00; LIGHT BUTCHER 42.00-57.50; BUTCHER SOWS 45.00-53.00; FEEDER SHOATS 11.00-52.00.

VEAL: GOOD 1.00-1.25; STANDARD 90.00-95.00; UTILITY 60.00-80.00; BULL CALVES 1.05-1.90; CALVES RETURNING TO FARM 1.50-2.80.

SHEEP & LAMBS: GOOD 60.00-64.00; UTILITY 50.00-55.00; SLAUGHTER EWES 15.00-20.00.

SLAUGHTER CATTLE: STEERS GOOD 70.00-72.50; STANDARD 65.00-68.50; UTILITY 58.00-62.00. HEIFERS: GOOD 65.00-71.50; STANDARD 60.00-62.50; UTILITY 53.50-58.00.

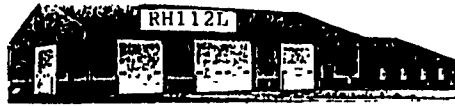
COWS: COMMERCIAL 50.00-58.50; UTILITY 42.00-48.00; CANNER AND CUTTER 40.00 AND DOWN.

BULLS: COMMERCIAL & GOOD 62.00-70.00; CUTTER & UTILITY 55.00-60.00.

STOCK-FEEDER CATTLE: GOOD 80.00-95.00; MEDIUM 65.00-75.00.

STEER CALVES: GOOD 85.00-1.25; MEDIUM 70.00-80.00.

HEIFER CALVES: GOOD 75.00-1.10; MEDIUM 55.00-70.00.



Diffenbach's New Holland Auction Center, Ltd.
100 WEST JACKSON ST. • BOX 485 • NEW HOLLAND, PA. 17557
PHONE (717) 355-7253 (717) 393-4464 (717) 354-3297

You Can Buy

You Can Sell

HAY SALE EVERY MONDAY- 10:00 A.M.

1990 SPECIAL SALES

MAY 1990						
S	M	T	W	T	F	S
-	-	1	2	3	4	5
6	7	8	9	10	11	12
13	14	15	16	17	18	19
20	21	22	23	24	25	26
27	28	29	30	31	-	-

JUNE 1990						
S	M	T	W	T	F	S
-	-	-	-	1	2	3
4	5	6	7	8	9	10
11	12	13	14	15	16	17
18	19	20	21	22	23	24
25	26	27	28	29	30	31

JULY 1990						
S	M	T	W	T	F	S
1	2	3	4	5	6	7
8	9	10	11	12	13	14
15	16	17	18	19	20	21
22	23	24	25	26	27	28
29	30	31	-	-	-	-

AUGUST 1990						
S	M	T	W	T	F	S
-	-	-	1	2	3	4
5	6	7	8	9	10	11
12	13	14	15	16	17	18
19	20	21	22	23	24	25
26	27	28	29	30	31	-

SEPTEMBER 1990						
S	M	T	W	T	F	S
-	-	-	-	-	1	2
3	4	5	6	7	8	9
10	11	12	13	14	15	16
17	18	19	20	21	22	23
24	25	26	27	28	29	30

OCTOBER 1990						
S	M	T	W	T	F	S
-	1	2	3	4	5	6
7	8	9	10	11	12	13
14	15	16	17	18	19	20
21	22	23	24	25	26	27
28	29	30	31	-	-	-

NOVEMBER 1990						
S	M	T	W	T	F	S
-	-	-	-	1	2	3
4	5	6	7	8	9	10
11	12	13	14	15	16	17
18	19	20	21	22	23	24
25	26	27	28	29	30	-

DECEMBER 1990						
S	M	T	W	T	F	S
-	-	-	-	-	1	2
3	4	5	6	7	8	9
10	11	12	13	14	15	16
17	18	19	20	21	22	23
24	25	26	27	28	29	30

- SAT. MAY 12 9:00 A.M. Joe E. Stoltzfus, 731 Nottingham Rd., Peach Bottom, Pa. Shop Equipment and Tools (On the Farm)
- FRI. MAY 18 9:00 A.M. Farm Equipment & Supplies
- SAT. JUNE 2 9:00 A.M. Consignment Auction Antique Furniture.
- FRI. JUNE 15 9:00 A.M. Farm Equipment & Supplies
- SAT. JUNE 30 10:00 A.M. Bertha Shirk, Paradise. Real Estate, HH Goods & Antiques. (On the premises)
- FRI. JULY 13 9:00 A.M. Farm Equipment & Supplies
- TUES. & WED., JULY 24 & 25 9:00 A.M. Quilts, Crafts, & Buggies
- FRI. AUG. 17 9:00 A.M. Farm Equipment & Supplies
- TUES. AUG. 28 6:00 P.M. Guns of all descriptions
- TUES. SEPT. 4 6:00 P.M. Lawn Mowers & Garden Equipment
- FRI. SEPT. 14 9:00 A.M. Farm Equipment & Supplies
- TUES. SEPT. 25 6:00 P.M. Guns of all descriptions
- SAT. OCT. 6 9:00 A.M. Camp Deer Park Benefit Auction
- FRI. OCT. 12 9:00 A.M. Farm Equipment & Supplies
- TUES. & WED., OCT. 23 & 24 9:00 A.M. Quilts, Crafts, & Buggies
- FRI. NOV. 9 9:00 A.M. Farm Equipment & Supplies
- SAT. NOV. 24 9:00 A.M. Toys, Crafts, Gifts, & Tools

**Contact Us For Rates
And Dates For Your Sale**

ADD YOUR SALE TO THIS LISTING NOW!
Diffenbachs AucTs. 225L
Bonded Licensed Livestock Dealer and Order Buyer

**Equipped And Ready
To Serve You**

**SHORT NOTICE
HORSE SALE
FRIDAY EVE., JUNE 1**

**NEW HOLLAND SALES STABLES INC.
THE ACTION AUCTION**

**REGISTERED HEIFER
SALE
SATURDAY, JUNE 9**

LIVESTOCK IS OUR ONLY BUSINESS

MONDAY

SLAUGHTER HOGS

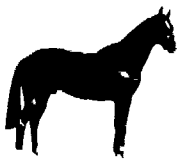


**EARLY BIRD HOG SALE
7:30 A.M.**

Sell Your Hogs At New Holland Sales Stables, Inc.
See them weighed, sold and pickup your check.

10:00 AM

HORSES MULES



1:30 PM

BEEF SALE

SHEEP



CALVES

WEDNESDAY

DAIRY 11:00 AM COWS

HEIFERS BULLS



We have the usual run of 50 to 100 Heifers, all ages.
Loads of fresh cows and springers from our regular shippers.
Also some local fresh cows and springers.

1:30 P.M.

FEEDER PIG SALE

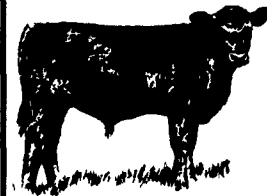


Pigs are accepted after 6:30 A.M. State graded from 8 to 12
Dairy Barn and Feeder Pig Barn are cleaned and disinfected weekly for your protection.

THURSDAY

**Beef Auction
10:00 A.M.**

BULLS STEERS BEEF COWS



STOCKERS & FEEDERS

1:30 P.M.

SHEEP GOATS CALVES



NEW HOLLAND SALES STABLES, INC.

12 Miles East of Lancaster Off Route 23, New Holland, Penna.

MANAGERS

Norman & David Kolb - 717-397-5538

Field Representatives

Luke Eberly - 215-267-6608 738-1865

Homer Eberly - 215-267-3047

Sale Barn Officer Manager
Roger Floyd - 717-354-4341

Order Buyer

Paul Good - 215-445-6662

Feeder Pig Representative

Mei Hoover - 717-354-8397