

Governor's Conference To Focus On Future Of Forests

COLLEGE PARK, Md. — Prospects for Maryland's 2.4 million acres of forest land will receive high priority May 21 and 22 during the Governor's Conference on Trees and Forestry in the Ramada Inn at Annapolis.

Maryland residents who attend will have opportunity to help shape policy that will affect the status of trees and forests in the state for many years. The public is invited to participate.

Key objectives of the conference are as follows:

- Distinguish, elevate and plan for forestry's continued economic, social and environmental contributions.

New Quality Assurance Program

COLUMBUS, Ohio — ProScience Corporation has implemented a new quality assurance program in an effort to make the ProStaph I™ Staph. aureus test more consistent and accurate.

According to Dr. Tatsuo Matsushita, vice president of technical operations at ProScience, this new program will ensure quality in DHIA labs by evaluating the performance of participating DHIA labs and DHIA lab technicians who run the ProStaph I™ test.

"The new quality assurance program has been in place since February and our primary objective is to ensure consistent results across the country from month-to-month," said Matsushita. "All labs are required to run these samples twice monthly to establish repeatability."

"It's been a year since we've introduced this new ELISA technology to the DHIA System and we feel it's our obligation to set up a quality assurance program as this for the benefit of DHI members," he said. "The skill levels of DHI lab technicians who are using this technology have already increased as a direct benefit of the program. We're committed to make this program successful."

ProScience's Quality Control Group, along with researchers at its subsidiary VMRD in Pullman, WA, provide some of the clinical expertise for the ProStaph I™ quality assurance program. Outside scientists also audit the quality certification and manufacturing process at ProScience as part of this program.

"We view our quality assurance program as a team effort between ProScience and DHIA labs. It will also be enhanced by being part of the National DHIA Quality Certification program," Matsushita said.

- Enhance public recognition of the importance of trees and forestry to the future of Maryland.

- Unite and focus political action on Maryland's forest resources, along with public commitment to that goal.

- Develop action-oriented legislative initiatives for trees and forestry in Maryland.

A steering committee developed the conference agenda, based on the findings of a 33-member task force appointed by Gov. William Donald Schaefer.

Representing a cross section of private industry, non-profit organizations and government agencies, the task force examined key issues affecting the future of trees

and forestry in Maryland.

The task force divided itself into three working groups to give separate attention to the topics of social land use, economics, and environmental considerations.

Following the conference, the task force will present recommendations and a final plan of action for consideration by Gov. Schaefer and his Commission on Growth in the Chesapeake Bay Region.

Registration cost for the two-day conference, including the evening banquet, is \$40 before May 15, or \$50 at the door. Students may attend for \$25. Anyone who registers before the May 15 deadline will receive advance copies of the task force report.

Printed programs and registration forms are available from the Forest, Park & Wildlife Service, Maryland Department of Natural Resources, 580 Taylor Ave., Annapolis, Md. 21401; phone: (301) 974-3776.

The brochures can be picked up at offices of the University of Maryland Cooperative Extension

Service in every county throughout the state and in Baltimore. Or you may contact one of the regional Extension natural resources specialists. In the Eastern Shore—Robert L. Tjaden, Wye Research & Education Center, (301) 827-8056; or in Western Maryland—Jonathan S. Kays, Western Md. REC, (301) 432-2735.



READ LANCASTER FARMING FOR COMPLETE AND UP-TO-DATE MARKET REPORTS

STORAGE BARNs & GAZEBOS

— Custom Made To Order —



If You're Looking For Quality At A Good Price, Contact

B & B STRUCTURES

DELIVERY AVAILABLE

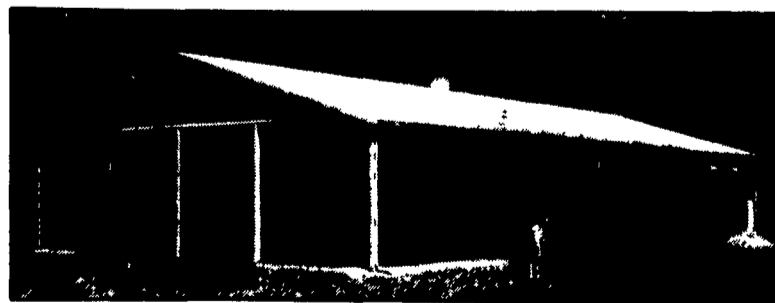
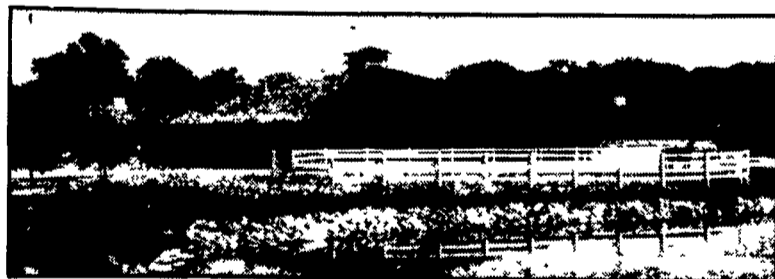
Henry K. Blank
RD 1, Bird-In-Hand, PA 17505
(717) 656-0783

Dealer Inquiries Invited

MORTON BUILDINGS

Since 1903

- Horse Barns
- Riding Arenas
- Garages
- Warehouses
- Offices
- Shops
- Equipment Storage
- Aircraft Hangars



MORTON BUILDINGS, INC.

Excellence — Since 1903

CONTACT:

3368 York Rd.
Gettysburg, PA 17325
717/624-3331

P.O. Box 126,
Phillipsburg, NJ 08865
201/454-7900

P.O. Box 361
Centre Hall, PA 16828
814/364-9500

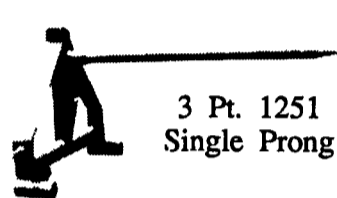
Call or write today for more information

1-800-447-7436

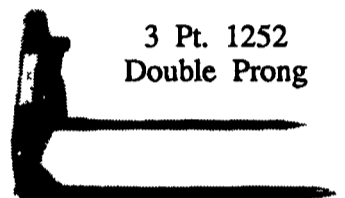
Illinois only, call 1-800-888

PAUL B. Zimmerman INC.

ROUND BALE MOVERS



3 Pt. 1251 Single Prong



3 Pt. 1252 Double Prong

The Same Unit Can Be Used With One Prong For Center Of Bale Or Two Prongs For Under Bale.

SSL-3000 SINGLE PRONG LOADER BUCKET BALE MOVER



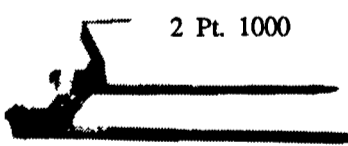
- 1500 Lb. Capacity
- Can Be Mounted On Loader Bucket In Minutes
- Ideal For Bagging Hay
- Makes Stacking Bales Easy



COM 2002 BALE MOVER

- 2,000 Lb. Capacity
- Fits Any 3 Pt. Hitch
- Fits Any Double Or Single Cylinder Loader Boom
- 2 1/4" CRS Spear
- Easily Changes For Single Or Double Spear

BALE MOVER



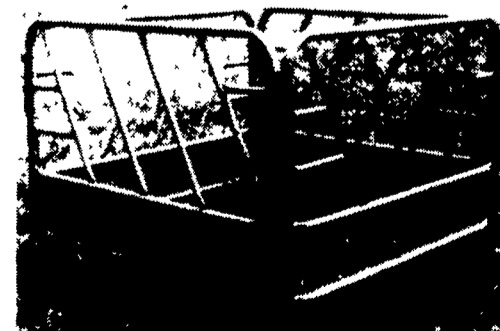
2 Pt. 1000

FRONT END LOADER FORKS

PLF 4000

- Can be mounted on loader bucket in minutes
- No special attachment needed

HEAVY DUTY HAY BALE FEEDER



- Feed Big Round & Reg. Bales or Stacks
- 1'9" O.D. Tubing & 1" Sch. 40 Pipe, All Welded Construction

Closed Thurs., May 24 - Ascension Day