

MAILBOX MARKET FOR SALE

Power units that will fit Farmall cub & C, AC E 60 power unit parts, 2 10-20's for parts. Ben J Kinsinger, RR 1 Box 234A, Meyersdale, Pa. 15552.

Winchester model 94 tire 64 183L454 very good cond, \$250 Montg Co 215-584-4545.

Trailer 9 ton, 3 axle good cond., \$1800, flail mower, Mott 3 pt hitch 48", \$400 scraper blade 3 pt \$150 215-358-0725 eves

Ferguson baler- older model but made 2000 bales last yr., \$350 Columbia ram lamb, born Feb \$175. Cumber Co. 717-776-7858.

Fert. boxes for JD 1440 corn planter w/hyd. drive, like new \$300. Balt. Co. 301-239-8234.

Good used Morgan truck van box' 18' side door & hyd. lift gate Lanc. Co 717-733-7266

Refrig doors, 2- 80"xhigh by 33 1/2" wide, 1 105" high by 45 1/2" wide Chester Co 215-869-2078

32x60 tobacco shed to be removed best offer, JD 1209 haybine \$850, AKC Golden Retriever puppies, \$200 717-733-0515

AC WD45 w/PTO & hyd., good cond., \$1000 Cumber Co 717-532-5382.

NH 358 grinder mixer 21" mill 17' unloading auger 1000 RPM PTO hammers turned once, excel, \$4200 offer. Cumber. Co 717-532-7778

AC-G tractors w/tillers for parts or complete tractors, Orange NY after 8.00 p.m. 914-726-4133.

IHC 666 tractor very good low hrs, new tires engine heater- best diesel engine will trade \$8000 814-944-2352 early-late.

Rubber tire top buggy, hyd brakes, fair cond. 717-656-0378

Case 310 crawler loader very good cond., York Co. 717-246-3571 after 6.

Patz model 400 gutter cleaner 220' model 467 chain heavy duty unit 20' shute good cond., best offer. Berks Co. 215-756-6780.

Saddlebred and standardbred horses for sale, quite a variety, must see. Daniel Stoltzfus, 416 Newport Rd., Ronks, Pa. 17572 call eves.

Gehl 99 blower, H.D. universals, 540 PTO, new liner, high capacity, good cond, owner retiring Leb. Co. 717-272-7834 or 717-273-5352.

Snowmobiles Artic Cat 1990 wildcat only 500 miles \$5,000, 1989 Ext 700 miles \$4000 both like new Tioga Co 814-628-3221.

Int row crop cult. w/shields 4 row good cond., \$950. Lanc. Co. 717-354-6544.

Gehl 72B flail chopper good cond. Lanc. Co. 717-665-4170.

D-7 Caterpillar w/angle blade, good cond., walk-in cooler or freezer 6'x9' & 7 1/2'x9', (2) 24' open cooler w/compressors for store or road market. 717-993-2885.

Mercury Capn V-6 excel. cond., \$1500. 302-994-2996 after 8:30 AM or after 7 PM.

Public Auction

Of Valuable Real Estate, Household Goods, Antiques, And Toys

Sat., June 9, 1990

Sale At 9:30

Real Estate 1:00

Located: Turn Off Rt. 23 In Leola On N. Maple Ave., 1/4 Mile To Sale, Lanc. Co., Pa.



Lot 158'x200' Zone R-1

2 1/2 Story Brick Farm House, Large Kitchen w/Built-In Cabinets, Two Living Rooms, Den, Enclosed Porch and Commode; 6 Bedrooms And Full Bath On Second Floor; Full Attic; Basement; Coal Hot Water Heat, Cistern w/Pressure System, Town Water. **Open For Inspection: Fri. May 18, 6 To 9 P.M.; Sat. June 2, 2 To 4 P.M. Or For Appointment Call 656-6131 Or 656-7199.**

10% Down Day Of Sale Balance On Or Before Oct. 1, 1990.

Leroy N. Eberly

Robert E. & Jeffrey R. Martin, 656-7770 AU000580L Elvin Byler, Atty.



No Out Of State Checks Food Available

PUBLIC AUCTION

SAT., MAY 26, 1990

9:00 a.m.

For James Knight Ironstone Drive

2 mi. w. of Boyertown, off Rt. 73

Lg. Combination Sale: Farm Equip. & Vehicles, Classic Cars, Antiques, Old Toys, Furniture, Glassware & Collectibles.

ANTIQUES: Rd. oak table, rope bed, C.B., trunk, Mission porch set, Treadle sewing machine, oak clothes tree, wood box, chicken crates, oak cabinet, etc...

TOYS: wind-up rooster w/cart, Sandy Andy street car #130 w/carton, Heinz 57 grocery truck, Reg'lar Fellers pencil cases, D.B. cork guns, Mech. Speed Boy delivery truck, metal cars, trains, etc...

CLASSIC CARS: 1959 Chevy Impala, 2 dr., hardtop, auto., 1962 Plymouth Belvedere push button, 54,000 org. mi.

FARM EQUIP: J.D. 3020 diesel tractor, full equip., Farmall M. Hyd. lift tractor, 1974 Chev. 12' F.B., 4-sp. truck, Int. 4 bottom plow, Md. 700, Int. J.D. 2 bottom plow, 2 J.D. 15 disc drills, J.D. & New Idea manure spreaders, N.H. Baler, Md. M. 68 w/PTO, field sprayer, D.B., S.D. rake, Int. corn planters, 4-row, 2 tag along trailers, 3 R.T. wagons, Bush Hog, Int. hay crimper, N.I. #10 1-row corn picker, 2 J.D. disc, 2 corn cribs, 12x12 wood shed, farm tires, fuel tanks, barn full of hay, ground corn, etc.

MISC: Lg. amt. hand and garden tools, elec. hack saw, elec. motors, chain hoists, ladders, rope, stg. tanks, fencing & posts, Lumber & cord wood, scrap metal, barrel wood stove, log chains & much much more.

HOUSEHOLD FURN: Maple D.R. set w/ Hutch, Mpl. L.R. furn., beds, chests, tables, 2 wood & coal stoves, ref., outdoor furn., stereo, color T.V., dishes, linens, cookware, etc.

MARLETTE HOUSE TRAILER: 12x65, good cond.

TERMS: Cash, or approved check **Order Of Sale: Tools & Farm Equip. Antiques & Cars at 12:00 p.m.**

John H. Glenn Auctioneer Lansdale, Pa. 368-0365

Lic. #AU-001220-L

Owner Or Auctioneer Will Not Be Responsible For Accidents LUNCH AVAILABLE

ALL DAY PUBLIC AUCTION

9:00 A.M.

TUESDAY, MAY 22, 1990

Located at Diffenbach's New Holland Auction Center, 100 West Jackson St., New Holland, PA 17557.

COMPRESSORS

20 Compressors From 1 HP To 25 HP New & Used, Most All Used Compressors Are Rebuilt, Including New Curtis 10 HP; Worthington 5 HP, Like New; Quincy Compressors; 3 HP 60 Gallon Tank And Electric Motor; 25 HP With 120 Gallon Tank & Electric Motor.

WELDERS

Large 400 Amp Miller, 3 Phase; Airco 400 Amp Solid State; Hobart 300 Amp Stick 3 Phase Lincoln Arc Welders; Lincoln 150 Portable w/Tecumseh Engine.

LARGE EQUIPMENT

Oster Threading Machines: Toledo Model 999 Pipe Threading Machine With Hyd. Motor With Many Dies And Cutters Ready To Operate; Large Drive-All Lathe; Cincinnati Milling Machine; Four Industrial Type Drill Presses; Punch Presses; Air Tanks; Push Carts And Dollies; Ingersol-Rand 1000 Lb. Air Hoist; New Hyd. Pilot Jacks.

"NEW SPUDNICK"

New Table Saws; New Drill Presses; New Belt Sanders; New Wood & Steel Cutting Band Saws; New 6" Jointer; New 15" Planer.

All Kinds Of New Air Tools; Vises; 30 Rolls w/Paper For Baled Tobacco.

Hand Tools Including Vise Grips; Hammers; Saws; Ridgid Tools; Forks; Shovels; Brooms; Hand Cleaner.

This is an inventory reduction sale for Stoltzfus Hardware, Kirkwood, Pa. Some items due to daily business subject to prior sale.

Sale at 9:00 A.M.
Large Equipment 1:00 P.M.

DIFFENBACH'S AUCT. 225L PH. 355-SALE

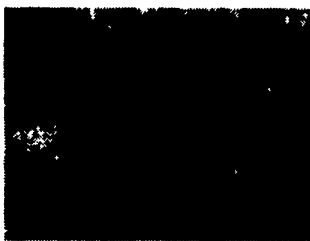
Large Assortment Of Office Desks, Office Chairs & Files Will Be Sold At 12:00 Noon. 25 Desks, 20 Filing Cabinets, 50+ Chairs.

INTERCOURSE, PENNSYLVANIA

LARGE FOUR DAY AUCTION OF CARRIAGES, SLEIGHS & ANTIQUES

MAY 16, 17, 18 AND 19, 1990

Located at Martins Sales Pavilion, two miles East of Intercourse, on the corner of Route 340 & New Holland Road, Lancaster County, PA.



RESTORED BUTCHERS DELIVERY CART



SIX PASSENGER SURREY WITH FRINGE TOP, RESTORED



PONY HITCH WAGON

Over 400 horse drawn carriages, coaches & sleighs including about six pieces of fire fighting equipment; commercial vehicles; pleasure driving carriages & carts; pony road coach "Lilliputt"; hunting & sporting vehicles; 2&4 pass sleighs; 2&4 pass surreys & democrats & others. Also the carriage collection of Mr. & Mrs. Harry Newman of Ringoes, New Jersey.

Carriage & wagon parts; wagon wheels; poles & shafts; many sets of new & used harness; English & western saddles; silver mounted parade outfits; carousel horses; new & used tack; driving equipment & coaching appointments; carriage lamps; primitive & blacksmith tools; running gears; horse drawn farm machinery; miniature dog & horse carts & sleighs; hand pulled wagons; stable accessories; horse & pony blankets & coolers. Thousands of individual lots of all types of horse related items suitable for the rider & driver, collectors, restorers etc.

TERMS: CASH, TRAVELERS CHECKS OR CERTIFIED CHECKS.

Contact our office for additional information & pre-registration for buyers numbers.

Martin Auctioneers, Inc.

"The Greatest Name In Carriage Auctions"
Larry L. & Paul Z. Martin, Jr.

PA-AU-001137 CA-C-879

P.O. BOX 477 • INTERCOURSE, PA. 17534 • PHONE (717) 768-8108 • FAX (717) 768-7714



NEW HOLLAND SALES STABLES, INC.

THANK YOU TO CONSIGNORS AND BUYERS FOR A VERY SUCCESSFUL SPECIAL HEIFER SALE **SATURDAY, MAY 5th**

OVER 600 HEIFERS WERE SOLD TO BUYERS FROM 13 DIFFERENT STATES PRICES WERE VERY GOOD ON ALL AGE HEIFERS THANK YOU AGAIN FOR YOUR PATRONAGE

NEXT HEIFER SALE IS FOR REGISTERED HEIFERS

SATURDAY, JUNE 9, 1990



We Expect **300 Head.**

Please Have Your Heifers Tested For Interstate Shipment.

To Catalogue Animals And Get Sale Numbers, Call Sale Barn Office Or Lois Kolb. Any Grade Heifers Will Be Sold Last.

MANAGERS

Sale Barn 717-354-4341 NORMAN & DAVID KOLB Home 717-397-5538 Lois Kolb 717-397-5538