

Massey-Ferguson Has New Products

DES MOINES, Iowa — Massey Ferguson has introduced a new lineup of agricultural products for the 1990s. Dealers across North America got their first look at new M-F combines, tractors,

and implements at a series of regional meetings.

The new M-F 8570 rotary combine received tremendous attention from dealers at the meetings. "We have been out of the combine

business for a few years and we are pleased to be back in it," said David Pitt, president, Massey-Ferguson Inc. "With the addition of this rotary combine to our product line, Massey-Ferguson will be the only company in North America offering both conventional and rotary combines to meet the needs of farmers."

Steve McDaniel, vice president marketing for Massey-Ferguson, said, "Sales of self-propelled combines were up 60 percent in 1989 from the previous year, and we are projecting another 21 percent increase this year."

Tractor sales have also been trending higher, according to McDaniel, especially in the 100-horsepower range. "Sales of bigger horsepower tractors were up 25 percent in 1989 from the previous year. We project that figure will be up another 17 to 20 percent for 1990," McDaniel said.

Dealer interest was also very high toward the new lineup of

100-plus horsepower Massey-Ferguson tractors, featuring a new technologically-advanced Perkins 1000 Series diesel engine with Quadram power that offers increased torque, improved fuel economy, longer life, and quieter operation.

Pitt noted that Massey-Ferguson has been in business for 142 years, and, "During this time we have been through several severe farm depressions and survived them all. We have also retained the distinction of being the world's largest manufacturer of tractors for 28 consecutive years." According to Pitt, about one of every five tractors sold in the world is a Massey-Ferguson tractor.

Massey-Ferguson's complete product lineup for the 1990s includes:

- 54 tractor models from 16 to 160 horsepower.
- Large tractors (69 to 160 horsepower) with exclusive computer-controlled functions and

electronic three-point hitch for increased productivity.

• New 100 horsepower ag tractors powered by new Perkins 1000 Series diesel engines with Quadram power.

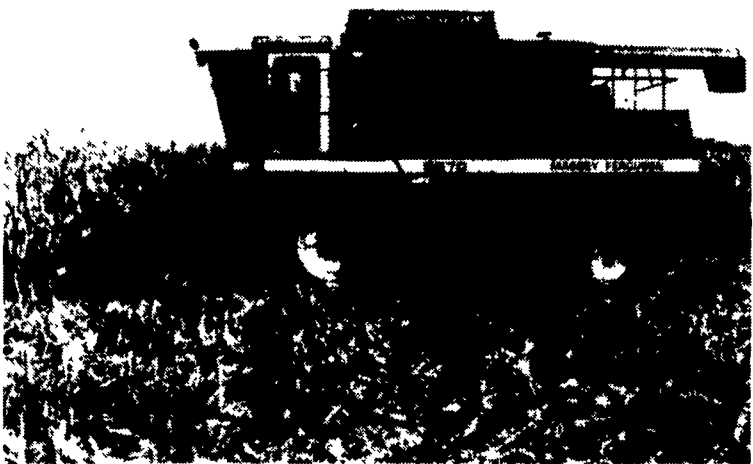
• Three new conventional combines that meet the needs of both large and small acreage farmers.

A new rotary combine available in corn/soybean, small grain, or rice configurations.

• A 375 or 390 horsepower, four-wheel-drive, articulated tractor.

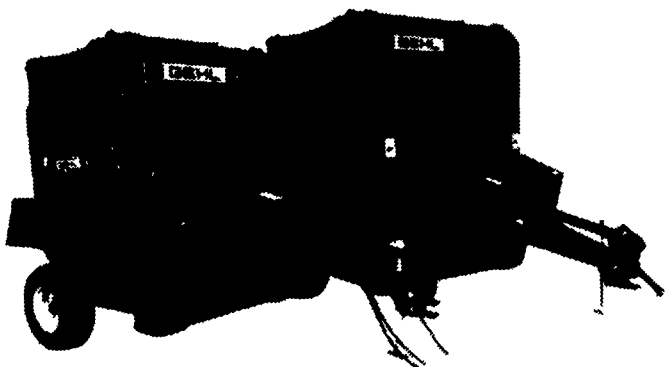
101 implements that match the depth, breadth, and quality of the tractor line, including a hay tool line with round and square balers and self-propelled and pull-type swathers.

Pitt expressed the Company's view for the future. He said, "We have a quality product line and after-sale support system for customers that will ensure a strong position for our dealers and our company throughout this decade and beyond."



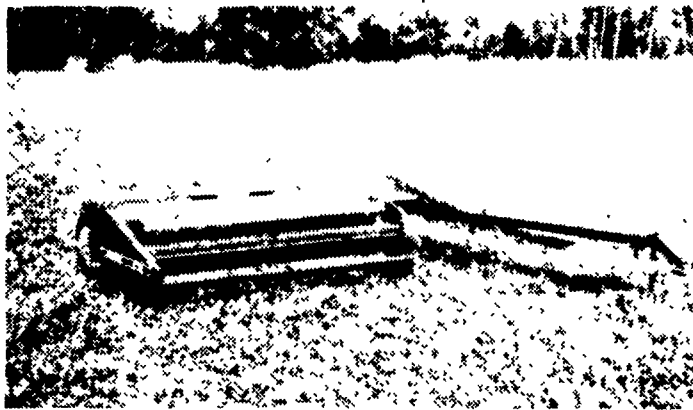
The new M-F 8570 rotary combine from Massey-Ferguson features a 220-hp engine and 227-bushel grain tank capacity.

GEHL



TDC. Round Balers Only From Gehl

TDC® —Total Density Control, is a patented "air-draulic" bale density system exclusively on Gehl round balers. This remarkably simple system allows you to vary bale density and core size to adapt to changing crop conditions — giving you the flexibility you need to make quality round bales. Both the 1870 and 1470 feature texturized belts, constant velocity driveline, and the optional manual or Auto-Electric Twine-wrap. STOP BY FOR A DEMONSTRATION TODAY!



Thoroughly Conditioned

The Gehl 2140/2170 mower conditioners will thoroughly condition your hay. These pull-type mower conditioners are built for fast cutting, fast drying and worry-free performance. The wide, intermeshing rubber rolls with intermittent ribs give you 35% more working edges than continuous-ribbed rolls, for more thorough conditioning. That means shorter drying time with less leaf damage. See your Gehl dealer today on how the 2140, with a 7 ft. cutting width, and the 2170 with a 9 ft. 3 in. cutting width, will fit into your haymaking operation.

0% INTEREST

Please take no interest...

for a full year when you finance your Gehl equipment with our special 0% interest, 12-month payment plan. We also offer other money-saving plans of limited interest — including 24, 36 and 48 month terms, or no payments until October 1, 1990*

Consider, too, the benefits of GEHLease™. This flexible program gives you all the advantages of owning but with a lower downpayment and significant tax savings. For complete information on all Gehl financing options, see your participating Gehl dealer.

GEHL FINANCE
A DIVISION OF
GEHL

*Certain restrictions may apply. Gehl Company reserves the right to interpret, modify, or cancel these programs at any time without prior notice. Waiver dates for certain products may vary. See your participating Gehl dealer for complete details.

Available From Your Local Participating Dealer

SYSTEMA FEED SERVICE
Sussex, N.J.
201-875-5449

STOUFFER BROS. INC.
Chambersburg, PA
717-263-8424

ECKROTH BROS. FARM EQUIPMENT
New Ringgold, PA
717-943-2131

PETERMAN FARM EQUIPMENT, INC.
Carlisle, PA
717-249-5338

LINCOLN SUPPLY & EQUIPMENT CO.
Somerset, PA
814-443-1691
McCabe, MD
301-786-6800

UMBERGER'S OF FONTANA
Lebanon, PA
717-867-5161

PEOPLE'S SALES & SERVICE
Oakland Mills, PA
717-463-2735

LEBANON VALLEY IMPLEMENT CO., INC.
Richland, PA
717-866-7518

MILLER EQUIPMENT CO.
Bechtelsville, PA
215-845-2911

HINES EQUIPMENT
Cresson, PA
814-888-4183
Bellwood
814-742-8171

D.W. OGG EQUIPMENT CO.
Main Location
Frederick, MD
301-473-4250
301-293-2033
Taylorsville, Md.
(Bob's Welding)
301-829-2042

GUTSHALL'S INC.
Loydsville, PA
717-789-4343

A.L. HERR & BRO.
Quarryville, PA
717-786-3521

MILLER-LAKE
Belleville, PA
717-838-2335

BINKLEY & HURST BROS.
Litz, PA
717-626-4705

ELDER SALES & SERVICE, INC.
Steneboro, PA
412-376-3740

ICKES FARM SUPPLY
Osterburg, PA
814-276-3422

Guide Alerts Growers

UNIVERSITY PARK (Centre Co.)—Public concern over pesticide residues in food has resulted in rapid change in chemical product availability and regulation. The latest edition of Penn State's Tree Fruit Production Guide will alert growers to the changes and introduce new pest management practices that can be incorporated into their program.

"Many fruit growers, extension agents, and industry consultants are interested in knowing more about how to minimize their use of pesticides," said Dr. James Travis, associate professor of plant pathology and one of 16 scientists who contributed to the new edition. Integrated pest management (IPM) is one of the guiding concepts behind this year's revision, which provides new information on pesticide use, weed control, and orchard management.

A new section, "Farm Management," describes state and federal laws that apply to Pennsylvania fruit producers, hiring consultants, wage and withholding facts, worker and community safety, and special employment concerns. Addresses and phone numbers of the appropriate government agencies are provided.

Also new to the guide are fact sheets, illustrated with color photographs, which are helpful for identifying and controlling 32 of Pennsylvania's major weeds.

The guide is published by Penn State's College of Agriculture and sells for \$12. To place an order, contact your county extension office or the Publications Distribution Center, 112 Agricultural Administration Building, University Park, PA 16802.