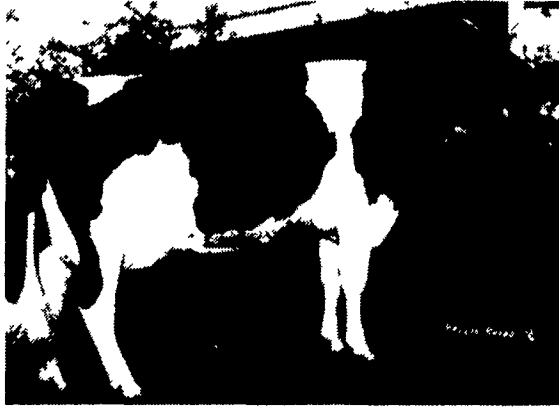


Protein Leaders

...for reliable top performance in components at high milk levels.

**Smith's Own
Prompt
Meg Mandy-VG**
2-9y 338d 2X
17,136M
4.3%F 739F
3.5%P 595P



Dau. of 8H1659 Prompt
+\$245 +1,916M +63P +69F
43 Daus./38 Herds 77% REL; +.07 PTAT
No. 1 AI-sampled sire for protein*
strong udder cleft; correct leg set

S
A
M
P
L
I
N
G



**Spring-Haven
Leadman
Clara-VG (89)**
2-2y 360d 2X
21,617M
4.2%F 908F
3.5%P 750P

Dau. of 8H2024 Leadman
+\$217 +1,640M +61P +57F
56 Daus./53 Herds 77% REL; +2.09 PTAT
No. 2 AI-sampled sire for protein*
high, wide rear udders; steep foot angle

**B-K Whitland
Daylight
Jess-VG**
3-0y 296d 2X
17,896M
4.1%F 731F
3.2%P 579P



Dau. of 8H1651 Daylight
+\$239 +1,910M +60P +68F
93 Daus./72 Herds 86% REL; +.11 PTAT
No. 3 AI-sampled sire for protein*
high, wide rear udders; steep foot angle

P
R
O
G
R
A
M



**Donnandale
Trifecta
Pony-VG**
3-5y 349d 2X
20,168M
3.9%F 795F
3.6%P 725P

Dau. of 8H1536 Trifecta
+\$186 +1,592M +56P +42F
64 Daus./55 Herds 84% REL; +1.74 PTAT
fore udders; stature; body strength

**Schwasnick
Ever-Ready
Bugeye**
2-0y 337d 2X
18,750M
4.0%F 743F
3.3%P 611P



Dau. of 8H1751 Ever-Ready
+\$219 +1,884M +56P +59F
81 Daus./67 Herds 83% REL; +.13 PTAT
under cleft; correct legs; calving ease

G
R
A
D
U
A
T
E
S



**Magos
Bellboy
121-Grade**
3-6y 323d 2X
23,499M
3.5%F 830F
3.3%P 769P

Dau. of 8H1640 Bell Boy
+\$197 +1,930M +49P +50F
79 Daus./63 Herds 85% REL; +1.21 PTAT
shallow udder; correct leg set; calving ease

Plus:

8H1555 Ringer	+\$200 Prot.	+.03%P	58 Daus./54 Herds	83% REL	+ .81 PTAT
8H1740 Valdale	+\$178 Prot.	+.06%P	51 Daus./48 Herds	77% REL	+1.68 PTAT
21H738 Rex	+\$177 Prot.	+.02%P	67 Daus./57 Herds	85% REL	+1.51 PTAT
8H1523 Belltone	+\$171 Prot.	+.02%P	48 Daus./46 Herds	80% REL	+1.18 PTAT
8H1637 Julius	+\$159 Prot.	+.09%P	34 Daus./34 Herds	76% REL	+1.35 PTAT
8H623 Berth	+\$155 Prot.	+.04%P	32 Daus./28 Herds	72% REL	+1.57 PTAT



24-hour toll-free service phones:

Long Distance: 800-444-6456

Lancaster Local: 569-0411

Authorized Distributor for 21st Century Genetics in Atlantic's Service Area

PARTNER IN **G** FEDERATED GENETICS

* with at least 25 herds represented
(all data Jan./90 USDA & HA)

