

# KELLERBROS.

## KUBOTA



### TRACTORS & EQUIPMENT

Serving Central PA Since 1921



### LEBANON

Rt. #7, Box 405, Lebanon, PA 17042  
Rt. 419 1 mile West of Schaefferstown  
**717-949-2000**

### LANCASTER

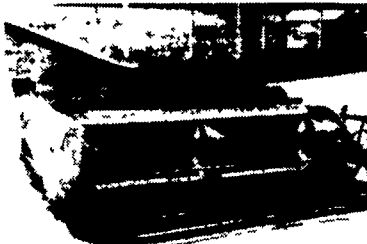
1950 Fruitville Pike, Lancaster, PA 17601  
At Route 38 & Fruitville Pike  
**717-569-2500**

**STORE HOURS**  
MONDAY-FRIDAY 7:30-5:00  
SATURDAY 7:30-12:00

## USED EQUIPMENT - Check For New Additions Weekly



• 20848 **Allis Chalmers WC Tractor**- Mechanical Lift, w/Cultivators, Good Paint, Works Good- A Collector's Item.  
**\$1,525**



• 20972 **New Holland 469 Haybine** 9' Cutting Width, w/Hyd. Cylinder, Operating Condition  
**\$875**



• 21131 **Kubota B-6100 DT Tractor** 14 HP, Std. PTO, 735 Hrs., Nice Condition  
**\$4,490**



• 20979 **John Deere 214 Garden Tractor** 12 HP Variable Drive, 46" Mower, Nice Condition  
**\$2,475**



• 20847 **Allis Chalmers WD Tractor**- 35 HP, Live 540 RPM PTO, Hydraulics, w/3 Bottom PLOW Works Good. A Collectors Item  
**\$1,495**

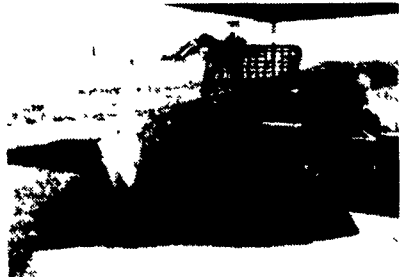


• 20185 **Kubota F-2000 Tractor** 20 HP, 3 Cyl. Diesel, Approx. 500 Hrs., 4WD, PS, w/RC60-F20 Front Mower Great Condition.  
**\$8,675**

- 11' H.D. **Bradco Backhoe**, Used Approx. 8 Hrs., Like New, Skid Steer Loader Mounting
- 20745 **Kubota B-204 Frt. Blade** 4', Manual Angle, Fits B-6100/7100..... **\$675**
- 20759 **Kubota G-2000 Frt. Blade** 48" Frt. Mt. For G-Series Tractors..... **\$195**
- 20151 **Sauder Blade** 7' Front Mount..... **\$475**
- M4311 **Arps AB150 Rear Blade** New Demo. 7' Heavy Duty, Cat. 1 3 Pt. Hitch..... **\$195**
- 14690 **Arps AB150 Rear Blade**, New Demo 7' Heavy Duty, Cat 1, 3 Pt. Hitch..... **\$195**
- 14688 **Arps AB250 Rear Blade** New Demo 6', Extra Heavy Duty, Cat. 1, 3 Pt. Hitch w/Side Pans. **\$360**
- 20997 **Ford 09GN3598 Blade** 48", Frt. Mount, Fits Ford/Gilson Garden Tractors, Good Condition... **\$175**
- 20991 **Ford Dozer Blade** 34" Frt. Mt., Fits Ford/Jacobsen Lawn Tractors, Looks Good **\$125**
- 20186 **Kubota F-3219 Broom** 60", 50/50 Steel & Poly Bristles, w/pwr. Angle Kit (Fits F-Series Kubotas), Good Condition..... **\$1,575**
- F7996 **Ford 951 Brush Cutter** 6', 3 Pt. Hitch, 540 RPM PTO..... **\$575**
- 20954 **John Deere 506 Brushcutter** 5' 3 Pt. Mount..... **\$445**
- 20619 **Brinly CC-500 Cultivator** 1 Row, Sleeve Hitch..... **\$40**
- 20974 **Lavelle Elevator** 23' Electric Motor, Working Order..... **\$175**
- 14199 **Kubota MR-6000 Mower** Will Fit B-6100, B-7100 Tractors, Hydro 5'..... **\$590**
- 21042 **Woods RM-48 Mower** - 48" Finish Cut, 3 Pt. Mount, 850 RPM PTO, w/Frt. Roller, Nice Condition..... **\$690**
- 20195 **Bolens FMC D60-L Flail Mower** 5', 3 Pt. 1000 RPM PTO..... **\$675**
- 19011 **T-38 Mott Tow Type 38" Flail Mower** w/8 HP Engine..... **\$750**
- 20500 **Kubota RC48-62H Mower** 43" Mid-Mower Fits B6200/B7200 HST Tractors, Good Condition..... **\$995**
- 20094 **Kubota B-48 A Mower** (Mid-Mount, w/Frt. PTO Clutch, Fits B-6100/B-7100)..... **\$245**
- 20368 **Woods RM-48 Mower** 48" Finish Cut, 3 Pt. Hitch, 840 RPM PTO..... **\$675**
- 20355 **Kubota MR-6000 Mower** 5' Shaftdriven, Mid Mount for B-6100/B-7100 HST Tractors..... **\$285**
- 20620 **Didier S-500 Sicklebar Mower** 46", Side Mount, Manual Lift, Fits Ford/Jacobsen Tractors, Good Condition..... **\$185**
- 20800 **Homemade Row Maker** 3 Pt., Cat. 0..... **\$50**
- 20980 **Mighty Mac 9P-5 Shredder** 6 HP, Push Type, Like New..... **\$425**
- 18652 **NEW Ber-Vac B-84S Snowblower** 84" 3 Pt. Mount, 540 RPM PTO..... **\$2,490**
- 20990 **Ford Snowblower** 34", Frt. Mt., Fits Ford/Jacobsen Lawn Tractors, Looks Good **\$125**
- 19210 **Kubota 4 Snowblower** Heavy Duty B222-A, Fits B7100 2 Stage..... **\$475**
- 16222 **Kubota B-2510 Snowblower** (38", will fit B-5100, B-4200)..... **\$425**
- 17840 **Kubota G-2500 L&G Snowblower** 38", Will Fit G-Series..... **\$625**
- 19065 **Mighty Mac 50 Gal. Sprayer** P550T..... **\$695**
- 20630 **Parker "Hitch-N-Sweep" Sweeper**, 30", Tow Behind, Excellent Condition... **\$195**
- 20975 **Bush Hog Tiller** 62", 3 Pt. Mount, Very Nice, Very Clean..... **\$995**
- 20350 **Jacobsen 1650 Tractor** 16 HP, Hydrostatic, Hyd. Lift w/50" Mower..... **\$1,095**
- 20796 **Kubota B-6000 E Tractor** 12 HP, Diesel, Std. Cat. 1 3 Pt. Hitch, w/Dynco Frt. Blade, Very Nice..... **\$2,995**
- 19980 **Kubota B-6100 HSE Tractor** 2WD, 14 HP, Hydro w/4 Ft. Belly Mower **\$4,850**
- 20530 **Simplicity 5216 Lawn Tractor** 16 HP, Bnggs I/C Engine, Hydro w/44" Mower, Very Nice..... **\$1,590** ~~\$1,675~~
- 20844 **Toro 1142 Lawn Tractor** 11 HP, 42" Cut, Excellent Condition... **\$790**
- 20808 **John Deere 318 Garden Tractor** 18 HP, Hydro, PS, 46" Mower, Grass Catcher, Frt. Weights, Nice Condition..... **\$3,490**
- 20708 **Ford 100 L&G Tractor** 10 HP, 42" Cut, Very Nice Condition..... **\$890**
- 20996 **Ford LGT-17 H Tractor** 17 HP, Hydro, Hyd. Lift, 42" Mower, Rear Wheel Wts., Very Nice..... **\$2,575**
- 20989 **Ford LT-80 Lawn Tractor** 8 HP, 34" Mower, Works Good..... **\$590**
- 20988 **Gilson Lawn Tractor** 11 HP, 38" Mower, Gear Drive..... **\$590**
- 20981 **Case 195 Garden Tractor** 12 HP, Hydraulic Drive, w/44" Mower, "Mechanics Special" **\$495**
- 13390 **Ford LGT-12 Tractor** w/42" Mower, 12 HP Gear, New Leftover..... **\$2,495**
- 20271 **Kubota G-5200 H Tractor**, 14 HP, 3 Cyl. Diesel, Hydro w/48" Mower..... **\$3,275** ~~\$3,425~~
- 20413 **Bolens GT-17 Tractor** 7 HP HST, Hyd. Lift, 48" Mower & Front Blade..... **\$1,595**
- 20929 **Kubota G-5200 H Tractor** 14 HP, 3 Cyl. Diesel, Hydro, RC48G Mower, Works Good... **\$2,875**
- 20973 **Special Construction Trailer** 12,000 lb. GVW, Triaxle w/Ramps..... **\$675**
- 18204 **Kubota G-3008 Vac System L&G** Fits G Series Tractors With 48" Mower..... **\$450**
- 20352 **Trac Vac 460 Vac Unit** 5 HP, Direct Mount, 8 Bus. Cap., Hitch & Chute For Kubota G Series Tractors, Good Cond..... **\$575**
- 21041 **Peco PEH-110 Vac Unit** 3 HP, Direct Mount w/Hitch & Chute For Kubota G Series..... **\$395**
- 20356 **Trac Vac 856 Vac Unit** 3 Pt. Hitch, PTO Driven, 45 Cu. Ft. Capacity..... **\$695**
- 20709 **Trac Vac 460 RH** ~~SOLD~~ Unit 5 HP, 8 Bushel Capacity, Like New..... **\$550**
- 20211 **Kubota G-3008 Vac Unit** Fits G Series Tractors w/48" Mower..... **\$450**

### COMING IN:

- Kubota G3008 Grass Catcher
- Oliver Crawler
- Kubota G-2000 Frt. Blade
- Kubota B-310 Cultivator
- Kubota L-590 Mower
- Marzel RM-35 Mower
- Halm Rototiller
- Kubota G-5200 H Tractor
- Kubota B-7100 HSD Tractor
- Kubota L-275 DTS Tractor
- Simplicity 7117 LGT



• 21045 **Case 1530 Skid Loader** 4 Cyl. Watercooled Gas Engine, Vari-Drive, 60" Material Bucket, Nice **\$2,880**



• 20146 **Ford 4000 Tractor** 4 Cyl., Gas, SOS, 47 HP, PS, Single Spool Remotes w/Hydraulic Loader, Runs Good **\$4,480**

## Martin Tractor

866 Greenspring Rd., Newville, PA 17241

### Used Tractors

AC: D17; Case: 1030; Deutz: 9006; IH: 656 w/Loader; JD: 70 gas & diesel; Oliver: 1655; MM: G1000 Vista, G900.

### Currently Dismantling Tractors For Parts

AC: B, WC, WD, D14, D15, D17, D19, 5040, XT190, 200, 7040; DB: 990; CASE: VAC, SC, DC, 430, 600, 700, 730, 830, 870, 1030, 1070, 1270, 1370, 1410; DEUTZ: 5506; 9006; FORD: 9N, Jubilee, 851, 971, 3000, 4000, 5000, 6000, 8000, 9600; IH: H, M, MTA, Super C, WD9, 200, 240, B275, 300, 350, 400, 404, 450, 460, 504, 544, 560, 584, 656, 666, 706, 756, 806, 826, 966, 1026, 1206, 1256, 1468, 1586; JD: A, B, 40, 50, 60, 70, 420, 520, 530, 620, 630, 720, 730, 1020, 1530, 2010, 2020, 2040, 2510, 3010, 3020, 4010, 4020, 4030, 4230, 4320, 4430, 4630, 5020, 6030, 8430; L&G: 460; MH: 44; MM: 4 Star, 5 Star, Jetstar 3, 445, 602, 670, G900; G1000; G1000 Vista, G1050; Oliver: 60, 66, 70, 77, 88, 770, 1450, 1550, 1600, 1650, 1750, 1755, 1800, 1850, 1855, 1950, 1955.

**717-776-7542**

MON-FRI 8-5  
SAT 8-12  
No Sunday Calls Will Ship UPS  
No Out Of State Personal Checks

## Nothing runs like a Deere

### TRACTORS

JD 4020 Gas	\$ 3,500
IHC 806	\$ 4,500
JD 4230 4 Post Enclosure, PS, Nice	\$14,800
JD <del>SOLD</del> WD w/72" Mid Mower, 236 Hrs	\$ 9,500
JD 855 w/300 Hrs., MFWD & Valve	\$ 9,500
JD 650 MFWD w/Loader & Backhoe	\$ 9,500
White 2-88 4WD, Nice	Coming In
JD 2940 w/cab, 1700 hrs., excell cond	Coming In
JD 4520, PS, w/RG cab, duals, excellent	Coming In
JD 4050 w/cab, PS, excellent	Coming In

### COMBINES

JD 6620 Sidehill 1979 w/2100, Nice	\$31,500
JD 6620 Level Land 1979 w/2000 Hrs	\$19,500
IHC 205 w/10' Grain Platform & Cab, Nice	\$ 4,750
NI 709 Unisystem w/Sheller Unit & 4RN Cornhead	\$18,900

### CORNHEADS & GRAIN PLATFORMS

JD 15' Cutting Platform, Excellent	\$ 2,350
NI 844 Snapper WH	\$ 2,000
JD 643 Cornhead, Excellent	\$ 7,850
JD 444 Cornhead, Excellent	\$ 3,850
AC 3RN Cornhead w/Hesston Snapper Head Adapter	\$ 2,300

### MISCELLANEOUS

JD 1550 Powertill Seeder w/Grass Seeder, Nice	\$ 3,250
Whitmore Blower Grinder	\$ 800
NI 325 Picker Sheller	\$ 2,500

### HAY EQUIPMENT

JD 660 Hay Rake, Like New	Coming In
JD 337 Baler w/30 Ejector, Nice	\$ 7,250
JD 336 Baler w/30 Ejector, Nice	\$ 5,250
NH 320 Baler w/Thrower, Nice	\$ 6,450
NH 315 Baler w/Thrower	\$ 4,000
NH 310 Baler w/Thrower	\$ 3,500
NH 273 Baler w/Thrower	\$ 2,500
NI 555 Baler w/Thrower	\$ 4,000
NH 479 Haybine	\$ 2,500
Owatonna 9' Haybine	\$ 750
JD 1219 Mower Conditioner, Nice	\$ 5,500
Hesston 5510 Round Baler, Nice	\$ 6,450
3 - Used Elevators	\$600-\$ 1,200

### FORAGE EQUIPMENT

Complete Cutter Head For JD Self-Propelled Forage Harvester. **\$3,000**

JD 3960 Harvester w/Controls & 7' Grasshead	\$ 9,000
JD 3940 Harvester w/Controls & 5 1/2' Grasshead & 2RN	\$ 6,650
IHC 555 Forage Harvester w/2RW & Grasshead	\$ 2,500
Papec Forage Harvester w/Grasshead & 2RW	\$ 800
JD 716A Forage Wagon w/1275 Tandem Chassis, Nice	\$ 6,250

### MANURE SPREADERS

JD 34 Spreader	\$ 1,000
5 - NI Manure Spreaders	\$700-\$ 1,100

## WINELAND EQUIP. INC.

RD 2 Rte. 164 East  
Martinsburg, PA 16662  
Phone 814-793-2109