

Grantsville Livestock

Grantsville, Maryland
Sat., April 28, 1990

HOGS: TOP BARROWS & GILTS 57.00-59.80; **HEAVY BUTCHER** 54.00-58.50; **LIGHT BUTCHER** 40.00-57.00; **BUTCHER SOWS** 45.00-52.50; **FEEDER SHOATS** 25.00-55.00.

VEAL: GOOD 90.00-1.20; **STANDARD** 75.00-85.00; **UTILITY** 50.00-65.00; **BULL CALVES** 1.20-1.95.

SHEEP & LAMBS: GOOD 65.50-69.00; **UTILITY** 55.00-60.00; **SLAUGHTER EWES** 15.00-20.00.

SLAUGHTER CATTLE: NONE AVAILABLE; STANDARD 65.00-70.50; **UTILITY** 58.00-62.00. **HEIFERS: GOOD** NONE AVAILABLE; **STANDARD** 65.00-68.50; **UTILITY** 52.00-60.00.

COWS: COMMERCIAL 50.50-57.50; **UTILITY** 42.00-48.00; **CANNER AND CUTTER** 40.00 AND DOWN.

BULLS: COMMERCIAL & GOOD 60.00-66.50; **CUTTER & UTILITY** 52.00-58.00.

STOCK-FEEDER CATTLE: GOOD 72.00-87.50; **MEDIUM** 60.00-67.50.

STEER CALVES: GOOD 85.00-97.50; **MEDIUM** 65.00-75.00.

HEIFER CALVES: GOOD 75.00-92.00; **MEDIUM** 60.00-70.00.

You Can Buy



Diffenbach's New Holland Auction Center, Ltd.
100 WEST JACKSON ST. • BOX 485 • NEW HOLLAND, PA. 17557
PHONE (717) 355-7253 (717) 393-4464 (717) 354-3297

You Can Sell

HAY SALE EVERY MONDAY- 10:00 A.M.

1990 SPECIAL SALES

MAY 1990						
S	M	T	W	T	F	S
-	-	1	2	3	4	5
6	7	8	9	10	11	12
13	14	15	16	17	18	19
20	21	22	23	24	25	26
27	28	29	30	31	-	-

JUNE 1990						
S	M	T	W	T	F	S
-	-	-	-	1	2	3
4	5	6	7	8	9	10
11	12	13	14	15	16	17
18	19	20	21	22	23	24
25	26	27	28	29	30	31

JULY 1990						
S	M	T	W	T	F	S
1	2	3	4	5	6	7
8	9	10	11	12	13	14
15	16	17	18	19	20	21
22	23	24	25	26	27	28
29	30	31	-	-	-	-

AUGUST 1990						
S	M	T	W	T	F	S
-	-	1	2	3	4	5
6	7	8	9	10	11	12
13	14	15	16	17	18	19
20	21	22	23	24	25	26
27	28	29	30	31	-	-

SEPTEMBER 1990						
S	M	T	W	T	F	S
-	-	-	-	-	1	2
3	4	5	6	7	8	9
10	11	12	13	14	15	16
17	18	19	20	21	22	23
24	25	26	27	28	29	30

OCTOBER 1990						
S	M	T	W	T	F	S
-	1	2	3	4	5	6
7	8	9	10	11	12	13
14	15	16	17	18	19	20
21	22	23	24	25	26	27
28	29	30	31	-	-	-

NOVEMBER 1990						
S	M	T	W	T	F	S
-	-	-	-	1	2	3
4	5	6	7	8	9	10
11	12	13	14	15	16	17
18	19	20	21	22	23	24
25	26	27	28	29	30	-

DECEMBER 1990						
S	M	T	W	T	F	S
-	-	-	-	-	1	2
3	4	5	6	7	8	9
10	11	12	13	14	15	16
17	18	19	20	21	22	23
24	25	26	27	28	29	30
31	-	-	-	-	-	-

- SAT. MAY 12 9:00 A.M. Joe E. Stoltzfus, 731 Nottingham Rd., Peach Bottom, Pa. Shop Equipment and Tools (On the Farm)
- FRI. MAY 18..... 9:00 A.M. Farm Equipment & Supplies
- SAT. JUNE 2..... 9:00 A.M. Consignment Auction Antique Furniture.
- FRI. JUNE 15..... 9:00 A.M. Farm Equipment & Supplies
- SAT. JUNE 30..... 10:00 A.M. Bertha Shirk, Paradise. Real Estate, HH Goods & Antiques. (On the premises)
- FRI. JULY 13..... 9:00 A.M. Farm Equipment & Supplies
- TUES. & WED., JULY 24 & 25 9:00 A.M. Quilts, Crafts, & Buggies
- FRI. AUG. 17..... 9:00 A.M. Farm Equipment & Supplies
- TUES. AUG. 28..... 6:00 P.M. Guns of all descriptions
- TUES. SEPT. 4..... 6:00 P.M. Lawn Mowers & Garden Equipment
- FRI. SEPT. 14..... 9:00 A.M. Farm Equipment & Supplies
- TUES. SEPT. 25..... 6:00 P.M. Guns of all descriptions
- SAT. OCT. 6..... 9:00 A.M. Camp Deer Park Benefit Auction
- FRI. OCT. 12..... 9:00 A.M. Farm Equipment & Supplies
- TUES. & WED., OCT. 23 & 24 9:00 A.M. Quilts, Crafts, & Buggies
- FRI. NOV. 9..... 9:00 A.M. Farm Equipment & Supplies
- SAT. NOV. 24..... 9:00 A.M. Toys, Crafts, Gifts, & Tools

Contact Us For Rates
And Dates For Your Sale.

ADD YOUR SALE TO THIS LISTING NOW!
Diffenbachs Aucts. 225L
Bonded Licensed Livestock Dealer and Order Buyer

Equipped And Ready
To Serve You

SPECIAL HEIFER SALE
SATURDAY, MAY 5
10:00 A.M.

NEW HOLLAND SALES STABLES INC.
THE ACTION AUCTION

SPECIAL STOCKER AND FEEDER SALE
FRIDAY, APRIL 20
7:00 P.M.

LIVESTOCK IS OUR ONLY BUSINESS

MONDAY

SLAUGHTER HOGS

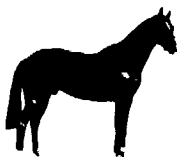


EARLY BIRD HOG SALE
7:30 A.M.

Sell Your Hogs At New Holland Sales Stables, Inc.
See them weighed, sold and pickup your check.

10:00 AM

HORSES MULES



1:30 PM

BEEF SALE

SHEEP



CALVES

WEDNESDAY

DAIRY 11:00 AM COW SALE 12:00 NOON COWS



We have the usual run of 50 to 100 Heifers, all ages.
Loads of fresh cows and springers from our regular shippers.
Also some local fresh cows and springers.

1:30 P.M.

FEEDER PIG SALE

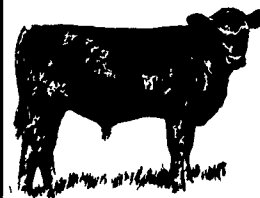


Pigs are accepted after 6:30 A.M. State graded from 8 to 12
Dairy Barn and Feeder Pig Barn are cleaned and disinfected weekly for your protection.

THURSDAY

Beef Auction
10:00 A.M.

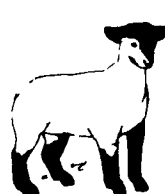
BULLS STEERS BEEF COWS



STOCKERS & FEEDERS

1:30 P.M.

SHEEP GOATS CALVES



NEW HOLLAND SALES STABLES, INC.

12 Miles East of Lancaster Off Route 23, New Holland, Penna.

MANAGERS

Norman & David Kolb - 717-397-5538

Field Representatives

Luke Eberly - 215-267-6608 738-1865

Homer Eberly - 215-267-3047

Sale Barn Officer Manager
Roger Floyd - 717-354-4341

Order Buyer

Paul Good - 215-445-6662

Feeder Pig Representative

Mel Hoover - 717-354-8397