



Hog Markets

Lancaster Hogs

Lancaster Stockyards
Sat., April 21, 1990
Report supplied by auction

900 HEAD.
US 1 215-245 LBS. 55.50-56.50.
US 1-2 215-245 LBS. 54.50-55.50.
US 1-3 215-245 LBS. 54.00-54.50.
US 2-4 215-255 LBS. 53.00-54.00.
HEAVY HOGS: 50.00-52.00
GOOD SOWS: 50.00-53.00.
MEDIUM SOWS: 47.00-50.00.
THIN SOWS: 40.00-45.00.
HEAVY BOARS: 41.00-43.50.
LIGHT BOARS: 41.50-48.00.

New Holland Hogs

April 23, 1990

TODAY 1060
LAST MONDAY 924
LAST YEAR 971
TREND: Compared to last Monday barrows and gilts 50 lower.
BARROWS AND GILTS: US 1-2 210-250 lb 54.25-55.50, Couple lots 55.75.
US 1 215-235 lb 56.00-57.75.
US 1-3 210-265 lb 53.00-54.00.

Peoria Hogs

Peoria, Illinois

Thursday, April 19, 1990

FEDERAL-STATE OPENING, MID-SESSION AND CLOSE HOGS: 1400 TRADING MODERATE. BARROWS AND GILTS FULLY .50 HIGHER COMPARED WITH WEDNESDAY. SUPPLY MAINLY US 1-3 230-260 LBS.

US 1-3 220-250 LBS. 54.50-55.00, 175 HEAD 55.25-55.50 210-220 LBS. 50.50-54.50 2-3 230-260 LBS. 54.00-54.50 260-280 LBS. 52.50-54.00.
SOWS: UNDER 500 LBS. STEADY TO .50 HIGHER OVER 500 LBS. MOSTLY .50 LOWER INSTANCES 1.00 LOWER. 13%.

US 1-3 325-400 LBS. 49.50-50.00 400-500 LBS. 51.00 500-650 LBS. 52.00-52.50.
BOARS: OVER 350 LBS. 48.50 UNDER 350 LBS. 47.50-48.00.
HOG 214 HB 50.50-54.50 HC 54.50-55.50 HD 54.50-55.50 HE 54.50-55.50 HH 50.50-54.50 HI 54.50-55.00 HJ 54.50-55.00 HK 54.50-55.00 HQ 54.00-54.50 HR 53.00-54.00 HV 49.50-50.00 WW 51.00-51.00 XX 52.00-52.50 YY 52.00-52.50 ZZ 48.50-48.50.

State Graded Feeder Pig Sale

at Westminster
Livestock Auction
April 20, 1990

943 PIGS. 2 WEEKS AGO 1492. PRICES STEADY ON PIGS 20-40 LBS. 5.00-10.00 HIGHER ON PIGS 40-70 LBS. PIGS WEIGHED ON ARRIVAL AND SOLD BY THE POUND.
GRADES 1 AND 2: 35 HD. 19-30 LBS. 137.00-154.00; 79 HD. 30-39 LBS. 132.00-140.00; 249 HD. 40-49 LBS. 131.00-141.00; 230 HD. 50-59 LBS. 121.00-135.00; 88 HD. 59-66 LBS. 108.00-124.00; 139 HD. 69-72 LBS. 99.00-111.00; 5 HD. 81 LBS. 100.00.
GRADE 2: 7 HD. 25 LBS. 140.00; 34 HD. 32-39 LBS. 85.00-100.00; 37 HD. 42-49 LBS. 99.00-129.00; 12 HD. 51-59 LBS. 80.00-96.00.

Indiana Hogs

Indianapolis, Ind.

Wednesday, April 18, 1990

DIRECT HOGS 51.
BARROWS AND GILTS UNEVENLY STEADY. DEMAND GOOD.
US 1-2 220-260 LBS. 52.25-53.25, SOME TO 53.50.
210-220 LBS. 50.75-52.50.
US 1-3 210-260 LBS. 50.75-52.75.
SOWS: STEADY.
US 1-3 300-500 LBS. 43.00-46.00.
500-650 LBS. 46.00-50.00, SOME TO 51.

INDIANA DIRECT RECEIPTS: TUESDAY'S ACTUALS 19,000 TODAY'S ESTIMATE 15,000 WEDNESDAY WEEK AGO 16,000 WEDNESDAY YEAR AGO 18,900 WEEK TO DATE 51,800 SM PD WEEK AGO 49,600 SM PD YEAR AGO 54,400.

CARCASS BASIS HOG PRICES: HOT WEIGHTS: PLANT DELIVERED. 160-185 LBS. BARROWS & GILTS: UNEVENLY .34 LOWER TO .67 HIGHER.

US 1 (BACKFAT THICKNESS .5-.79 IN.) 74.43 TO 77.69 US 1 (BACKFAT THICKNESS .8-.99 IN.) 73.13 TO 74.43 US 2 (BACKFAT THICKNESS 1.00-1.24 IN.) 71.55 TO 73.13 US 3 (BACKFAT THICKNESS 1.25-1.49 IN.) 70.55 TO 72.19 US 4 (BACKFAT THICKNESS 1.50-1.79 IN.) 67.62 TO 70.55.

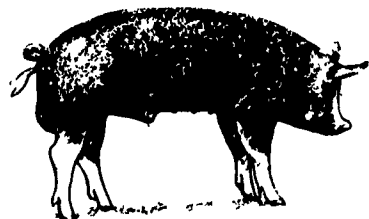
ACTUAL PAYING PRICE MAY NOT ALWAYS BE WITHIN PRICE RANGES AS ADJUSTMENTS ARE MADE FOR SUPERIOR OR INFERIOR MUSCLING AND BACKFAT THICKNESS WITHIN THE GRADES.

New Holland Feeder Pig Auction

Lancaster, Pa.

Wednesday, April 25, 1990

Feeder Pigs:
Today 627
Last Wednesday 1038
Last Year 1050
TREND: Compared to last Wednesday US 1-2 feeder pigs 5.00-10.00 higher, US 2 10.00-15.00 higher. All pigs weighed on arrival and sold by the hundred weight.
GRADE HEAD WEIGHT PRICE US 1-2 43 20-28 168.00-196.00. 27 30-39 144.00-172.00. 77 41-49 124.00-132.00. 69 52-56 120.00-130.00. 47 61-65 110.00-114.00.
US 2 38 22-30 148.00-188.00. 79 31-39 132.00-146.00. 108 41-53 118.00-124.00. 7 70-77 89.00-92.00.
US 2-3 12 20-27 150.00-154.00. 18 31-36 136.00-148.00.



Hay & Grain Markets

Pa. Grain

April 23, 1990

Report supplied by PDA

COMPARED WITH LAST TUESDAY'S MARKET FOR SOUTHEASTERN, CENTRAL AND SOUTH CENTRAL PA: CORN STEADY TO .04 HIGHER; WHEAT STEADY TO .05 LOWER; BARLEY STEADY TO WEAK, SPOTS .05 LOWER; OATS STEADY TO .02 LOWER; SOYBEANS STEADY TO .08 HIGHER; EAR CORN STEADY TO 1.00 HIGHER.

SOUTHEASTERN PENNSYLVANIA CORN NO. 2-Y RANGE 2.85-3.17, FEW REPORTED 2.75, AVERAGE 2.98, FEW REPORTED CONTRACT FOR HARVEST 2.50-2.82; @WHEAT NO. 2 RANGE 3.70-3.95, AVERAGE 3.85, FEW REPORTED CONTRACT FOR HARVEST 3.21-3.31; BARLEY NO. 3 RANGE 2.00-2.44, AVERAGE 2.12, FEW REPORTED CONTRACT FOR HARVEST 1.90-2.10; OATS NO. 2 RANGE 1.50-1.83, AVERAGE 1.64, FEW REPORTED CONTRACT FOR HARVEST 1.10; SOYBEANS NO. 1 RANGE 5.50-6.05, AVERAGE 5.81, FEW REPORTED CONTRACT FOR HARVEST 6.05-6.10; FEW REPORTED GR. SORGHUM #2 RANGE 2.75, AVERAGE 2.75; FEW REPORTED PER HUNDREDWEIGHT RECLEANED 15% RANGE 8.15, AVERAGE 8.15; AVERAGE NEW EAR CORN RANGE 78.00-92.00, AVERAGE 83.62.

SOUTH CENTRAL PENNSYLVANIA

CORN NO. 2-Y RANGE 2.70-3.10, AVERAGE 2.89; @WHEAT NO. 2 RANGE 3.50-3.70, AVERAGE 3.56; BARLEY NO. 3 RANGE 2.00-2.35, FEW REPORTED 1.80, AVERAGE 2.12; OATS NO. 2 RANGE 1.40-1.80, AVERAGE 1.61; FEW REPORTED SOYBEANS NO. 1 RANGE 5.75, AVERAGE 5.75; AVERAGE NEW EAR CORN RANGE 70.00-86.00, AVERAGE 76.57.

SOUTHEASTERN, CENTRAL & SOUTH CENTRAL SUMMARY

CORN NO. 2-Y RANGE 2.70-3.10, AVERAGE 2.94; @ WHEAT NO. 2 RANGE 3.50-4.00, AVERAGE 3.73; BARLEY NO. 3 RANGE 2.00-2.44, AVERAGE 2.13; OATS NO. 2 RANGE 1.50-1.80, AVERAGE 1.63; SOYBEANS NO. 1 RANGE 5.40-6.05, AVERAGE 5.75; AVERAGE NEW EAR CORN RANGE 70.00-92.00, AVERAGE 80.89.
CENTRAL PENNSYLVANIA CORN NO. 2-Y RANGE 2.70-3.05, FEW REPORTED 3.10, AVERAGE 2.91; @WHEAT NO. 2 RANGE 3.45-4.00, AVERAGE 3.69; BARLEY NO. 3 RANGE 2.00-2.30, AVERAGE 2.16; OATS NO. 2 RANGE 1.50-1.75, AVERAGE 1.64; SOYBEANS NO. 1 RANGE 5.40-5.95, AVERAGE 5.66; FEW REPORTED GR. SORGHUM #2 RANGE 2.50, AVERAGE 2.50; FEW REPORTED PER HUNDREDWEIGHT RECLEANED 15% BUCKWHEAT RANGE 8.15, AVERAGE 8.15; AVERAGE NEW EAR CORN RANGE 75.00-86.00, AVERAGE 80.14.

WESTERN PENNSYLVANIA CORN NO. 2-Y RANGE 2.79-2.97, AVERAGE 2.88; @WHEAT NO. 2 RANGE 3.50-3.95, AVERAGE 3.70; BARLEY NO. 3 RANGE 2.05-2.15, AVERAGE 2.10; OATS NO. 2 RANGE 1.40-2.00, AVERAGE 1.73; FEW REPORTED SOYBEANS NO. 1 RANGE 5.60, AVERAGE 5.60; AVERAGE NEW EAR CORN RANGE FEW REPORTED 77.00-100.00, AVERAGE FEW REPORTED 85.50.

MONTH AGO

CORN NO. 2-Y 2.81; @WHEAT NO. 2 3.80; BARLEY NO. 3 2.13; OATS NO. 2 1.66; SOYBEANS NO. 1 5.73; AVERAGE EAR CORN 79.93.

YEAR AGO

CORN NO. 2-Y 3.08; @WHEAT NO. 2 3.79; BARLEY NO. 3 2.45; OATS NO. 2 2.19; SOYBEANS NO. 1 7.40; AVERAGE NEW EAR CORN 95.52.

Regional Hay

April 20, 1990

Eastern, Pa.

HAY & STRAW MARKET FOR EASTERN PA - (ALL HAY NO. 2 AND BETTER, PRICES PAID BY DEALERS AT THE FARM & PER TON). HAY AND STRAW MOSTLY STEADY.

ALFALFA 80.00-120.00; MIXED HAY 60.00-110.00; TIMOTHY HAY 60.00-110.00; STRAW 50.00-80.00; MULCH 30.00-45.00, FEW 20.00.

SUMMARY OF LANCASTER CO. HAY AUCTIONS FOR WEEK ENDING 4/20/90. PRICES PER TON: LOADS: 267 HAY, 84 STRAW, AND 18 EAR CORN.

ALFALFA 117.00-210.00; MIXED HAY 90.00-175.00; TIMOTHY HAY 90.00-140.00; STRAW 95.00-120.00; EAR CORN 85.00-101.00.

SUMMARY OF CENTRAL PA. HAY AUCTIONS FOR WEEK ENDING 4/20/90. PRICES PER TON: LOADS: 199 HAY, 21 STRAW & 8 EAR CORN.

ALFALFA 120.00-210.00; MIXED HAY 87.50-170.00; TIMOTHY HAY FEW REPORTED 95.00-110.00; STRAW 61.00-82.50; EAR CORN 75.00-82.50.

National Grain Market

St. Joseph, Mo.

Wednesday, April 18, 1990

USDA DAILY NATIONAL GRAIN MARKET SUMMARY CASH GRAIN PRICES MIXED ON WEDNESDAY. PRICES VARIED BETWEEN AREAS OF THE COUNTRY WITH NO CLEAR TREND EVIDENT. LACK OF NEW EXPORT NEWS OR OTHER FUNDAMENTAL CHANGE AND LIGHT BUYING INTEREST ON FUTURES BOARDS GAVE NO CLEAR INDICATION OF CHANGE.

EXPORT NEWS: TAIWAN BOUGHT 54,000 TONNES OF U.S. NO. 2 YELLOW CORN FOR MAY SHIPMENT FROM THE GULF OR MAY-JUNE SHIPMENT FROM THE WEST COAST. DATE CHANGE YEAR AGO 04/18/90 04/17/90 04/19/89 WHEAT: KANSAS

CITY 4.02-4.07 UP 3 4.43-4.46 MINNEAPOLIS 4.10 1/4-4.12 1/4 DN 2 1/2 - 1/2 4.52 1/2-4.54 1/2 PORTLAND 3.68-3.72 DN 2 - UP 1 4.63-4 67 ST. LOUIS 3.83-3.91 DN 2 - 6 4.21-4.24.

CORN, U.S. NO. 2 YELLOW: KANSAS CITY 2.64-2.68 NC 2.65-2.69 MINNEAPOLIS 2.63 3/4 UP 3/4 2.69 SO. IOWA 2.72-2.75 UP 1 2.74-2.77 OMAHA 2.57 UP 1 - NC 2.56-2.57.

SOYBEANS, NO. 1 YELLOW: KANSAS CITY 5.88-5.92 NC - DN 1 7.50-7.52 MINNEAPOLIS 5.78 1/4 DN 1/4 7.46 SO. IOWA 5.84-5.90 DN 2 - NC 7.51-7.56 C. ILL. PROCESSORS 5.93 1/2-5.99 1/2 DN 1 - 2 7.51-7.54.

KANSAS CITY, US NO. 1 HARD RED WINTER WHEAT, ORDINARY PROTEIN. MINNEAPOLIS, US NO. 1 DARK NORTHERN SPRING WHEAT, 14% PROTEIN. PORTLAND, NO. 1 SOFT WHITE WHEAT, ST. LOUIS, NO. 2 SOFT RED WINTER WHEAT.

FUTURES CLOSE: KANSAS CITY (MAY) WHEAT 3.67 1/2 DN 1 1/2 4.26 1/2 MINNEAPOLIS (MAY) WHEAT 3.72 1/4 DN 1/2 4.24 1/2 CHICAGO (MAY) WHEAT 3.65 1/4 UP 1/2 4.11 3/4 (MAY) CORN 2.73 3/4 DN 1/4 2.73 (MAY) SOYBEANS 5.94 1/4 DN 2 1/4 7.45.

EXPORT: BARGE OR RAIL, PORT OF NEW ORLEANS OR NORTH TEXAS GULF. NO. 1 HARD RED WINTER WHEAT ORDINARY PROTEIN 4.43-4.46 DN 1 - 3 4.79 NO. 2 SOFT RED WINTER WHEAT 4.00 NC 4.44-4.45 NO. 2 YELLOW CORN 3.02-3.03 UP 1 - NC 2.97-2.99 NO.2 YELLOW SORGHUM RAIL 4.98 DN 2 BARGE 4.98 UP 2 4.98-4.98 NO.2 YELLOW SOYBEANS 6.17-6.20 DN 3 - 1 7.74-7.77.

Green Dragon Hay

Ephrata, Pa.

Friday, April 20, 1990

Report Supplied by Auction

TOTAL LOADS: 112.
MIXED HAY: 76.00-240.00.
ALFALFA: 76.00-285.00.
TIMOTHY: 92.00-140.00.
GRASS HAY: 80.00-104.00.
STUBBLE HAY: 72.00.
STRAW: 67.00-147.00.
EAR CORN: 85.00-97.00.
OATS: 2.40-2.70 BU.

Diffenbach Auction Center

New Holland, PA

Monday, April 23, 1990

Report Supplied by Auction

TOTAL LOADS: 172.
ALFALFA: 57.00-240.00.
MIXED HAY: 62.00-260.00.
TIMOTHY: 95.00-167.00.
CLOVER: 95.00-105.00
ORCHARD GRASS: 100.00-145.00.
STRAW: 70.00-155.00.
EAR CORN: 94.00-107.00.
OATS: 1.80-2.50 BU.

This sale was formerly held at the New Holland Sales Stable. It is now held at Diffenbach's New Holland Auction Center Ltd. located at 100 W. Jackson St., New Holland, across from the prior sale location. Auction time is 10:00 a.m. Mondays.

Walter M. Dunlap and Sons offers all cattle feeders two marketing Days — Give us a call for advice and marketing conditions.

MONDAYS OR WEDNESDAYS

Consign With Us — For The Marketing Edge

We are buying feeder pigs

★ ★ ★ Direct off the farm ★ ★ ★

Give us a call whether you are buying or selling

Next Feeder Cattle Sale
Fri., May 4 - 11:00 A.M.

PIGS

STATE GRADED SALE
FRI., MAY 4
1:30 P.M.
WESTMINSTER
LIVESTOCK AUCTION
Westminster, MD

Now holding 2 sales
each month on 1st &
3rd Fridays.

Phone (301) 848-9820
or (301) 857-1179

In this issue

Four Sections

DAIRY

Dairy Focus A22
Dairy Expo Winners A30
York Co. DHIA D17

HOME AND YOUTH

Homestead Notes B 2
Home On The Range B 6
Cook's Question Corner B 8
Kid's Korner B10
4-H Happenings B18
Farm Women Societies B16

FEATURES

County Acquires Parks A28
Glenna Fisher B 2
Goat Association B 2
Teen Prefers Barn B14
York Dairy Princess B17
Solanco YF D24

COLUMNS

Now is the Time A10
Farm Management A38
Microwave Minutes B 4
On Being A Farm Wife B 5
Taking Time B11
Have You Heard B12
Ida's Notebook B13
Pork Prose D 2
Poultry Pointers D 2
Swine Management D11
Horse Sense D15
Livestock Notes D21

DEPARTMENTS

Editorial A10
Farm Calendar A10
Farm Forum A10
Classified Ads B21, C 6
Business News D 6
Mailbox Markets D21
Sale Reports D28
Public Auction Register D33