

Frederick Livestock Auction

Frederick, Md.
 Monday, April 23, 1990
 Report Supplied by Auction
 SLAUGHTER COWS: 1.00 HIGHER!
 UTILITY 50.00-55.50; HIGH DRESSING
 TO 58.00; CANNER 48.00-53.00; SHEL-
 LY 48.00 DOWN.
 BULLS: YG#1 TO 67.75; YG#2
 57.00-60.25.
 FED STEERS: NONE.
 FED HEIFERS NO CHOICE
 OFFERED; SELECT 1050 LBS.
 65.00-68.00.
 VEAL CALVES: CHOICE, NONE
 OFFERED; STANDARD 130-250 LBS
 75.00-90.00, CULLS 85-120 LBS
 75.00-87.00, 50-80 LBS. 65.00-80.00;
 WEAK, ROUGH, THIN 60.00 DOWN
 FARM CALVES: GOOD DEMAND!
 HOLSTEIN BULLS #1 90-125 LBS.
 150.00-188.00; #2 80-110 LBS
 110.00-150.00.
 HOLSTEIN HEIFERS: 90-120 LBS.
 125.00-185.00; BEEF X BULLS AND
 HEIFERS TO 160.00
 BUTCHER HOGS 65 HEAD, 1.00
 HIGHER! US#1 AND 3 220-260 LBS.
 54.25-55.50; 260-280 LBS. 49.25-52.50.
 SOWS: 400-500 LBS. 45.00-49.00;
 500-700 LBS. 48.00-53.00.
 BOARS: TO 45.00
 STOCK CATTLE: HIGHER PRICES!
 STEERS, FEW OFFERED. NO LIGHT-
 WEIGHTS; 500-800 LBS 75.00-80.00
 HEIFERS 300-500 LBS. 72.00-86.00,
 MEDIUM 60.00-66.00; 500-700 LBS.

72.00-82.00; FEW HOLSTEINS 600-800
 LBS. 56.00-63.50.
 BULLS: NO LIGHTWEIGHTS;
 500-700 LBS. 75.00-89.00; 700-900 LBS.
 56.00-66.00; DAIRY REPLACEMENTS,
 JERSEY SPRINGER 485.00.
 SHEEP: 23.00-28.00.
 GOATS: MEDIUM TO 34.00.
 PIGS AND SHOATS: 55 HEAD. BY
 THE HEAD, 20-30 LBS. 22.00-26.00;
 35-50 LBS. 35.00-46.00; 70 LBS. TO
 61.00; BY THE POUND, FEW 97 LBS.
 TO 59.00.
 BOARS: 150-210 LBS. 44.00-46.50.
 NEXT MONDAY STRONG DEMAND
 FOR HOLSTEIN HEIFER CALVES
 FROM TENNESSEE BUYERS.

Friend's Stockyard, Inc.

Accident, Md. 21520
 April 23, 1990
 STOCK BULLS & STEERS (200 TO
 400 LBS.) 75.00-104.00.
 STOCK HEIFERS: 65.00-93.00.
 SLAUGHTER STEERS: GOOD TO
 CHOICE 74.00-76.50; MEDIUM TO
 GOOD 67.00-73.75.
 HOLSTEIN STEERS: HEAVY
 60.00-65.50; LIGHT 57.00-63.50.
 SLAUGHTER HEIFERS: GOOD TO
 CHOICE 72.00-74.50; MEDIUM TO
 GOOD 64.00-73.00.
 BULLS: HEAVY 60.00-70.50; LIGHT
 60.00-64.50.
 COWS: FEW HIGH DRESSING
 56.00-58.50; UTILITY HOLSTEIN
 50.00-55.50; CANNERS 44.00-52.75;
 COMMERCIAL TO GOOD 47.00-51.50;

CULL COWS 44.00 & DOWN.
 VEALS: GOOD TO CHOICE
 95.00-118.00, MEDIUM TO GOOD
 75.00-90.00.
 BOB CALVES: 50.00-85.00.
 HOLSTEIN BULL CALVES:
 RETURN TO FARM 100-120 LB.
 170.00-195.00.
 HOLSTEIN HEIFER CALVES:
 RETURN TO FARM 100-120 LB.
 90.00-160.00.
 HOGS: TOP QUALITY 54.50-56.20;
 HEAVY 54.00-55.50; LIGHT
 45.00-50.00.
 SOWS: 43.00-50.00.
 MALE HOGS: 37.00-42.25.
 LAMBS: 62.00-76.00; FEEDER
 LAMBS: 60.00-73.00.
 SHEEP: 12.00-24.50.
 EGGS: (PER DOZEN) LARGE .50-.60;
 MEDIUM .43; SMALL, NONE
 AVAILABLE.

Westminster Livestock Auction

Hagerstown, Md.
 Tuesday, April 24, 1990
 Report supplied by auction
 COWS: UTILITY 52.00-56.00; HIGH
 DRESSING 57.00-60.00; CANNERS
 49.00-54.00; SHELLY 48.00 DOWN.
 BULLS: YG#1 1700 LBS. 65.00-72.00;
 YG#2 57.00-64.50.
 FED STEERS: CHOICE 1100-1400
 LBS. 75.00-78.00; SELECT 67.00-74.00;
 SELECT HOLSTEINS UP TO 64.50;
 STANDARD 56.00-62.00.
 FED HEIFERS: CHOICE 1050-1350
 LBS. 70.00-75.00; 850-1000 LBS.
 65.00-70.00; SELECT 66.00-70.00.
 VEAL CALVES: CHOICE 200-325
 LBS. UP TO 112.00; GOOD 85.00-98.00;
 CULLS 85-120 LBS. 79.00-89.00; 50-80
 LBS. 68.00-78.00; WEAK AND ROUGH
 65.00 DOWN.
 FARM CALVES, HOLSTEIN BULLS:

#1 90-125 LBS. 150.00-190.00; #2 85-110
 LBS. 100.00-150.00; HOLSTEIN HEIF-
 ERS 85-95 LBS. 115.00-157.00.
 BEEF X BULLS: UP TO 152.00; HEIF-
 ERS UP TO 120.00.
 BUTCHER HOGS: #1 AND 2 240 LBS.
 UP TO 57.50; #1 AND 3 215-260 LBS.
 55.50-56.50; 260-300 LBS. 45.00-49.00;
 190-210 LBS. 50.00-53.50.
 SOWS: 300-700 LBS. 45.00-54.50.
 BOARS: 45.00-46.50.
 STOCK CATTLE, STEERS: 200-400
 LBS. 90.00-117.00, 400-600 LBS.
 77.00-92.00; 600-800 LBS. 72.00-86.00;
 800-1000 LBS. UP TO 73.00.
 HOLSTEINS: 400-600 LBS.
 70.00-80.00.
 HEIFERS: 300-500 LBS. 80.00-96.00;
 MEDIUM 70.00-80.00; 500-700 LBS.
 65.00-77.00; 700-900 LBS. 60.00-71.00.
 HOLSTEINS: 300-500 LBS.
 64.00-82.00.
 BULLS: 200-400 LBS. 77.00-93.00;
 400-600 LBS. 69.00-85.00; 600-800 LBS.
 63.00-75.00.
 HOLSTEINS: 400-700 LBS.
 60.00-67.00.
 LAMBS: CHOICE 100-120 LBS.
 68.00-70.00; 60-100 LBS. 68.00-75.00;
 40-60 LBS. 75.00-90.00; GOOD 80-110
 LBS. 53.00-60.00.
 SHEEP: 25.00-36.00.
 GOATS: LARGE 65.00-87.00;
 MEDIUM 35.00-61.00; KIDS
 28.00-40.00; SMALL 20.00-30.00.
 PIGS AND SHOATS, BY THE HEAD,
 20-30 LBS. 30.00-36.00; 30-50 LBS.
 34.00-45.00; 50-75 LBS. 47.00-63.00; BY
 THE POUND, 60-85 LBS. 64.00-70.00.

St. Louis Cattle, Hogs

Thursday, April 19, 1990
 OPENING MID-SESSION WEEKLY
 CLOSE CATTLE AND CALVES: 650 (25
 SLTR, 625 FDRS).

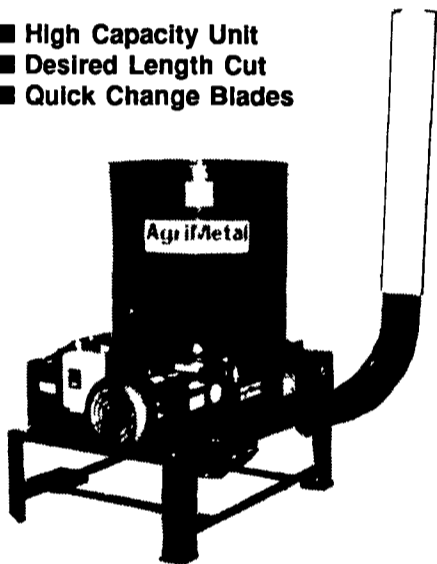
SUPPLY CONSISTS OF FEEDER
 CATTLE AND COWS FOR REGULAR
 THURSDAY AUCTION.
 SLAUGHTER MARKET NOT
 TESTED.

Peoria Cattle

Peoria, Illinois
 Thursday, April 19, 1990
 FEDERAL-STATE WEEKLY
 CATTLE SUMMARY TRADING
 SLOW. COMPARED WITH LAST
 MONDAY SLAUGHTER STEERS AND
 HEIFERS STEADY TO .50 HIGHER,
 INSTANCES 1.00 HIGHER; MOST
 ADVANCE ON CHOICE. AT THE AUCTION
 COWS 1.00 TO 2.00 HIGHER.
 BULLS MOSTLY STEADY. NOT
 ENOUGH FEEDER CATTLE FOR A
 MARKET TEST. SUPPLY MAINLY
 SELECT TO AVERAGE CHOICE
 SLAUGHTER STEERS AND HEIFERS
 WITH ABOUT 10% COWS. RECEIPTS
 THIS WEEK ABOUT 850 AS COM-
 PARED WITH 847 A WEEK AGO AND
 1368 A YEAR AGO.
 SLAUGHTER STEERS: CHOICE 2-4
 1050-1350 LBS. MOSTLY 77.50-79.50,
 LOAD 1239 LBS. 80.00 LOAD CHOICE,
 FEW PRIME 3 1223 LBS. 80.50 SELECT
 & CHOICE 2-3 1000-1300 LBS.
 75.50-77.50 SELECT 2-3 900-1200 LBS.
 70.00-76.00.
 SLAUGHTER HEIFERS: CHOICE 2-4
 950-1150 LBS. 77.00-79.00 SELECT &
 CHOICE 2-3 900-1100 LBS. 74.50-76.50
 SELECT 2-3 800-1000 LBS. 69.00-74.
 50.
 COWS: BREAKING UTILITY AND
 COMMERCIAL 2-4 48.50-56.50 CUT-
 TER & BONING UTILITY 1-2
 49.00-57.50 HIGH DRESSING
 57.75-59.75 CANNER AND LOW CUT-
 TER 1-2 43.00-48.50.
 BULLS: YG 1-2 1300-2050 LBS.
 62.75-71.50.

U S AGRI-SYSTEMS HAY CHOPPER WITH BLOWER FOR TOTAL MIXED RATIIONS

- High Capacity Unit
- Desired Length Cut
- Quick Change Blades



YOUR TOTAL MIXED RATION IS NOT COMPLETE WITHOUT HAY
 Call Today To Discuss Your Needs!

U S AGRI-SYSTEMS
 1-800-222-2948 301-398-2948 (Local)
 We Deliver Anywhere - Dealerships Available

Bob Wiker of Ronks, PA says his AgTec "retired" his Brand X Sprayer

"The other sprayer would not penetrate sweet corn and I had to save the crop. I talked to a neighbor about my problem and he said the AgTec was the only sprayer to use in sweet corn. So I bought the AgTec and it gave me what I needed in the field - penetration. I got the coverage I needed and I had clean corn."
 "Then I tried it on my other crops - tomatoes, cabbage, cauliflower, broccoli and brussel sprouts. Now I spray all 77 acres with Ag-Tec."
 "I can't afford to use the other sprayer on my vegetables. The AgTec cuts the cost of chemical application and saves me time in the field which I can use elsewhere. That's a deal I'll take anytime!"



SPECIAL SALE

Agtec Model 3004 Reconditioned Sprayer, Excellent Condition
 CASH - No Trade Price **\$3,900**

Lancaster County's Only Dealer
 Specializing In Sprayer Sales & Service

LESTER A. SINGER

96 N. Ronks Rd. Ronks, PA 17572
 1-800-456-5250 (717) 687-6712

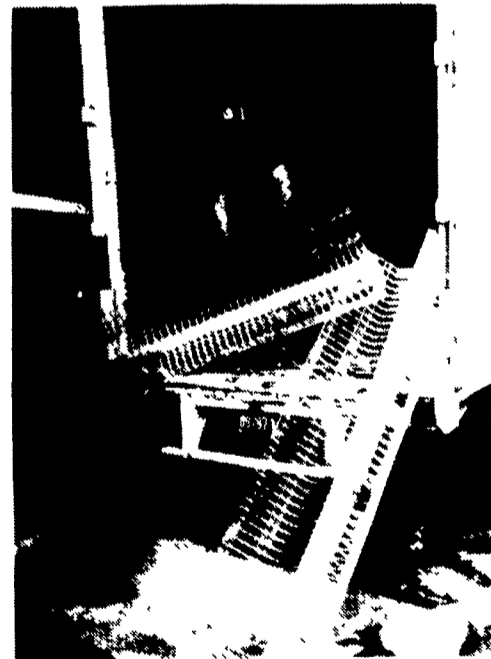
Mon.-Fri. 8 to 5; Sat. 8 to 12

OVERWHELMING DEMAND



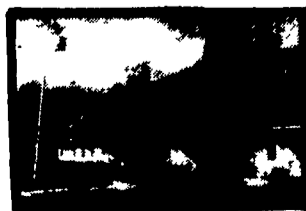
DUE TO OVERWHELMING DEMAND, BIG DUTCHMAN TRUCKS ARE BUSY MAKING DELIVERIES OF EQUIPMENT. DRIVER, RAY MOYER, ARRIVES IN PENNSYLVANIA WITH ANOTHER LOAD.

WAYNE HERSHEY AND JIM TEMPLIN FROM HERSHEY EQUIPMENT UNLOAD CAGE WIRE AT THE KEN BLEACHER FARM IN MILLERSVILLE, PA



Big Dutchman.

Big Dutchman offers the important features that make a cage system work better and last longer.



H HERSHEY EQUIPMENT COMPANY, INC.

Designers of Quality Systems for Poultry, Swine and Grain Handling

SYCAMORE IND. PARK
 255 PLANE TREE DRIVE
 LANCASTER, PA 17603
 (717) 393-5807

Route 30 West
 at the Centerville Exit.