

Virginia Weekly

April 19, 1990

MARKETS IN REVIEW; APRIL 12-18, 1990. FEEDER STEERS AND HEIFERS IN VIRGINIA HAD STEERS MIXED, \$3.50 LOWER TO \$6.50 HIGHER. HEIFERS WERE \$2.00-2.50 HIGHER.

SLAUGHTER STEERS AND HEIFERS IN VIRGINIA WERE 50 CENT TO \$4.50 HIGHER FOLLOWING MIDWEST MARKETS WHICH WERE 50 CENT TO \$1.00 HIGHER.

COWS AND BULLS IN VIRGINIA WERE MOSTLY \$1.00-2.00 HIGHER AS MIDWEST MARKETS WERE STEADY TO \$1.00 HIGHER. BEEF PRODUCTION WAS LESS THAN 1% ABOVE A WEEK AGO BUT 7% BELOW A YEAR AGO. AVERAGE DRESSED WEIGHTS WERE 11 POUNDS HEAVIER THAN A YEAR AGO.

VEAL AND CALF PRICES IN VIRGINIA WERE MOSTLY STEADY FOLLOWING MIDWEST PRICES WHICH

WERE ALSO STEADY. VEAL AND CALF PRODUCTION WAS LESS THAN 1% ABOVE A WEEK AGO BUT 8% BELOW A YEAR AGO. AVERAGE DRESSED WEIGHTS WERE 5 POUNDS LIGHTER THAN A YEAR AGO.

LAMB PRICES IN VIRGINIA WERE \$2.00-3.00 LOWER FOLLOWING MIDWEST PRICES WHICH WERE \$1.00-4.75 LOWER. LAMB PRODUCTION WAS 17% BELOW A WEEK AGO BUT 17% ABOVE A YEAR AGO. AVERAGE DRESSED WEIGHTS WERE THE SAME AS LAST YEAR.

SLAUGHTER HOG PRICES IN VIRGINIA WERE 25 CENT HIGHER AS MIDWEST PRICES WERE 50 CENT HIGHER. FRESH PORK PRICES WERE MOSTLY \$2.00-5.00 HIGHER. HOG PRODUCTION WAS 2% LOWER THAN A WEEK AGO AND 9% BELOW A YEAR AGO. AVERAGE DRESSED WEIGHTS WERE 2 POUNDS LIGHTER THAN A YEAR AGO.

THE VIRGINIA DIRECT HOG MARKET APRIL 12-18, 1990,

RECEIPTS FOR THE DIRECT HOG MARKET IN VIRGINIA FOR THE PERIOD TOTALLED 48,330 HEAD COMPARED TO LAST WEEK 46,820 HEAD. THE SOUTHEAST VIRGINIA HOG MARKET CLOSED 25 CENT HIGHER COMPARED TO LAST WEDNESDAY'S TRADING WITH BARROWS AND GILTS; COUNTRY POINTS LOCAL PLANT DELIVERED (30 MILE RADIUS) US 1-3 210-250 LBS 52.25-52.75 52.75-53.25 FEW 52.25 & 53.75 US 1-2 200-210 LBS 50.75-51.25 US 1-3 250-260 LBS 50.75-51.25 US 2-3 260-270 LBS 48.75-49.25 US 2-4 270-300 LBS 44.75-47.25 SOWS \$38.00-54.40 AND BOARS \$28.00-38.75 VALLEY AND NORTHERN VIRGINIA HOGS; 1131 HEAD FOR THE PERIOD. US 1-3 210-250 LBS \$53.00-53.75.

SLAUGHTER STEERS AND HEIFERS 6%; SLAUGHTER COWS 13% SLAUGHTER BULLS 2%; SLAUGHTER CALVES AND VEALERS 0%; FEEDER CATTLE UNDER 600 LBS 63% OVER 600 LBS 16%

PRICE RANGES FOR VIRGINIA WEEKLY AUCTIONS

SLAUGHTER CATTLE STEERS: CHOICE 2-3 1100 LBS & UNDER 73.00-75.75 CHOICE 2-3 1100-1300 LBS 72.75-78.50 CHOICE 2-3 1300 LBS & OVER 72.00-77.25 HEIFERS; CHOICE 2-3 950 LB & UNDER 65.50-71.50 CHOICE 2-3 950-1100 LBS 67.00-74.25 CHOICE 2-3 1100 LBS & OVER 65.50-75.75 MOSTLY 67.00-75.25 UTILITY & COMMERCIAL COWS 46.00-58.25 BULLS - 1-2 900-1300 LBS 55.00-65.50 FEW 72.00 1-2 1300-1600 LBS 57.25-69.00 1-2 1600 LBS & OVER 59.25-72.00 SLAUGHTER CALVES AND VEALERS VEALERS - HIGH

CHOICE & PRIME 100-250 LBS 95.00-99.00 GOOD AND CHOICE 100-250 LBS --- CALVES -GOOD AND CHOICE 250-500 LBS 73.50-77.00 1 AT 87.00 SLAUGHTER LAMBS HIGH CHOICE & PRIME 95-125 LBS SPRING 61.50-66.00 HIGH CHOICE & PRIME 95-125 LBS WOOL 55.00-64.00 SLAUGHTER HOGS US 1-3 200-250 LBS 48.75-52.50 SOWS US 1-3 300-500 LBS 37.00-47.80 500 LBS & OVER 48.00-52.75

FEEDER CATTLE STEERS; MEDIUM 1 HEIFERS; MEDIUM 1 200-300 LBS 106.00-118.00 FEW 95.00 300-400 LBS 88.00-102.00 300-400 94.00-109.00 FEW 117.00 400-500 79.00-94.00 *400-500 95.50-110.00 500-600 79.00-90.00 FEW 74.00 500-600 90.00-108.50 600-700 71.00-83.50 600-700 85.00-99.50 700-800 66.00-71.75 700-800 72.50-86.00 800-900 65.00-68.00 800-900 65.75-79.50.

STEADY TO \$2.00 HIGHER.

SLAUGHTER COWS 72 HEAD CUTTER & BNG.UT. 1-3 47.50-56.00 BRKG.UT. & COMM. 2-4 49.50-56.50 CANNER & LOW CUTTER 1-2 43.00-46.00

SLAUGHTER BULLS 7 HEAD - 1-2 900-1300 LBS 60.50-65.50 1-2 1300-1600 LBS 64.00 1-2 1600 LBS & OVER 64.50-68.50

FEEDER CATTLE 324 HEAD - FEEDER STEERS \$3.00-5.00 HIGHER. FEEDER HEIFERS STEADY TO \$3.00 HIGHER. STEERS; MEDIUM 1 SMALL 1 MED.&LARGE 2 300-400 98.00-109.00 --- 400-500 95.50-102.50 84.00-89.00 86.00-90.00 500-600 88.00-96.50 75.00-85.50 85.00-88.00 600-700 86.00-93.00 --- 700-800 77.00 --- 800-900 72.00 --- HOLSTEIN STEERS; MED.&LARGE 1-2 300-500 LBS 80.50-87.00

HEIFERS; MEDIUM 1 MED.&LARGE 2 300-400 85.00-96.00 80.50-84.00 400-500 79.00-87.00 77.00-83.00 500-600 75.00-81.00 69.50-72.00 600-700 74.50-77.50 --- 700-800 70.00-71.75 --- FEEDER BULLS; MED. 1 SMALL 1 200-300 LBS 105.00-107.00 --- 300-400 LBS 98.00 83.00-86.50 400-500 LBS 86.50-92.50 80.00-84.00 500-600 LBS 82.00-84.50 --- COWS WITH CALVES AT SIDE 6 PAIR; M-1, 3-10 YR LD 800-1000 LBS WITH CALES 55-100 LBS 625.00-725.00 PER PAIR. BABY CALVES RETURNED TO FARMS 11 HEAD NEWBORN TO 4 WK OLD 55.00-97.50 PER HEAD. OVER 100 LBS 95.00-152.50 PER CWT.

N. Virginia Area

Livestock

Orange, VA

April 18, 1990

ALL TRENDS COMPARED TO LAST WEDNESDAY

SLAUGHTER CATTLE 79 HEAD - SLAUGHTER COWS STEADY TO \$1.00 HIGHER. SLAUGHTER BULLS

SAVE - FULL LINE OF - SAVE

FERTILIZER

10-20-20

10-20-10

8-24-8

TWINES

\$19⁵⁰

SPRAY MATERIAL

Atrazine Bullet
Banvel Counter
Blcpe Dual
Bladex

Plus Many More

OATS

Ogle Hercules
Porter

NORTH COAST CORN

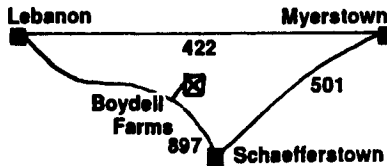
NC 2520 NC 2500
NC 2402A NC 2390

SOYBEANS

NC Wave NC Shore
Resnick & Agri 8836
Pella

New Distributors For STINE Soybeans - Longest Private Packer in U.S.

3090E 4190
3790 5970



BOYDELL FARMS

302 Iona Rd., Lebanon, PA 17042

Phone: 717-272-8943

ATTENTION - CATTLE FEEDERS

SPECIAL GRADED FEEDER SALE

Friday, April 27, 1990

80 Head Out Of New York State Weighing 450 to 600 Lbs. - Mostly Angus Cattle
125 Head From Bucks County, PA, Weighing 600 to 750 lbs. - All Angus Cattle
60 Head From The Eastern Shore Of Maryland Weighing 900 Lbs.
Plus - 200 Other Local Cattle

Walter M. Dunlap and Sons

Lancaster Stockyards Tel. (717) 397-5136

An Old Line Commission Firm Keeping Abreast With The Times



Rev Up Her Production With...

BY PASS 100 PLUS

BY PASS 100 PLUS is a combination of Bypass Protein and MEGALAC® locked into a palatable pellet.

Available Only From:

MEGALAC® is a registered trademark of Volac Limited and licensed to Church & Dwight Co., Inc.



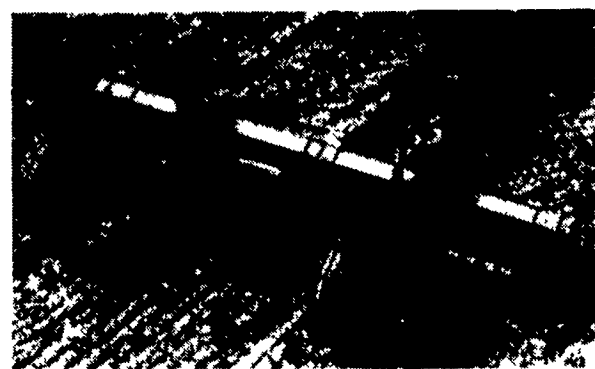
PA TOLL FREE

1-800-468-5524

Local (717) 367-1525

419 West High St, Elizabethtown, PA 17022

Pack a perfect seedbed



Pull it behind your primary tillage tool for the perfect seedbed in one pass. Use it to break clods and crust. Or pull it behind the drill. The Dunham Lehr 40 CultiPacker from Farmhand. It helps you get your crops off to a good start.

Built tough to do the job longer, with less trouble. Available in sizes from 4' to 16'.

(Wholesale Distributors)

FOR OVER 75 YEARS

FARM EQUIPMENT

DIVISION

HAGERSTOWN, MD

(301) 791-0422



TODD FARM EQUIPMENT, Inc.

CHECK IT OUT TODAY!