

FARM EQUIPMENT



NI 21-A ground drive
\$700
301-898-7426



All Oak Bale Wagons While Supplies Last

- 18 ft. Hay Rack Painted **\$625.00**
- No Paint **\$585.00**
- 16 ft. Hay Rack Painted **\$525.00**
- No Paint **\$490.00**
- 8 Ton Gear, No Tires..... **\$450.00**
- 8 Ton Gear, 11L Tires & Tubes..... **\$625.00**
- Set of 4 11L Tires & Tubes..... **\$175.00**
- Extension Tong Extra..... **\$25.00**

Ivan Z. Hoover
1571 Diamond Station Rd.
Ephrata, PA
717-733-6825
7 AM to 7 PM
For Gears Only Call 717-354-0595

KUBOTA

Nothing like it on earth.

Full Service,
Parts And
Rental

TRACTORS

- Kubota B8200 HSD, Tractor, Loader, Backhoe
- Kubota M7950 DT, 4x4, 76 HP Diesel, Very Good Cond.
- Kubota B6100E, Gear w/K48 Mower Deck, 2 WD
- Kubota L245 Tractor, Loader, Backhoe
- Kubota L305, 2 WD
- Kubota L4150, 2WD
- Ford 1500, 2 WD, Ag w/702 Loader
- Ford 1710, 4x4 w/Blade
- IH 234, 2WD, Turf, Clean, 3 Cyl. Diesel
- Gravely 450, Commercial w/Mower and Snow Blade
- Gravely 620 Tractor w/60" Mower And Vac (2 yrs. old)
- Gravely 18H Promaster w/60" Deck (1 yr. old)
- Wheel Horse G1000
- John Deere M w/Plow
- JD 2240 Tractor w/146 Loader, Low Hours
- Case 210, 10 HP w/Mower
- Simplicity 6010 w/Blower and Mower
- Bolens 212, 3 cylinder diesel w/loader
- Grasshopper 1822 w/catcher & 18 HP Kubota Diesel Engine

MISCELLANEOUS EQUIP.

- Bush Hog BD90, 3 Blade, 3 Pt. Mower w/Roller Kit
- Echo SRM302 Trimmer
- Ford 3 Pt., 6 Ft. Disc
- John Deere 172 6 Ft. Belly Mt. Mower For 1050
- Kubota 5 Ft. Rear Mount
- Land Pride BB2554 Box Scraper w/Scarifier, 54 Inch
- Roof Leaf Vac, Walk Behind, 5 Hp.
- Troy Bilt Hi Wheel 21" Self Propelled Mower
- Wizzard High Wheel, 5 HP, 26" Cut Mower
- Woods Cadet 72, 6 Ft. Cutter w/Safety Chains

NICARRY EQUIPMENT CO.

RD #2, Box 2008, Reading, Pa. 19605
215-926-2441
Located: 4 Miles North of Reading On Rt. 61
3 Miles South of Leesport
Hours: Mon. thru Fri. 8 to 5; Sat. 8 to 3

USED EQUIPMENT



TRACTORS

- IH Cub w/Front Blade, 1 Bot. Plow & Center Mid. Mower
- Case 350 w/6-Way Blade
- Ford 8N Tractor

FORAGE

- NH No. 23 Blower
- NH 30 Blower
- NH 718 2-Row Forage Harvester
- Heaton 7020 w/2 Heads

GRINDER MIXERS

- IH 1250 Grinder Mixer
- NH 357

SPREADERS

- NH 518 w/Hydraulic Endgate
- NH 519 w/Hydraulic Endgate
- NI 214 Single Btr. Hyd. Endgate

HAY TOOLS

- NH 275 Baler w/Thrower
- IH 440 Baler w/No. 10 Thrower
- JD 10 Side Mtd. Mower
- Grimm Ground Drive Tedder

SPRAYERS

- Weish 3 Point

TRACTORS DISMANTLED FOR USED PARTS

- Oliver 550
- Oliver 77
- Oliver 1650
- Oliver 1955
- Oliver 1750

TILLAGE & PLANTING

- IH 455 4 row Planter
- IH 400 4 Row Planter
- Oliver Drag Type Harrow

LAWN & GARDEN

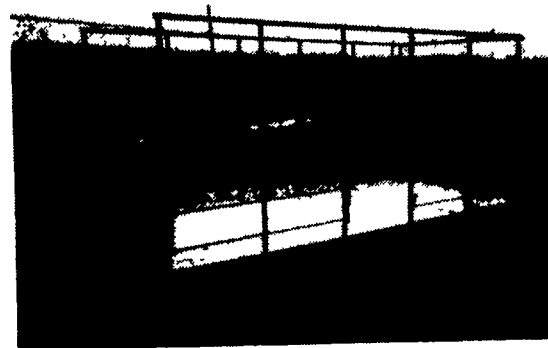
- Cub Cadet 102 w/38" Mower
- Ford LT11 Lawn Tractor
- Simplicity 4208 Lawn Tractor w/Mower
- Simplicity 4212 Lawn Tractor w/Mower

NORMAN D. CLARK & SON

Honey Grove, PA 17035
717-734-3682

Located 14 Miles South of Port Royal on Rt. 75

2nd Location — Loysville, PA — 717-789-3117
(Formerly Shover's)



A WAGON BUILT TO LAST - ASK OUR CUSTOMERS

- * All steel bed frame - schedule #40 pipe side racks
- * Sides easily removed - Side gates open under pressure
- * Treated lumber flooring - screwed down
- * Formed steel side rails - steel bumper
- * Rear gate swings 270° either way
- * Standard sizes: 8x16, 8x18, 8x20, 9x18, 9x20, 9x24
- * Also just side racks available

Diller Equipment

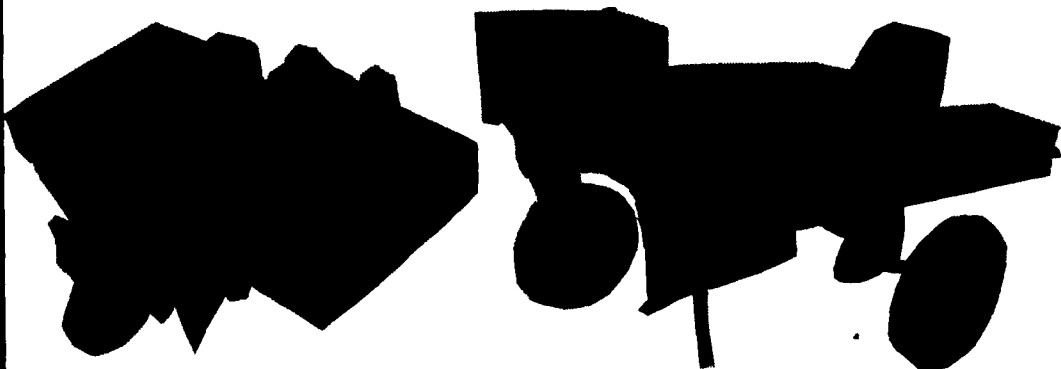
Call Anytime, Except Sunday

1-800-523-8002 Ask For Lynn

Chambersburg, PA

PH: 717-369-2691
RES. 717-369-3019

TREE PLANT DESIGN, INC.
"Transplanters"



We have designed a Transplanter that

- SAVES TIME!
- SAVES MONEY!
- SAVE LABOR

- Three Models to choose from
- Planting shoe width sizes vary from 3" to 24"
- Plant Trees from 3" seedlings up to 10' Shade Tree
- APPROXIMATE PLANTING TIME 1000 per HOUR!
- Extremely HEAVY DUTY
- Will stand up to your toughest requirements
- BREAKDOWN TIME - NONE!
- LEAVE YOUR TOOLS IN THE SHOP!!
- Rentals Available

TREE PLANT DESIGN, INC.

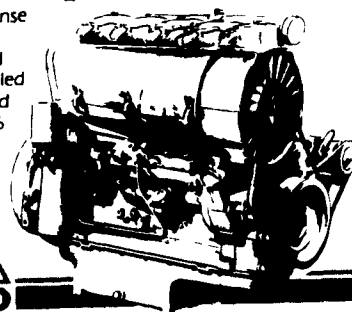
RD 1 Box 104
New Ringgold, PA 17960
717-386-3515



AIR DIESEL

It can eliminate
40% of all your engine maintenance problems.

A Deutz AirDiesel is a true no-nonsense engine. There are no troublesome components such as hoses, fans and radiators associated with liquid-cooled engines. A Deutz is cooled by air and is engineered to save you up to 20% in fuel over other diesels. Over one million AirDiesels from 5 to 500 HP are working in all fields of application throughout the world.



KHD DEUTZ

Deutz distributors since 1955

- ★ We are a one-stop, full-service Deutz engine supply house. Wholesale, Dealer & Retail Sales.
- ★ Largest parts stock in the Northeast.
- ★ Large stock of engines up to 270 Hp series. Delivery from stock.
- ★ We specialize in Industrial engines to serve you better.

Stuffer Diesel Inc.

46 Pleasant Valley Road
Ephrata, PA 17522
(717) 738-2500

48 Buttermilk Hollow Road
Irwin, PA 15642
(412) 864-6969